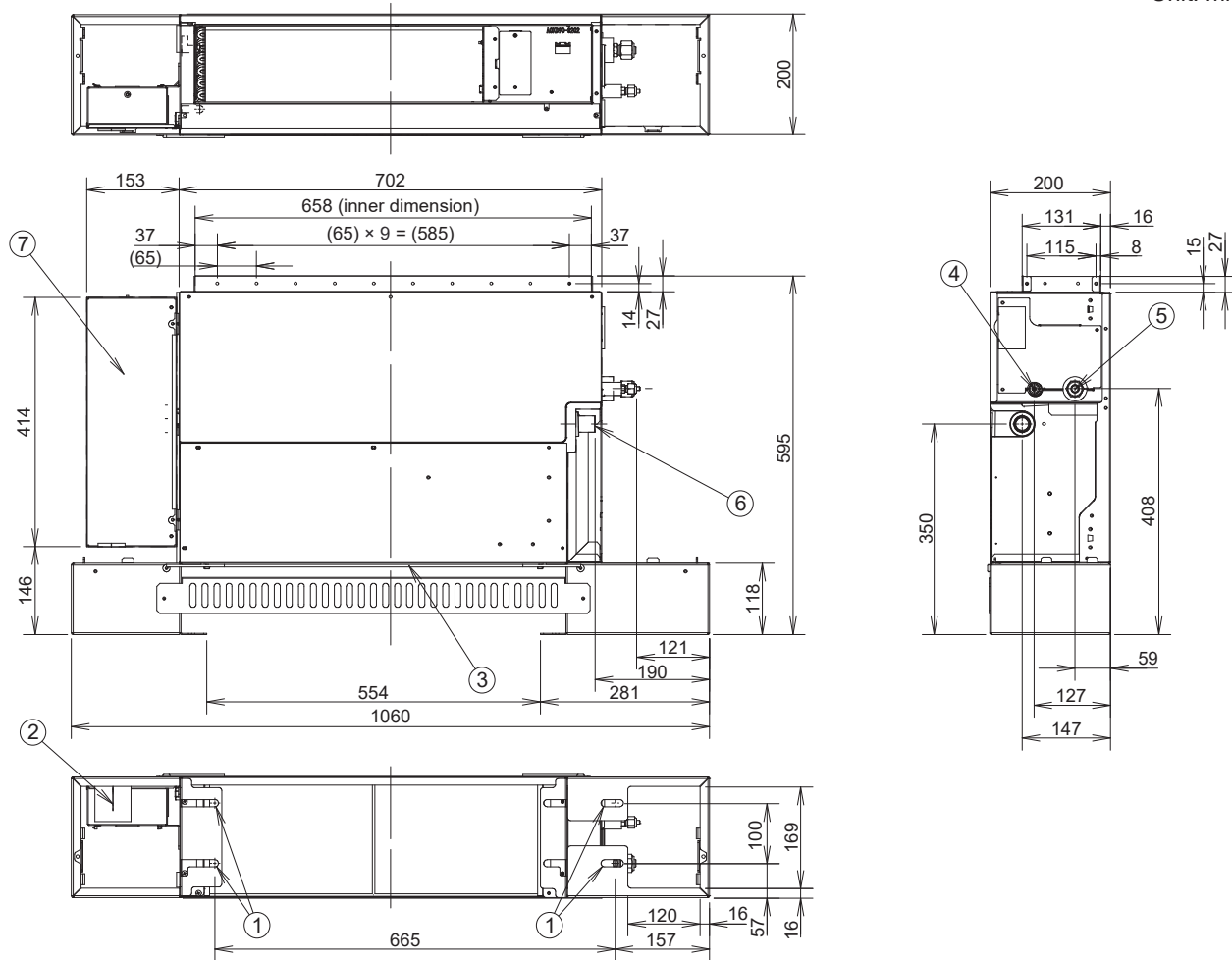


7. Concealed Floor Standing (Type R2)

7-3. Dimensional Data

Indoor unit : S-22MR2E, S-28MR2E, S-36MR2E

Unit: mm



①	Elongated holes (for floor mounting)
②	Power supply outlet
③	Air filter
④	Refrigerant tubing (liquid tube) $\phi 6.35$ (flared)
⑤	Refrigerant tubing (gas tube) $\phi 12.7$ (flared)
⑥	Drain tube connection port VP20
⑦	Electrical component box

Filter dimension: 557 × 196 × 5 (1 pc.)

Note

The minimum space for installation and maintenance services is shown in the figure.

