

DIAGRAM DISPLAY	SYMBOL	LEGEND DESCRIPTION
---	###	POWER WIRE
---	---	CONTROL WIRE
---	---	REF. PIPE / WATER PIPE
---	---	POWER SIGNAL WIRE

- The symbol of replace judgement
- #1 Standard
 - #2 Usable (but performance will be affected)
 - #3 Usable (replacement charge will be limited)
 - #4 Usable (piping length will be limited)
 - #5 Piping length and effect operation will be limited

WIRING LIST

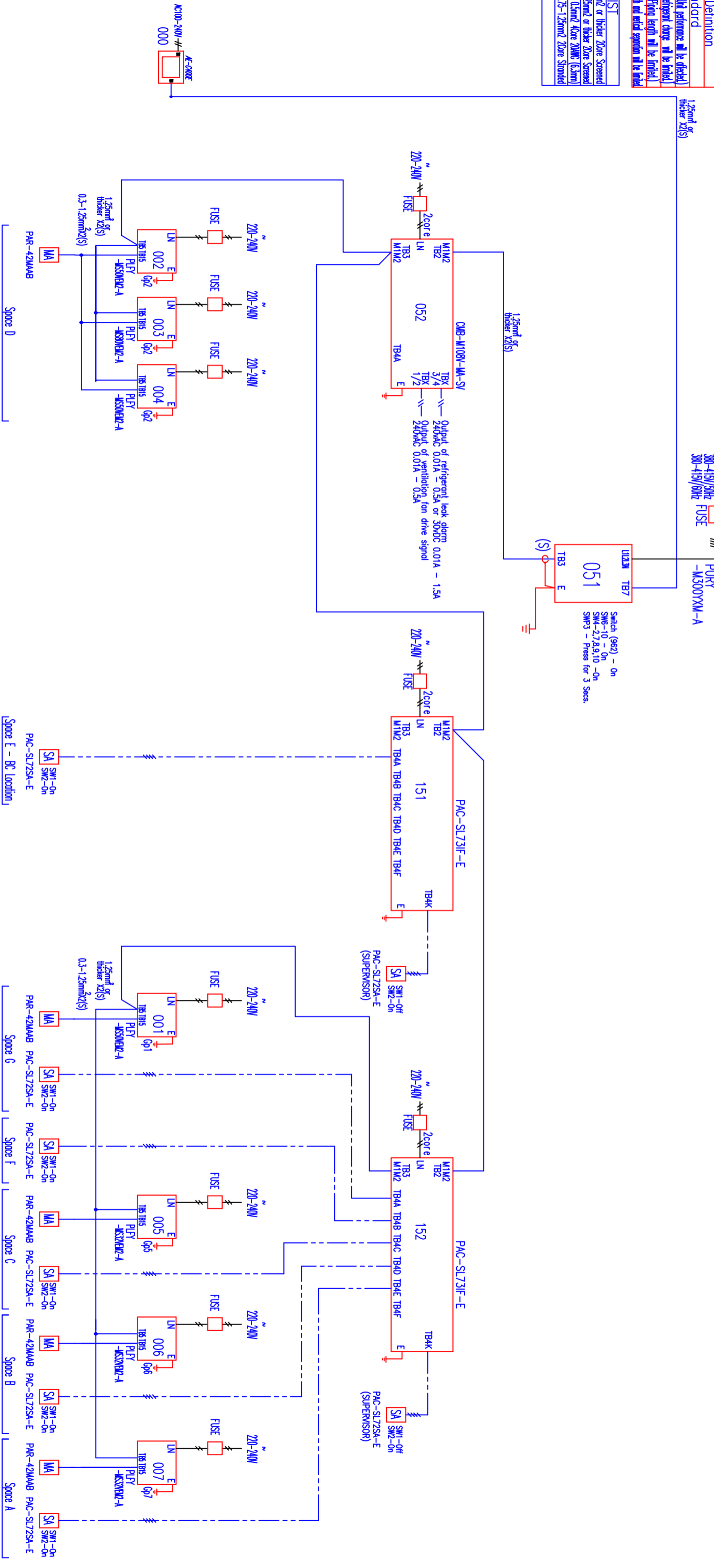
W-NT	- 1.25mm ² or thicker 2-core Screened
Controler	- 0.5-1.25mm ² or thicker 2-core Screened
Sensor & Alarm	- 0.5mm ² 4-core 20MR (0.5mm)
Phase Signal	- 0.75-1.25mm ² 2-core Stranded

CITY MULTI YXM SCENE 1 – OFFICE
SYSTEM SCHEMATIC DWG.
WIRING SCHEMATIC – EN378

System 1

Please Note: Remove jumper from CNSB of all indoor units

Appropriate Circuit Protection Device in accordance with local government regulations are mandatory required such as GfI(Residual type) and TB etc. Please refer the amount of pre-charge and the formula of calculation which is mentioned on the data book. 1.25mm² (16 AWG) or more. 1.25mm² (16 AWG) or more. 1.25mm² (16 AWG) or more. Warning: HNF pipe size is dependent on pipe length, please confirm before implementation.



REMARKS

Space D
Space E - BC Location
Space G
Space F
Space C
Space B
Space A

MITSUBISHI ELECTRIC
PMD – MARKET SUPPORT
REVISED ON 12/03/2026

CITY MULTI YXM SCENE 1 – OFFICE
 SYSTEM SCHEMATIC DWG.
 WIRING SCHEMATIC – PRODUCT STANDARD

Appropriate Circuit Protection Device in accordance with local government regulations are mandatory required such as GFI(rewirer type) and WB etc.
 Please refer the amount of pre-charge and the formula of calculation which is mentioned on the data book.
 1.25mm² (16 AWG) : 1.25mm² (16 AWG) or more. 1.25mm² (16 AWG) : 1.25mm² (16 AWG) or more.
 Warning: HRF pipe size is dependent on pipe length, please confirm before implementation.

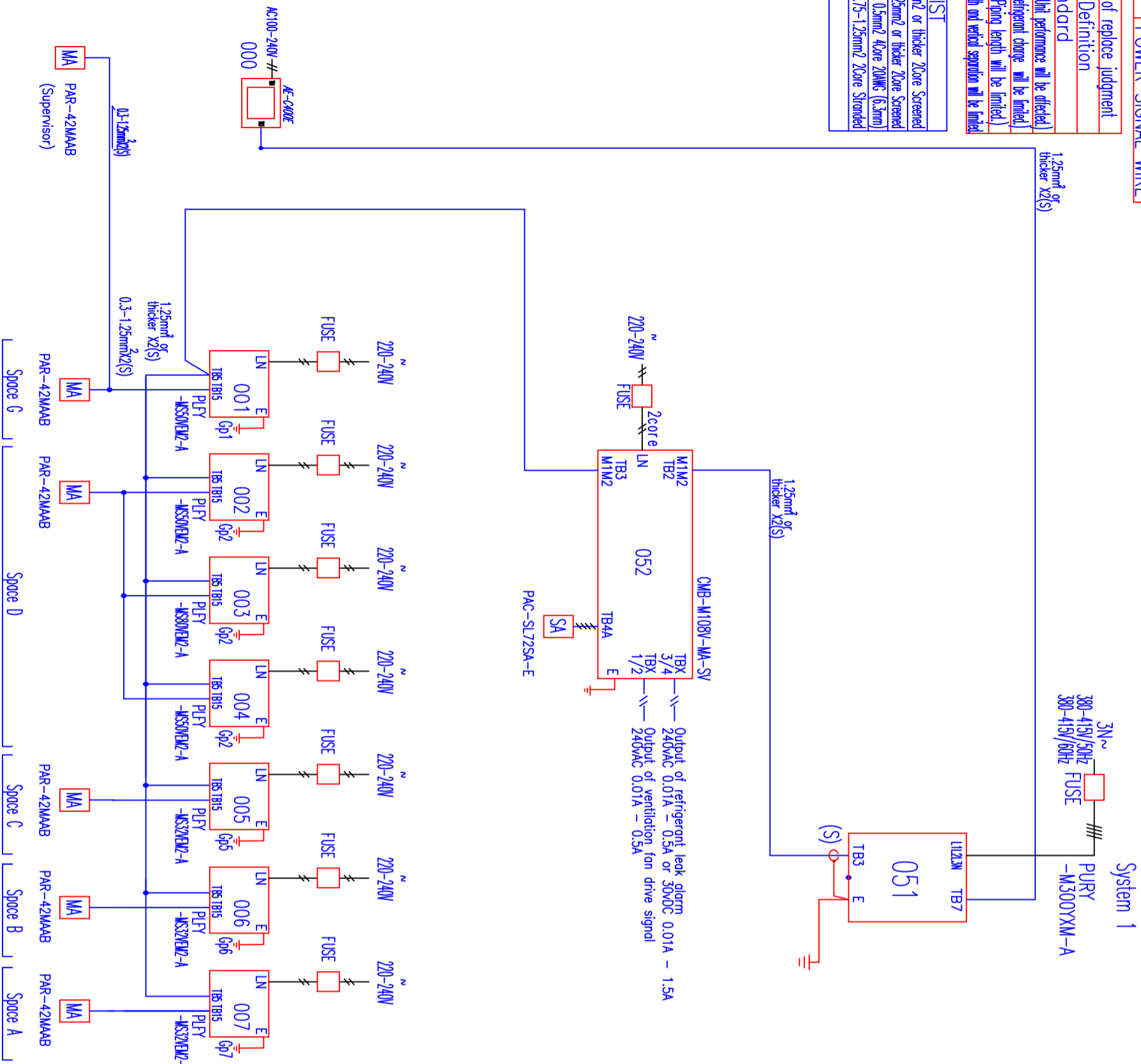
DIAGRAM DISPLAY	SYMBOL DESCRIPTION	LEGEND
—#—#—#	POWER WIRE	
— — — —	CONTROL WIRE	
--- ---	REF. PIPE / WATER PIPE	
—#—#	POWER SIGNAL WIRE	

The symbol of replace judgment

Symbol	Definition
#1	Standard
#2	Usable (Unit performance will be affected)
#3	Usable (Refrigerant charge will be limited)
#4	Usable (Piping length will be limited)
#5	Piping length and vertical separation will be limited

WIRING LIST

M-NET	- 1.25mm ² or thicker 2Core Screened
Controller	- 0.3-1.25mm ² or thicker 2Core Screened
Sensor & Alarm	- 0.5mm ² 4Core 20AWG (6.3mm)
Pulse Signal	- 0.75-1.25mm ² 2Core Stranded



REMARKS

MITSUBISHI ELECTRIC
 PMD – MARKET SUPPORT

REVISED ON 12/03/2026

DIAGRAM SYMBOL	LEGEND	DESCRIPTION
---	---	POWER WIRE
---	---	CONTROL WIRE
---	---	RET. PIPE / WATER WIRE
---	---	POWER SIGNAL WIRE

CITY MULTI YXM SCENE 3 – HOTEL
SYSTEM SCHEMATIC DWG.
WIRING SCHEMATIC – EN378

Please Note: Remove jumper from CN3 of all indoor units

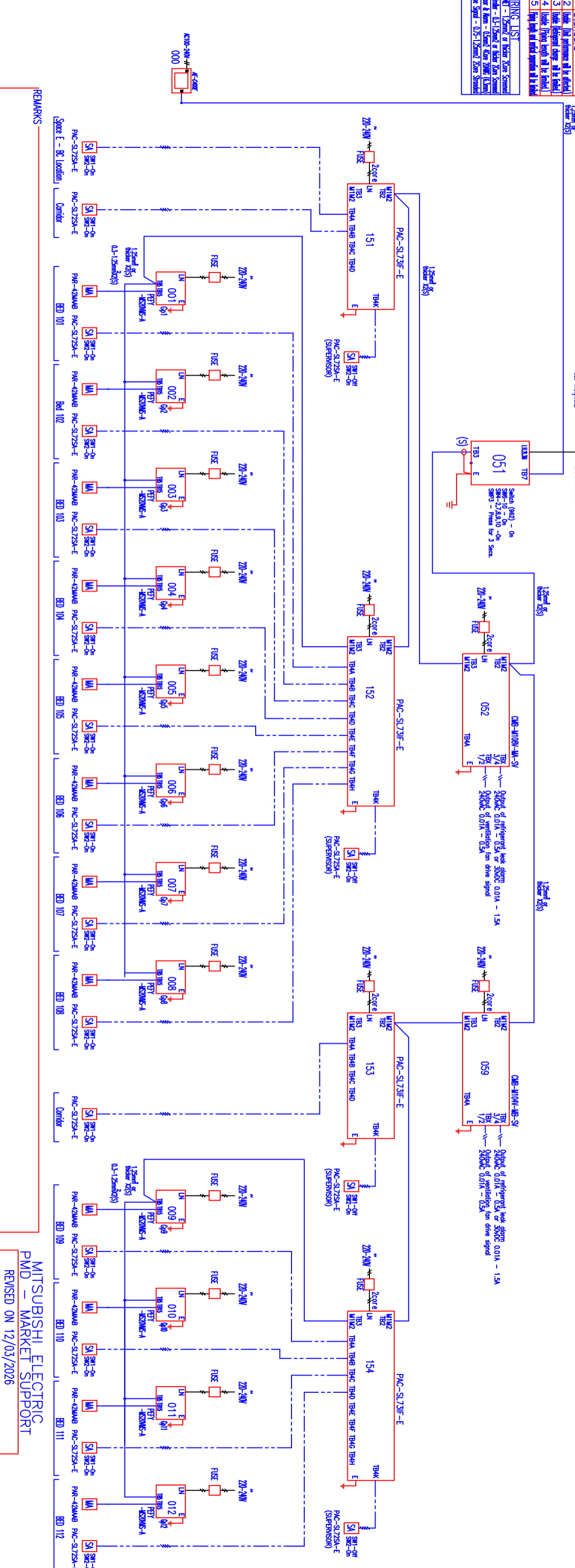
Appropriate local practices takes in accordance with local government regulations on mandatory required such as (Circuit type) and (B) etc. Please refer the amount of pre-charge and the formula of calculation which is mentioned on the data book.
1.25mm² (16 AWG) : 1.25mm² (16 AWG) or more, 1.25mm² (16 AWG) : 1.25mm² (16 AWG) or more.
Warning: HWF pipe size is dependent on pipe length, please confirm before implementation.

The symbol of ellipse judgment

Symbol	Definition
# 1	Standard
# 2	Under (Not performance will be checked)
# 3	Under (Performance check will be checked)
# 4	Under (Performance check will be checked)
# 5	Under (Performance check will be checked)

WIRING LIST

Item	Description
# 1	Standard
# 2	Under (Not performance will be checked)
# 3	Under (Performance check will be checked)
# 4	Under (Performance check will be checked)
# 5	Under (Performance check will be checked)



MITSUBISHI ELECTRIC
PMD – MARKET SUPPORT
REVISED ON 12/03/2026

REMARKS

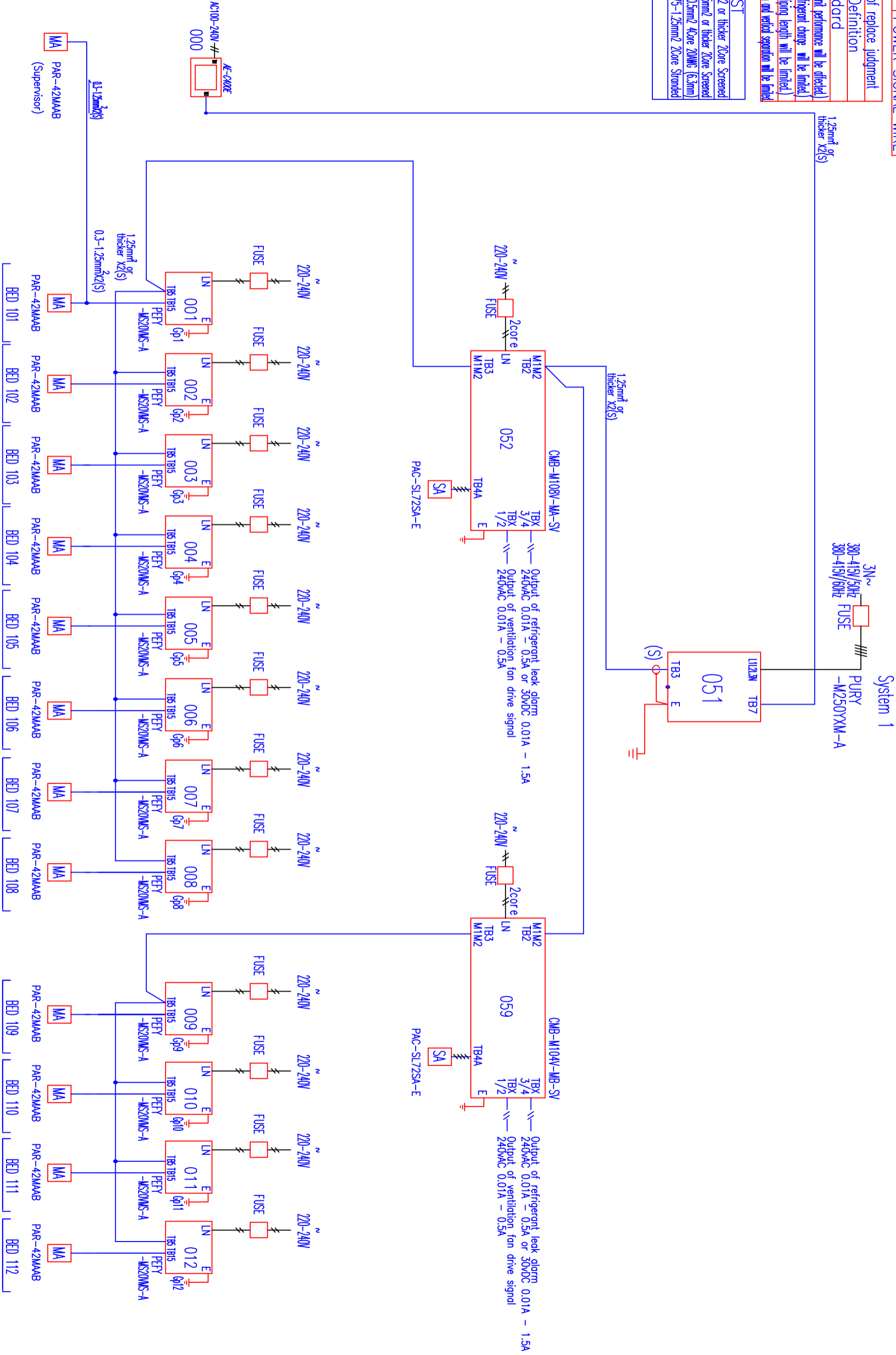
Appropriate Circuit Protection Device in accordance with local government regulations are mandatory required such as GFI(overter type) and MR etc.
 Please refer the amount of pre-charge and the formula of calculation which is mentioned on the data book.
 1.25mm² (16 AWG) : 1.25mm² (16 AWG) or more. 1.25mm² (16 AWG) : 1.25mm² (16 AWG) or more.
 Warning: HRF pipe size is dependent on pipe length, please confirm before implementation.

DIAGRAM SYMBOL	LEGEND DESCRIPTION
—#—#—#	POWER WIRE
---#---	CONTROL WIRE
- - - - -	REF. PIPE / WATER PIPE
—#—#—#	POWER SIGNAL WIRE

The symbol of replace judgment

Symbol	Definition
# 1	Standard
# 2	Isable (Unit performance will be affected)
# 3	Isable (Refrigerant charge will be limited)
# 4	Isable (Piping length will be limited)
# 5	Piping length and vertical separation will be limited

WIRING LIST	
M-NET	– 1.25mm ² or thicker 2Core Screened
Controller	– 0.3–1.25mm ² or thicker 2Core Screened
Sensor & Alarm	– 0.5mm ² 4Core 20AWG (6.3mm)
Pulse Signal	– 0.75–1.25mm ² 2Core Stranded



REMARKS

MITSUBISHI ELECTRIC
 PMD – MARKET SUPPORT
 REVISED ON 12/03/2026

Please Note: Remove jumper from CN55 of all indoor units

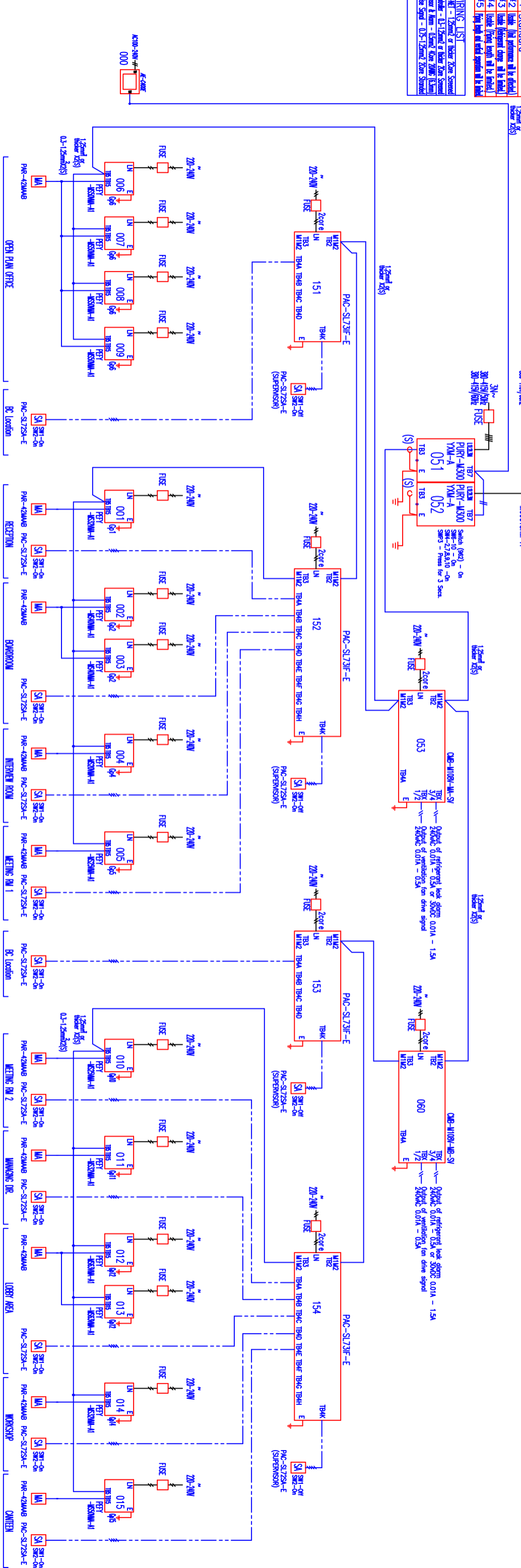
Appropriate Cross Sectional Area is accordance with local government regulations or mandatory required such as (EN14181 (p1)) and BS 6843.
 Please refer the amount of gas-charging and the formula of calculation which is mentioned on the data book.
 1.25mm² (16 AWG) : 1.25mm² (16 AWG) or more, 1.25mm² (16 AWG) : 1.25mm² (16 AWG) or more.
 Warning: RMR pipe size is dependent on pipe length, please confirm before implementation.

The symbol of replace judgment

Symbol	Definition
#1 Standard	
#2 Replace	(Red arrow) will be replaced
#3 Replace	(Blue arrow) will be replaced
#4 Replace	(Green arrow) will be replaced
#5	(Pink arrow) will be replaced

WIRING LIST

LINE NO.	DESCRIPTION	WIRE NO.	WIRE TYPE	WIRE SIZE	WIRE COLOR
000	AC100-240V	000	LN	2.0	Blue
000	AC100-240V	000	PE	2.0	Green/Yellow



REMARKS

OPEN PLAN OFFICE

RECEPTION

BROUCCON

INTERFER ROOM

MEETING RM 1

MEETING RM 2

WORKING DR.

LOBBY AREA

WORKSHOP

CANTIN

MITSUBISHI ELECTRIC
 PMD – MARKET SUPPORT
 REVISED ON 12/03/2026

DIAGRAM DISPLAY	SYMBOL	LEGEND DESCRIPTION
---	###	POWER WIRE
---	---	CONTROL WIRE
---	---	REF. PIPE / WATER PIPE
---	---	POWER SIGNAL WIRE

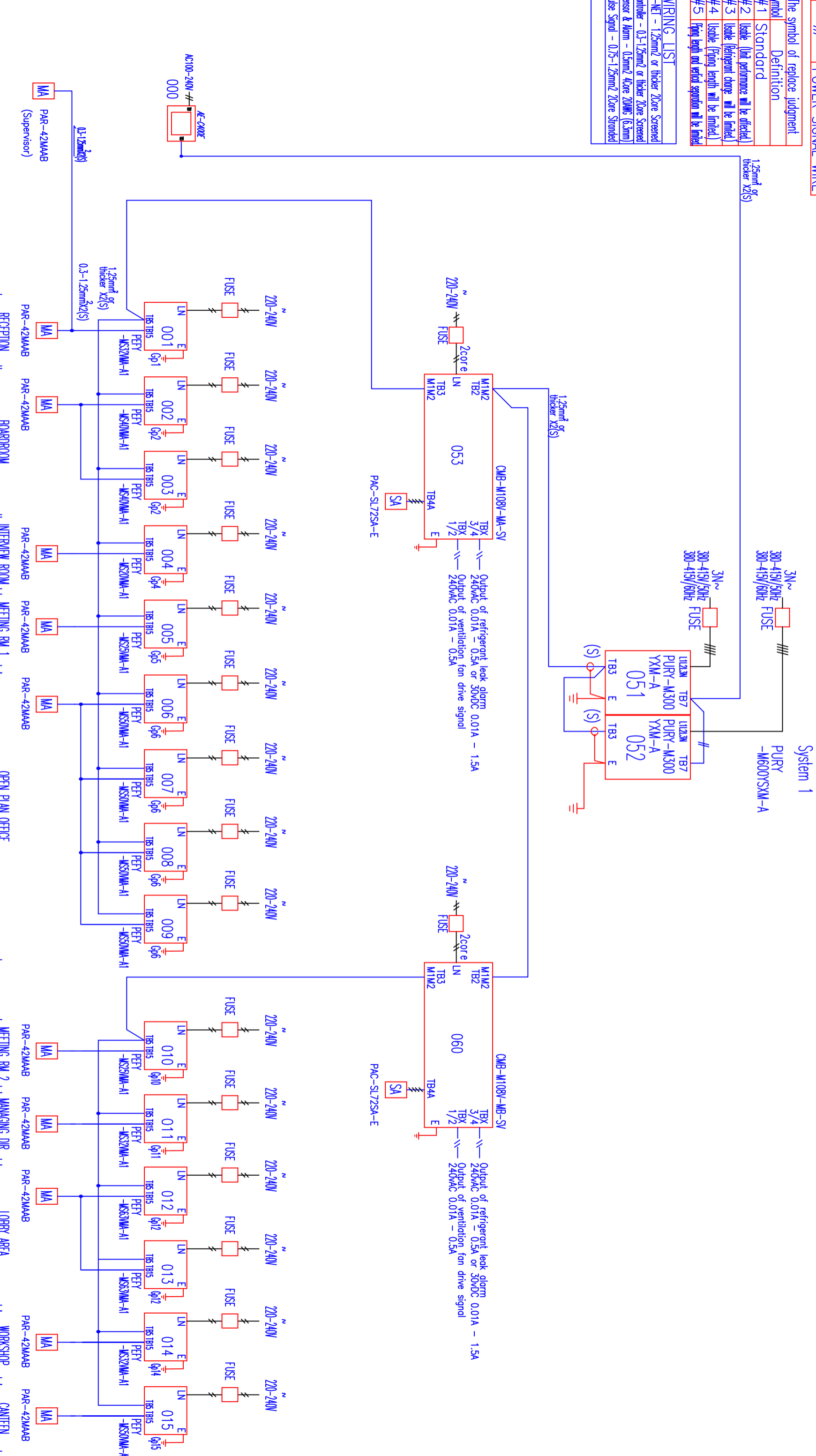
The symbol of replace judgment

Symbol	Definition
#1	Standard
#2	Usable (Unit performance will be affected.)
#3	Usable (Behavioral change will be limited.)
#4	Usable (Piping length will be limited.)
#5	Piping length and vertical separation will be limited.

WIRING LIST	
M-NET	- 1.25mm ² or thicker 2Core Screened
Controller	- 0.3-1.25mm ² or thicker 2Core Screened
Sensor & Alarm	- 0.5mm ² 4Core 20AWG (0.5mm)
Pulse Signal	- 0.75-1.25mm ² 2Core Stranded

CITY MULTI YXM SCENE 4 – OFFICE
 SYSTEM SCHEMATIC DWG.
 WIRING SCHEMATIC – PRODUCT STANDARD

Appropriate Circuit Protection Device in accordance with local government regulations are mandatory required such as GFI(Interrupter type) and MB etc.
 Please refer the amount of pre-charge and the formula of calculation which is mentioned on the data book.
 1.25mm² (16 AWG) : 1.25mm² (16 AWG) or more. 1.25mm² (16 AWG) : 1.25mm² (16 AWG) or more.
 Warning: HRF pipe size is dependent on pipe length, please confirm before implementation.



REMARKS

MITSUBISHI ELECTRIC
 PMD – MARKET SUPPORT
 REVISED ON 12/03/2026