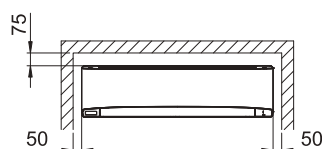
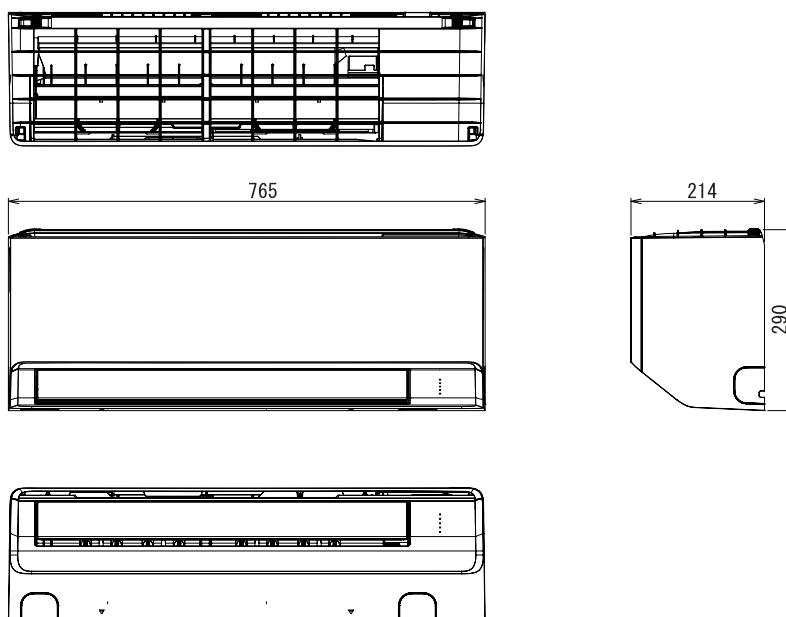


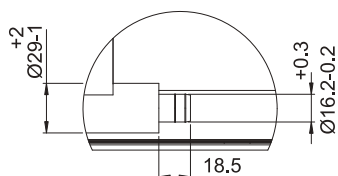
## 3.2 Dimensional Data

### 3.2.1 Wall Mounted Type S-2545PK4E

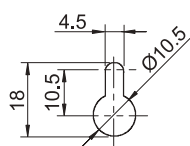
unit :mm



Minimum space requirements for installation

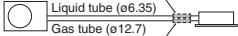
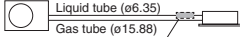


Detailed view B



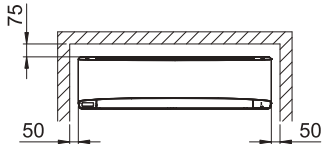
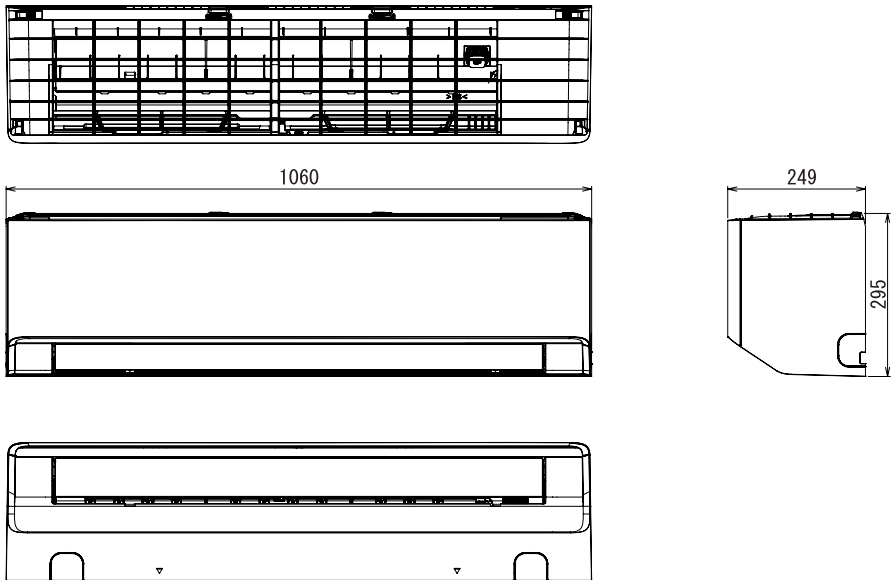
Detailed view C

①	Refrigerant tubing (liquid tube)	S-2545PK4E : $\phi 6.35$ S-5010PK4E : $\phi 9.52$ ( $\phi 6.35$ )
②	Refrigerant tubing (gas tube)	S-2545PK4E : $\phi 12.7$ S-5010PK4E : $\phi 15.88$ ( $\phi 12.7$ )
③	Drain hose	
④	Rear panel	
⑤	Rear panel fixing holes	( $\phi 5.0$ holes or as shown in figure "C")
⑥	Tubing and wiring holes ( $\phi 70$ )	

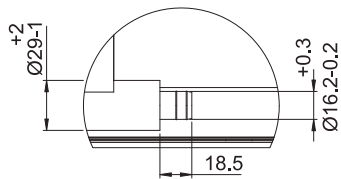
Outdoor PZ3 and PZH3 series (Type 50 and 60)	Outdoor PZ3 series (Type 71)
Connect the liquid socket tube B ( $\phi 6.35$ - $\phi 9.52$ ) to the liquid tubing side indoor unit  Connect the gas socket tube A ( $\phi 12.7$ - $\phi 15.88$ ) to the gas tubing side indoor unit	 Connect the liquid socket tube B ( $\phi 6.35$ - $\phi 9.52$ ) to the liquid tubing side indoor unit

3.2.2 Wall Mounted Type S-5010PK4E

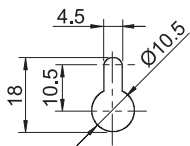
unit :mm



Minimum space requirements for installation

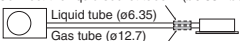
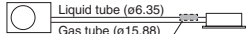


Detailed view B



Detailed view C

①	Refrigerant tubing (liquid tube) S-2545PK4E : ø6.35 S-5010PK4E : ø9.52 (ø6.35)
②	Refrigerant tubing (gas tube) S-2545PK4E : ø12.7 S-5010PK4E : ø15.88 (ø12.7)
③	Drain hose
④	Rear panel
⑤	Rear panel fixing holes (Ø5.0 holes or as shown in figure “C”)
⑥	Tubing and wiring holes (Ø70)

Outdoor PZ3 and PZH3 series (Type 50 and 60)	Outdoor PZ3 series (Type 71)
Connect the liquid socket tube B (ø6.35 - ø9.52) to the liquid tubing side indoor unit  Connect the gas socket tube A (ø12.7 - ø15.88) to the gas tubing side indoor unit	 Connect the liquid socket tube B (ø6.35 - ø9.52) to the liquid tubing side indoor unit