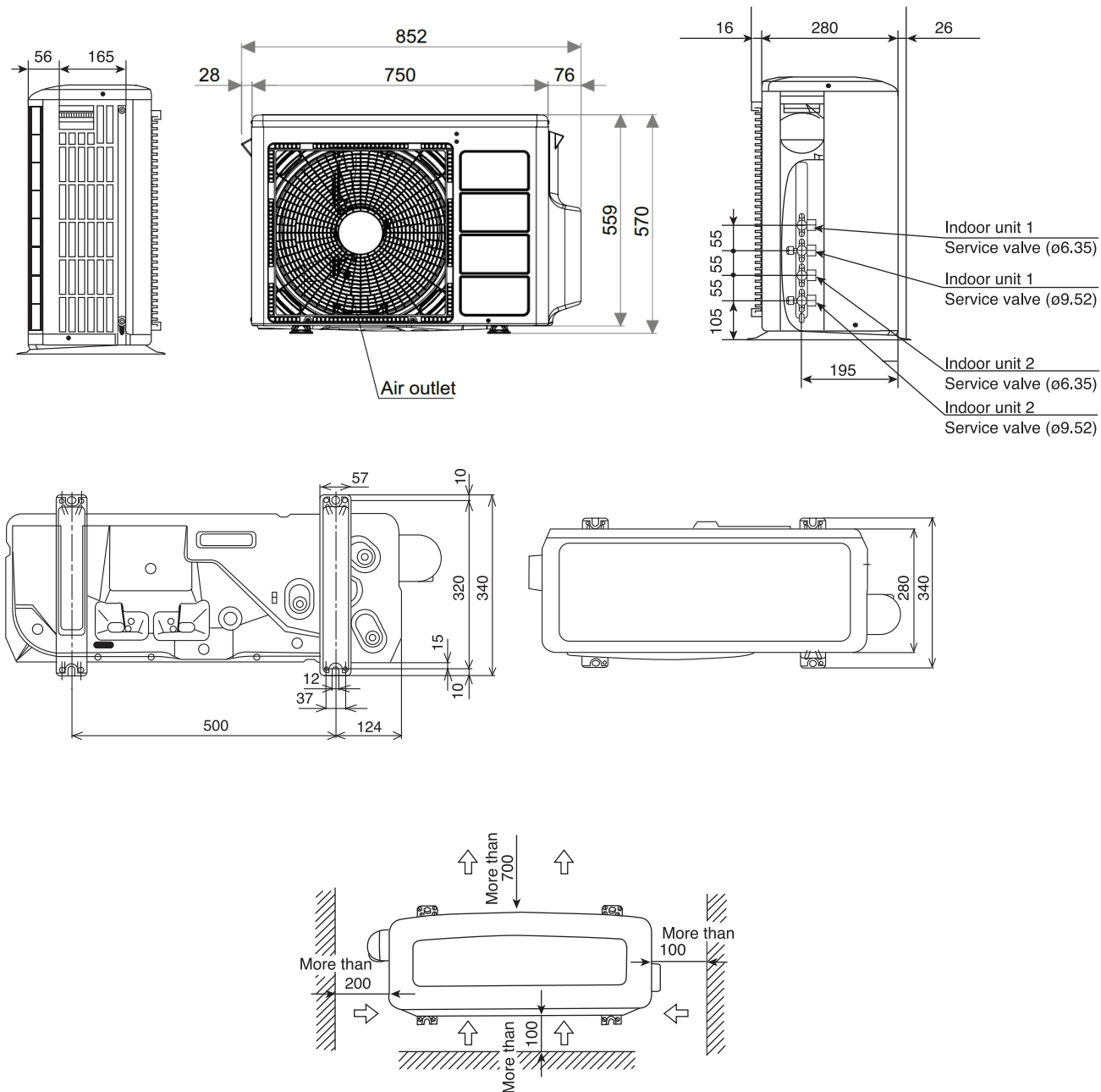


CONSTRUCTION AND DIMENSIONAL DIAGRAM

MODEL RAM-E40N2HAE

Unit: mm



Note:

1. Insulated pipes should be used for both small and large diameter pipes.
2. Piping length should be within 35m in total.
3. Height difference of piping between indoor unit and outdoor unit should be within 20m.
4. Overhead clearance of outdoor unit should be 200mm to allow servicing.
5. For electrical connection, please refer to the installation manual.

ATTENTION

During service, before opening the side cover, please switch off power supply.

CONSTRUCTION AND DIMENSIONAL DIAGRAM

MODEL RAM-E53N2HAE

