

Technical Bulletin

Number	M037
Subject	AE-C400E/EW-C50E Integrated Control
Date	17 March 2026

AE-C400E/EW-C50E Integrated Control

To set up Integrated Control on multiple AE-C400E & EW-C50E to be controlled via a customer's internal network, this can only be achieved by using the AE-C400E Initial Settings Tool. In order to complete, please follow the following instructions.

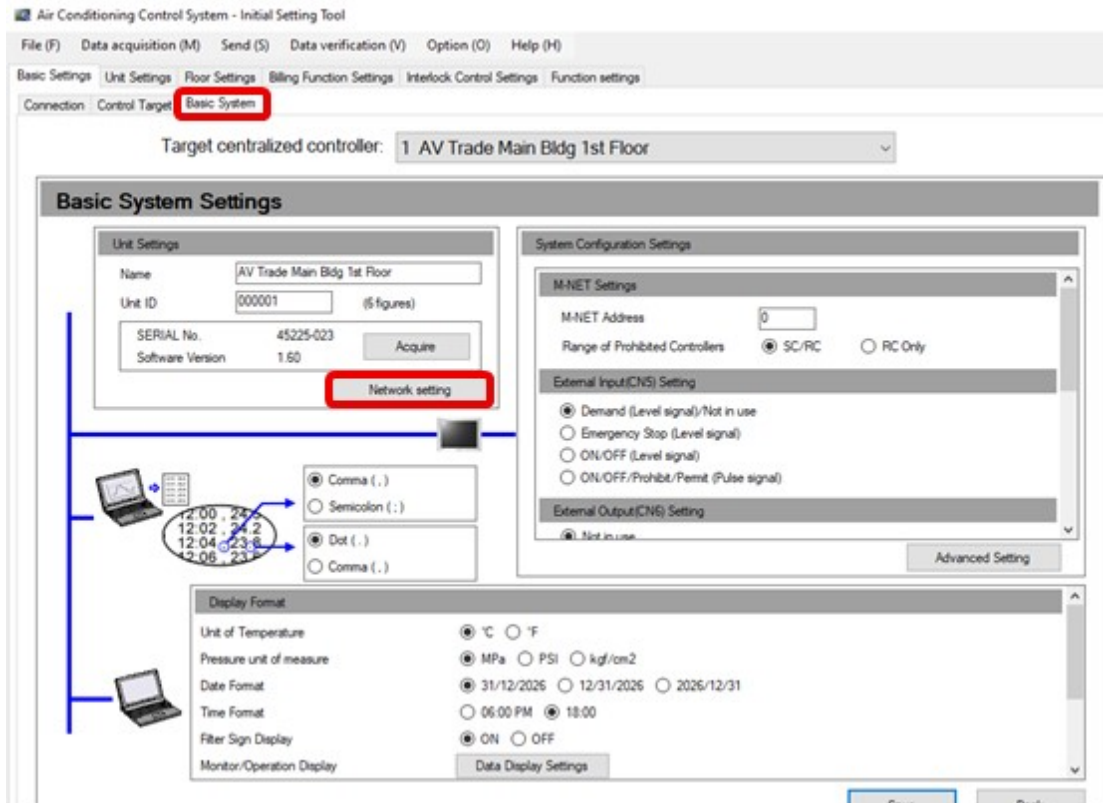
Step 1:

Enter the IP addresses of the Central Controller(s) & Expansion Controller(s) and log in via the "Data Acquisition" tab:

	Centralized controller	Destination IP address/host name
1	<input checked="" type="checkbox"/> AE-C400 (with LCD)	192.168.1.1
2	<input checked="" type="checkbox"/> EW-C50 (without LCD)	192.168.1.2
3	<input type="checkbox"/>	
4	<input type="checkbox"/>	
5	<input type="checkbox"/>	
6	<input type="checkbox"/>	
	<input type="checkbox"/>	

Technical Bulletin

These IP Addresses can be changed to any addresses the customer requires via the “Basic System” tab and then “Network Setting”



Technical Bulletin

Then type in the required IP Address & Subnet Mask & click the "Edit" tab

The screenshot shows a 'Network setting' dialog box with the following sections:

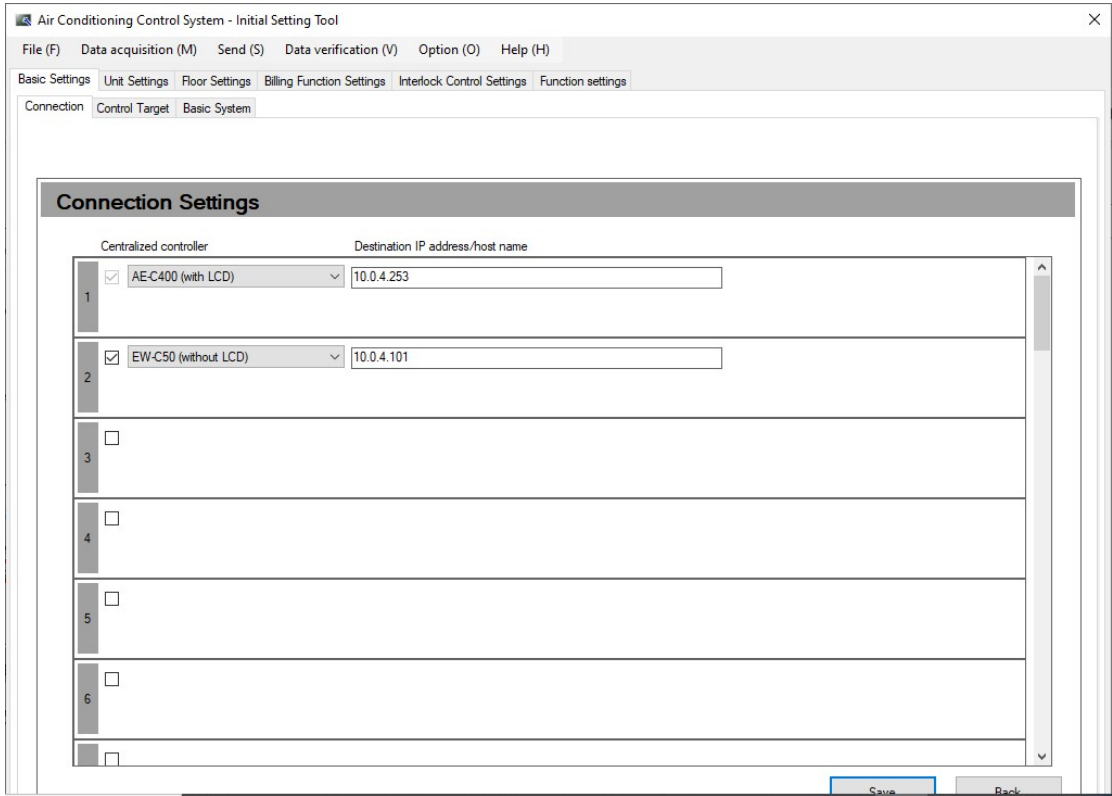
- LAN1 Settings:** Includes checkboxes for 'Use DHCP' and 'Automatically obtain DNS server settings'. Fields for IP Address, Subnet Mask, Gateway, MAC Address, Preferred DNS Server, and Alternate DNS Server. The IP Address and Subnet Mask fields are highlighted with a red box.
- LAN2 Settings:** Similar to LAN1, with fields for IP Address, Subnet Mask, Gateway, MAC Address, Preferred DNS Server, and Alternate DNS Server.
- Proxy Settings:** Includes a checkbox for 'Use a proxy server' and fields for IP Address/Host Name, Port, User Name, and Password. A 'Show Password' checkbox is also present.
- APN Settings (Optional):** Includes a checkbox for 'Use user APN settings', an APN field, and radio buttons for Authentication (None, PAP, CHAP). Fields for User Name and Password are also present, along with a 'Show Password' checkbox.
- Cloud Connection Settings:** Includes a checked checkbox for 'Available'.

At the bottom of the dialog, there are three buttons: 'Acquire' (highlighted with a blue box), 'Edit' (highlighted with a red box), and 'Close'.

Please note, after editing the addresses you must switch off the controller(s) for a few minutes (for EW-C50E Expansion Controllers please remember to reset SW1 to 0) and then power up.

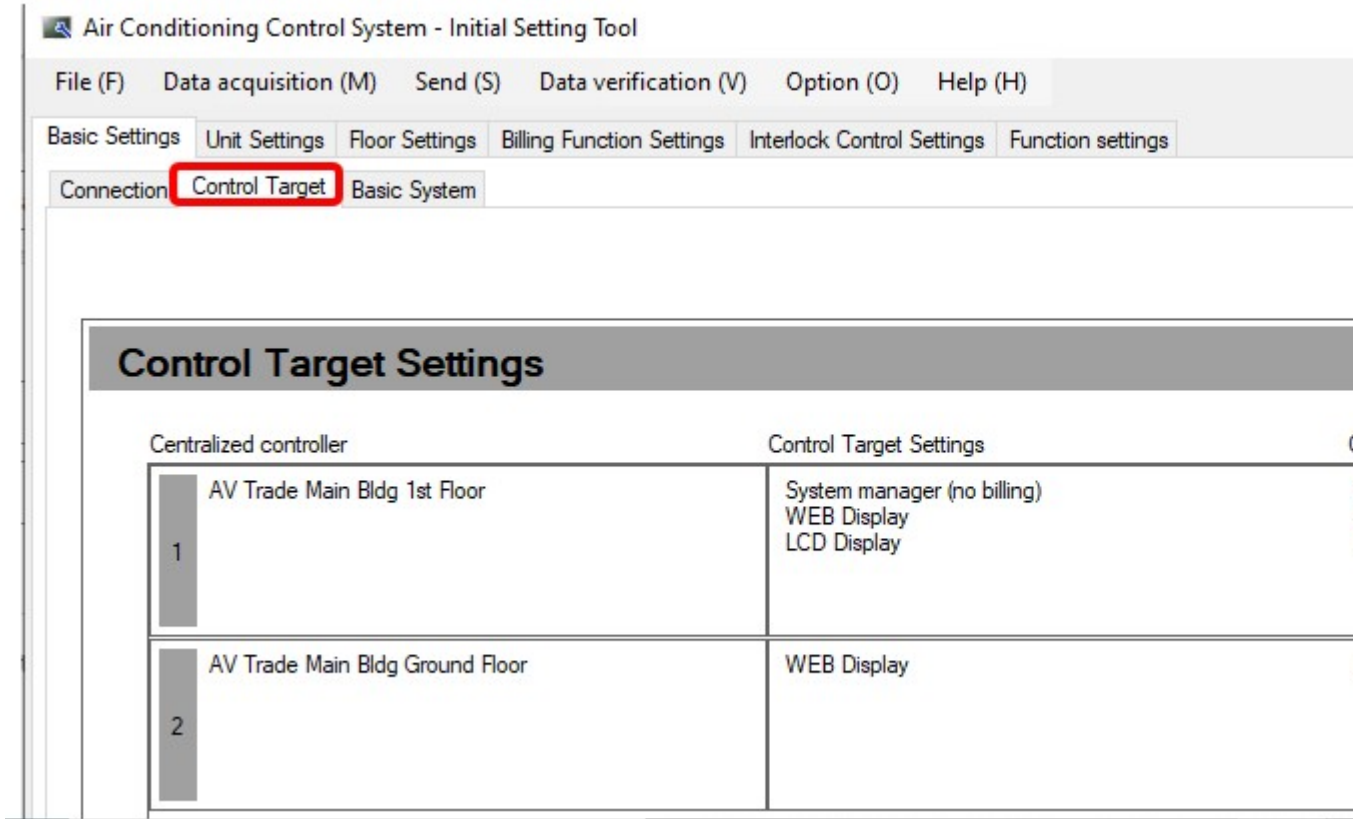
Technical Bulletin

Example below:



Step 2

Click on Control Target:



Technical Bulletin

Step 3

Edit the Control Target Settings in Centralized Controller 1 to include additional controllers (2, 3, 4, etc)

Control Target Settings		
Centralized controller	Control Target Settings	Control
1 AV Trade Main Bldg 1st Floor	System manager (no billing) WEB Display LCD Display	1 2 1 2 1 2
2 AV Trade Main Bldg Ground Floor	WEB Display	2

Centralized Controller Settings

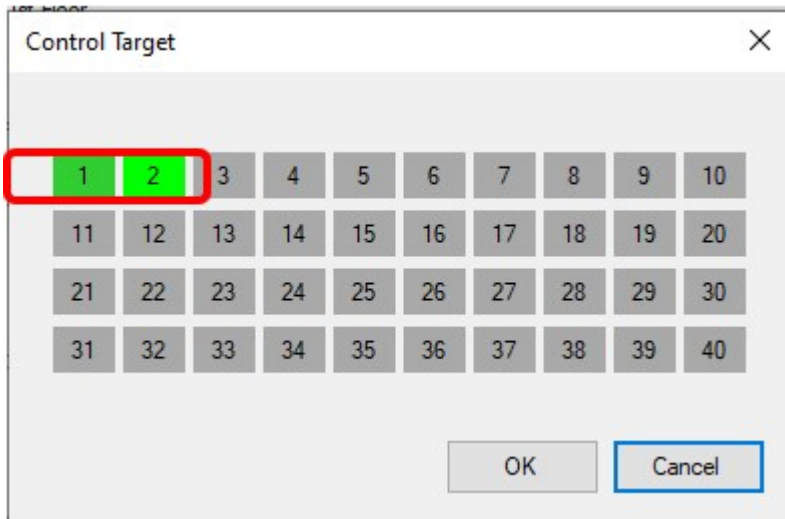
1 AV Trade Main Bldg 1st Floor

System manager
 Use the billing function

Control Target		
WEB Display	1, 2	Edit
LCD Display	1, 2	Edit

OK Cancel

Technical Bulletin



Step 4

Click "Send to all controllers"

