

HITACHI

# airHome 400

The connected air-to-air heat pump: essential for your air quality

R32  
REFRIGERANT



FROST  
WASH

## SINGLE SPLIT RANGE

FROM 2 TO 7 kW



air

Cooling & Heating

# Inspired by you, **airHome** 400 adapts to your interior.

## Design for your comfort

### **Comfortable all year round**

Winter or summer, even in extreme temperatures, **airHome 400 ensures an ideal atmosphere in every room**, whether your home is multi-story or single-story.

### **Performance and energy savings**

The airHome 400 offers heating & cooling performance up to A++.

**It will help you save energy all year round.**

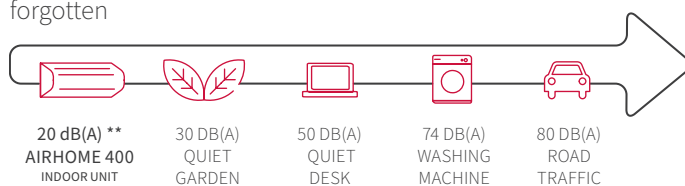


### **Quick heating & cooling**


An air flow rate of up to 663m<sup>3</sup>/h\* for greater cooling power and faster.


### **Still as quiet**

With a sound level starting from 20dB(A) during operation, the airHome 400 will blend perfectly into your home and be easily forgotten




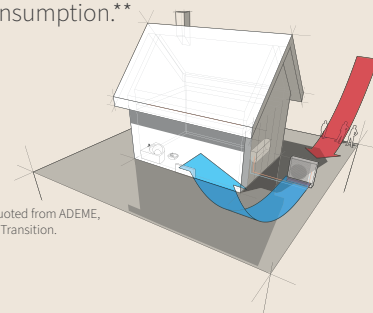
## How does an air-to-air heat pump work?

 In **winter**, outside heat is transferred indoors to heat the home.

 In **summer**, the heat inside the home is dissipated to the outside.

### **Inverter Technology:**

 Adaptation of power according to demand for up to 30% reduction in energy consumption.\*\*

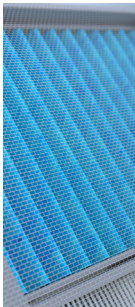


\*Up to 5kW  
\*\* 20dB(A) sound pressure at low blow speed, at 1 meter from the unit in free field conditions, depending on the model..

\*\* vs a traditional compressor. Quoted from ADEME, the French Agency for Ecological Transition.

# Designed for your indoor air quality

The air we breathe today, whether indoors or outdoors, affects our lives and our health. Hitachi's HVAC technology can help improve your daily life, inside your home, with its 3 unique functions:



## Anti-virus filter

**Diffuses clean and healthy air:** thanks to its new anti-virus filter H3N2, tested according to ISO 18184 and JIS L1902 standards, airHome 400 will provide healthy air.



## Mold Guard function

**Protects against mold & mildew:** preventive drying of the heat exchanger for uncompromising cleanliness thanks to the removal of moisture, thus preventing the formation of mold (active drying for up to 100 minutes).

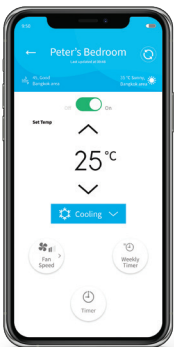


## FrostWash technology

Thanks to the FrostWash\* technology, a self-cleaning of the exchanger is performed and the impurities accumulated over time are captured and eliminated. It guarantees the long-term performance.

\*Tests carried out by Japan Textile Product Quality and Technology Center according to ISO 18184:2019 «Textiles - Determination of antiviral activity of textile products» and by Nissenken Quality Evaluation Center according to JIS L1902:2015 Bacterial Solution Absorption Method and by Kitasato Research Environmental Science (test n°2020-0650).

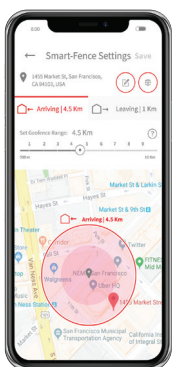
# Easy control of your unit



## Via airCloud Go app Wi-fi included as standard

airHome 400 is equipped with wi-fi as standard (box included in the unit) and can be controlled remotely via the airCloud Go application.

- ✓ Compatible with Google Home & Amazon Alexa



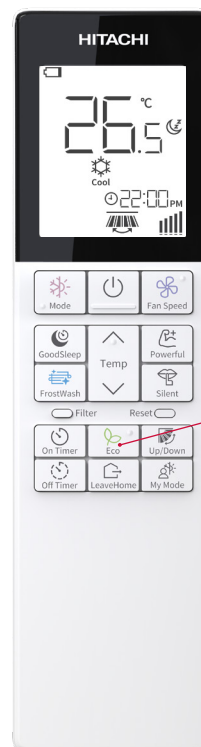
## Unique Smart Fence function\*\*

airHome 400 automatically adjusts its mode from a user-defined perimeter when you leave or return to your home, thanks to your smartphone's GPS!



## Via its remote control with LED backlight

**Included as standard** (ref. : RC-AGU1EA0G)



## Easy to use!

- Indoor temperature management
- Fan speed
- Choice of mode (heating, cooling, etc.)
- Air flow direction



## Eco Mode:

Automatically increases (cooling mode) or decreases (heating mode) the set temperature.

\*\* Optional function can be disabled on your smartphone



INDOOR UNIT	UNIT	RAK-DJ18RHAE	RAK-DJ25RHAE	RAK-DJ35RHAE	RAK-DJ50RHAE	RAK-DJ60RHAE	RAK-DJ70RHAE
Cooling capacity (min-max)	kW	2,00 (0,90 - 2,50)	2,50 (0,90 - 3,10)	3,50 (0,90 - 4,00)	5,00 (1,90 - 5,20)	6,00 (1,75 - 6,80)	7,10 (1,75 - 7,50)
Heating capacity (min-max)	kW	2,50 (0,90 - 3,20)	3,40 (0,90 - 4,40)	4,20 (0,90 - 5,00)	6,00 (2,2 - 7,30)	7,00 (1,75 - 7,80)	8,10 (1,75 - 8,30)
Heating capacity at -7°C without defrosting	kW	2,30	3,10	3,90	5,20	4,90	5,20
Heating capacity at -7°C with defrost <sup>(1)</sup>	kW	1,75	2,50	3,00	4,00	3,74	3,75
Sound pressure in cooling (SL / L / M / H / SH) <sup>(2)</sup>	dB(A)	20 / 24 / 29 / 33 / 37	20 / 24 / 30 / 36 / 40	20 / 27 / 35 / 39 / 43	28 / 33 / 38 / 42 / 46	30 / 33 / 42 / 45 / 48	30 / 36 / 42 / 45 / 48
Sound pressure in heating (SL / L / M / H / SH) <sup>(2)</sup>	dB(A)	20 / 24 / 30 / 34 / 38	20 / 25 / 31 / 36 / 41	20 / 28 / 36 / 40 / 44	25 / 31 / 37 / 42 / 47	30 / 33 / 42 / 45 / 48	30 / 36 / 42 / 45 / 48
Sound power	dB(A)	51	54	57	60	60	62
Air flow in cooling (SL / L / M / H / SH)	m³/h	204/255/384/431/545	204/255/394/513/620	204/302/446/608/653	265/360/528/608/663	360/510/700/940/1000	360/510/700/940/1000
Dehumidification	l/h	1,2	1,4	1,6	2	2,8	4,8
Dimensions (H x W x D)	mm	280 x 780 x 222				294 x 950 x 230	
Net weight	kg	7,7			8,4	10,5	
Power supply	V	220 - 230V					

OUTDOOR UNIT	UNITÉ	RAC-DJ18WHAE	RAC-DJ25WHAE	RAC-DJ35WHAE	RAC-DJ50WHAE	RAC-DJ60WHAE	RAC-DJ70WHAE
EER	-	3,45	3,57	3,23		3,31	2,70
Energy class (Cooling / Heating)	-	A++					
COP	-	4,20	3,65	4,00	3,71	3,50	3,10
Classe énergétique Chaud	-	A++			A+		
SEER (average climate)	-	7,5			7,0	6,80	6,20
SCOP (average climate)	-	4,60			4,50	4,10	4,00
Sound pressure in cooling <sup>(2)</sup>	dB(A)	45	47	48	50	53	54
Sound power	dB(A)	59	61	62	64	64	67
Dimensions (H x W x D)	mm	530 x 660 x 278			600 x 792 x 299	750 x 850 x 298	
Net weight	kg	23		24,4	39,1	48	
Power supply	V/Ph/Hz	230V / 1Ph / 50Hz					
Guaranteed cooling performance	°C	-10°C / +46°C				-15°C / +46°C	
Guaranteed heating performance	°C	-15°C / + 21°C					

(1) Power with defrost: calculation at -7°C and 85% humidity  
(2) Sound pressure measurements were taken at 1 meter from the unit in free field conditions (see technical catalog).

Compatible control



Fulldot wired remote control  
SPX-URFG

JOHNSON CONTROLS - HITACHI AIR CONDITIONING EUROPE SAS



hitachiaircon.com

The commercial warranties offered by Hitachi concern the parts making up our machines. They apply subject to installation in compliance with our technical specifications and to regular maintenance of the equipment by qualified personnel. The frequency of maintenance depends on the conditions of use of the equipment and current legislation. Ask your installer for advice.

\* JOHNSON CONTROLS - HITACHI AIR CONDITIONING EUROPE SAS participates in the Eurovent Certification Program for the AC / VRF / LCP-HP categories; data on certified models are listed in the Eurovent Directory (www.euroventcertification.com)