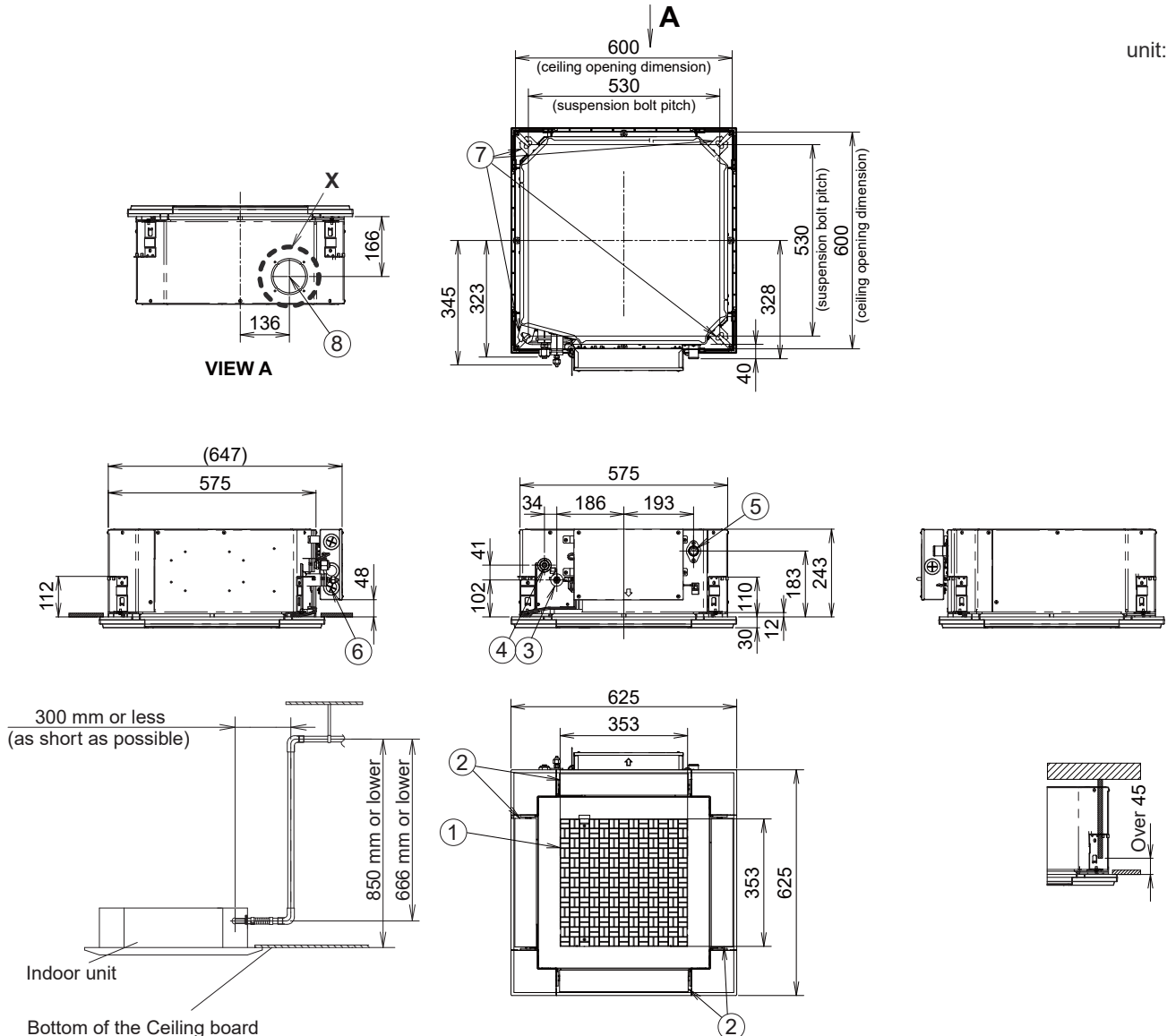


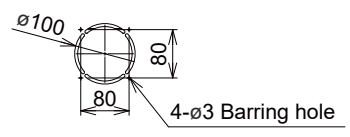
1-2-1-5. 4-Way Cassette 60 × 60 Type S-25PY3E, S-36PY3E, S-50PY3E, S-60PY3E

unit: mm



Bottom of the Ceiling board
 * Length of supplied drain pipe = 250 mm

①	Air intake grille
②	Air outlet
③	Refrigerant piping (liquid pipe) 25,36,50:ø6.35 (flared) 60:ø9.52 (flared) *1
④	Refrigerant piping (gas pipe) 25,36,50:ø12.7 (flared) 60:ø15.88 (flared) *2
⑤	Drain tube connection port VP20
⑥	Power supply entry
⑦	Suspension bolt hole (4-11 × 26 slot)
⑧	Fresh air intake duct connection port (ø100) *3



Detailed view X

*1 When connecting with U-60PZ3E5A or U-60PZH3E5, connect the liquid socket tube (ø9.52-ø6.35) to the liquid tubing side indoor unit.
 *2 When connecting with U-60PZ3E5A or U-60PZH3E5, connect the gas socket tube (ø15.88-ø12.7) to the gas tubing side indoor unit.
 *3 Necessary to attach duct connecting flange (field supply).

<Filter dimension>
 362 × 362 × 15