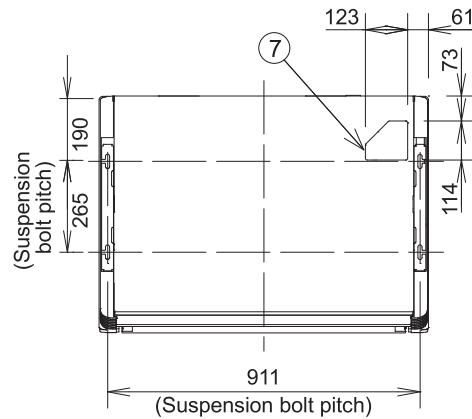
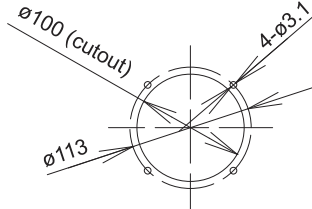


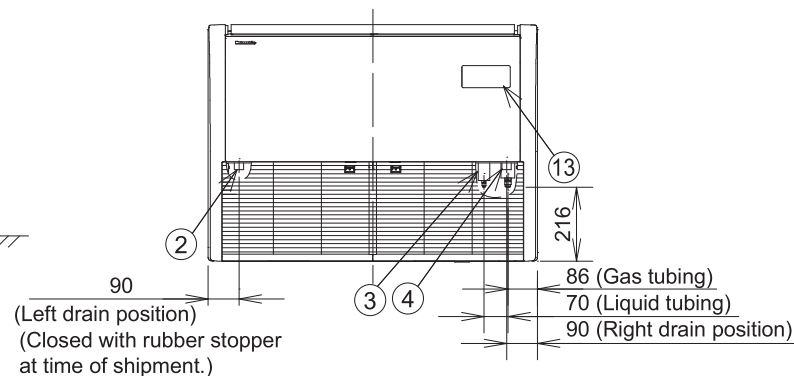
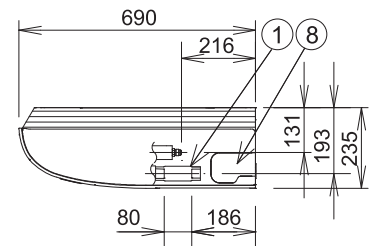
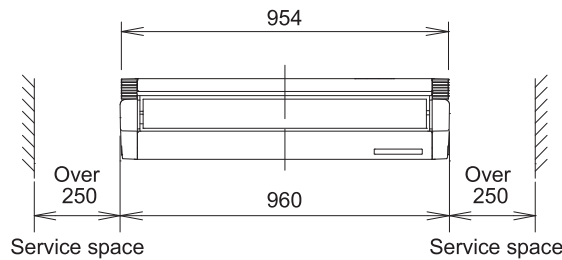
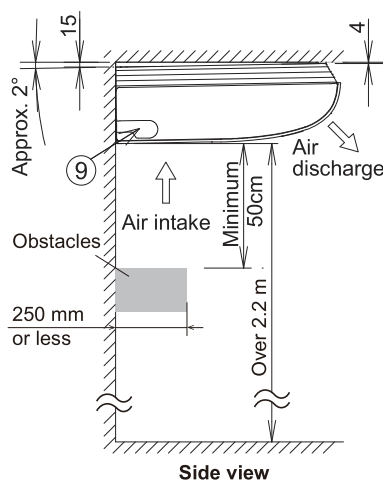
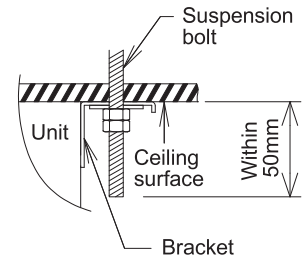
# 1-2-1-4. Ceiling Type S-3650PT3E

unit :mm

Detailed view of intaking  
outside air duct connection port

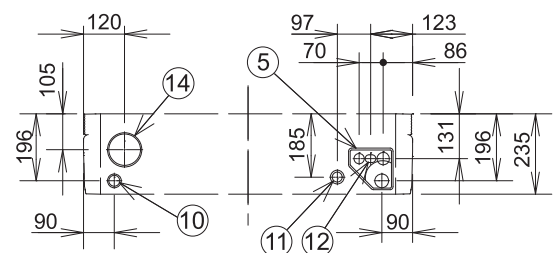


Distance of each exposed  
bolt must be of equal length  
within 50mm.

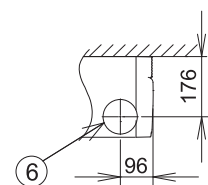


①	Drain port VP20 (inside diameter $\phi 26$ mm, drain hose supplied)
②	Left drain position
③	Refrigerant liquid tubing ( $\phi 6.35$ mm, flare connection)
④	Refrigerant gas tubing ( $\phi 12.7$ mm, flare connection)
⑤	Cover of rear tubing hole
⑥	Tubing hole on wall surface ( $\phi 100$ mm)
⑦	Upper side tubing port
⑧	Right side drain hose outlet port (cutout)
⑨	Left side drain hose outlet port (cutout)
⑩	Left-rear side drain hose outlet port (cutout)
⑪	Power inlet port
⑫	Remote control wiring and inter-unit wiring inlet port
⑬	Wireless remote controller receiver installation location
⑭	Outside air intake duct connection port ( $\phi 100$ mm, cutout)

Hole position of indoor unit rear-side  
(Figure shows view from front)



Tubing hole position on wall surface  
(Figure shows view from front)



<Filter dimension>

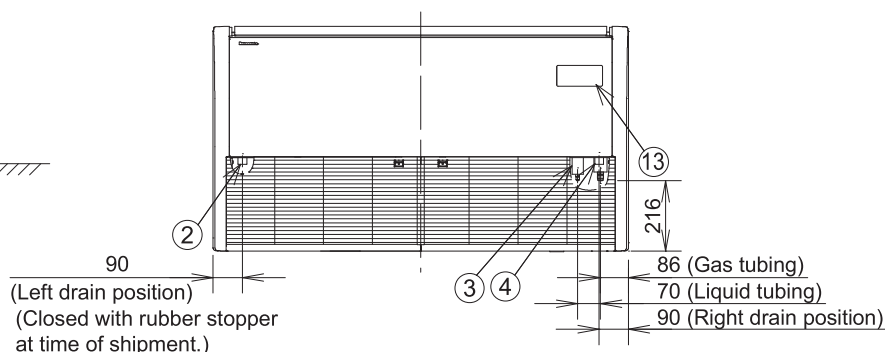
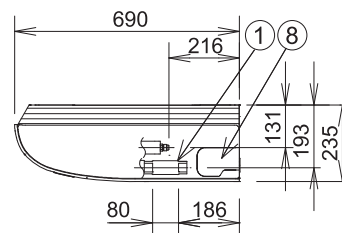
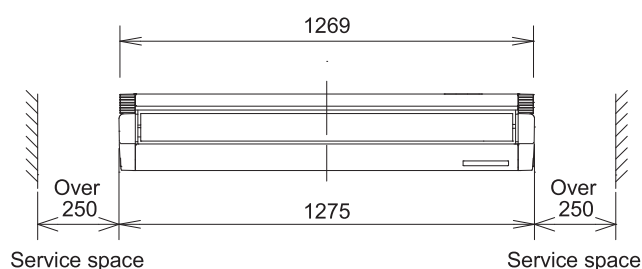
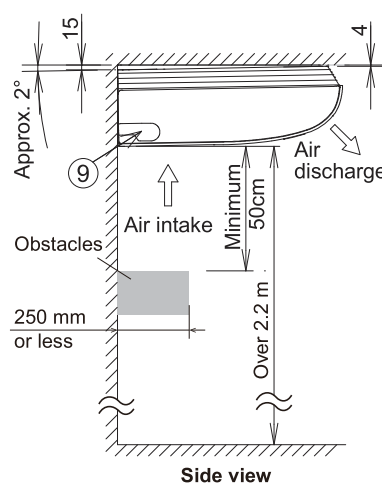
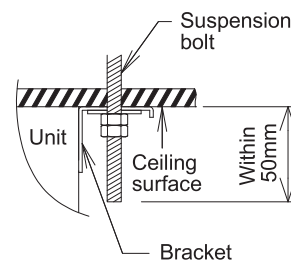
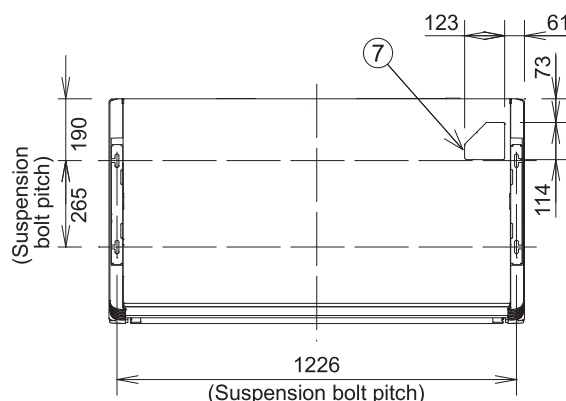
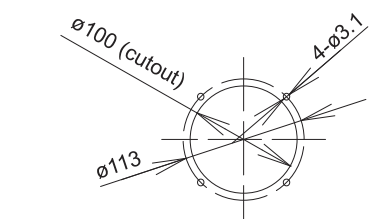
(421 × 250 × 16) × 2 pcs.

#### 1-2-1-4. Ceiling Type S-6071PT3E

unit :mm

Distance of each exposed bolt must be of equal length within 50mm.

Detailed view of intaking  
outside air duct connection port



①	Drain port VP20 (inside diameter ø26mm, drain hose supplied)
②	Left drain position
③	Refrigerant liquid tubing (ø9.52mm, flare connection) *1
④	Refrigerant gas tubing (ø15.88mm, flare connection) *2
⑤	Cover of rear tubing hole
⑥	Tubing hole on wall surface (ø100mm)
⑦	Upper side tubing port
⑧	Right side drain hose outlet port (cutout)
⑨	Left side drain hose outlet port (cutout)
⑩	Left-rear side drain hose outlet port (cutout)
⑪	Power inlet port
⑫	Remote control wiring and inter-unit wiring inlet port
⑬	Wireless remote controller receiver installation location
⑭	Outside air intake duct connection port (ø100mm, cutout)

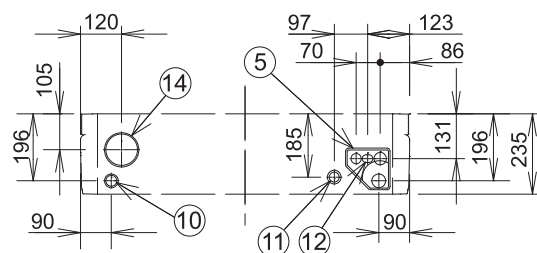
\*1 When connecting with U-60PZ3E5, U-71PZ3E5 or U-60PZH3E5, connect the liquid socket tube (ø9.52-ø6.35) to the liquid tubing side indoor unit.

\*2 When connecting with U-60PZ3E5 or U-60PZH3E5, connect the gas socket tube (ø15.88-ø12.7) to the gas tubing side indoor unit.

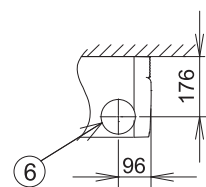
&lt;Filter dimension&gt;

(579 × 250 × 16) × 2 pcs.

Hole position of indoor unit rear-side  
(Figure shows view from front)



Tubing hole position on wall surface  
(Figure shows view from front)



1-2-1-4-3