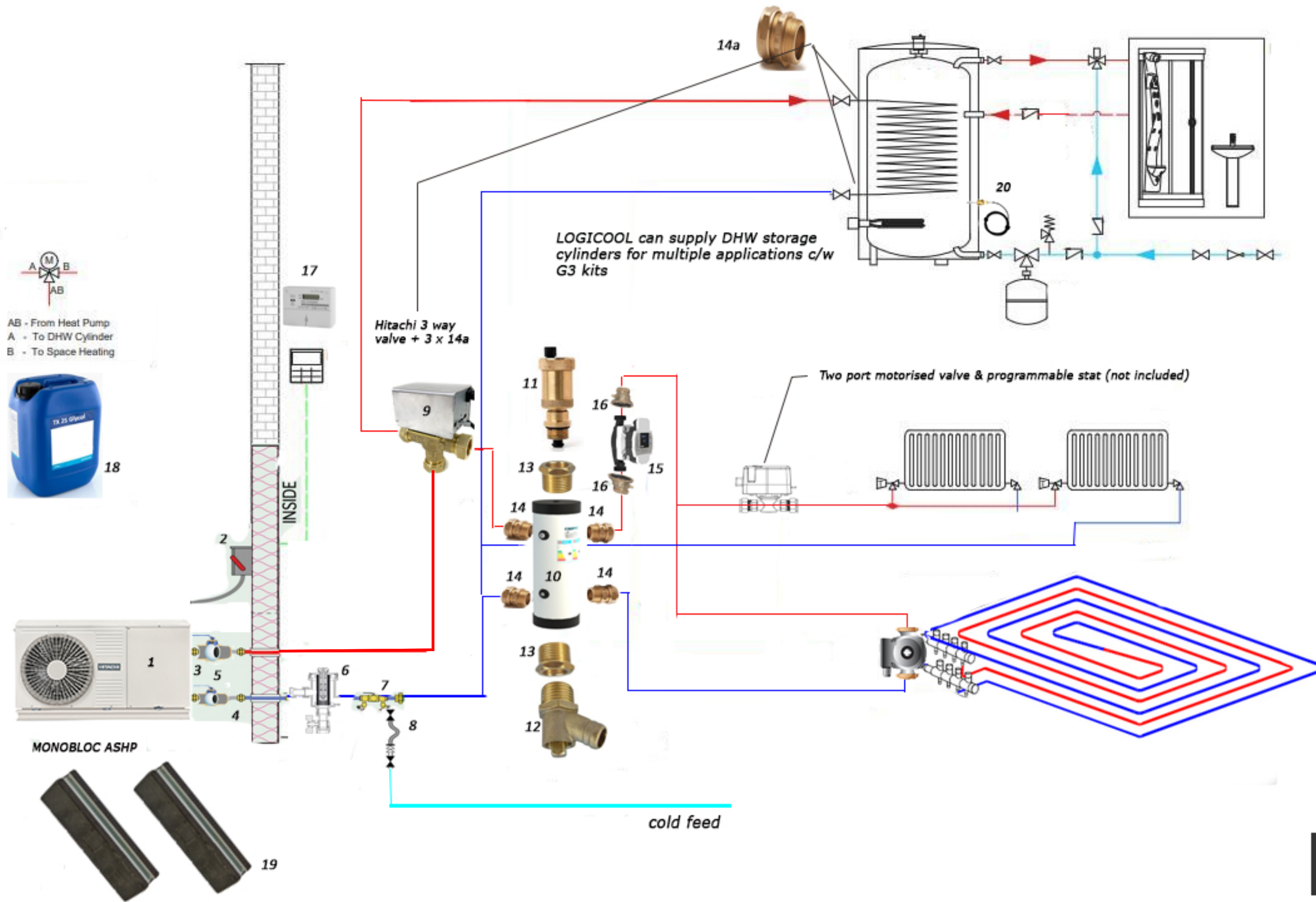


| | |
|-----|---|
| 1 | Hitachi Mono Yutaki M Series |
| 2 | 32 Amp Isolator IMO |
| 3 | Brass Nipples x 2 |
| 4 | 750mm long 1" swivel bent female x 28mm copper insulated hoses (pair) |
| 5 | 1.1/4" F swivel x 1" M extended lever ball isolating valve x 2 |
| 6 | 28mm Magnetic Filter |
| 7 | 28mm Flow Balancing Valve with fill & flush Ports |
| 8 | 15mm Filling Loop with gauge WRAS approved |
| 9 | Hitachi 1" Female three way diverting valve 230v |
| 10 | 50 Litre Buffer Vessel 4 x 1" & 2 x 3/4" Female connections (Rated ERP B) |
| 11 | 1/2" Male Automatic Air Vent |
| 12 | 1/2" Male Drain Cock |
| 13 | 3/4" x 1/2" Reducing Brass Bush x 2 |
| 14 | 1" Male x 28mm iron to copper adaptors (Buffer Vessel) x 4 |
| 14A | 1" Male x 28mm iron to copper adaptors (Three port valve & DHW coil) x 5 |
| 15 | Duca APE25-8-130 230V/1ph/50Hz Heating circulating pump |
| 16 | 28mm x 1.1/2" Pump ball isolating valve x 2 |
| 17 | Electric Generation Meter (MCS Requirement) |
| 18 | Thermoblend Glycol 25 litre Drum |
| 19 | Single 600mm Standard Rubber Mount & M10 x 40 stud nuts x 3 Sets |
| 20 | Third Party Cylinder DHW Temp Sensor |

HITACHI 11-16kW Fitting Kit



| | |
|-----|--|
| 1 | Hitachi Mono Yutaki M Series |
| 2 | 32 Amp Isolator IMO |
| 3 | Brass Nipples x 2 |
| 4 | 750mm long 1" swivel bent female x 28mm copper insulated hoses (pair) |
| 5 | 1.1/4" F swivel x 1" M extended lever ball isolating valve x 2 |
| 6 | 28mm Magnetic Filter |
| 7 | 28mm Flow Balancing Valve with fill & flush Ports |
| 8 | 15mm Filling Loop with gauge WRAS approved |
| 9 | Hitachi 1" Female three way diverting valve 230v |
| 10 | 2.5 Litre Buffer Vessel 4 x 1" & 2 x 3/4" Female connections (Rated ERP B) |
| 11 | 1/2" Male Automatic Air Vent |
| 12 | 1/2" Male Drain Cock |
| 13 | 3/4" x 1/2" Reducing Brass Bush x 2 |
| 14 | 1" Male x 28mm iron to copper adaptors (Buffer Vessel) x 4 |
| 14A | 1" Male x 28mm iron to copper adaptors (Three port valve & DHW coil) x 5 |
| 15 | Duca APE25-8-130 230V/1ph/50Hz Heating circulating pump |
| 16 | 28mm x 1.1/2" Pump ball isolating valve x 2 |
| 17 | Electric Generation Meter (MCS Requirement) |
| 18 | Thermoblend Glycol 25 litre Drum |
| 19 | Single 600mm Standard Rubber Mount & M10 x 40 stud nuts x 2 Sets |
| 20 | Third Party Cylinder Temperature Sensor |

HITACHI 5 - 8kW Fitting Kit