

PEA-M R32

Large Capacity Ceiling Concealed Ducted System
Standard Inverter Heat Pump (Three Phase)

Mr.SLIM™

The cost-effective **PEA-M Standard Inverter** large capacity ducted system offers high levels of design flexibility and energy efficiency for larger scale heating and cooling applications. The unique design allows the fan and coil sections to be split, facilitating installation where ceiling void space is limited.

Working with extended lengths of ductwork through a 250Pa fan setting, the system is ideal for hospitality, warehouse, atria and large retail applications.

R32 *INVERTER*

Key Features & Benefits:

- Full heating capacity down to -3°C
- Unit can be separated in to two parts, allowing ease of installation in a congested ceiling or through a service hatch (re-assembly required for operation)
- Energy usage display (requires PAR-41MAA controller)
- 'Backup and Rotate' feature reduces load on individual units and prolongs product life (requires PAR-41MAA controller)
- Advanced airflow and smart defrost features to maximise comfort levels
- Ultimate ductwork flexibility through 5 Static Pressure settings up to 250Pa
- Pre-filter included as standard



R32

INVERTER



PEA-M INDOOR UNITS		PEA-M200LA2	PEA-M250LA2
CAPACITY (kW)	Heating (nominal)	22.4 (6.8-25.0)	27.0 (7.3-31.0)
	Cooling (nominal)	19.0 (9.2-22.4)	22.0 (9.9-27.0)
	Heating (UK)	16.8 (5.1-18.8)	20.3 (5.5-23.3)
	Cooling (UK)	16.5 (8.0-19.5)	19.1 (8.6-23.5)
SHF (nominal)		0.80	0.79
COP / EER (nominal)		3.40 / 3.12	3.30 / 3.00
SCOP (ηsh) / SEER (ηsc) (BS EN14825)		3.6 (141.2%) / 5.4 (216.3%)	3.5 (139.2%) / 5.3 (212.7%)
AIRFLOW (l/s)	Lo-Mi-Hi	700-850-1000	833-1016-1200
PIPE SIZE mm (in)	Gas	28.58 (1 1/8")	28.58 (1 1/8")
	Liquid	9.52 (3/8")	12.7 (1/2")
EXTERNAL STATIC PRESSURE (Pa)		75 / 100 / 150 / 200 / 250	75 / 100 / 150 / 200 / 250
SOUND PRESSURE LEVEL (dBA) (60Pa)	Lo-Mi-Hi	34.5-39-43	37.5-42-46
SOUND POWER LEVEL (dBA) (60Pa)	Lo-Mi-Hi	62-63-64	63-65-66
DIMENSIONS (mm)	Width x Depth x Height	1370 x 1120 x 470	1370 x 1120 x 470
WEIGHT (kg)		88	88
ELECTRICAL SUPPLY		220-240v 50Hz	220-240v 50Hz
PHASE		Single	Single
POWER INPUT (kW)		0.32	0.48
RUNNING CURRENT (A) [MAX]		4.8	4.8
FUSE RATING (BS88) - HRC (A)		6	6
MAINS CABLE No. Cores		3	3
INTERCONNECTING CABLE	No. Cores	3	3
WIRED REMOTE CONTROLLER REFERENCE		PAR-41MAA	PAR-41MAA

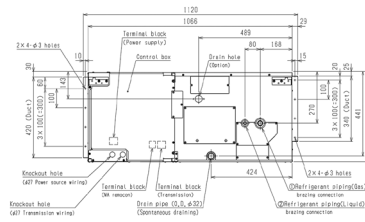
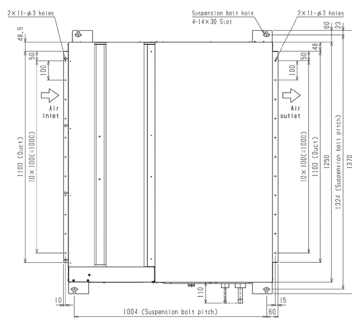
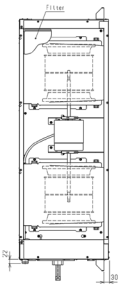
PUZ-M OUTDOOR UNITS		PUZ-M200YKA2	PUZ-M250YKA2
SOUND PRESSURE LEVEL (dBA)	Heating/Cooling	60 / 58	62 / 59
WEIGHT (kg)		129	138
DIMENSIONS (mm)	Width x Depth x Height	1050 x 330+40 x 1338	1050 x 330+40 x 1338
ELECTRICAL SUPPLY		380-415v, 50Hz	380-415v, 50Hz
PHASE		Three	Three
SYSTEM POWER INPUT (kW)	Heating/Cooling (nominal)	6.59 / 6.09	8.18 / 7.33
	Heating/Cooling (UK)	5.34 / 5.18	6.63 / 6.23
STARTING CURRENT (A)		5.0	5.0
SYSTEM RUNNING CURRENT (A)	Heating/Cooling [MAX]	10.08 / 9.62 [22.5]	12.18 / 11.22 [22.5]
FUSE RATING (BS88) - HRC (A)		25	25
MAINS CABLE No. CORES		5	5
MAX PIPE LENGTH (m)		70	70
MAX HEIGHT DIFFERENCE (m)		30	30
CHARGE REFRIGERANT (kg) / CO ₂ EQUIVALENT (t)	R32 (GWP 675) - 30m	5.60 / 3.78	6.80 / 4.59
MAX ADDITIONAL REFRIGERANT (kg) / CO ₂ EQUIVALENT (t)	R32 (GWP 675)	1.60 / 1.08	2.40 / 1.62

PEA-M DIMENSIONS

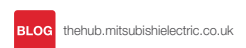
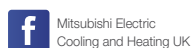
FRONT VIEW

UPPER VIEW

SIDE VIEW



Telephone: 01707 282880
email: air.conditioning@meuk.mee.com
les.mitsubishielectric.co.uk



UNITED KINGDOM Mitsubishi Electric Europe Living Environment Systems Division, Travellers Lane, Hatfield, Hertfordshire, AL10 8XB, England. Telephone: 01707 282880 Fax: 01707 278881
IRELAND Mitsubishi Electric Europe, Westgate Business Park, Ballymount, Dublin 24, Ireland. Telephone: (01) 419 8800 Fax: (01) 419 8890 International code: (003531)

Country of origin: United Kingdom - Italy - Turkey - Japan - Thailand - Malaysia. ©Mitsubishi Electric Europe 2023. Mitsubishi and Mitsubishi Electric are trademarks of Mitsubishi Electric Europe B.V. The company reserves the right to make any variation in technical specification to the equipment described, or to withdraw or replace products without prior notification or public announcement. Mitsubishi Electric is constantly developing and improving its products. All descriptions, illustrations, drawings and specifications in this publication present only general particulars and shall not form part of any contract. All goods are supplied subject to the Company's General Conditions of Sale, a copy of which is available on request. Third-party product and brand names may be trademarks or registered trademarks of their respective owners.

Note: Refer to 'Installation Manual' and 'Instruction Book' for further 'Technical Information'. The fuse rating is for guidance only and please refer to the relevant databook for detailed specification. It is the responsibility of a qualified electrician/electrical engineer to select the correct cable size and fuse rating based on current regulation and site specific conditions. Mitsubishi Electric's air conditioning equipment and heat pump systems contain a fluorinated greenhouse gas, R410A (GWP:2088), R32 (GWP:675), R407C (GWP:1774), R134a (GWP:1430), R513A (GWP:631), R454B (GWP:466), R1234ze (GWP:7) or R1234yf (GWP:4). *These GWP values are based on Regulation (EU) No 517/2014 from IPCC 4th edition. In case of Regulation (EU) No.626/2011 from IPCC 3rd edition, these are as follows. R410A (GWP:1975), R32 (GWP:550), R407C (GWP:1650) or R134a (GWP:1300).

Effective as of April 2023

