

Controls

Product Information

MelcoBEMS
Interface for BEMS solutions

Making a
World of
Difference



MelcoBEMS

One Modbus and BACnet
interface for BEMS solutions

Building Energy Management Systems (BEMS) provide efficient control and energy monitoring to a building.

MelcoBEMS will interface with BEMS to allow control of the Mitsubishi Electric air conditioning system with the addition of energy monitoring.

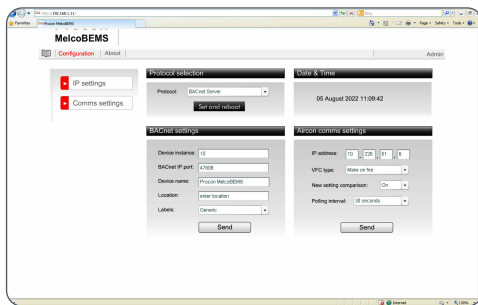
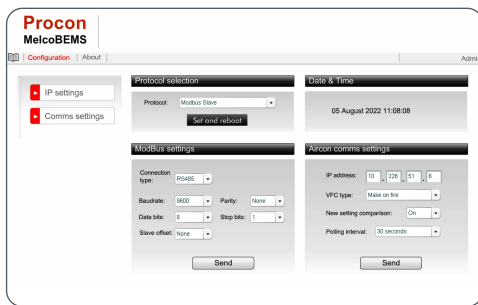
Key Features

- BACnet
- Modbus
- EB-50 energy monitoring integration
- Simple web page configuration
- Fire alarm interlock



Air Conditioning | Heating
Ventilation | Controls





		MelcoBEMS
Description		AG-150A Modbus BACnet Interface
Connect to		AG-150A and EB-50
Max Number of Units		50
Compatibility		M Series, Mr Slim, City Multi, Lossnay and PWFY
Power Supply		24VDC
Dimensions (mm) (WxDxH)		102 x 32 x 180
Network		Modbus RS485, RS232 and TCP/IP / BACnet TCP/IP
BEMS Compatibility		Cylon, Satchwell, Crestron, Invensys, Interactive Homes, North BT, Andover, Siemens, WEMS, Andover Controls, York BMS, Siemens, Priva Building Intelligence, Delta Controls, RDM
Control	On/Off	DI
	Mode	AI
	Setpoint	AI
	Fan Speed	AI
	Air Direction	AI
	Permit/Prohibit	DI
Monitor	Filter Sign	DI
	On/Off	DO
	Mode	AO
	Setpoint	AO
	Fan Speed	AO
	Air Direction	AO
	Permit/Prohibit	DO
	Filter Sign	DO
	Fault Codes	AO
	Room Temperature	AO
Daily kWh Energy	With EB-50 ^{*1}	
Monthly kWh Energy	With EB-50 ^{*1}	

Key: DI = Digital Input. DO = Digital Output. AI = Analogue Input. AO = Analogue Output.

*1 The MelcoBEMS can monitor indoor daily and monthly kWh when used in conjunction with EB-50 and PAC-YG60MCA on third party energy meters



Telephone: 01707 282880

email: air.conditioning@meuk.mee.com website: airconditioning.mitsubishielectric.co.uk

UNITED KINGDOM Mitsubishi Electric Europe Living Environmental Systems Division
Travellers Lane, Hatfield, Hertfordshire, AL10 8XB, England General Enquiries Telephone: 01707 282880 Fax: 01707 278881

IRELAND Mitsubishi Electric Europe Westgate Business Park, Ballymount, Dublin 24, Ireland
Telephone: Dublin (01) 419 8800 Fax: Dublin (01) 419 8890 International code: (003531)

Country of origin: United Kingdom – Japan – Thailand – Malaysia. ©Mitsubishi Electric Europe 2014. Mitsubishi and Mitsubishi Electric are trademarks of Mitsubishi Electric Europe B.V. The company reserves the right to make any variation in technical specification to the equipment described, or to withdraw or replace products without prior notification or public announcement. Mitsubishi Electric is constantly developing and improving its products. All descriptions, illustrations and specifications in this publication present only general particulars and shall not form part of any contract. All goods are supplied subject to the Company's General Conditions of Sale, a copy of which is available on request. Third-party product and brand names may be trademarks or registered trademarks of their respective owners.



Effective as of June 2014



Mitsubishi Electric UK's commitment to the environment

Follow us @meuk_les
Follow us @green_gateway

Connect with Green Gateway

mitsubishielectric2