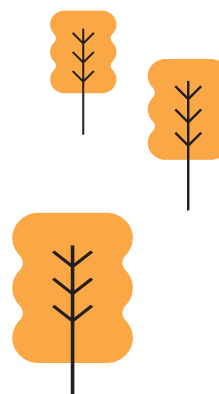




## PANASONIC PACi WATER HEAT EXCHANGER FOR CHILLED AND HOT WATER PRODUCTION

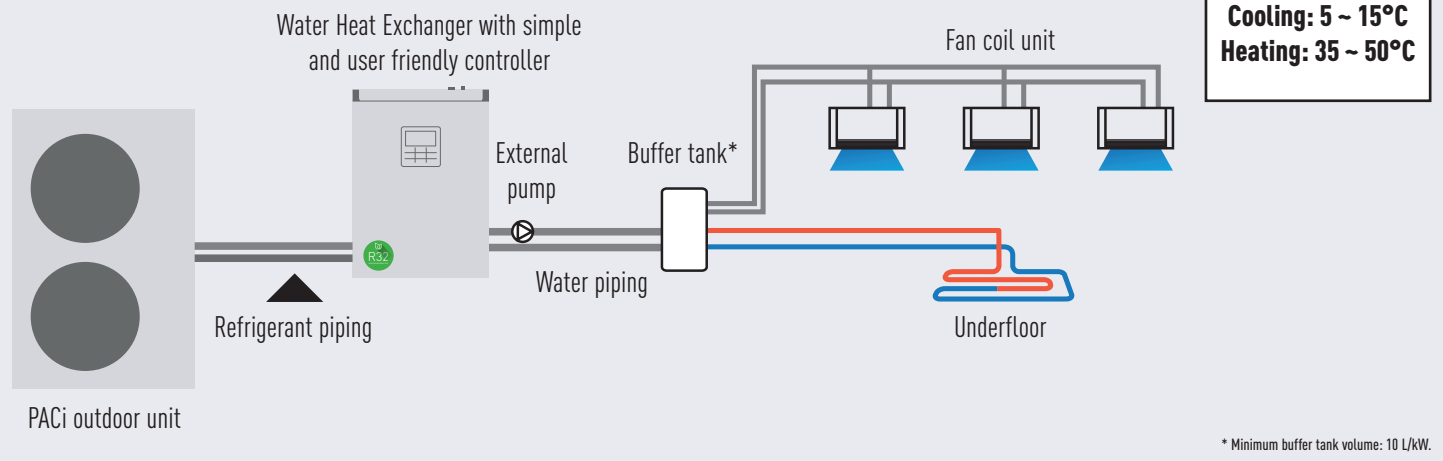
Panasonic introduces highly-efficient Water Heat Exchanger for PACi Series.

This ground-breaking product gives further possibilities of PACi solutions by adding hydronic options.



# HIGHLY-EFFICIENT WATER HEAT EXCHANGER FOR PACi SERIES

System example.



## 1 Cost Saving Solution

- A++ Energy efficiency class (scale from A+++ to D)
- Cost effective water projects thanks to lower cost for PACi compared to VRF

## 2 Space saving & Flexible positioning

- 2 installation possibilities (wall mounted / floor standing)
- Compact, lightweight unit design, only 27kg

## 3 Easy Installation, Maintenance

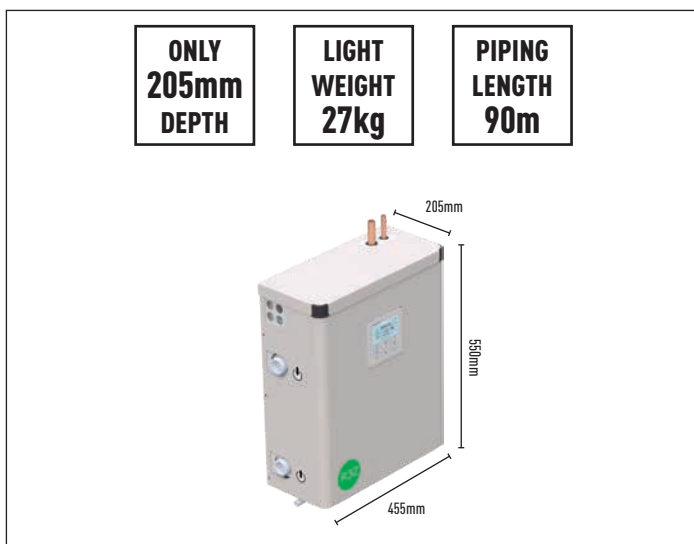
- Quick mounting process
- Flow switch kit is included as a standard
- Direct access to electrical box

## Space saving & Flexible positioning

### Compact and light unit.

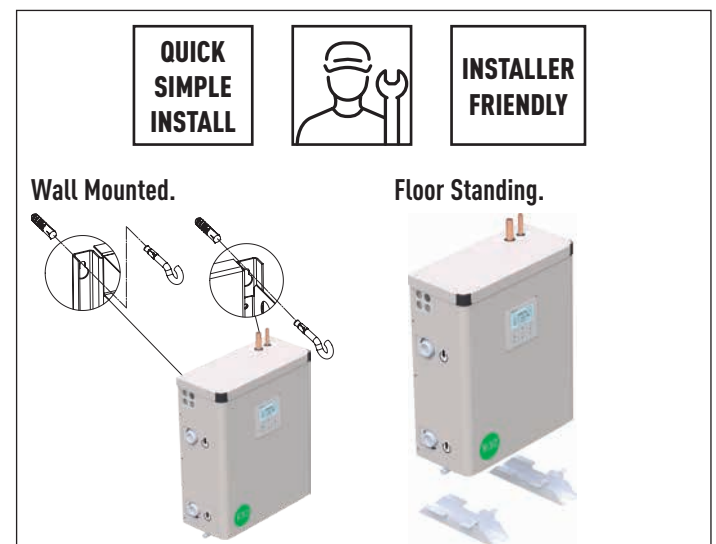
- Only 205mm depth fits within a limited space
- Lightweight design at only 27kg, makes it easy to maneuver and position
- Maximum total refrigerant piping length : 90m\*

\* 90m for PAW-200W5APAC.



### 2 installation options.

- Wall Mounted and Floor Standing installation options are available.
- Free-up floor space by using the Wall Mounted installation
- Quick Mounting Process with its lightweight compact design
- Make fixing holes → Fix 2 screws → Hang the unit → Finish!!!



PACi Water Heat Exchanger (WHE) is ideal solution for small retails and offices.

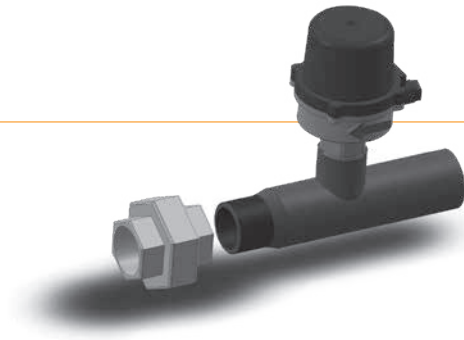
This is the first PACi connected WHE system.

The investment costs can be amortised in a short period.

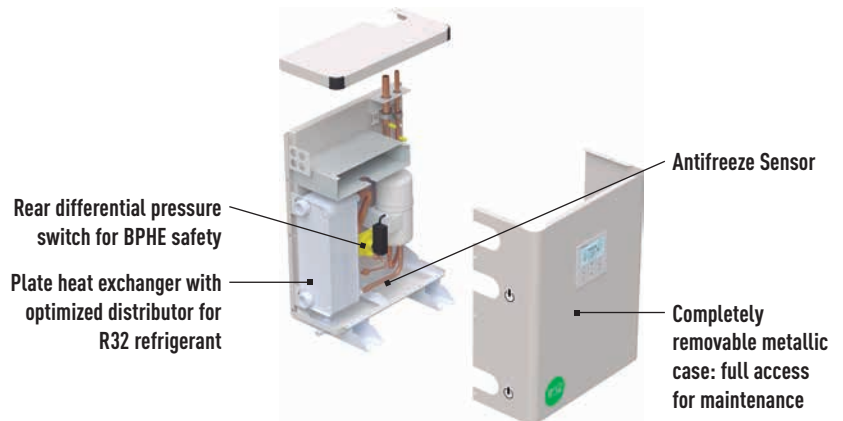
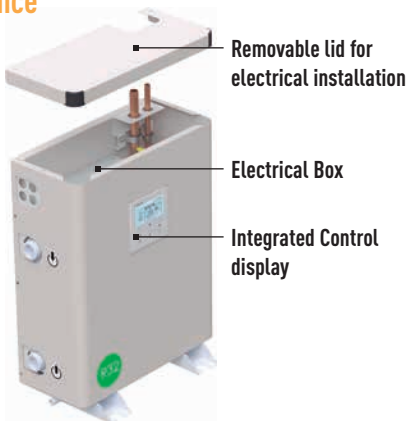
**PACi**

### Quick installation with pre-assembled flow switch

The flow switches come pre-assembled with pipe fittings for ease of installation.



### Easy maintenance operation from two points of access



### Application example

• Fulfilling R32 refrigerant needs to follow environmental perspective, Company policy

• Water solution to substitute existing boiler system  
• Hydraulic system to reduce total amount of HFC refrigeration



Foodchain.



Small office.

### PACi R32 Refrigerant Gas

Panasonic recommends R32 because it is comparably environmentally friendly. Compared to R22 and R410A, R32 has a very low potential impact on global warming. Panasonic is leading the switch to R32.



# New PACi with Water Heat Exchanger for chilled and hot water production • R32 GAS



NEW  
2019

PAW-200W5APAC  
PAW-250W5APAC



U-200PZH2E8  
U-250PZH2E8

Water Heat Exchanger			PAW-200W5APAC	PAW-250W5APAC
Cooling capacity <sup>1)</sup>		kW	20,00	25,00
EER <sup>1)</sup>		W/W	3,03	2,89
Heating capacity <sup>2)</sup>		kW	23,00	28,00
COP <sup>2)</sup>		W/W	2,98	2,95
$\eta_{sh}$ (LOT1) <sup>3)</sup>		%	171	161
<b>Energy efficiency class (Scale A+++ to D) <sup>4)</sup></b>			<b>A+++</b>	<b>A+++</b>
Dimension	H x W x D	mm	550 x 455 x 205	550 x 455 x 205
Net weight		kg	27	27
Water pipe connector		Inch	Male Thread 1 ¼	Male Thread 1 ¼
Cooling water flow ( $\Delta T=5$ K, 35°C)		m <sup>3</sup> /h	3,45	4,30
Heating water flow ( $\Delta T=5$ K, 35°C)		m <sup>3</sup> /h	4,15	4,85
Flow switch			Included	Included
Water filter			Included	Included
<b>Outdoor Unit</b>			<b>U-200PZH2E8</b>	<b>U-250PZH2E8</b>
Sound pressure	Cool / Heat (Hi)	dB(A)	59 / 61	59 / 63
Dimension	H x W x D	mm	1500 x 980 x 370	1500 x 980 x 370
Net weight		kg	117	128
Piping connections	Liquid pipe	Inch (mm)	3/8 (9,52)	1/2 (12,70)
	Gas pipe	Inch (mm)	1 (25,40)	1 (25,40)
Pipe length range		m	5 - 90	5 - 60
Elevation difference (in/out)		m	30	30
Pipe length for additional gas		m	30	30
Additional gas amount		g/m	60	80
Water outlet temperature range	Cool Min - Max	°C	+5 - +15	+5 - +15
	Heat Min - Max	°C	+35 - +50	+35 - +50
Operating range	Cool Min - Max	°C	-15 - +46	-15 - +46
	Heat Min - Max	°C	-20 - +24	-20 - +24

1) Data refers to 7°C leaving chilled water temperature and 35°C ambient air temperature, according to EN14511 standard. 2) Data refers to 45°C leaving warm water temperature and 7°C ambient air temperature according to EN14511 standard. 3) Following COMMISSION REGULATION (EU) No 813/2013 for low-temperature heat pumps. 4) Following COMMISSION REGULATION (EU) No 811/2013 for low-temperature heat pumps. Scale from A+++ to D.



Refrigerant gas R32. Our heat pumps containing the refrigerant R32 show a drastic reduction in the value of Global Warming Potential (GWP). — Better efficiency & Value for low temperature applications. Energy efficiency class A+++ in a scale from A+++ to D. — Down to -20°C in cooling mode. System works in heating mode at outdoor temperature down to -20°C. — Up to 46°C in cooling mode. System works in cooling mode at outdoor temperature up to 46°C. — A touch screen remote controller is included as a standard. Clean design. Easy operation and quick access to all menus. — 5 Years compressor warranty.

## Panasonic®

To find out how Panasonic cares for you, log on to: [www.aircon.panasonic.eu](http://www.aircon.panasonic.eu)

Panasonic Marketing Europe GmbH  
Panasonic Air Conditioning  
Hagenauer Strasse 43, 65203 Wiesbaden, Germany

heating & cooling solutions