

HVRF PLFY-WL-VEM-E

4-Way Blow Ceiling Cassette Indoor Unit

CITY MULTI

The new **PLFY-WL-VEM-E** offers 72 different airflow patterns, with the ability to handle a multitude of ceiling applications up to 4.2 metres in height. The easy to install, slim unit is ideal for maintaining constant temperatures, thanks to adjustable vanes that allow users to precisely direct air where it's needed.



Key Features & Benefits:

- Improved airflow control, including horizontal airflow for greater comfort (compared to the previous VBM model)
- Optional 3D i-see sensor grille (PLP-6EAE) provides customised comfort by automatically monitoring room occupancy, position and body temperatures
- Optional filter lowering operation down to 4m (PLP-6EAJ)



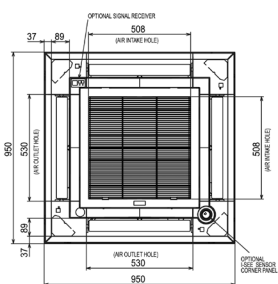


INDOOR UNITS		PLFY-WL32VEM-E	PLFY-WL40VEM-E	PLFY-WL50VEM-E	PLFY-WL63VEM-E	PLFY-WL80VEM-E
CAPACITY (kW)	Heating (nominal)	4.0	5.0	6.3	8.0	10
	Cooling (nominal)	3.6	4.5	5.6	7.1	9
	UK Heating	4.0	5.0	6.3	8.0	8.0
	UK Total Cooling - Hi (Sensible)	3.20 (3.20)	4.00 (3.60)	5.00 (4.20)	6.4 (5.0)	8.1 (6.1)
	UK Total Cooling - Mi2	3.16	3.95	4.87	6.26	7.94
	UK Total Cooling - Mi1	3.09	3.87	4.66	6.02	7.53
	UK Total Cooling - Lo	3.02	3.77	4.39	5.73	6.95
POWER INPUT (kW)	Heating (nominal)	0.03	0.03	0.04	0.04	0.05
	Cooling (nominal)	0.03	0.03	0.04	0.05	0.05
AIRFLOW (l/s)	Lo-Mi1-Mi2-Hi	233-250-267-283	233-250-267-283	233-267-300-333	250-283-317-350	250-300-350-383
SOUND PRESSURE LEVEL (dBA)	Lo-Mi1-Mi2-Hi	26-27-29-30	26-28-29-31	27-29-31-33	27-29-31-33	27-30-33-35
WEIGHT (kg)		20	20	20	23	23
DIMENSIONS (mm)	Width (Grille)	840 (950)	840 (950)	840 (950)	840 (950)	840 (950)
	Depth (Grille)	840 (950)	840 (950)	840 (950)	840 (950)	840 (950)
	Height (Grille)	258 (40)	258 (40)	258 (40)	298 (40)	298 (40)
ELECTRICAL SUPPLY		220-240v, 50Hz	220-240v, 50Hz	220-240v, 50Hz	220-240v, 50/60Hz	220-240v, 50/60Hz
PHASE		Single	Single	Single	Single	Single
RUNNING CURRENT (A)	Heating / Cooling	0.27 / 0.33	0.29 / 0.35	0.34 / 0.40	0.34 / 0.40	0.40 / 0.46
FUSE RATING (BS88) - HRC (A)		6	6	6	6	6
MAINS CABLE No. Cores		3	3	3	3	3
GRILLE MODEL REFERENCE		PLP-6EA	PLP-6EA	PLP-6EA	PLP-6EA	PLP-6EA
WATER PIPE CONNECTION		22 mm (0.0)	22 mm (0.0)	22 mm (0.0)	22 mm (0.0)	22 mm (0.0)

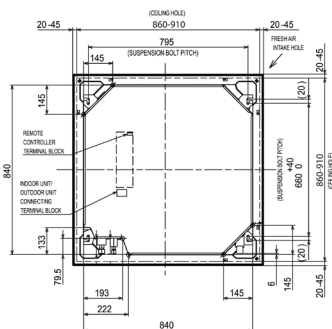
Notes: HVRF indoor units can only be configured with the CMB-WM HBC (HVRF) and PURY-(EIM YNW-A1 or PQRY-P YLM-A1 outdoor units.

PLFY-WL32/40/50/63/80VEM-E DIMENSIONS

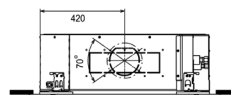
LOWER VIEW



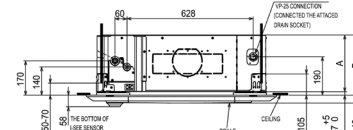
UPPER VIEW



FRONT VIEW



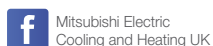
SIDE VIEW



	A	
32/40	241	25
50		
63	281	25
80-125		



Telephone: **01707 282880**
email: **air.conditioning@meuk.mee.com**
les.mitsubishielectric.co.uk



UNITED KINGDOM Mitsubishi Electric Europe Living Environment Systems Division, Travellers Lane, Hatfield, Hertfordshire, AL10 8XB, England. Telephone: 01707 282880 Fax: 01707 278881
IRELAND Mitsubishi Electric Europe, Westgate Business Park, Ballymount, Dublin 24, Ireland. Telephone: (01) 419 8800 Fax: (01) 419 8890 International code: (003531)

Country of origin: United Kingdom - Japan - Thailand - Malaysia. ©Mitsubishi Electric Europe 2021. Mitsubishi and Mitsubishi Electric are trademarks of Mitsubishi Electric Europe B.V. The company reserves the right to make any variation in the model specifications to the equipment described, or to withdraw or replace the product without prior notification or public announcement. Mitsubishi Electric is constantly developing and improving its products. All descriptions, illustrations, drawings and specifications in this publication are for general guidance only and do not constitute a contract. All goods are supplied subject to the Company's General Conditions of Sale, a copy of which is available on request. Third-party product and brand names may be trademarks or registered trademarks of their respective owners.

Note: The fuse rating is for guidance only. Please refer to this relevant databook for detailed specification. It is the responsibility of a qualified electrical/electrical engineer to select the correct cable size and fuse rating based on current regulation and site specific conditions. Mitsubishi Electric's conditioning equipment and heat pump systems contain a fluorinated greenhouse gas, R410A (GWP:2088), R32 (GWP:675), R407C (GWP:1774), R134a (GWP:1430), R513a (GWP:631), R454B (GWP:466), R1234ze (GWP:7) or R1234yf (GWP:4). *These GWP values are based on Regulation (EU) No 517/2014 from IPCC 4th edition. In case of Regulation (EU) No 626/2011 from IPCC 3rd edition, these are as follows. R410A (GWP:1975), R32 (GWP:550), R407C (GWP:1650) or R134a (GWP:1300).

Effective as of May 2021

