

Heating

Product Information

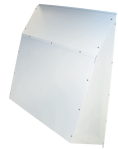
CAHV-P500YA-HPB Accessories

Making a
World of
Difference



CAHV Wind Hood

CAHV-WH



- Protects the evaporating coil in high wind environments.
- Allows the unit to be installed in exposed roof top locations.
- Protects the unit in locations where there is a risk of snow build up.
- Four hoods supplied, two side and two rear.

CAHV Raised Stand

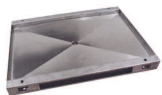
CAHV-RS



- Gives the unit a solid platform to mount and anchor to.
- Raises the unit up and allows the natural flow of cold air beneath it.
- Fully adjustable in height, allowing the installer to choose ideal height for the location.
- Should be installed with anti-vibration pads between the unit and the raised stand.

CAHV Drain Pan and Heater

CAHV-DP



- Neatly directs condensate (naturally occurring water moisture) to a drain away.
- Supplied with optional use resistance heater - the heater can be used where there is risk of freezing due to prolonged cold weather.
- Wired directly into the unit and only activated when the ambient temperature drops below a given point.
- Requires a 240v, 10amp power supply - see installation manual for details.
- Should be installed with anti-vibration pads between the unit and the raised stand.
- Must be purchased with the raised stand.

CAHV Main Pipework Thermistor

TW-TH16



- Pipework mountable probe thermistor - either dry or wet pocket.
- For use in multiple CAHV installations where cascade ability is required.
- Should be installed on the flow/outlet pipework, no more than 20m from the main unit.



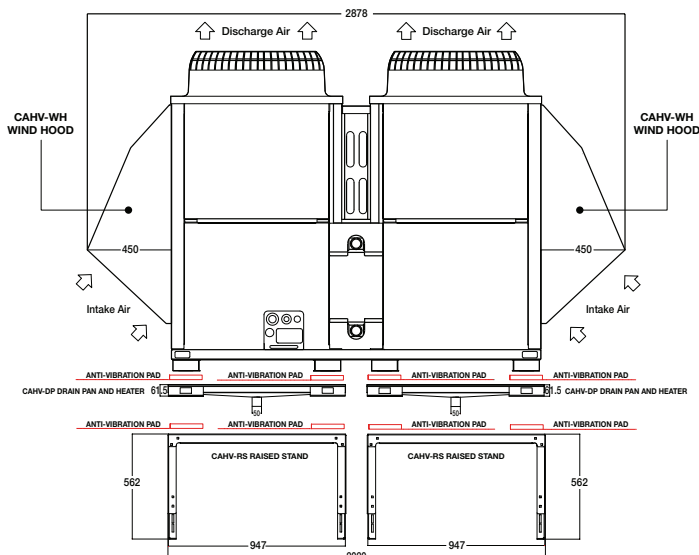
Air Conditioning | Heating
Ventilation | Controls



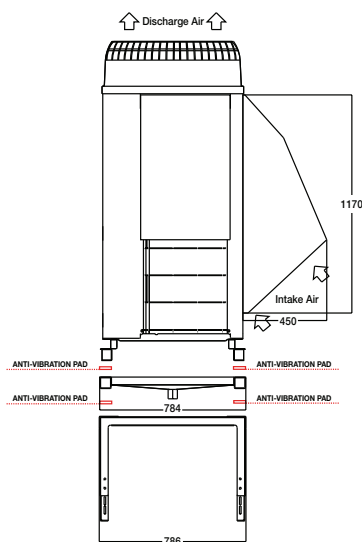
ecodan[®]
Renewable Heating Technology

Schematics

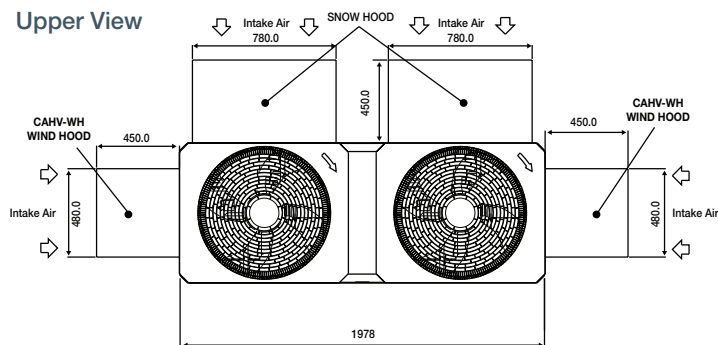
Front View



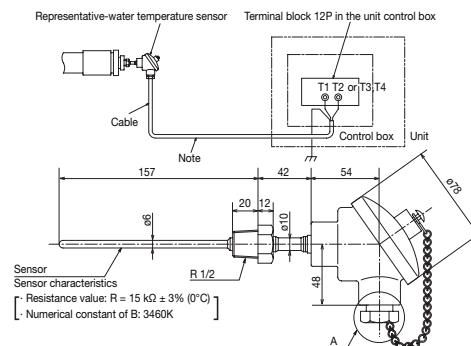
Side View



Upper View



Thermistor Schematic



| Weight | |
|-------------------------------|---------|
| CAHV Wind Hood | 52.6 kg |
| CAHV Raised Stand | 28 kg |
| CAHV Drain Pan and Heater | 17 kg |
| CAHV Main Pipework Thermistor | 10 kg |

| Power Requirement | |
|---------------------------|--------------|
| CAHV Drain Pan and Heater | 240v, 10amps |



Telephone: 01707 282880
 email: heating@meuk.mee.com web: www.heating.mitsubishielectric.co.uk

UNITED KINGDOM Mitsubishi Electric Europe Living Environmental Systems Division
 Travellers Lane, Hatfield, Hertfordshire, AL10 8XB, England General Enquiries Telephone: 01707 282880 Fax: 01707 278881
 IRELAND Mitsubishi Electric Europe Westgate Business Park, Ballymount, Dublin 24, Ireland
 Telephone: Dublin (01) 419 8800 Fax: Dublin (01) 419 8890 International code: (003531)

Country of origin: United Kingdom – Japan – Thailand – Malaysia. ©Mitsubishi Electric Europe 2012. Mitsubishi and Mitsubishi Electric are trademarks of Mitsubishi Electric Europe B.V. The company reserves the right to make any variation in technical specification to the equipment described, or to withdraw or replace products without prior notification or public announcement. Mitsubishi Electric is constantly developing and improving its products. All descriptions, illustrations, drawings and specifications in this publication present only general particulars and shall not form part of any contract. All goods are supplied subject to the Company's General Conditions of Sale, a copy of which is available on request. Third-party product and brand names may be trademarks or registered trademarks of their respective owners.



www.greengateway.mitsubishielectric.co.uk

Mitsubishi Electric's commitment to the environment

Follow us @green_gateway

Connect with Green Gateway

mitsubishielectric2