

# Packaged Air-Conditioners INDOOR UNIT



## SEZ-M25,M35,M50,M60,M71DAL

### INSTALLATION MANUAL

**FOR INSTALLER**

For safe and correct use, please read this installation manual thoroughly before installing the air-conditioner unit.

**English**

### INSTALLATIONSHANDBUCH

**FÜR INSTALLATEURE**

Zum sicheren und ordnungsgemäßen Gebrauch der Klimaanlage das Installationshandbuch gründlich durchlesen.

**Deutsch**

### MANUEL D'INSTALLATION

**POUR L'INSTALLATEUR**

Veuillez lire le manuel d'installation en entier avant d'installer ce climatiseur pour éviter tout accident et vous assurer d'une utilisation correcte.

**Français**

### MANUAL DE INSTALACIÓN

**PARA EL INSTALADOR**

Para un uso seguro y correcto, lea detalladamente este manual de instalación antes de montar la unidad de aire acondicionado.

**Español**

### MANUALE DI INSTALLAZIONE

**PER L'INSTALLATORE**

Per un uso sicuro e corretto, leggere attentamente questo manuale di installazione prima di installare il condizionatore d'aria.

**Italiano**

### INSTALLATIEHANDLEIDING

**VOOR DE INSTALLATEUR**

Voor een veilig en juist gebruik moet u deze installatiehandleiding grondig doorlezen voordat u de airconditioner installeert.

**Nederlands**

### INSTALLATIONSMANUAL

**FÖR INSTALLATÖREN**

Läs denna installationsmanual noga för säkert och korrekt bruk innan luftkonditioneringen installeras.

**Svenska**

### INSTALLATIONSMANUAL

**TIL INSTALLATØREN**

Læs venligst denne installationsmanual grundigt, før De installerer aircondition anlægget, af hensyn til sikker og korrekt anvendelse.

**Dansk**

### MANUAL DE INSTALAÇÃO

**PARA O INSTALADOR**

Para segurança e utilização correctas, leia atentamente este manual de instalação antes de instalar a unidade de ar condicionado.

**Português**

### ΕΓΧΕΙΡΙΔΙΟ ΟΔΗΓΙΩΝ ΕΓΚΑΤΑΣΤΑΣΗΣ

**ΓΙΑ ΑΥΤΟΝ ΠΟΥ ΚΑΝΕΙ ΤΗΝ ΕΓΚΑΤΑΣΤΑΣΗ**

Για ασφάλεια και σωστή χρήση, παρακαλείστε διαβάστε προσεχτικά αυτό το εγχειρίδιο εγκατάστασης πριν αρχίσετε την εγκατάσταση της μονάδας κλιματισμού.

**Ελληνικά**

### MONTAJ ELKİTABI

**MONTÖR İÇİN**

Emniyetli ve doğru biçimde nasıl kullanılacağını öğrenmek için lütfen klima cihazını monte etmeden önce bu elkitabını dikkatle okuyunuz.

**Türkçe**

### PODRECZNIK INSTALACJI

**DLA INSTALATORA**

W celu bezpiecznego i poprawnego korzystania należy przed zainstalowaniem klimatyzatora dokładnie zapoznać się z niniejszym podręcznikiem instalacji.

**Polski**

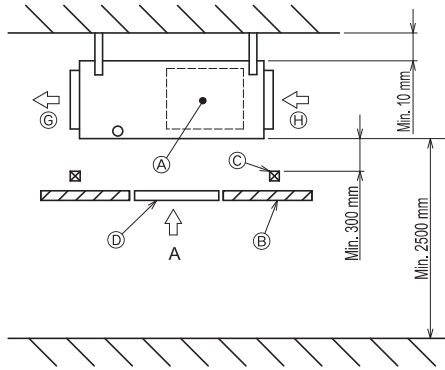
### INSTALLASJONSHÅNDBOK

**FOR INSTALLATØREN**

For sikker og riktig bruk, skal du lese denne installasjonshåndboken nøye før du installerer klimaanlegget.

**Norsk**

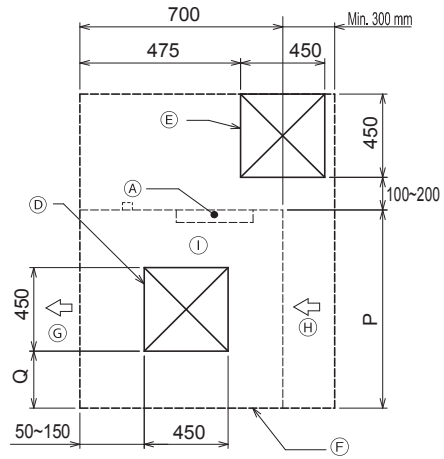
[Fig. 3-1-1]



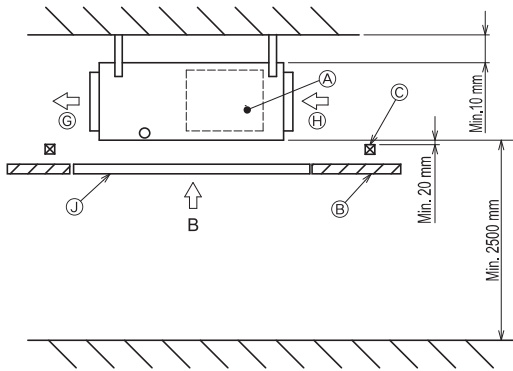
[Fig. 3-1-2]

(Viewed from the direction of the arrow A)

(Unit: mm)

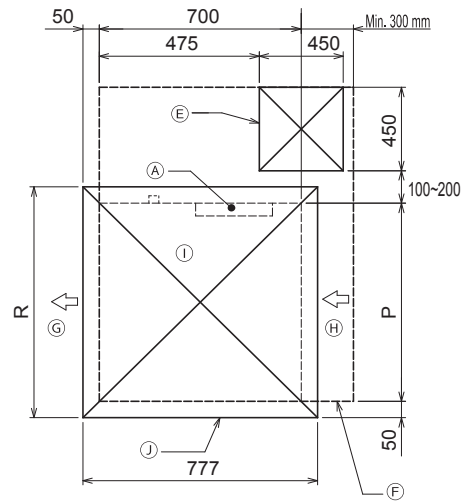


[Fig. 3-1-3]



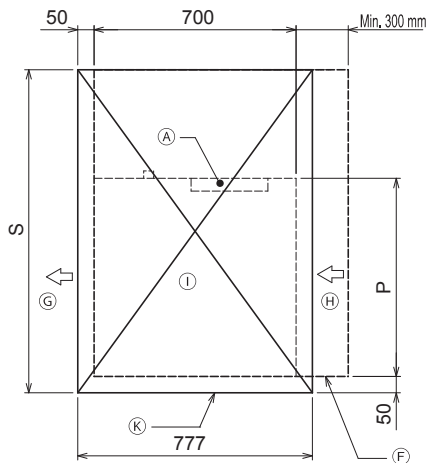
[Fig. 3-1-4]

(Viewed from the direction of the arrow B)



[Fig. 3-1-5]

(Viewed from the direction of the arrow B)



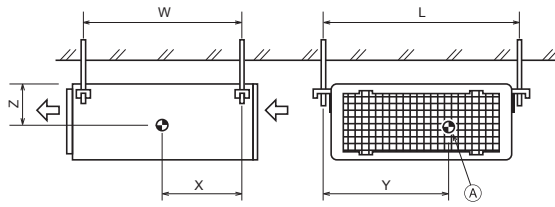
- (A) Electric box
- (B) Ceiling
- (C) Ceiling beam
- (D) Access door 2 (450 mm x 450 mm)
- (E) Access door 1 (450 mm x 450 mm)
- (F) Maintenance access space
- (G) Supply air
- (H) Intake air
- (I) Bottom of indoor unit
- (J) Access door 3
- (K) Access door 4

(mm)

Model	P	Q	R	S
SEZ-M25	700	50~150	800	1300
SEZ-M35, 50	900	150~250	1000	1500
SEZ-M60, 71	1100	250~350	1200	1700

4

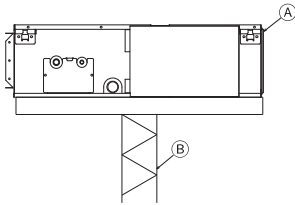
[Fig. 4-1]



5

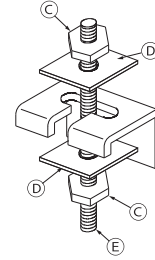
5.1

[Fig. 5-1]



- $\textcircled{A}$  Unit body
- $\textcircled{B}$  Lifting machine

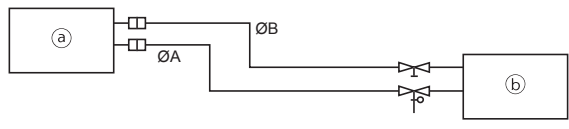
[Fig. 5-2]



- $\textcircled{C}$  Nuts (field supply)
- $\textcircled{D}$  Washers (accessory)
- $\textcircled{E}$  M10 hanging bolt (field supply)

6.1

[Fig. 6-1]

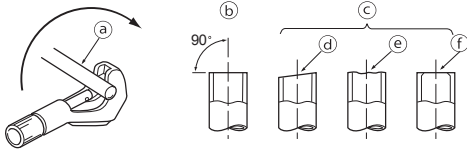


a Indoor unit  
b Outdoor unit

Model	A	B
SEZ-M25, 35	9.52	6.35
SEZ-M50	12.7	6.35
SEZ-M60	15.88	6.35
SEZ-M71	15.88	9.52

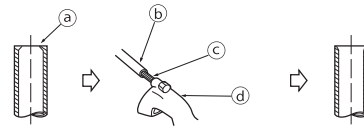
6.2

[Fig. 6-3]



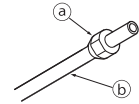
a Copper tubes  
b Good  
c No good  
d Tilted  
e Uneven  
f Burred

[Fig. 6-4]



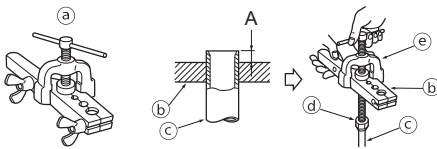
a Burr  
b Copper tube/pipe  
c Spare reamer  
d Pipe cutter

[Fig. 6-5]



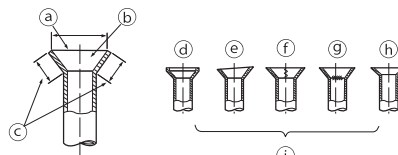
a Flare nut  
b Copper tube

[Fig. 6-6]



a Flaring tool  
b Die  
c Copper tube  
d Flare nut  
e Yoke

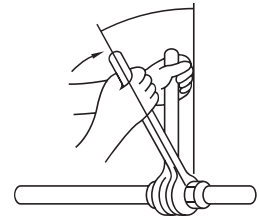
[Fig. 6-7]



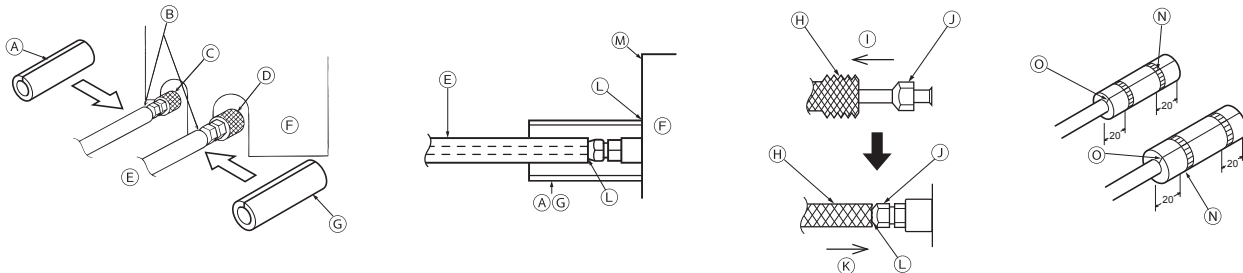
a Smooth all around  
b Inside is shining without any scratches  
c Even length all around  
d Too much  
e Tilted  
f Scratch on flared plane  
g Cracked  
h Uneven  
i Bad examples

6.3

[Fig. 6-8]



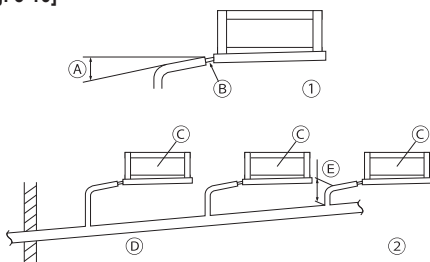
[Fig. 6-9]



A Pipe cover (small) (accessory)  
B Caution:  
Pull out the thermal insulation on the refrigerant piping at the site, insert the flare nut to the end, and replace the insulation in its original position.  
Take care to ensure that condensation does not form on exposed copper piping.  
C Liquid end of refrigerant piping  
D Gas end of refrigerant piping  
E Site refrigerant piping  
F Main body  
G Pipe cover (large) (accessory)  
H Thermal insulation (field supply)  
I Pull  
J Flare nut  
K Return to original position  
L Ensure that there is no gap here  
M Plate on main body  
N Band (accessory)  
O Ensure that there is no gap here. Place joint upwards.

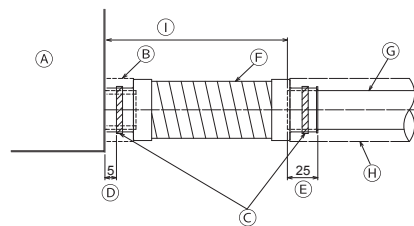
6.5

[Fig. 6-10]



A Downward slope 1/100 or more  
B Connection dia. R1 external thread  
C Indoor unit  
D Collective piping  
E Maximize this length to approx. 10 cm

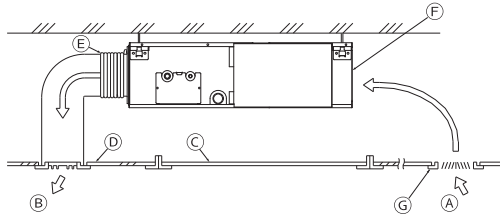
[Fig. 6-11]



A Indoor unit  
B Pipe cover (short) (accessory)  
C Tie band (accessory)  
D Band fixing part  
E Insertion margin  
F Drain hose (accessory)  
G Drain pipe (O.D. ø32 PVC TUBE, field supply)  
H Insulating material (field supply)  
I Max. 145 ± 5 mm

7

[Fig. 7-1]

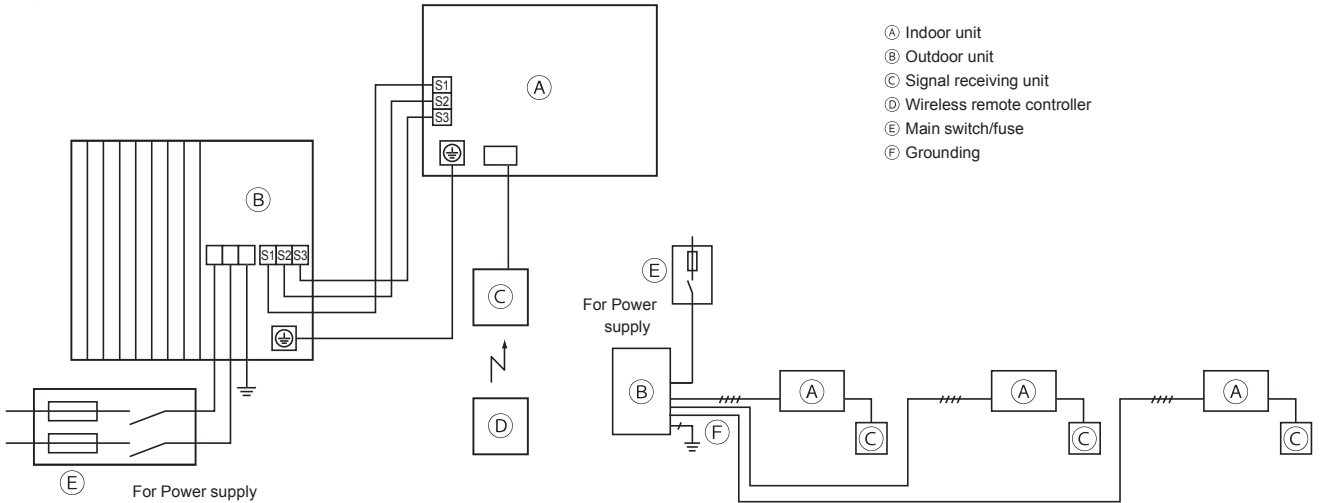


- Ⓐ Air inlet
- Ⓑ Air outlet
- Ⓒ Access door
- Ⓓ Ceiling surface
- Ⓔ Canvas duct
- Ⓕ Air filter
- Ⓖ Inlet grille

8

8.1

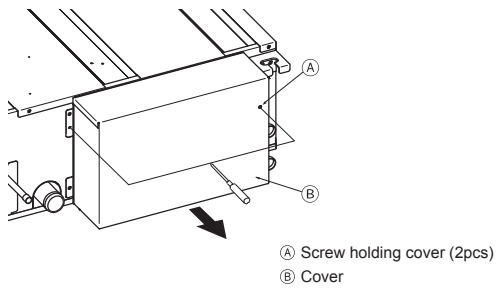
[Fig. 8-1]



- Ⓐ Indoor unit
- Ⓑ Outdoor unit
- Ⓒ Signal receiving unit
- Ⓓ Wireless remote controller
- Ⓔ Main switch/fuse
- Ⓕ Grounding

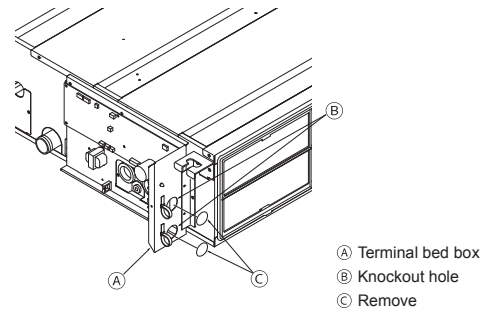
8.2

[Fig. 8-2-1]



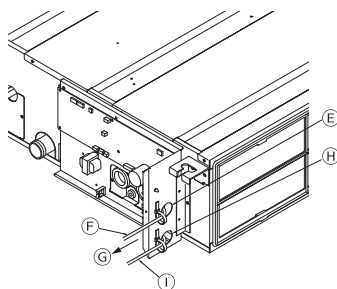
- Ⓐ Screw holding cover (2pcs)
- Ⓑ Cover

[Fig. 8-2-2]



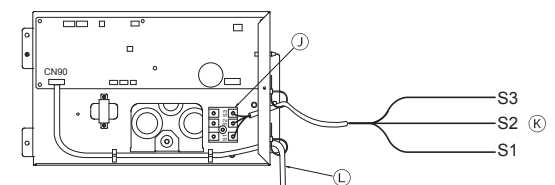
- Ⓐ Terminal bed box
- Ⓑ Knockout hole
- Ⓒ Remove

[Fig. 8-2-3]



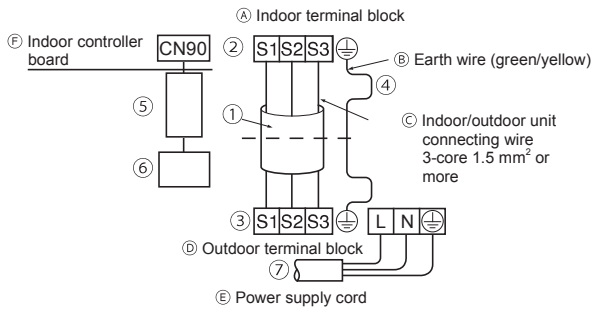
- Ⓔ Use PG bushing to keep the weight of the cable and external force from being applied to the power supply terminal connector. Use a cable tie to secure the cable.
- Ⓕ Indoor/outdoor unit connecting wire
- Ⓖ Tensile force
- Ⓗ Use ordinary bushing
- Ⓘ Signal receiving unit wiring

[Fig. 8-2-4]



- Ⓙ Terminal bed for power source and indoor transmission
  - Ⓚ Indoor/outdoor unit connecting wire
  - Ⓛ Connecting the signal receiving unit
- Connect the signal receiving unit to the CN90 (Connect to the wireless remote controller board) on the indoor unit using the supplied remote controller wire. Connect the signal receiving units to all the indoor units.

[Fig. 8-3]

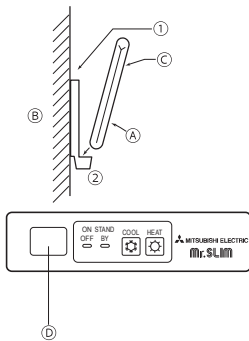


- ① Indoor terminal block
- ② Earth wire (green/yellow)
- ③ Indoor/outdoor unit connecting wire 3-core 1.5 mm<sup>2</sup> or more
- ④ Outdoor terminal block
- ⑤ Power supply cord
- ⑥ Indoor controller board
- ⑦ Connecting cable  
Cable 3-core 1.5 mm<sup>2</sup>, in conformity with Design 245 IEC 57.

- ③ Outdoor terminal block
- ④ Always install an earth wire (1-core 1.5 mm<sup>2</sup>) longer than other cables
- ⑤ Signal receiving unit cable (accessory) (wire length : 5 m)
- ⑥ Signal receiving unit
- ⑦ Power supply cord

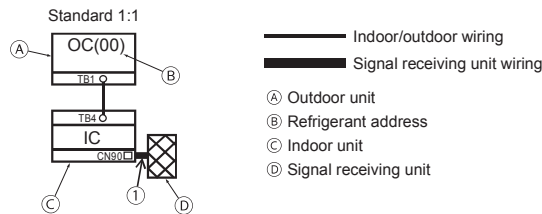
8.3

[Fig. 8-4]

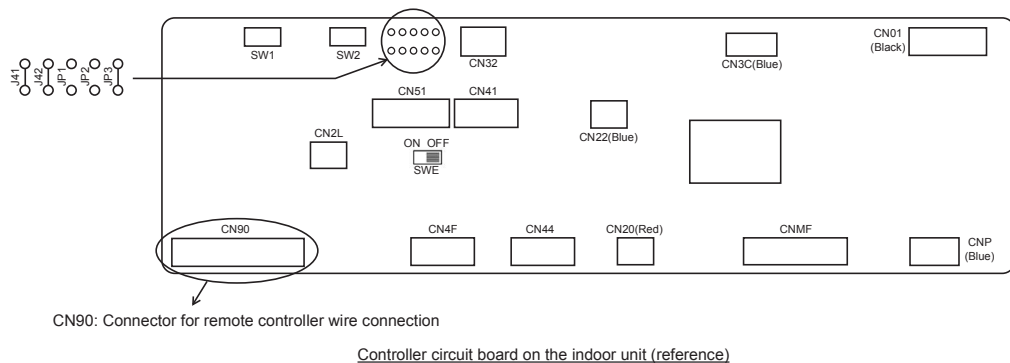


- ① Attach the remote controller holder to the desired location using two tapping screws.
- ② Place the lower end of the controller into the holder.
- A Remote controller
- B Wall
- C Display panel
- D Receiver
- The signal can travel up to approximately 7 meters (in a straight line) within 45 degrees to both right and left of the center line of the receiver.

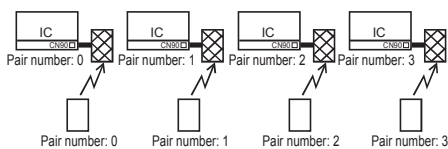
[Fig. 8-5]



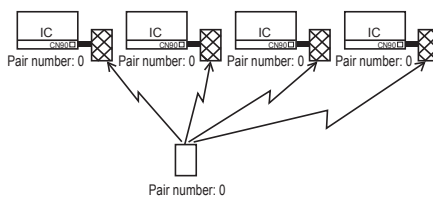
[Fig. 8-6]



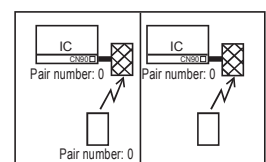
[Fig. 8-7]



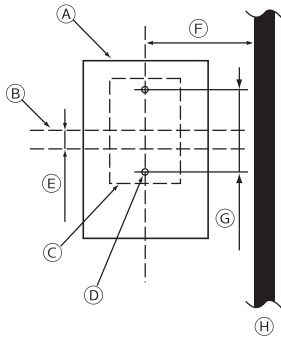
[Fig. 8-8]



[Fig. 8-9]



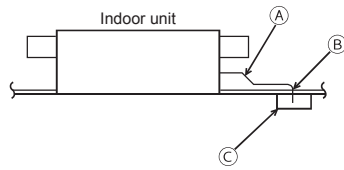
[Fig. 8-10]



- (A) Signal receiving unit external
- (B) Center of Switch box
- (C) Switch box
- (D) Installation pitch
- (E) 6.5 mm (1/4 inch)
- (F) 70 mm (2 - 3/4 inch)
- (G) 83.5 ± 0.4 mm (3 - 9/32 inch)
- (H) Protrusion (pillar, etc)

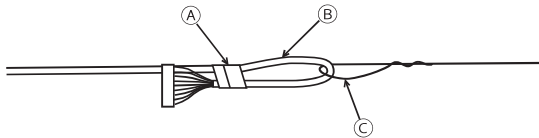
[Fig. 8-11]

Ceiling cassette type, Ceiling concealed type



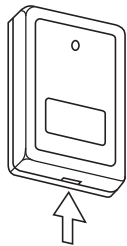
- (A) Remote controller wire
- (B) Hole (drill a hole on the ceiling to pass the remote controller wire.)
- (C) Signal Receiving Unit

[Fig. 8-12]

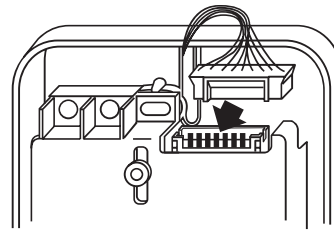


- (A) Fix tightly with tape.
- (B) Remote controller wire
- (C) Order wire

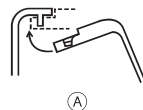
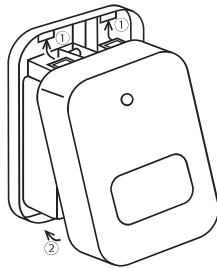
[Fig. 8-13]



(A) Insert the minus screwdriver toward the arrow pointed and wrench it to remove the cover.  
A flat screwdriver whose width of blade is between 4 and 7 mm (5/32 - 9/32 inch) must be used.



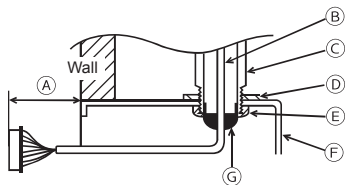
[Fig. 8-14]



- ① Hang the cover to the upper hooks (2 places).
- ② Mount the cover to the lower case
- (A) Cross-section of upper hooks

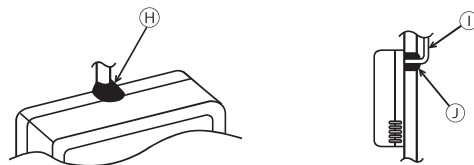
[Fig. 8-15]

When using the switch box



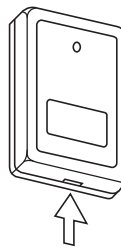
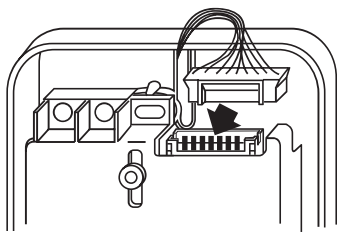
- (A) 150 mm (5 - 15/16 inch)
- (B) Remote controller wire (Accessory)
- (C) Wiring pipe
- (D) Locknut
- (E) Bushing
- (F) Switch box
- (G) Seal around here with putty

When installing directly on the wall



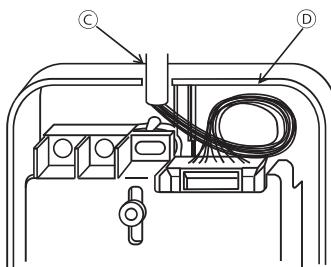
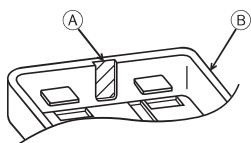
- (H) Seal around here with putty
- (I) Remote controller wire
- (J) Seal around here with putty

[Fig. 8-16]



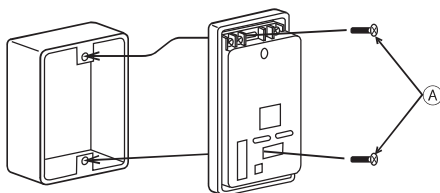
Ⓐ Insert the minus screwdriver toward the arrow pointed and wrench it to remove the cover.  
A flat screwdriver whose width of blade is between 4 and 7 mm (5/32 - 9/32 inch) must be used.

[Fig. 8-17]



Ⓐ Thin-wall portion  
Ⓑ Bottom case  
Ⓒ Remote controller wire  
Ⓓ Conducting wire

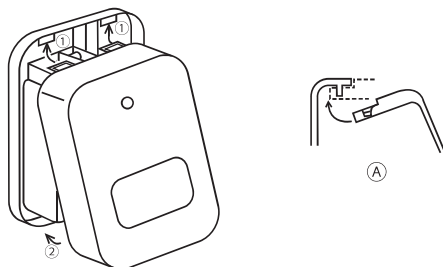
[Fig. 8-18]



Ⓐ Screw (M4 × 30)

\* When installing the lower case directly on the wall or the ceiling, use wood screws.

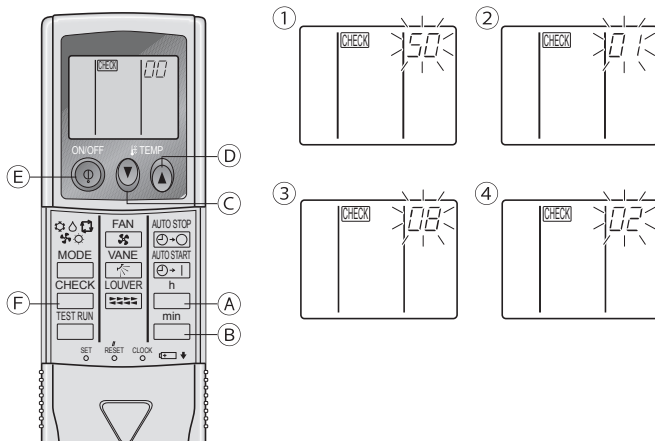
[Fig. 8-19]



① Hang the cover to the upper hooks (2 places).  
② Mount the cover to the lower case  
Ⓐ Cross-section of upper hooks

8.4

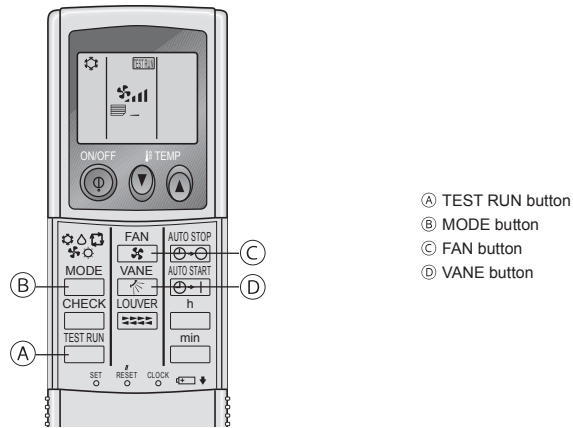
[Fig. 8-20]



Ⓐ Hour button  
Ⓑ Minute button  
Ⓒ TEMP button  
Ⓓ TEMP button  
Ⓔ ON/OFF button  
Ⓕ CHECK button

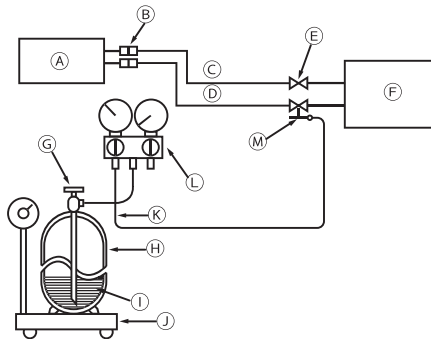


[Fig. 9-1]



- Ⓐ TEST RUN button
- Ⓑ MODE button
- Ⓒ FAN button
- Ⓓ VANE button

[Fig. 10-1]



- Ⓐ Indoor unit
- Ⓑ Union
- Ⓒ Liquid pipe
- Ⓓ Gas pipe
- Ⓔ Stop valve
- Ⓕ Outdoor unit
- Ⓖ Refrigerant gas cylinder operating valve
- Ⓗ Refrigerant gas cylinder for R32/R410A with siphon
- ① Refrigerant (liquid)
- ② Electronic scale for refrigerant charging
- ③ Charge hose (for R32/R410A)
- Ⓛ Gauge manifold valve (for R32/R410A)
- Ⓜ Service port

# Contents





1. Safety precautions.....	10	9. Test run.....	18
2. Selecting the installation location.....	12	10. Maintenance.....	20
3. Selecting an installation site & Accessories.....	12		
4. Fixing hanging bolts.....	13		
5. Installing the unit.....	13		
6. Refrigerant piping work.....	14		
7. Duct work.....	15		
8. Electrical work.....	16		

This Installation Manual describes only for the indoor unit and the connected outdoor unit of SUZ series.  
If the connected outdoor unit is MXZ series, refer to the Installation Manual for MXZ series.

## 1. Safety precautions







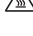
- ▶ Before installing the unit, make sure you read all the “Safety Precautions”.
- ▶ The “Safety Precautions” provide very important points regarding safety. Make sure you follow them.
- ▶ Please report to or take consent by the supply authority before connection to the system.

### MEANINGS OF SYMBOLS ON THE UNIT

	WARNING (Risk of fire)	This symbol is only for R32 refrigerant. The type of the refrigerant used is written on the nameplate on the outdoor unit. R32 refrigerant is flammable. If the refrigerant leaks, or comes in contact with fire or parts that generate heat, it may create harmful gas and pose a risk of fire.
		Read the OPERATION MANUAL carefully before operation.
		Service personnel are required to carefully read the OPERATION MANUAL and INSTALLATION MANUAL before operation.
		Further information is available in the OPERATION MANUAL, INSTALLATION MANUAL, and the like.

- Please report to or take consent by the supply authority before connection to the system.
  - Be sure to read “Safety precautions” before installing the air conditioner.
  - Be sure to observe the cautions specified here as they include important items related to safety.
  - The indications and meanings are as follows.
- ⚠ Warning:**  
Could lead to death, serious injury, etc.
- ⚠ Caution:**  
Could lead to serious injury in particular environments when operated incorrectly.
- After reading this manual, be sure to keep it together with the instruction manual in a handy place on the customer’s site.

### Symbols put on the unit

-  : Indicates an action that must be avoided.
-  : Indicates that important instructions must be followed.
-  : Indicates a part which must be grounded.
-  : Indicates that caution should be taken with rotating parts.
-  : Indicates that the main switch must be turned off before servicing.
-  : Beware of electric shock.
-  : Beware of hot surface.

**⚠ Warning:**  
Carefully read the labels affixed to the main unit.

- ⚠ Warning:**
- Do not use refrigerant other than the type indicated in the manuals provided with the unit and on the nameplate.
    - Doing so may cause the unit or pipes to burst, or result in explosion or fire during use, during repair, or at the time of disposal of the unit.
    - It may also be in violation of applicable laws.
    - MITSUBISHI ELECTRIC CORPORATION cannot be held responsible for malfunctions or accidents resulting from the use of the wrong type of refrigerant.
  - When handling this product, always wear protective equipment.  
EG: Gloves, full arm protection namely boiler suit, and safety glasses.
    - Improper handling may result in injury.
  - Do not install it by yourself (customer).  
Incomplete installation could cause injury due to fire, electric shock, the unit falling or leakage of water. Consult the dealer from whom you purchased the unit or special installer.
  - Install the unit securely in a place which can bear the weight of the unit. When installed in an insufficient strong place, the unit could fall causing injured.
  - Use the specified wires to connect the indoor and outdoor units securely and attach the wires firmly to the terminal board connecting sections so the stress of the wires is not applied to the sections.  
Incomplete connecting and fixing could cause fire.
  - Do not use intermediate connection of the power cord or the extension cord and do not connect many devices to one AC outlet.  
It could cause a fire or an electric shock due to defective contact, defective insulation, exceeding the permissible current, etc.
  - Check that the refrigerant gas does not leak after installation has completed.
  - Perform the installation securely referring to the installation manual.  
Incomplete installation could cause a personal injury due to fire, electric shock, the unit falling or leakage of water.
  - Perform electrical work according to the installation manual and be sure to use an exclusive circuit.  
If the capacity of the power circuit is insufficient or there is incomplete electrical work, it could result in a fire or an electric shock.

- Attach the electrical part cover to the indoor unit and the service panel to the outdoor unit securely.  
If the electrical part cover in the indoor unit and/or the service panel in the outdoor unit are not attached securely, it could result in a fire or an electric shock due to dust, water, etc.
- Be sure to use the part provided or specified parts for the installation work. The use of defective parts could cause an injury or leakage of water due to a fire, an electric shock, the unit falling, etc.
- Ventilate the room if refrigerant leaks during operation.  
If the refrigerant comes in contact with a flame, poisonous gases will be released.
- If the supply cord is damaged, it must be replaced by the manufacturer, its service agent or similarly qualified persons in order to avoid a hazard.
- This appliance is not intended for use by persons (including children) with reduced physical, sensory or mental capabilities, or lack of experience and knowledge, unless they have been given supervision or instruction concerning use of the appliance by a person responsible for their safety.
- Children should be supervised to ensure that they do not play with the appliance.
- The installer and system specialist shall secure safety against leakage according to local regulation or standards.
  - The instructions in this manual may be applicable if local regulation are not available.
- Pay a special attention to the place, such as a basement, etc. where refrigeration gas can stay, since refrigeration is heavier than the air.
- This appliance is intended to be used by expert or trained users in shops, in light industry and on farms, or for commercial use by lay persons.
- When installing, relocating, or servicing the air conditioner, use only the specified refrigerant written on the outdoor unit to charge the refrigerant lines. Do not mix the refrigerant with any other refrigerant, and do not allow air to remain in the lines.
  - If air is mixed with the refrigerant, then it may cause abnormal high pressure in the refrigerant lines, resulting in an explosion and other hazards.
  - The use of any refrigerant other than that specified for the system will cause mechanical failure, system malfunction, or unit breakdown. In the worst case, this could lead to a serious impediment to securing product safety.
  - It may also be in violation of applicable laws.
  - MITSUBISHI ELECTRIC CORPORATION cannot be held responsible for malfunctions or accidents resulting from the use of the wrong type of refrigerant.

# 1. Safety precautions

---

- This indoor unit should be installed in a room which is equal to or larger than the floor space specified in the outdoor unit installation manual. Refer to the outdoor unit installation manual.
  - Only use means recommended by the manufacturer to accelerate the defrosting process or to clean.
  - This indoor unit shall be stored in a room that has no continuously-operating ignition device such as open flame, gas appliance, or electrical heater.
  - Do not pierce a hole in or burn this indoor unit or refrigerant lines.
  - Be aware that the refrigerant may be odour-free.
  - Pipe-work shall be protected from physical damage.
  - The installation of pipe-work shall be kept to a minimum.
  - Compliance with national gas regulations shall be observed.
  - Keep any required ventilation openings clear of obstruction.
  - Do not use low temperature solder alloy when brazing the refrigerant pipes.
  - When performing brazing work, be sure to ventilate the room sufficiently. Make sure that there are no hazardous or flammable materials nearby. When performing the work in a closed room, small room, or similar location, make sure that there are no refrigerant leaks before performing the work. If refrigerant leaks and accumulates, it may ignite or poisonous gases may be released.
  - For installation and relocation work, follow the instructions in the installation manual and use tools and pipe components specifically made for using with refrigerant specified in the outdoor unit installation manual.
- 

## Caution:

- Perform grounding.  
Do not connect the ground wire to a gas pipe, water pipe arrester or telephone ground wire. Defective grounding could cause an electric shock.
- Do not install the unit in a place where an inflammable gas leaks.  
If gas leaks and accumulates in the area surrounding the unit, it could cause an explosion.
- Install a ground leakage breaker depending on the installation place (where it is humid).  
If a ground leakage breaker is not installed, it could cause an electric shock.
- Perform the drainage/piping work securely according to the installation manual.  
If there is a defect in the drainage/piping work, water could drop from the unit and household goods could be wet and damaged.
- Fasten a flare nut with a torque wrench as specified in this manual.  
When fastened too tight, a flare nut may broken after a long period and cause a leakage of refrigerant.

## 2. Selecting the installation location

### 2.1. Indoor unit

- Where airflow is not blocked.
- Where cool air spreads over the entire room.
- Where it is not exposed to direct sunshine.
- At a distance 1 m or more away from your TV and radio (to prevent picture from being distorted or noise from being generated).
- In a place as far away as possible from fluorescent and incandescent lights (so the infrared remote control can operate the air conditioner normally).
- Where the air filter can be removed and replaced easily.

**⚠ Warning:**

**Mount the indoor unit into a ceiling strong enough to withstand the weight of the unit.**

The indoor models should be installed the ceiling over than 2.5 m from floor.

### 2.2. Outdoor unit

- Where it is not exposed to strong wind.
- Where airflow is good and dustless.
- Where it is not exposed to rain and direct sunshine.
- Where neighbours are not annoyed by operation sound or hot air.
- Where rigid wall or support is available to prevent the increase of operation sound or vibration.
- Where there is no risk of combustible gas leakage.
- When installing the unit at a high level, be sure to fix the unit legs.
- Where it is at least 3 m away from the antenna of TV set or radio. (Otherwise, images would be disturbed or noise would be generated.)
- Install the unit horizontally.

**⚠ Caution:**

**Avoid the following places for installation where air conditioner trouble is liable to occur.**

- Where there is too much machine oil.
- Salty environment as seaside areas.
- Hot-spring areas.
- Where sulfide gas exists.
- Other special atmospheric areas.

## 3. Selecting an installation site & Accessories

- Select a site with sturdy fixed surface sufficiently durable against the weight of unit.
- Before installing unit, the routing to carry in unit to the installation site should be determined.
- Select a site where the unit is not affected by entering air.
- Select a site where the flow of supply and return air is not blocked.
- Select a site where refrigerant piping can easily be led to the outside.
- Select a site which allows the supply air to be distributed fully in room.
- Do not install unit at a site with oil splashing or steam in much quantity.
- Do not install unit at a site where combustible gas may generate, flow in, stagnate or leak.
- Do not install unit at a site where equipment generating high frequency waves (a high frequency wave welder for example) is provided.
- Do not install unit at a site where fire detector is located at the supply air side. (Fire detector may operate erroneously due to the heated air supplied during heating operation.)
- When special chemical product may scatter around such as site chemical plants and hospitals, full investigation is required before installing unit. (The plastic components may be damaged depending on the chemical product applied.)
- If the unit is run for long hours when the air above the ceiling is at high temperature/high humidity (due point above 26 °C), due condensation may be produced in the indoor unit. When operating the units in this condition, add insulation material (10-20 mm) to the entire surface of the indoor unit to avoid due condensation.

### 3.1. Install the indoor unit on a ceiling strong enough to sustain its weight

Secure enough access space to allow for the maintenance, inspection, and replacement of the motor, fan, drain pump, heat exchanger, and electric box in one of the following ways.

Select an installation site for the indoor unit so that its maintenance access space will not be obstructed by beams or other objects.

- (1) When a space of 300 mm or more is available below the unit between the unit and the ceiling (Fig. 3-1-1)
  - Create access door 1 and 2 (450 x 450 mm each) as shown in Fig. 3-1-2. (Access door 2 is not required if enough space is available below the unit for a maintenance worker to work in.)
- (2) When a space of less than 300 mm is available below the unit between the unit and the ceiling (At least 20 mm of space should be left below the unit as shown in Fig. 3-1-3.)
  - Create access door 1 diagonally below the electric box and access door 3 below the unit as shown in Fig. 3-1-4.
  - or
  - Create access door 4 below the electric box and the unit as shown in Fig. 3-1-5.

[Fig. 3-1-1] (P.2)

[Fig. 3-1-2] (Viewed from the direction of the arrow A)(P.2)

[Fig. 3-1-3] (P.2)

[Fig. 3-1-4] (Viewed from the direction of the arrow B)(P.2)

[Fig. 3-1-5] (Viewed from the direction of the arrow B)(P.2)

- |                                   |                                   |
|-----------------------------------|-----------------------------------|
| Ⓐ Electric box                    | ⓑ Ceiling                         |
| Ⓒ Ceiling beam                    | Ⓓ Access door 2 (450 mm x 450 mm) |
| Ⓔ Access door 1 (450 mm x 450 mm) | Ⓕ Maintenance access space        |
| Ⓖ Supply air                      | Ⓗ Intake air                      |
| Ⓛ Bottom of indoor unit           | Ⓣ Access door 3                   |
| Ⓚ Access door 4                   |                                   |

**⚠ Warning:**

**The unit must be securely installed on a structure that can sustain its weight. If the unit is mounted on an unstable structure, it may fall down causing injuries.**

**⚠ Warning:**

- This unit should be installed in rooms which exceed the floor space specified in outdoor unit installation manual. Refer to outdoor unit installation manual.
- Install the indoor unit at least 2.5 m above floor or ground level. For appliances not accessible to the general public.
- Refrigerant pipes connection shall be accessible for maintenance purpose.

### 3.2. Securing installation and service space

- Select the optimum direction of supply airflow according to the configuration of the room and the installation position.
- As the piping and wiring are connected at the bottom and side surfaces, and the maintenance is made at the same surfaces, allow a proper space properly. For the efficient suspension work and safety, provide a space as much as possible.

### 3.3. Indoor unit accessories

The unit is provided with the following accessories:

No.	Name	Quantity
①	Pipe cover (for refrigerant piping joint) Small diameter	1
②	Pipe cover (for refrigerant piping joint) Large diameter	1
③	Bands for temporary tightening of pipe cover and drain hose	6
④	Remote controller parts	1
⑤	Signal receiving unit	1
⑥	Signal receiving unit cable	1
⑦	Washer	8
⑧	Drain hose	1
⑨	Pipe cover (for Drain hose) short	1

## 4. Fixing hanging bolts

### 4.1. Fixing hanging bolts

[Fig. 4-1] (P.3)

- Ⓐ Center of gravity

(Give site of suspension strong structure.)

#### Hanging structure

- Ceiling: The ceiling structure varies from building to one another. For detailed information, consult your construction company.

#### Center of gravity and Product Weight

Model name	W	L	X	Y	Z	Product Weight (kg)
SEZ-M25	625	752	263	351	106	17.5
SEZ-M35	625	952	286	448	104	21
SEZ-M50	625	952	280	437	104	22
SEZ-M60	625	1152	285	527	104	25.5
SEZ-M71	625	1152	285	527	104	25.5

- If necessary, reinforce the hanging bolts with anti-quake supporting members as countermeasures against earthquakes.

\* Use M10 for hanging bolts and anti-quake supporting members (field supply).

- ① Reinforcing the ceiling with additional members (edge beam, etc.) must be required to keep the ceiling at level and to prevent the ceiling from vibrations.
- ② Cut and remove the ceiling members.
- ③ Reinforce the ceiling members, and add other members for fixing the ceiling boards.

## 5. Installing the unit

### 5.1. Hanging the unit body

- ▶ Bring the indoor unit to an installation site as it is packed.
- ▶ To hang the indoor unit, use a lifting machine to lift and pass through the hanging bolts.

[Fig. 5-1] (P.3)

- Ⓐ Unit body  
Ⓑ Lifting machine

[Fig. 5-2] (P.3)

- Ⓒ Nuts (field supply)  
Ⓓ Washers (accessory)  
Ⓔ M10 hanging bolt (field supply)

### 5.2. Confirming the unit's position and fixing hanging bolts

- ▶ Ensure that the hanging bolt nuts are tightened to fix the hanging bolts.
- ▶ To ensure that drain is discharged, be sure to hang the unit at level using a level.

#### ⚠ Caution:

Install the unit in horizontal position. If the side with drain port is installed higher, water leakage may be caused.

## 6. Refrigerant piping work

### 6.1. Refrigerant pipe

[Fig. 6-1] (P.4)

- Ⓐ Indoor unit
- Ⓑ Outdoor unit

Refer to the Instruction Manual that came with the outdoor unit for the restrictions on the height difference between units and for the amount of additional refrigerant charge.

Avoid the following places for installation where air conditioner trouble is liable to occur.

- Where there is too much oil such as for machine or cooking.
- Salty environment as seaside areas.
- Hot-spring areas.
- Where sulfide gas exists.
- Other special atmospheric areas.
- This unit has flared connections on both indoor and outdoor sides. (Fig. 6-1)
- Insulate both refrigerant and drainage piping completely to prevent condensation.

#### Piping preparation

- Refrigerant pipes of 3, 5, 7, 10 and 15 m are available as optional items.

(1) Table below shows the specifications of pipes commercially available.

Model	Pipe	Outside diameter		Min wall thickness	Insulation thickness	Insulation material
		mm	inch			
SEZ-M25	For liquid	6.35	1/4	0.8 mm	8 mm	Heat resisting foam plastic 0.045 specific gravity
	For gas	9.52	3/8	0.8 mm	8 mm	
SEZ-M35	For liquid	6.35	1/4	0.8 mm	8 mm	
	For gas	9.52	3/8	0.8 mm	8 mm	
SEZ-M50	For liquid	6.35	1/4	0.8 mm	8 mm	
	For gas	12.7	1/2	0.8 mm	8 mm	
SEZ-M60	For liquid	6.35	1/4	0.8 mm	8 mm	
	For gas	15.88	5/8	1.0 mm	8 mm	
SEZ-M71	For liquid	9.52	3/8	0.8 mm	8 mm	
	For gas	15.88	5/8	1.0 mm	8 mm	

(2) Ensure that the 2 refrigerant pipes are well insulated to prevent condensation.

(3) Refrigerant pipe bending radius must be 10 cm or more.

#### ⚠ Caution:

Using careful insulation of specified thickness. Excessive thickness prevents storage behind the indoor unit and smaller thickness causes dew dripage.

### 6.2. Flaring work

- Main cause of gas leakage is defect in flaring work.
- Carry out correct flaring work in the following procedure.

#### 6.2.1. Pipe cutting

[Fig. 6-3] (P.4)

- Ⓐ Copper tubes
- Ⓑ Good
- Ⓒ No good
- Ⓓ Tilted
- Ⓔ Uneven
- Ⓕ Burred

- Using a pipe cutter cut the copper tube correctly.

#### 6.2.2. Burrs removal

[Fig. 6-4] (P.4)

- Ⓐ Burr
- Ⓑ Copper tube/pipe
- Ⓒ Spare reamer
- Ⓓ Pipe cutter

- Completely remove all burrs from the cut cross section of pipe/tube.
- Put the end of the copper tube/pipe to downward direction as you remove burrs in order to avoid burrs drop in the tubing.

#### 6.2.3. Putting nut on

[Fig. 6-5] (P.4)

- Ⓐ Flare nut
- Ⓑ Copper tube

- Remove flare nuts attached to indoor and outdoor unit, then put them on pipe/tube having completed burr removal.
- (not possible to put them on after flaring work)
- Use the flare nut included with this indoor unit.

#### 6.2.4. Flaring work

[Fig. 6-6] (P.4)

- Ⓐ Flaring tool
- Ⓑ Die
- Ⓒ Copper tube
- Ⓓ Flare nut
- Ⓔ Yoke

- Carry out flaring work using flaring tool as shown below.

Pipe diameter (mm)	Dimension	
	A (mm)	B $^{+0}_{-0.4}$ (mm)
	When the tool for R32/R410A is used	
	Clutch type	
6.35	0 - 0.5	9.1
9.52	0 - 0.5	13.2
12.7	0 - 0.5	16.6
15.88	0 - 0.5	19.7

Firmly hold copper tube in a die in the dimension shown in the table at above.

- When reconnecting the detached refrigerant pipes, make sure to flare them again.

#### 6.2.5. Check

[Fig. 6-7] (P.4)

- Ⓐ Smooth all around
- Ⓑ Inside is shining without any scratches
- Ⓒ Even length all around
- Ⓓ Too much
- Ⓔ Tilted
- Ⓕ Scratch on flared plane
- Ⓖ Cracked
- Ⓗ Uneven
- Ⓘ Bad examples

- Compare the flared work with a figure in right side hand.
- If flare is noted to be defective, cut off the flared section and do flaring work again.

### 6.3. Pipe connection

[Fig. 6-8] (P.4)

- Apply a thin coat of refrigeration oil on the seat surface of pipe.
- For connection first align the center, then tighten the first 3 to 4 turns of flare nut.
- Use tightening torque table below as a guideline for indoor unit side union joint section, and tighten using two wrenches. Excessive tightening damages the flare section.

Copper pipe O.D. (mm)	Flare nut O.D. (mm)	Tightening torque (N·m)
ø6.35	17	14 - 18
ø9.52	22	34 - 42
ø12.7	26	49 - 61
ø15.88	29	68 - 82

#### ⚠ Warning:

Be careful of flying flare nut! (Internally pressurized)

Remove the flare nut as follows:

1. Loosen the nut until you hear a hissing noise.
2. Do not remove the nut until the gas has been completely released (i.e., hissing noise stops).
3. Check that the gas has been completely released, and then remove the nut.

#### Outdoor unit connection

Connect pipes to stop valve pipe joint of the outdoor unit in the same manner applied for indoor unit.

- For tightening use a torque wrench or spanner, and use the same tightening torque applied for indoor unit.

#### Refrigerant pipe insulation

- After connecting refrigerant piping, insulate the joints (flared joints) with thermal insulation tubing.

[Fig. 6-9] (P.4)

- Ⓐ Pipe cover (small) (accessory)
- Ⓑ Caution:
- Pull out the thermal insulation on the refrigerant piping at the site, insert the flare nut to flare the end, and replace the insulation in its original position.
- Take care to ensure that condensation does not form on exposed copper piping.
- Ⓒ Liquid end of refrigerant piping
- Ⓓ Site refrigerant piping
- Ⓔ Pipe cover (large) (accessory)
- Ⓕ Pull
- Ⓖ Return to original position
- Ⓗ Plate on main body
- Ⓙ Ensure that there is no gap here.
- Ⓚ Gas end of refrigerant piping
- Ⓛ Main body
- Ⓜ Thermal insulation (field supply)
- Ⓨ Flare nut
- ⓐ Ensure that there is no gap here
- ⓑ Band (accessory)
- ⓓ Ensure that there is no gap here. Place join upwards.

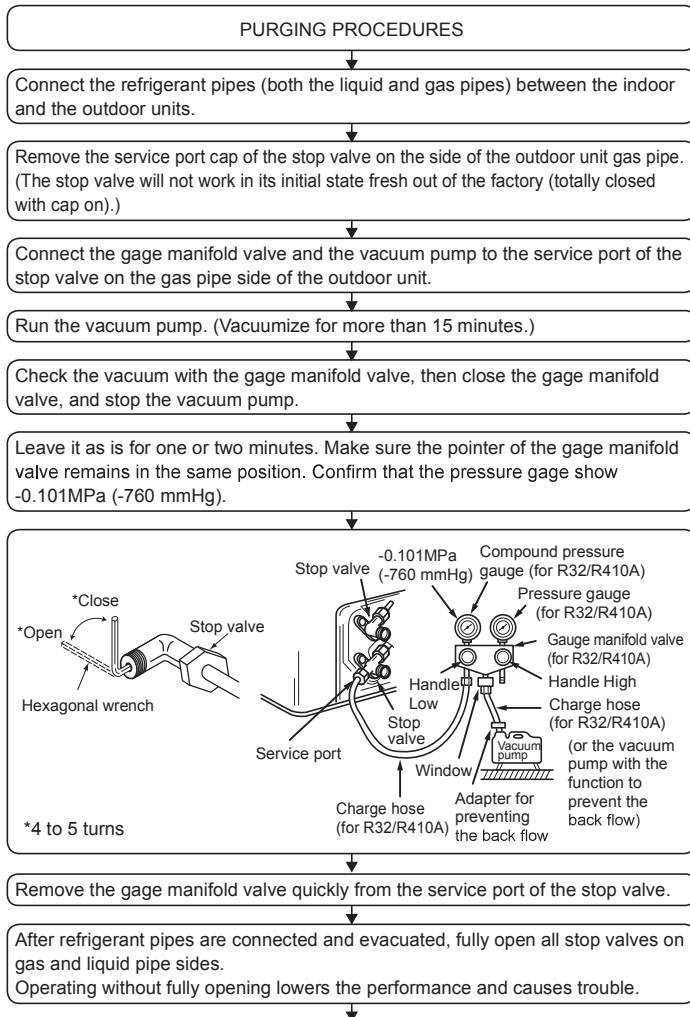
## 6. Refrigerant piping work

1. Remove and discard the rubber bung which is inserted in the end of the unit piping.
2. Flare the end of the site refrigerant piping.
3. Pull out the thermal insulation on the site refrigerant piping and replace the insulation in its original position.

### Cautions On Refrigerant Piping

- ▶ Be sure to use non-oxidative brazing for brazing to ensure that no foreign matter or moisture enter into the pipe.
- ▶ Be sure to apply refrigerating machine oil over the flare connection seating surface and tighten the connection using a double spanner.
- ▶ Provide a metal brace to support the refrigerant pipe so that no load is imparted to the indoor unit end pipe. This metal brace should be provided 50 cm away from the indoor unit's flare connection.

### 6.4. Purging procedures leak test

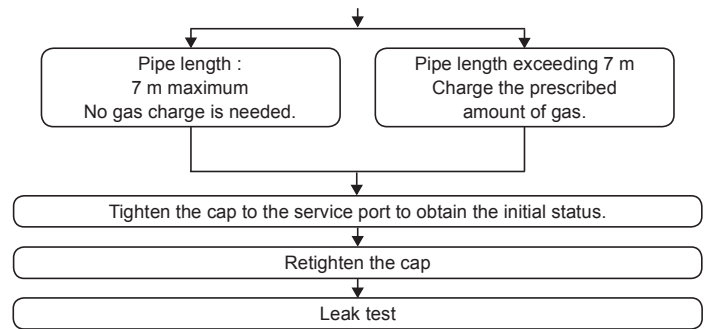


## 7. Duct work

- When connecting ducts, insert a canvas duct between the main body and the duct.
- Use non-combustible duct components.

### ⚠ Caution:

- The noise from the intake will increase dramatically if intake (A) is fitted directly beneath the main body. Intake (A) should therefore be installed as far away from the main body as possible. Particular care is required when using it with bottom inlet specifications.
- Install sufficient thermal insulation to prevent condensation forming on outlet duct flanges and outlet ducts.
- To connect the air conditioner main body and the duct for potential equalization.
- To reduce the risk of injury from metal sheet edges, wear protective gloves.
- To avoid electrical noise interference, do not run transmission lines at the bottom of the unit.



### 6.5. Drain piping work

#### [Fig. 6-10] (P.4)

- Ⓐ Downward slope 1/100 or more
- Ⓑ Connection dia. R1 external thread
- Ⓒ Indoor unit
- Ⓓ Collective piping
- Ⓔ Maximize this length to approx. 10 cm

- Ensure that the drain piping is downward (pitch of more than 1/100) to the outdoor (discharge) side. Do not provide any trap or irregularity on the way. (①)
- Ensure that any cross-wise drain piping is less than 20 m (excluding the difference of elevation). If the drain piping is long, provide metal braces to prevent it from waving. Never provide any air vent pipe. Otherwise drain may be ejected.
- Use a hard vinyl chloride pipe O.D. ø32 for drain piping.
- Ensure that collected pipes are 10 cm lower than the unit body's drain port as shown in ②.
- Do not provide any odor trap at the drain discharge port.
- Put the end of the drain piping in a position where no odor is generated.
- Do not put the end of the drain piping in any drain where ionic gases are generated.

#### [Fig. 6-11] (P.4)

- Ⓐ Indoor unit
- Ⓑ Pipe cover (short) (accessory)
- Ⓒ Tie band (accessory)
- Ⓓ Band fixing part
- Ⓔ Insertion margin
- Ⓕ Drain hose (accessory)
- Ⓖ Drain pipe (O.D. ø32 PVC TUBE, field supply)
- Ⓗ Insulating material (field supply)
- Ⓘ Max.145 ± 5 mm

1. Insert the drain hose (accessory) into the drain port. (The drain hose must not be bent more than 45° to prevent the hose from breaking or clogging.)  
The connecting part between the indoor unit and the drain hose may be disconnected at the maintenance. Fix the part with the accessory band, not be adhered.
2. Attach the drain pipe (O.D. ø32 PVC TUBE, field supply). (Attach the pipe with glue for the hard vinyl chloride pipe, and fix it with the band (small, accessory).)
3. Perform insulation work on the drain pipe (O.D. ø32 PVC TUBE) and on the socket (including elbow).

- Keep the distance between the inlet grille and the fan over 850 mm. If it is less than 850 mm, install a safety guard not to touch the fan.

#### [Fig. 7-1] (P.5)

- Ⓐ Air inlet
- Ⓑ Air outlet
- Ⓒ Access door
- Ⓓ Ceiling surface
- Ⓔ Canvas duct
- Ⓕ Air filter
- Ⓖ Inlet grille

## 8. Electrical work

### 8.1. Power supply

Electrical specification	Input capacity Main Switch/Fuse (A)				
	SEZ-M25	SEZ-M35	SEZ-M50	SEZ-M60	SEZ-M71
Power supply (1 phase ~/N, 230V, 50Hz)	10	10	20	20	20

#### ⚠ Warning:

- The compressor will not operate unless the power supply phase connection is correct.
- Grounding protection with a no-fuse breaker (earth leakage breaker [ELB]) is usually installed for ⑩.
- The connection wiring between the outdoor and indoor units can be extended up to a maximum of 50 meters, and the total extension including the crossover wiring between rooms is a maximum of 80 m.

A switch with at least 3 mm contact separation in each pole shall be provided by the air conditioner installation.

\* Label each breaker according to purpose (heater, unit etc.).

#### [Fig. 8-1] (P.5)

- Ⓐ Indoor unit
- Ⓑ Outdoor unit
- Ⓒ Signal receiving unit
- Ⓓ Wireless remote controller
- Ⓔ Main switch/fuse
- Ⓕ Grounding

### 8.2. Indoor wire connection

Work procedure

1. Remove 2 screws to detach the electric component cover.
  2. Route each cable through the wiring intake into the electric component box.  
(Procure power cable and in-out connecting cable locally and use remote control cable supplied with the unit.)
  3. Securely connect the power cable and the in-out connecting cable and the remote control cable to the terminal blocks.
  4. Secure the cables with clamps inside the electric component box.
  5. Attach the electric component cover as it was.
- Fix power supply cable and indoor/outdoor cable to control box by using buffer bushing for tensile force. (PG connection or the like.)

#### ⚠ Warning:

- Attach the electrical part cover securely. If it is attached incorrectly, it could result in a fire, electric shock due to dust, water, etc.
- Use the specified indoor/outdoor unit connecting wire to connect the indoor and outdoor units and fix the wire to the terminal bed securely so that no stress is applied to the connecting section of the terminal bed. Incomplete connection or fixing of the wire could result in a fire.

#### [Fig. 8-2-1] (P.5)

- Ⓐ Screw holding cover (2 pcs)
- Ⓑ Cover

#### [Fig. 8-2-2] (P.5)

- Ⓐ Terminal bed box
- Ⓑ Knockout hole
- Ⓒ Remove

#### [Fig. 8-2-3] (P.5)

- Ⓔ Use PG bushing to keep the weight of the cable and external force from being applied to the power supply terminal connector. Use a cable tie to secure the cable.
- Ⓕ Indoor/outdoor unit connecting wire
- Ⓖ Tensile force
- Ⓗ Use ordinary bushing
- Ⓘ Signal receiving unit wiring

#### [Fig. 8-2-4] (P.5)

- Ⓙ Terminal bed for power source and indoor transmission
- Ⓚ Indoor/outdoor unit connecting wire
- Ⓛ Connecting the signal receiving unit  
Connect the signal receiving unit to the CN90 (Connect to the wireless remote controller board) on the indoor unit using the supplied remote controller wire. Connect the signal receiving units to all the indoor units.

#### [Fig. 8-3] (P.6)

- Ⓐ Indoor terminal block
- Ⓑ Earth wire (green/yellow)
- Ⓒ Indoor/outdoor unit connecting wire 3-core 1.5 mm<sup>2</sup> or more
- Ⓓ Outdoor terminal block
- Ⓔ Power supply cord
- Ⓕ Indoor controller board
- ① Connecting cable  
Cable 3-core 1.5 mm<sup>2</sup>, in conformity with Design 245 IEC 57.
- ② Indoor terminal block
- ③ Outdoor terminal block
- ④ Always install an earth wire (1-core 1.5 mm<sup>2</sup>) longer than other cables
- ⑤ Signal receiving unit cable (accessory) (wire length : 5 m)
- ⑥ Signal receiving unit
- ⑦ Power supply cord

- Perform wiring as shown in [Fig. 8-3] (P.6). (Procure the cable locally.)  
Make sure to use cables of the correct polarity only.
- Connect the terminal blocks as shown in [Fig. 8-3] (P.6).

#### ⚠ Caution:

- Use care not to make mis-wiring.
- Firmly tighten the terminal screws to prevent them from loosening.
- After tightening, pull the wires lightly to confirm that they do not move.

### 8.3. Remote controller

#### 8.3.1. For wireless remote controller

##### 1) Installation area

- Area in which the remote controller is not exposed to direct sunshine.
- Area in which there is no nearby heating source.
- Area in which the remote controller is not exposed to cold (or hot) winds.
- Area in which the remote controller can be operated easily.
- Area in which the remote controller is beyond the reach of children.

##### 2) Installation method [Fig. 8-4] (P.6)

- ① Attach the remote controller holder to the desired location using two tapping screws.
- ② Place the lower end of the controller into the holder.
  - Ⓐ Remote controller
  - Ⓑ Wall
  - Ⓒ Display panel
  - Ⓓ Receiver

- The signal can travel up to approximately 7 meters (in a straight line) within 45 degrees to both right and left of the center line of the receiver.

##### 3) Setting the Model No.

- ① Insert batteries.
- ② Press the SET button with something sharp at the end.  
MODEL SELECT blinks and Model No. is lighted.
- ③ Press the temp  $\odot$   $\ominus$  button to set the Model No.
- ④ Press the SET button with something sharp at the end.  
MODEL SELECT and Model No. are lighted for three seconds, then turned off.

Indoor	Outdoor	Model No.
SEZ	heat pump models	026
	cooling only models	058

#### 8.3.2. Signal Receiving Unit

##### 1) Sample system connection

###### [Fig. 8-5] (P.6)

Only the wiring from the signal receiving unit and between the remote controllers is shown in Fig. 8-5. The wiring differs depending on the unit to be connected or the system to be used.

For details on restrictions, refer to the installation manual or the service handbook that came with the unit.

##### 1. Connecting to Mr. SLIM air conditioner

###### (1) Standard 1:1

- ① Connecting the signal receiving unit  
Connect the signal receiving unit to the CN90 (Connect to the wireless remote controller board) on the indoor unit using the supplied remote controller wire. Connect the signal receiving units to all the indoor units.

##### 2) Setting the pair number switch

###### [Fig. 8-6] (P.6)

##### 1. Setting method

Assign the same pair number to the wireless remote controller as that of the indoor unit. If not doing so, the remote controller cannot be operated. Refer to the installation manual that came with the wireless remote controller for how to set pair numbers of wireless remote controllers.

Position of daisy wire on the controller circuit board on the indoor unit.



## 8. Electrical work

For pair number settings, the following 4 patterns (A-D) are available.

Pair number setting pattern	Pair number on remote controller side	Indoor controller circuit board side Point where the daisy wire is disconnected
A	0	Not disconnected
B	1	J41 disconnected
C	2	J42 disconnected
D	3~9	J41 and J42 disconnected

### 2. Setting example

(1) To use the units in the same room

#### [Fig. 8-7] (P.6)

① Separate setting

Assign a different pair number to each indoor unit to operate each indoor unit by its own wireless remote controller.

#### [Fig. 8-8] (P.6)

② Single setting

Assign the same pair number to all the indoor units to operate all the indoor units by a single wireless remote controller.

#### [Fig. 8-9] (P.6)

(2) To use the units in different rooms

Assign the same pair number to the wireless remote controller as that of the indoor unit. (Leave the setting as it is at purchase.)

### 3) How To Install

#### [Fig. 8-10] (P.7) to [Fig. 8-19] (P.8)

#### 1. Common items for "Installation on the ceiling" and "Installation on the switch box or on the wall"

##### [Fig. 8-10] (P.7)

- |                                  |                                 |
|----------------------------------|---------------------------------|
| Ⓐ Signal receiving unit external | Ⓔ 6.5 mm (1/4 inch)             |
| Ⓑ Center of Switch box           | Ⓕ 70 mm (2 - 3/4 inch)          |
| Ⓒ Switch box                     | Ⓖ 83.5 ± 0.4 mm (3 - 9/32 inch) |
| Ⓓ Installation pitch             | Ⓖ Protrusion (pillar, etc)      |

##### [Fig. 8-11] (P.7)

- Ⓐ Remote controller wire
- Ⓑ Hole (drill a hole on the ceiling to pass the remote controller wire.)
- Ⓒ Signal Receiving Unit

(1) Select the installation site.

The following must be observed.

- ① Connect the signal receiving unit to the indoor unit with the supplied remote controller wire. Note that the length of the remote controller wire is 5 m (16 ft). Install the remote controller within the reach of the remote controller wire.
- ② When installing on either the switch box or the wall, allow space around the Signal Receiving Unit as shown in the figure in [Fig. 8-10].
- ③ When installing the Signal Receiving Unit to the switch box, the Signal Receiving Unit slipped downward for 6.5 mm (1/4 inch) as right illustrated.
- ④ Parts which must be supplied on site.
  - Switch box for one unit
  - Thin-copper wiring pipe
  - Lock nut and bushing
- ⑤ The thickness of the ceiling to which the remote controller is installed must be between 9 mm (3/8 inch) and 25 mm (1 inch).
- ⑥ Install the unit on the ceiling or on the wall where the signal can be received from the wireless remote controller.
 

The area where the signal from the wireless remote controller can be received is 45° and 7 m (22 ft) away from the front of the signal receiving unit.
- ⑦ Install the signal receiving unit to the position depending on the indoor unit model.
- ⑧ Connect the remote controller wire securely to the order wire. To pass the remote controller wire through the conduit, follow the procedure as shown in Fig. 8-12.

##### [Fig. 8-12] (P.7)

- |                          |              |
|--------------------------|--------------|
| Ⓐ Fix tightly with tape. | Ⓒ Order wire |
| Ⓑ Remote controller wire |              |

#### Note:

- The point where the remote controller wire is connected differs depending on the indoor unit model.
 

Take into account that the remote controller wire cannot be extended when selecting the installation site.
- If the Signal Receiving Unit is installed near a fluorescent lamp specially inverter type, signal interception may occur.
 

Be careful for installing the Signal Receiving Unit or replacing the lamp.

#### 2. Installation on the switch box or on the wall

(1) Use the remote controller wire to connect it to the connector (CN90) on the controller circuit board on the indoor unit.

(2) Seal the Signal Receiving Unit cord lead-in hole with putty in order to prevent the possible entry of dew, water droplets, cockroaches, other insects, etc.

##### [Fig. 8-15] (P.7)

- Ⓐ 150 mm (5 - 15/16 inch)
- Ⓑ Remote controller wire (Accessory)
- Ⓒ Wiring pipe
- Ⓓ Locknut
- Ⓔ Bushing
- Ⓕ Switch box
- Ⓖ Seal around here with putty

- When installing on the switch box, seal the connections between the switch box and wiring pipe with putty.

##### [Fig. 8-15] (P.7)

- Ⓖ Seal around here with putty
- Ⓒ Remote controller wire
- Ⓖ Seal around here with putty

- When opening a hole using a drill for Signal Receiving Unit wire (or taking the wire out of the back of the Signal Receiving Unit), seal that hole with putty.
- When routing the wire via the portion cut off from the upper case, equally seal that portion with putty.

(3) Install the remote control wire to the terminal block.

##### [Fig. 8-16] (P.8)

- Ⓐ Insert the minus screwdriver toward the arrow pointed and wrench it to remove the cover.
 

A flat screwdriver whose width of blade is between 4 and 7 mm (5/32 - 9/32 inch) must be used.

(4) Installing hole when the Signal Receiving Unit is installed on the wall direct.

##### [Fig. 8-17] (P.8)

- Ⓐ Thin-wall portion
- Ⓑ Bottom case
- Ⓒ Remote controller wire
- Ⓓ Conducting wire

- Cut the thin-wall portion inside the bottom case (oblique section) by a knife or a nipper.
- Take out the connected remote controller wire to the terminal block through this space.

(5) Install the lower case on the switch box or directly on the wall.

##### [Fig. 8-18] (P.8)

- Ⓐ Screw (M4 × 30)
 

\* When installing the lower case directly on the wall or the ceiling, use wood screws.

#### Mounting the cover

##### [Fig. 8-19] (P.8)

- ① Hang the cover to the upper hooks (2 places).
- ② Mount the cover to the lower case
- Ⓐ Cross-section of upper hooks

#### ⚠ Caution:

- Insert the cover securely until the clicking sound is made. If not doing so, the cover may fall.

## 8. Electrical work

### 8.4. Function settings (Function selection via the remote controller)

#### 8.4.1 Function setting on the unit (Selecting the unit functions)

##### 1) Changing the external static pressure setting

[Fig. 8-20] (P.8)

- Ⓐ Hour button
- Ⓑ Minute button
- Ⓒ TEMP button
- Ⓓ TEMP button
- Ⓔ ON/OFF button
- Ⓕ CHECK button

- Be sure to change the external static pressure setting depending on the duct and the grill used.

##### ① Go to the function select mode

Press the CHECK button (Ⓕ) twice continuously.

(Start this operation from the status of remote controller display turned off.)

CHECK is lighted and "00" blinks.

Press the TEMP button (Ⓒ) once to set "50". Direct the wireless remote controller toward the receiver of the indoor unit and press the Hour button (Ⓐ).

##### ② Setting the unit number

Press the TEMP button (Ⓒ) and (Ⓓ) to set the unit number to 01-04 or 07. Direct the wireless remote controller toward the receiver of the indoor unit and press the Minute button (Ⓑ).

##### ③ Selecting a mode

Enter 08 to change the external static pressure setting using the (Ⓒ) and (Ⓓ) buttons. Direct the wireless remote controller toward the receiver of the indoor unit and press the Hour button (Ⓐ).

Current setting number:     1 = 1 beep (one second)  
                                       2 = 2 beeps (one second each)  
                                       3 = 3 beeps (one second each)

##### ④ Selecting the setting number

Use the (Ⓒ) and (Ⓓ) buttons to change the external static pressure setting to be used.

Direct the wireless remote controller toward the sensor of the indoor unit and press the Hour button (Ⓐ).

##### ⑤ To set the external static pressure

Repeat steps ③ and ④ to set the mode number to 10.

##### ⑥ Complete function selection

Direct the wireless remote controller toward the sensor of the indoor unit and press the ON/OFF button (Ⓔ).

External static pressure	Setting no. of mode no. 08	Setting no. of mode no. 10
05 Pa	1	2
15 Pa (before shipment)	1	1
35 Pa	2	1
50 Pa	3	1

#### Note:

- Whenever changes are made to the function settings after installation or maintenance, be sure to record the changes with a mark in the "Check" column of the Function table.

#### 2) Other functions

① Select unit number 00 for the settings. (Settings for all indoor units)

Refer to Function table 1.

② Select unit number 01 to 04 or 07 for the settings. (Settings for each indoor unit)

To set the indoor unit in the individual system, select unit number 01.

To set each indoor unit of two, three or four indoor units, which are connected when these units are simultaneously in operation, select unit number 01 to 04.

To set all indoor units of two, three or four indoor units which are connected when these units are simultaneously in operation, select 07.

Refer to Function table 2.

Function table 1

Select unit number 00

Mode	Settings	Mode no.	Setting no.	Initial setting	Check
Power failure automatic recovery (AUTO RESTART FUNCTION)	Not available	01	1	*2	
	Available *1		2	*2	
Indoor temperature detecting	Indoor unit operating average	02	1	○	
	Set by indoor unit's remote controller		2		
	Remote controller's internal sensor		3		
LOSSNAY connectivity	Not Supported	03	1	○	
	Supported (indoor unit is not equipped with outdoor-air intake)		2		
	Supported (indoor unit is equipped with outdoor-air intake)		3		

Function table 2

Select unit numbers 01 to 04 or all units (AL [wired remote controller]/07 [wireless remote controller])

Mode	Settings	Mode no.	Setting no.	Initial setting	Check
Filter sign	100 Hr	07	1		
	2500 Hr		2		
	No filter sign indicator		3	○	
External static pressure	15 Pa	08	1	○	
	35 Pa		2		
	50 Pa		3		
	The same as setting of mode no. 08	10	1	○	
	5 Pa (set mode no. 08 to 1)		2		

\*1 When the power supply returns, the air conditioner will start 3 minutes later.

\*2 Power failure automatic recovery initial setting depends on the connecting outdoor unit.

**Note:** When the function of an indoor unit were changed by function selection after the end of installation, always indicate the contents by entering a ○ or other mark in the appropriate check filed of the tables.

## 9. Test run

### 9.1. Before test run

▶ After completing installation and the wiring and piping of the indoor and outdoor units, check for refrigerant leakage, looseness in the power supply or control wiring, wrong polarity, and no disconnection of one phase in the supply.

▶ Use a 500-volt megohmmeter to check that the resistance between the power supply terminals and ground is at least 1.0 MΩ.

▶ Do not carry out this test on the control wiring (low voltage circuit) terminals.

#### ⚠ Warning:

Do not use the air conditioner if the insulation resistance is less than 1.0 MΩ. Insulation resistance

After installation or after the power source to the unit has been cut for an extended period, the insulation resistance will drop below 1 MΩ due to refrigerant accumulating in the compressor. This is not a malfunction. Perform the following procedures.

1. Remove the wires from the compressor and measure the insulation resistance of the compressor.
2. If the insulation resistance is below 1 MΩ, the compressor is faulty or the resistance dropped due the accumulation of refrigerant in the compressor.

3. After connecting the wires to the compressor, the compressor will start to warm up after power is supplied. After supplying power for the times indicated below, measure the insulation resistance again.

- The insulation resistance drops due to accumulation of refrigerant in the compressor. The resistance will rise above 1 MΩ after the compressor is warmed up for two to three hours.

(The time necessary to warm up the compressor varies according to atmospheric conditions and refrigerant accumulation.)

- To operate the compressor with refrigerant accumulated in the compressor, the compressor must be warmed up at least 12 hours to prevent breakdown.

4. If the insulation resistance rises above 1 MΩ, the compressor is not faulty.

#### ⚠ Caution:

- The compressor will not operate unless the power supply phase connection is correct.

- Turn on the power at least 12 hours before starting operation.

- Starting operation immediately after turning on the main power switch can result in severe damage to internal parts. Keep the power switch turned on during the operational season.

## 9. Test run

### 9.2. Test run

#### 9.2.1. Using wireless remote controller

[Fig. 9-1] (P.9)

- Ⓐ TEST RUN button
- Ⓑ MODE button
- Ⓒ FAN button
- Ⓓ VANE button

■ Make sure to read operation manual before test run. (Especially items to secure safety)

- ① Turn on the power to the unit at least 12 hours before the test run.
- ② Press the TEST RUN button Ⓐ twice continuously.  
(Start this operation from the status of remote controller display turned off.)  
TEST RUN and current operation mode are displayed.

- ③ Press the MODE button Ⓑ to activate COOL mode, then check whether cool air is blown out from the unit.
- ④ Press the MODE button Ⓑ to activate HEAT mode, then check whether warm air is blown out from the unit.
- ⑤ Press the FAN button Ⓒ and check whether fan speed changes.
- ⑥ Press the ON/OFF button to stop the test run.

**Note:**

- Point the remote controller towards the indoor unit receiver while following steps ② to ⑥.
- It is not possible to run the in FAN, DRY or AUTO mode.

[Output pattern A] Errors detected by indoor unit

Wireless remote controller	Wired remote controller	Symptom	Remark
Beeper sounds/OPERATION INDICATOR lamp flashes (Number of times)	Check code		
1	P1	Intake sensor error	
2	P2, P9	Pipe (Liquid or 2-phase pipe) sensor error	
3	E6, E7	Indoor/outdoor unit communication error	
4	P4	Drain sensor error	
5	P5	Drain pump error	
6	P6	Freezing/Overheating safeguard operation	
7	EE	Communication error between indoor and outdoor units	
8	P8	Pipe temperature error	
9	E4	Remote controller signal receiving error	
10	—	—	
11	—	—	
12	Fb	Indoor unit control system error (memory error, etc.)	
14	PL	Refrigerant circuit abnormal	
No sound	--	No corresponding	

[Output pattern B] Errors detected by unit other than indoor unit (outdoor unit, etc.)

Wireless remote controller	Symptom	Remark
Beeper sounds/OPERATION INDICATOR lamp flashes (Number of times)		
1	Indoor/outdoor unit communication error (Transmitting error) (Outdoor unit)	For details, check the LED display of the outdoor controller board.
2	Compressor overcurrent interruption	
3	Open/short of outdoor unit thermistors	
4	Compressor overcurrent interruption (When compressor locked)	
5	Abnormal high discharging temperature/49C worked/ insufficient refrigerant	
6	Abnormal high pressure (63H worked)/ Overheating safeguard operation	
7	Abnormal temperature of heat sink	
8	Outdoor unit fan protection stop	
9	Compressor overcurrent interruption/Abnormal of power module	
10	Abnormality of super heat due to low discharge temperature	
11	Abnormality such as overvoltage or voltage shortage and abnormal synchronous signal to main circuit/Current sensor error	
12	—	
13	—	
14	Other errors (Refer to the technical manual for the outdoor unit.)	

\*1 If the beeper does not sound again after the initial two beeps to confirm the self-check start signal was received and the OPERATION INDICATOR lamp does not come on, there are no error records.

\*2 If the beeper sounds three times continuously “beep, beep, beep (0.4 + 0.4 + 0.4 sec.)” after the initial two beeps to confirm the self-check start signal was received, the specified refrigerant address is incorrect.

- On wireless remote controller  
The continuous buzzer sounds from receiving section of indoor unit.  
Blink of operation lamp
- On wired remote controller  
Check code displayed on the LCD.

## 9. Test run

- If the unit cannot be operated properly after the above test run has been performed, refer to the following table to remove the cause.

Symptom		Cause
Wired remote controller	LED 1, 2 (PCB in outdoor unit)	
PLEASE WAIT	For about 2 minutes following power-on	After LED 1, 2 are lighted, LED 2 is turned off, then only LED 1 is lighted. (Correct operation)
PLEASE WAIT → Error code	After about 2 minutes has expired following power-on	Only LED 1 is lighted. → LED 1, 2 blink.
Display messages do not appear even when operation switch is turned ON (operation lamp does not light up).		Only LED 1 is lighted. → LED 1, 2 blinks twice, LED 2 blinks once.

On the wireless remote controller with conditions above, following phenomena takes place.

- No signals from the remote controller are accepted.
- OPE lamp is blinking.
- The buzzer makes a short ping sound.

### Note:

**Operation is not possible for about 30 seconds after cancellation of function selection. (Correct operation)**

For description of each LED (LED1, 2, 3) provided on the indoor controller, refer to the following table.

LED 1 (power for microcomputer)	Indicates whether control power is supplied. Make sure that this LED is always lit.
LED 2 (power for remote controller)	Indicates whether power is supplied to the remote controller. This LED lights only in the case of the indoor unit which is connected to the outdoor unit refrigerant address "0".
LED 3 (communication between indoor and outdoor units)	Indicates state of communication between the indoor and outdoor units. Make sure that this LED is always blinking.

## 9.3. AUTO RESTART FUNCTION

### Indoor controller board

This model is equipped with the AUTO RESTART FUNCTION.

When the indoor unit is controlled with the remote controller, the operation mode, set temperature, and the fan speed are memorized by the indoor controller board.

The auto restart function sets to work the moment the power has restored after power failure, then, the unit will restart automatically.

Set the AUTO RESTART FUNCTION using the wireless remote controller. (Mode no.1).

## 10. Maintenance

### 10.1. Gas charge

#### [Fig. 10-1] (P.9)

- Ⓐ Indoor unit
- Ⓑ Union
- Ⓒ Liquid pipe
- Ⓓ Gas pipe
- Ⓔ Stop valve
- Ⓕ Outdoor unit
- Ⓖ Refrigerant gas cylinder operating valve
- Ⓗ Refrigerant gas cylinder for R32/R410A with siphon
- Ⓘ Refrigerant (liquid)
- Ⓢ Electronic scale for refrigerant charging
- Ⓚ Charge hose (for R32/R410A)
- Ⓛ Gauge manifold valve (for R32/R410A)
- Ⓜ Service port

1. Connect gas cylinder to the service port of stop valve (3-way).
2. Execute air purge of the pipe (or hose) coming from refrigerant gas cylinder.
3. Replenish specified amount of refrigerant, while running the air conditioner for cooling.

### Note:

In case of adding refrigerant, comply with the quantity specified for the refrigerating cycle.

### ⚠ Caution:

- **Do not discharge the refrigerant into the atmosphere.**  
Take care not to discharge refrigerant into the atmosphere during installation, reinstallation, or repairs to the refrigerant circuit.
- **For additional charging, charge the refrigerant from liquid phase of the gas cylinder.**  
If the refrigerant is charged from the gas phase, composition change may occur in the refrigerant inside the cylinder and the outdoor unit. In this case, ability of the refrigerating cycle decreases or normal operation can be impossible. However, charging the liquid refrigerant all at once may cause the compressor to be locked. Thus, charge the refrigerant slowly.

To maintain the high pressure of the gas cylinder, warm the gas cylinder with warm water (under 40°C) during cold season. But never use naked fire or steam.

---

This product is designed and intended for use in the residential,  
commercial and light-industrial environment.

The product at hand is  
based on the following  
EU regulations:

- Low Voltage Directive 2014/35/EU
- Electromagnetic Compatibility Directive  
2014/30/EU
- Energy-related Products Directive  
2009/125/EC
- Machinery Directive 2006/42/EC

Please be sure to put the contact address/telephone number on  
this manual before handing it to the customer.

**MITSUBISHI ELECTRIC CORPORATION**

HEAD OFFICE: TOKYO BLDG., 2-7-3, MARUNOUCHI, CHIYODA-KU, TOKYO 100-8310, JAPAN