

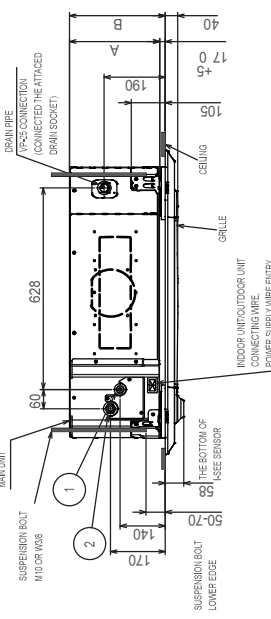
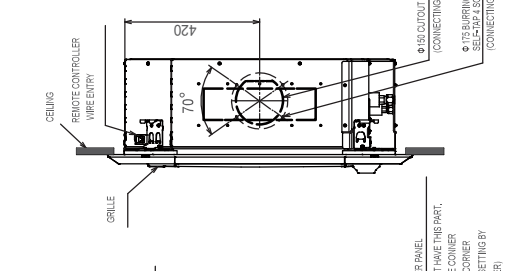
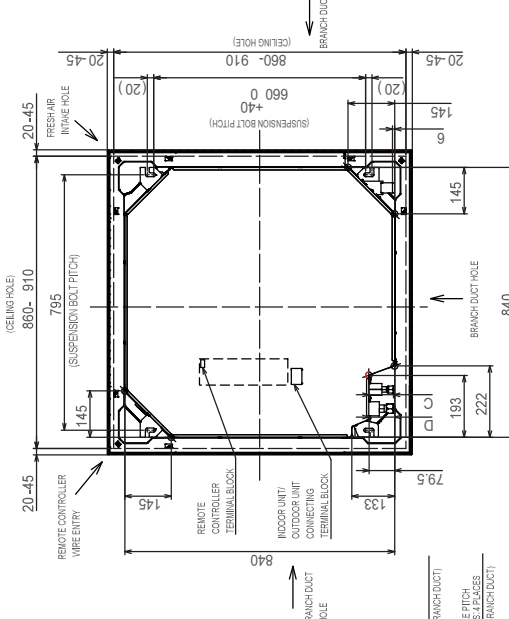
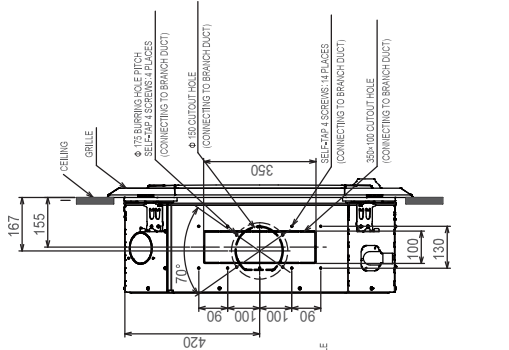
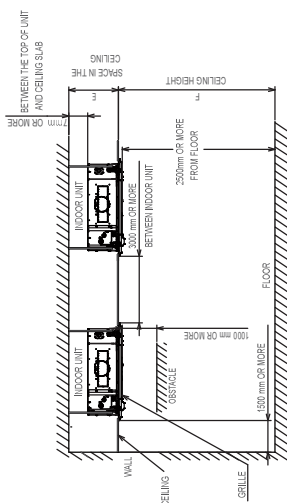
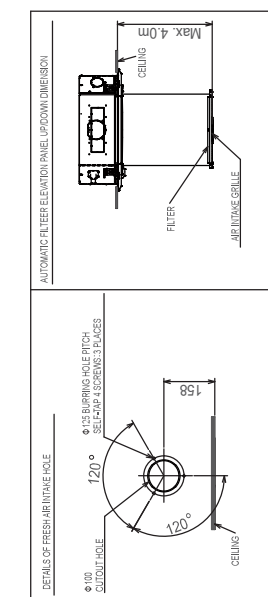
PLA-ZM35EA.UK
PLA-ZM100EA.UK

PLA-ZM50EA.UK
PLA-ZM125EA.UK

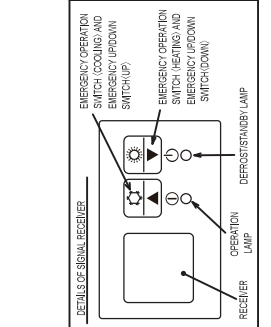
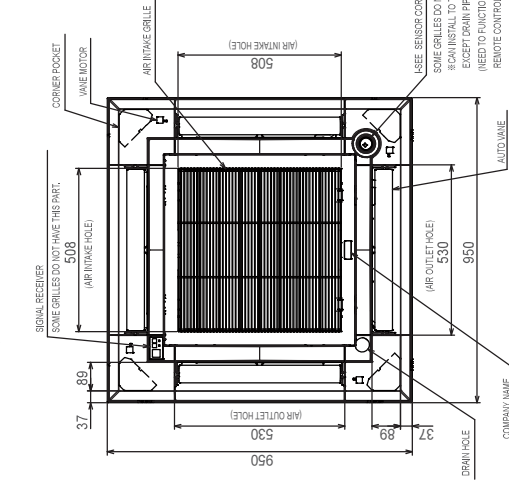
PLA-ZM60EA.UK
PLA-ZM140EA.UK

PLA-ZM71EA.UK

Unit: mm



- NOTE 1. CHOOSE THE GRILLE AMONG THE DEDICATED GRILLES.
- REINFORCE THE SUSPENSION BOLT FOR EARTHQUAKE RESISTANCE AS NEEDED.
- FOR THE SUSPENSION BOLT, USE M10 OR W3/8 (PROCURED AT THE LOCAL SITE.)
- FOR DRAIN PIPE, USE VP-25 (O.D. ϕ 32 PVC TUBE). DRAIN PIPE INCLUSION. FRAME IS MAX 800mm FROM THE CEILING. FOR THE SERVICE PURPOSE.
- LET THE SUSPENSION BOLT BE LOCATED AT THE CORNER. USE A LITTLE BIT FOR CONTROL POWER WIRES CONNECTION.
- THE HEIGHT OF THE INDOOR UNIT IS ABLE TO BE ADJUSTED WITH THE GRILLE ATTACHED.
- REQUIRES 'E' OR MORE SPACE BETWEEN TRANSOM AND CEILING FOR THE INSTALLATION.
- WHEN INSTALLING THE BRANCH DUCTS, BE SURE TO INSULATE ADEQUATELY. OTHERWISE CONDENSATION AND DRIPPING MAY OCCUR. (IT BECOMES THE CAUSE OF DEW DROPS/WEAR DEW.)
- AS FOR NECESSARY INSTALLATION SERVICE SPACE, PLEASE REFER TO THE RIGHT AT FIGURE.
- FOR THE INSTALLATION OF THE OPTIONAL HIGH EFFICIENCY FILTER OR MULTIFUNCTIONAL CASEMENT, REFER TO SPECIAL DRAWING.



ZM	(1)	(2)	A	B	C	D	E	F
3550	REFRIGERANT PIPE ϕ 13.5 FLARED CONNECTION 1/4"	REFRIGERANT PIPE ϕ 13.5 FLARED CONNECTION 1/2"	76	76.5	265	3302	OR MORE	4500
60	REFRIGERANT PIPE ϕ 9.52 FLARED CONNECTION 3/8"	REFRIGERANT PIPE ϕ 15.88 FLARED CONNECTION 3/4"	241	256	76.5	79.5	303	4500
71			291	296			303	4500
100-140							303	4500