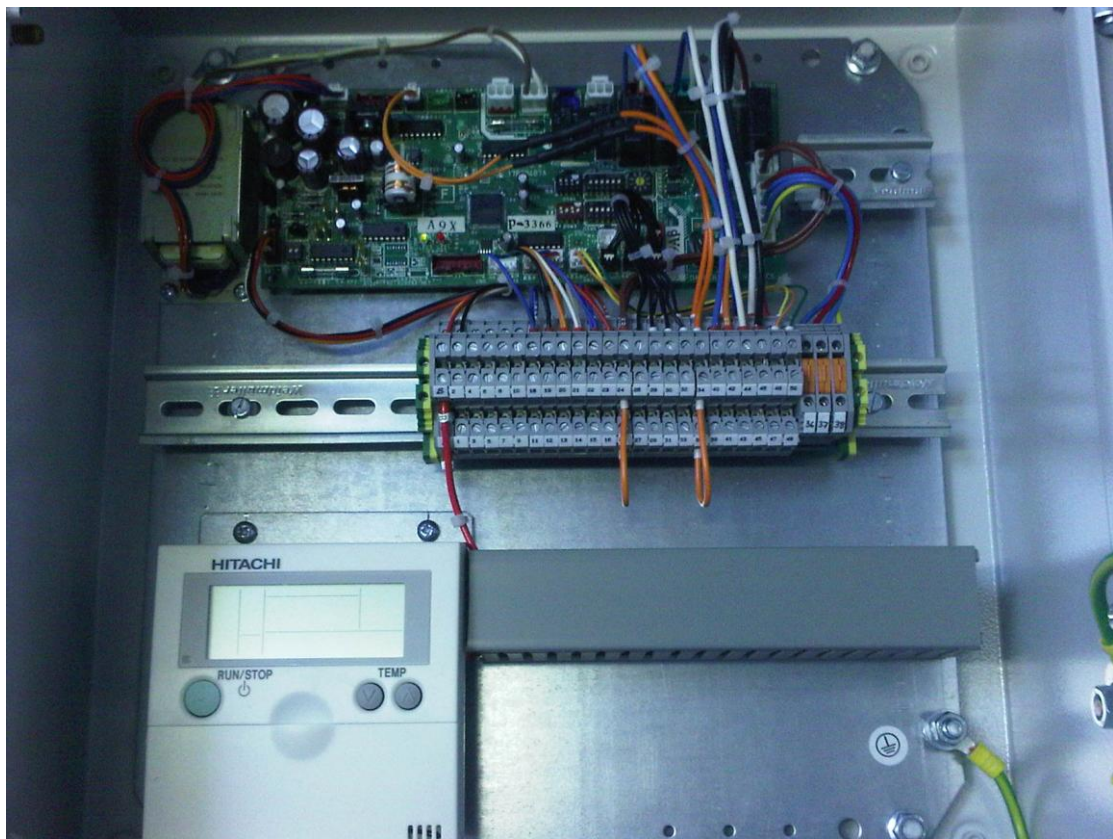


# Technical Bulletin

Number	044
Subject	AHU Interface - Hitachi
Date	12 April 2010

## Panel

The panel includes a Hitachi System Free Indoor Unit PCB and Remote Controller together with terminal blocks for the wiring, thermistors, valves, fan interlock, power supply etc:



The panel require a 3 amp fused spur only.

Interconnecting cable to Hitachi Outdoor Unit is 2 core 0.75mm<sup>2</sup> screened.

# Technical Bulletin

## Accessories supplied with RDXI Interface

Liquid Pipe Thermistor

*(install between expansion device and evaporator coil)*

Gas Pipe Thermistor

*(install on suction side of evaporator coil, as close to evaporator as possible)*

Return Air Thermistor

*(install in return air side of evaporator coil – not in fresh air supply)*

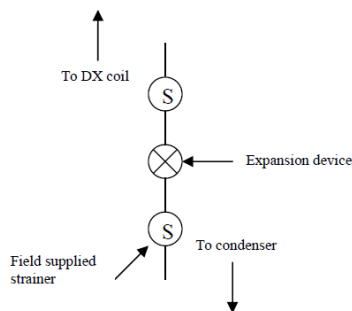
Supply Air Thermistor

*(install in supply air side of evaporator coil – 100mm away from coil in clean air)*

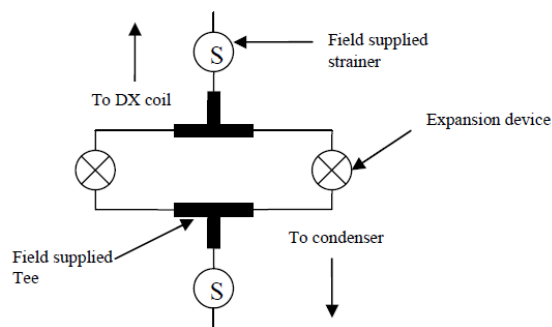
Expansion Valve/s

*(to be located as close as possible to AHU, within 1500mm)*

*Note that one valve will work for applications up to 6HP. This will be ONE PANEL, ONE VALVE*



*For applications between 8HP and 10HP you will need two valve kits coupled to a field supplied T-Joint. This will be ONE PANEL, TWO VALVES*



*For applications between 10HP and 20HP you will need two panels or a double panel. Please see installation manual for further instruction. This will need to be Price on Application.*

## Field Supply Items

Strainers – 2 per valve (one for the inlet and one for the outlet)

Copper Tee arrangement when using more than one valve per pipe connection

# Technical Bulletin

## **General Wiring Arrangement**

Please refer to installation manual and associated wiring diagram for full details

A,B	Hitachi Remote Controller	Already wired in panel
1, 2	H-Link	Hitachi comms to C/Unit
3, 4, 5, 6, 7, 8, 9, 10	Not used	
11,12,13, 14, 15, 16	LEV 1	From 1 – 6 on valve
18, 19, 20, 21, 22, 23	LEV 2	From 1 – 6 on valve
24, 25	Fan Interlock	Will turn off Condensing Unit when AHU fan stops
26, 27	Gas Pipe Thermistor	Thermistor Field Supplied
28, 29	Liquid Pipe Thermistor	Thermistor Field Supplied
30, 31	Air Outlet Thermistor	Thermistor Field Supplied
32, 33	Air Inlet Thermistor	Thermistor Field Supplied
34, 35	Pump/Float Switch	
36	Power In	Neutral
37	Power In	Live
38	Not used	Live (to PCB linked to 37)
40, 41, 42, 43, 44, 45, 46, 47	Pre-wired to PCB	
48 & 49	Permanent Heating	
49 & 50	Permanent Cooling	
PE	Power In/Earth	Earth

Fault Output to be via CN7 connection on PCB using PCC-1A adapter.