

Air Conditioning

Product Information

PEAD-M R32 Power Inverter Heat Pump
Ceiling Concealed Ducted System
(Three Phase)

Making a
World of
Difference

Mr.SUM™



The PEAD-M Power Inverter range is a ceiling concealed ducted system that blends a host of outstanding features with an unobtrusive design for easy installation and maintenance. Offering high seasonal efficiency, advanced control options and extended pipe runs, this range is extremely flexible and utilises low GWP R32 refrigerant.

Key Features

- Entire range only 250mm in height
- Wider range of external static pressure settings
- Drain pump included as standard
- Highly energy efficient operation, utilising low GWP R32 refrigerant
- Quiet operation with industry leading low noise levels
- Full heating capacity down to -3°C
- 100m pipe run (Size 100-140)
- Replace Technology available



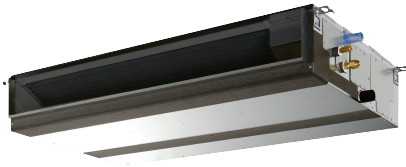
Air Conditioning | Heating
Ventilation | Controls

Air Conditioning

Product Information

PEAD-M R32 Power Inverter Heat Pump
Ceiling Concealed Ducted System
(Three Phase)

Making a
World of
Difference

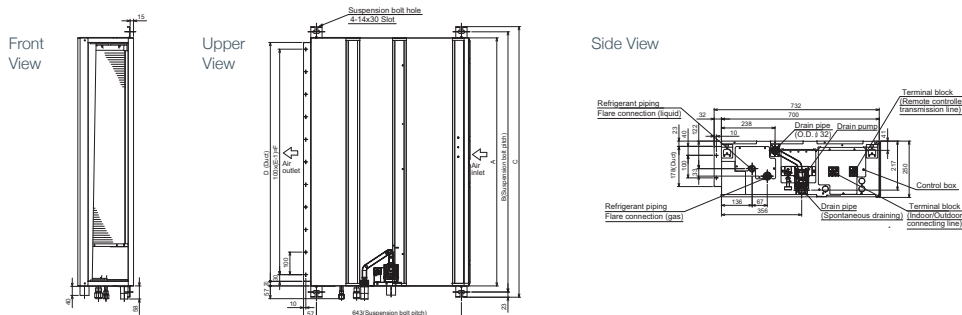


PEAD-M - INDOOR UNITS		PEAD-M100JA	PEAD-M125JA	PEAD-M140JA
CAPACITY (kW)	Heating (nominal) Cooling (nominal)	11.2 (4.5-14.0) 9.5 (4.9-11.4)	14.0 (5.0-16.0) 12.5 (5.5-14.0)	16.0 (5.7-18.0) 13.4 (6.2-15.3)
COP / EER (nominal)		4.31 / 4.18	4.18 / 3.75	4.03 / 3.69
SCOP / SEER (BS EN14825)		4.1 / 6.1	3.9 / 5.7	4.0 / 5.6
ERP ENERGY EFFICIENCY CLASS	Heating/Cooling	A+ / A++	A / A+	A+ / A+
AIRFLOW (l/s)	Lo-Mi-Hi	400-483-567	492-558-700	533-650-767
PIPE SIZE MM (in)	Gas Liquid	15.88 (5/8") 9.52 (3/8")	15.88 (5/8") 9.52 (3/8")	15.88 (5/8") 9.52 (3/8")
EXTERNAL STATIC PRESSURE (Pa)		35-50-70-100-150	35-50-70-100-150	35-50-70-100-150
SOUND PRESSURE LEVEL (dBA)	Lo-Mi-Hi	29-34-38	33-36-40	34-38-43
SOUND POWER LEVEL (dBA)		62	66	67
DIMENSIONS (mm)	Width x Depth x Height	1400 x 732 x 250	1400 x 732 x 250	1600 x 732 x 250
WEIGHT (kg)		39	40	44
ELECTRICAL SUPPLY		Fed by Outdoor Unit	Fed by Outdoor Unit	Fed by Outdoor Unit
FUSE RATING (BS88) - HRC (A)		6	6	6
INTERCONNECTING CABLE NO. CORES		4	4	4

PUZ-ZM - OUTDOOR UNITS		PUZ-ZM100YKA (Three Phase)	PUZ-ZM125YKA (Three Phase)	PUZ-ZM140YKA (Three Phase)
SOUND PRESSURE LEVEL (dBA)	Heating/Cooling	51 / 49	52 / 50	52 / 50
SOUND POWER LEVEL (dBA)	Cooling	69	70	70
WEIGHT (kg)		123	125	131
DIMENSIONS (mm)	Width x Depth x Height	1050 x 330 + 40 x 1338	1050 x 330 + 40 x 1338	1050 x 330 + 40 x 1338
ELECTRICAL SUPPLY		380-415v,50Hz	380-415v,50Hz	380-415v,50Hz
PHASE		Three	Three	Three
SYSTEM POWER INPUT (kW)	Heating/Cooling (nominal)	2.598 / 2.272	3.349 / 3.333	3.97 / 3.631
FUSE RATING (BS88) - HRC (A)		16	16	16
MAINS CABLE NO. CORES		5	5	5
MAX PIPE LENGTH (m)		100	100	100
MAX HEIGHT DIFFERENCE (m)		30	30	30
CHARGE REFRIGERANT (kg) / CO ₂ EQUIVALENT (t)	R32 (GWP 675) - 30m	4.00 / 2.70	4.00 / 2.70	4.00 / 2.70
MAX ADDITIONAL REFRIGERANT (kg) / CO ₂ EQUIVALENT (t)	R32 (GWP 675)	2.80 / 1.89	2.80 / 1.89	2.80 / 1.89

PRODUCT DIMENSIONS

PEAD-M100-140JA



Model	A	B	C	D	E	F
PEAD-M35.50JA	900	954	1000	860	9	800
PEAD-M60.71JA	1100	1154	1200	1060	11	1000
PEAD-M100.125JA	1400	1454	1500	1360	14	1300
PEAD-M140JA	1600	1654	1700	1560	16	1500



Telephone: 01707 282880
email: air.conditioning@meuk.mee.com
web: airconditioning.mitsubishielectric.co.uk microsite: timeforR32.co.uk

UNITED KINGDOM Mitsubishi Electric Europe Living Environment Systems Division
Travellers Lane, Hatfield, Hertfordshire, AL10 8XB, England General Enquiries Telephone: 01707 282880 Fax: 01707 278881

IRELAND Mitsubishi Electric Europe Westgate Business Park, Ballymount, Dublin 24, Ireland
Telephone: Dublin (01) 419 8800 Fax: Dublin (01) 419 8890 International code: (003531)

Country of origin: United Kingdom – Japan – Thailand – Malaysia. ©Mitsubishi Electric Europe 2017. Mitsubishi and Mitsubishi Electric are trademarks of Mitsubishi Electric Europe B.V. The company reserves the right to make any variation in technical specification to the equipment described, or to withdraw or replace products without prior notification or public announcement. Mitsubishi Electric is constantly developing and improving its products. All descriptions, illustrations, drawings and specifications in this publication present only general particulars and shall not form part of any contract. All goods are supplied subject to the Company's General Conditions of Sale, a copy of which is available on request. Third-party product and brand names may be trademarks or registered trademarks of their respective owners.

Note: The fuse rating is for guidance only. Please refer to the relevant databook for detailed specification. It is the responsibility of a qualified electrician/electrical engineer to select the correct cable size and fuse rating based on current regulation and site specific conditions. Mitsubishi Electric's air conditioning equipment and heat pump systems contain a fluorinated greenhouse gas, R410A (GWP:2088), R32 (GWP:675), R407C (GWP:1774) or R134a (GWP:1430). *These GWP values are based on Regulation(EU) No 517/2014 from IPCC 4th edition. In case of Regulation(EU) No.626/2011 from IPCC 3rd edition, these are as follows. R410A (GWP:1975), R32 (GWP: 550), R407C (GWP:1650) or R134a (GWP:1300).



www.greengateway.mitsubishielectric.co.uk
Mitsubishi Electric UK's commitment to the environment

Follow us @meuk_Jes
Follow us @green_gateway

Mitsubishi Electric
Living Environmental Systems UK

mitsubishielectric2

Effective as of May 2017

