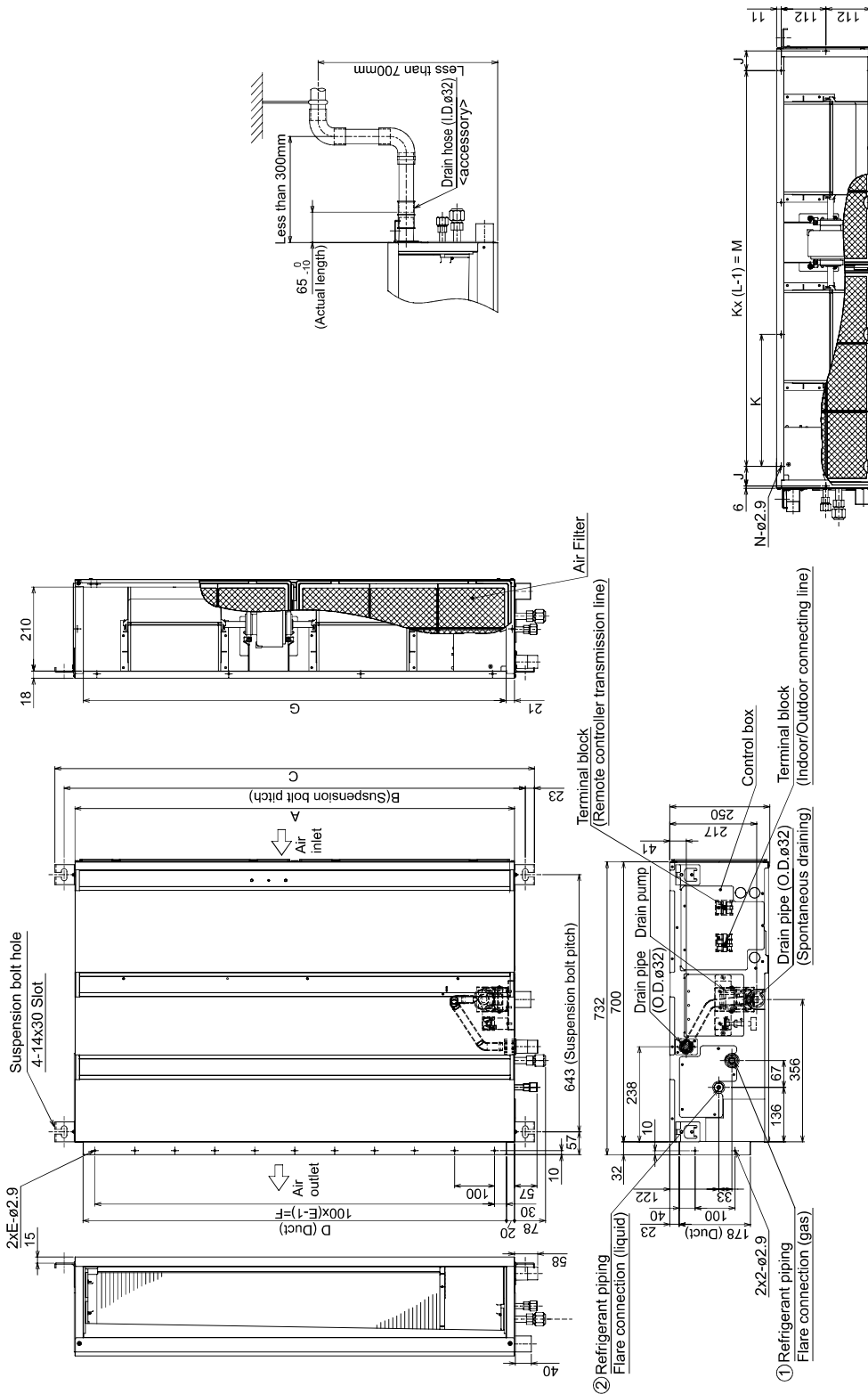


6

OUTLINES & DIMENSIONS

INDOOR UNIT

PEAD-M35, 50, 60, 71, 100, 125, 140JA

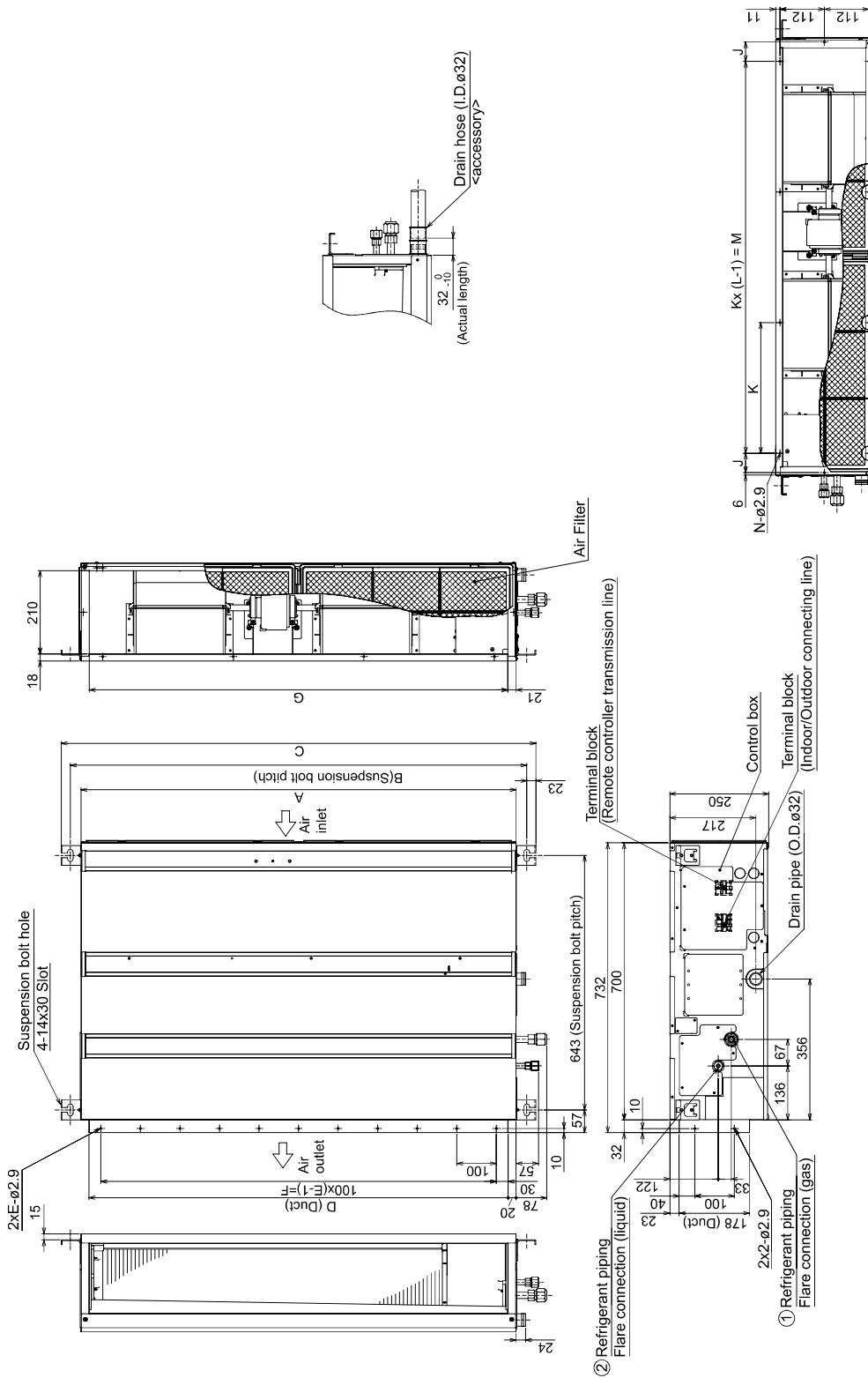


*Setting at shipment

Model	A	B	C	D	E	F	G	H	J	K	L	M	N	① Gas pipe ø12.7	② Liquid pipe ø6.35
PEAD-M35, 50JA	900	954	1000	860	9	800	836	1000	54	260	4	780	10		Outdoor unit (SUZ): ø6.35 Outdoor unit (other): ø9.52
PEAD-M60JA	1100	1154	1200	1060	11	1000	1058	1200	49	330	4	990	10	ø15.88	
PEAD-M71JA	1400	1454	1500	1360	14	1300	1358	1500	54	320	5	1280	12		
PEAD-M100, 125JA	1600	1654	1700	1560	16	1500	1558	1700	54	370	5	1480	12		
PEAD-M140JA															ø9.52

- NOTE
1. Use M10 screw for the Suspension bolt (field supply).
 2. Keep the service space for the maintenance at the bottom.
 3. This chart indicates for PEAD-M60-71-100-125-140JA models, which have 2 fans. PEAD-M35-50JA models have 1 fan.
 4. In case of the inlet duct is used, remove the air filter (supply with the unit), then install the filter (field supply) at suction side.

PEAD-M35, 50, 60, 71, 100, 125, 140JAL



*Setting at shipment

Model	A	B	C	D	E	F	G	H	J	K	L	M	N	① Gas pipe	② Liquid pipe
PEAD-M35, 50JAL	900	954	1000	860	9	800	858	1000	54	260	4	780	10	φ12.7	φ6.35
PEAD-M60JAL	1100	1154	1200	1060	11	1000	1058	1200	49	330	4	990	10	φ15.88	Outdoor unit (SUZ): φ6.35 Outdoor unit (other): φ9.52
PEAD-M71JAL	1400	1454	1500	1360	14	1300	1358	1500	54	320	5	1280	12		
PEAD-M100, 125JAL	1600	1654	1700	1560	16	1500	1558	1700	54	370	5	1480	12		φ9.52

- NOTE
1. Use M10 screw for the Suspension bolt (field supply).
 2. Keep the service space for the maintenance at the bottom.
 3. This chart indicates for PEAD-M60-71-100-125-140JAL models, which have 2 fans. PEAD-M35-50JAL models have 1 fan.
 4. In case of the inlet duct is used, remove the air filter (supply with the unit), then install the filter (field supply) at suction side.