



BATTLE CARD

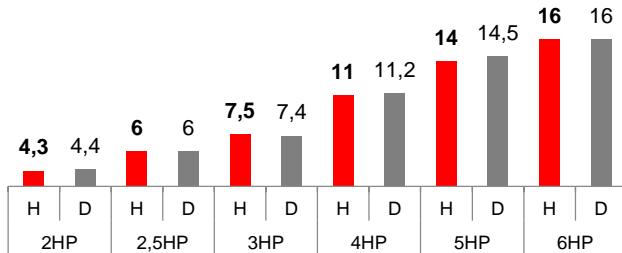
ATW HP integrated tank - Hitachi vs Competitor D

HEATING – 10.2016

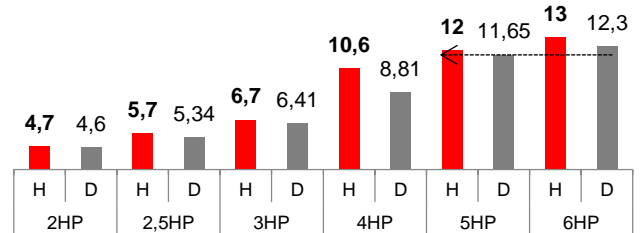
1 HEATING CAPACITIES → HIGH PERFORMANCES

HITACHI

Nominal heating capacity A7/W35 (kW)



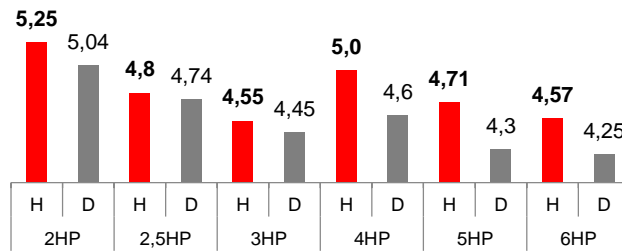
Max heating capacity A-7/W35 (kW)



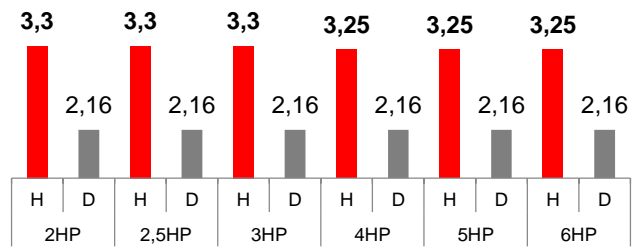
- Analyzing maximum capacities at -7 when heat pump will need to supply more heat, we notice that **all Hitachi units provide more kW**.
- Hitachi units are more performant and this create a big difference for Competitor D 6HP unit that is equivalent to HITACHI 5HP!

2 COP & EER COMPARISONS → HIGH EFFICIENCY

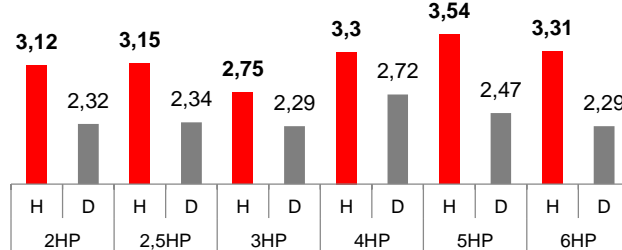
COP A7/W35



COP DHW (200L)



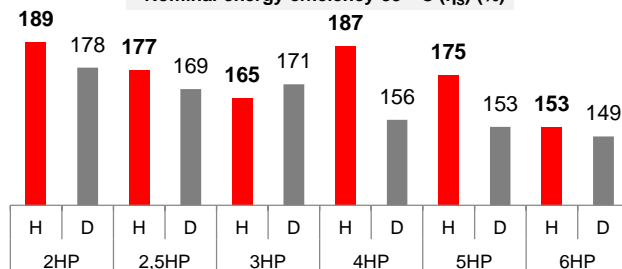
EER A35/W7



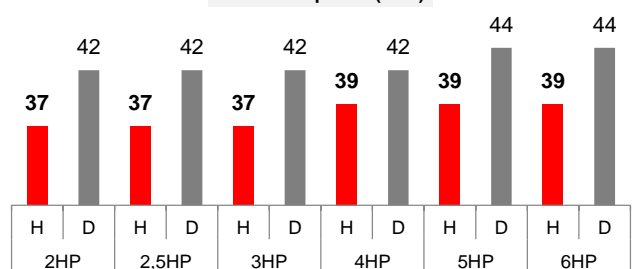
- Yutaki SCombi units are the **most efficient units of the market!**
- Yutaki SCombi is an **economic and efficient solution all year long**. Energy efficiency is ensured for all types of usages: heating, cooling and DHW production.

3 ERP DATAS' COMPARISON → BEST PERFORMANCES & IMPROVED COMFORT

Nominal energy efficiency 35° C (ηs) (%)



IU Sound power (dBA)



- Hitachi units go beyond 2017 regulatory requirements with 4 models already **A+++: best in class performances!**
- Hitachi indoor units are really silent! Every increase of 3 dBA represents a doubling of sound intensity.

4 ADVANCED DESIGN & EFFICIENT ACCESSORIES

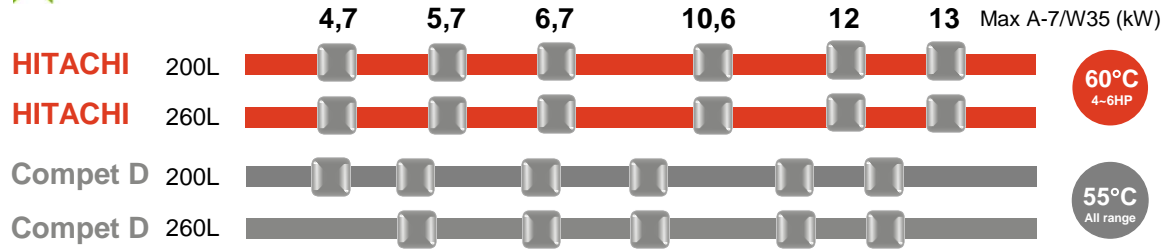
- Hitachi designed the new Yutaki range so that installation becomes **easy, simple & quick** for all installers!
 - Specific outdoor unit for small capacities from **4,3 to 7,5kW** → **-7,5%** footprint vs Competitor D.
 - Hitachi outdoor units are on **average 11kg lighter** than Competitor D.
- 2ND CIRCUIT KIT**
 - Competitor needs 2 water pumps → **double energy consumption**. Additional controller is required for Competitor D, **function is not standard as it is for all YUTAKI**.
- BOILER COMBINATION**
 - On all Yutaki this function is a standard**. For competitor D units an additional PCB is required (194€)



AIR-TO-WATER HEAT PUMP WITH INTEGRATED TANK

HITACHI vs COMPETITOR D

RANGE MAPPING



- HITACHI has the widest range of the market. Available in single and three phases Yutaki SCombi is the best solution on new housing market.

DESIGN



TECHNICAL SPECIFICATIONS

Manufacturer		HITACHI	Competitor D	HITACHI	Competitor D	HITACHI	Competitor D	HITACHI	Competitor D	HITACHI	Competitor D	HITACHI	Competitor D	
Water module reference		RWD-2.0NWE-(200/260)S	EHVH04S18CB3V	RWD-2.5NWE-(200/260)S	EHVH08S18CB3V	RWD-3.0NWE-(200/260)S	EHVH08S18CB3V	RWD-4.0NWE-(200/260)S	EHVH11S18CB3V	RWD-5.0NWE-(200/260)S	EHVH16S18CB3V	RWD-6.0NWE-(200/260)S	EHVH16S18CB3V	
Outdoor unit reference		RAS-2WHVNP	ERLQ004CV3	RAS-2.5WHVNP	ERLQ006CV3	RAS-3WHVNP	ERLQ008CV3	RAS-4WH(V)NPE	ERLQ011CV3	RAS-5WH(V)NPE	ERLQ014CV3	RAS-6WH(V)NPE	ERLQ016CV3	
Indoor unit type		Floor standing	Floor standing	Floor standing	Floor standing	Floor standing	Floor standing	Floor standing	Floor standing	Floor standing	Floor standing	Floor standing	Floor standing	
1 ERP DATA	Nominal energy efficiency 35°C (η _s)	%	189	178	177	169	165	171	187	156	175	153	153	149
	Nominal energy efficiency 55°C (η _s)	%	137	125	130	126	125	126	136	120	133	123	125	119
	Nominal energy efficiency DHW (η _{wh})	%	132	95	132	86,4	132	86,4	130	87,4	130	87,4	130	87,4
	Energy Class 35°C (Average climate)		A+++	A++	A+++	A++	A++	A++	A+++	A++	A+++	A++	A++	A+
	Energy Class 55°C (Average climate)		A++	A++	A++	A++	A++	A++	A++	A+	A++	A+	A++	A+
	Energy Class DHW (Av clim - L cycle)		A+	A	A+	A	A+	A	A+	A	A+	A	A+	A
	Energy Class DHW (Av clim - XL cycle)		A+	-	A+	A	A+	A	A+	A	A+	A	A+	A
	Sound power OU	dB(A)	61	61	63	62	64	62	64	64	65	64	67	66
Sound power IU	dB(A)	37	42	37	42	37	42	39	42	39	44	39	44	
2 HEATING	Nominal heating capacity A7/W35	kW	4,3	4,4	6,0	6,0	7,5	7,4	11,0	11,2	14,0	14,5	16,0	16,0
	COP A7/W35	-	5,25	5,04	4,8	4,74	4,55	4,45	5,0	4,6	4,71	4,3	4,57	4,25
	Max heating capacity A7/W35	kW	7,0	5,12	9,0	8,35	11,0	10,02	15,2	11,38	16,7	14,55	17,8	16,1
	Nominal heating capacity A-7/W35	kW	4,3	4,37	5,3	5,31	5,8	5,46	9,7	8,6	11,5	10	12,0	11,1
	COP A-7/W35	-	2,85	2,81	2,6	2,84	2,57	2,71	2,74	2,75	2,65	2,65	2,57	2,64
	Max heating capacity A-7/W35	kW	4,7	4,6	5,7	5,34	6,7	6,41	10,6	8,81	12,0	11,65	13,0	12,3
	Outlet water temp (Heating)	°C	20-55	15-55	20-55	15-55	20-55	15-55	20-60	15-55	20-60	15-55	20-60	15-55
3 DHW	Tank capacity	L	200	180	200	180	200	180	200	180	200	180	200	180
	Cycle	L	-	-	L	L	L	L	L	L	L	L	L	L
	COP DHW		3,3	2,16	3,3	2,16	3,3	2,16	3,25	2,16	3,25	2,16	3,25	2,16
	Standby power (Pes)	W	37	34	37	38	42	38	42	50	42	50	42	50
	Heat up time	h:mm	01:43	01:35	01:43	01:14	01:43	01:14	01:23	01:03	01:10	01:03	01:10	01:03
	Reference hot water temperature (Θ 'wh)	°C	54	52,5	54	52,5	54	52,5	54	52,5	54	52,5	54	52,5
	Max volume of usable hot water (Vmax)	L	263	225,7	263	225,7	263	225,7	263	225,7	263	225,7	263	225,7
3 DHW	Tank capacity	L	260	-	260	260	260	260	260	260	260	260	260	260
	Cycle	L	XL	-	XL	L	XL	L	XL	L	XL	L	XL	L
	COP DHW		3,4	-	3,4	2,16	3,4	2,16	3,35	2,08	3,35	2,08	3,35	2,08
	Standby power (Pes)	W	41	-	41	38	44	38	44	52	44	52	44	52
	Heat up time	h:mm	02:10	-	02:10	01:49	02:10	01:49	01:44	01:35	01:25	01:35	01:25	01:35
	Reference hot water temperature (Θ 'wh)	°C	54	52,5	54	52,5	54	52,5	54	52,5	54	52,5	54	52,5
	Max volume of usable hot water (Vmax)	L	350	-	350	327,5	350	327,5	350	327,5	350	327,5	350	327,5
4 OTHERS	Refrigerant	-	R410a	R410a	R410a	R410a	R410a	R410a	R410a	R410a	R410a	R410a	R410a	R410a
	Ambient working range (Heating)	°C	-15-25	-25-25	-15-25	-25-25	-15-25	-25-25	-25-25	-25-35	-25-25	-25-35	-25-25	-25-35
	Ambient working range (DHW)	°C	-15-35	-25-35	-15-35	-25-35	-15-35	-25-35	-25-35	-20-35	-25-35	-20-35	-25-35	-20-35
	Back up heater	kW	3	3 (180L)	3	3 (180L) 3/6/9 (260L)	3	3 (180L) 3/6/9 (260L)	6	3 (180L) 3/6/9 (260L)	6	3 (180L) 3/6/9 (260L)	6	3 (180L) 3/6/9 (260L)
5 PHYS DATA	IU dimensions (HxWxD)	mm	1750 x 600 x 733	1732 x 600 x 728	1750 x 600 x 733	1732 x 600 x 728	1750 x 600 x 733	1732 x 600 x 728	1750 x 600 x 733	1732 x 600 x 728	1750 x 600 x 733	1732 x 600 x 728	1750 x 600 x 733	1732 x 600 x 728
	IU weight (200L/260L)	kg	120 / 135	116 / -	120 / 135	116 / 126	121 / 136	117 / 126	124 / 139	117 / 126	126 / 141	117 / 127	126 / 141	117 / 127
	OU dimensions (HxWxD)	mm	600 x 792 x 300	735 x 832 x 307	600 x 792 x 300	735 x 832 x 307	600 x 792 x 300	735 x 832 x 307	1380 x 950 x 370	1345 x 900 x 320	1380 x 950 x 370	1345 x 900 x 320	1380 x 950 x 370	1345 x 900 x 320
	OU weight	kg	43	54	43	56	44	56	103	113	103	113	103	113