

Panasonic PACi NX Elite can cool rooms down to 8 °C

Panasonic PACi Elite offers a high quality and efficient solution for high temperature refrigeration applications for facilities such as wine cellars, food processing facilities and supermarkets.

**COOLING ROOMS
BETWEEN 8 °C WB
AND 24 °C WB**

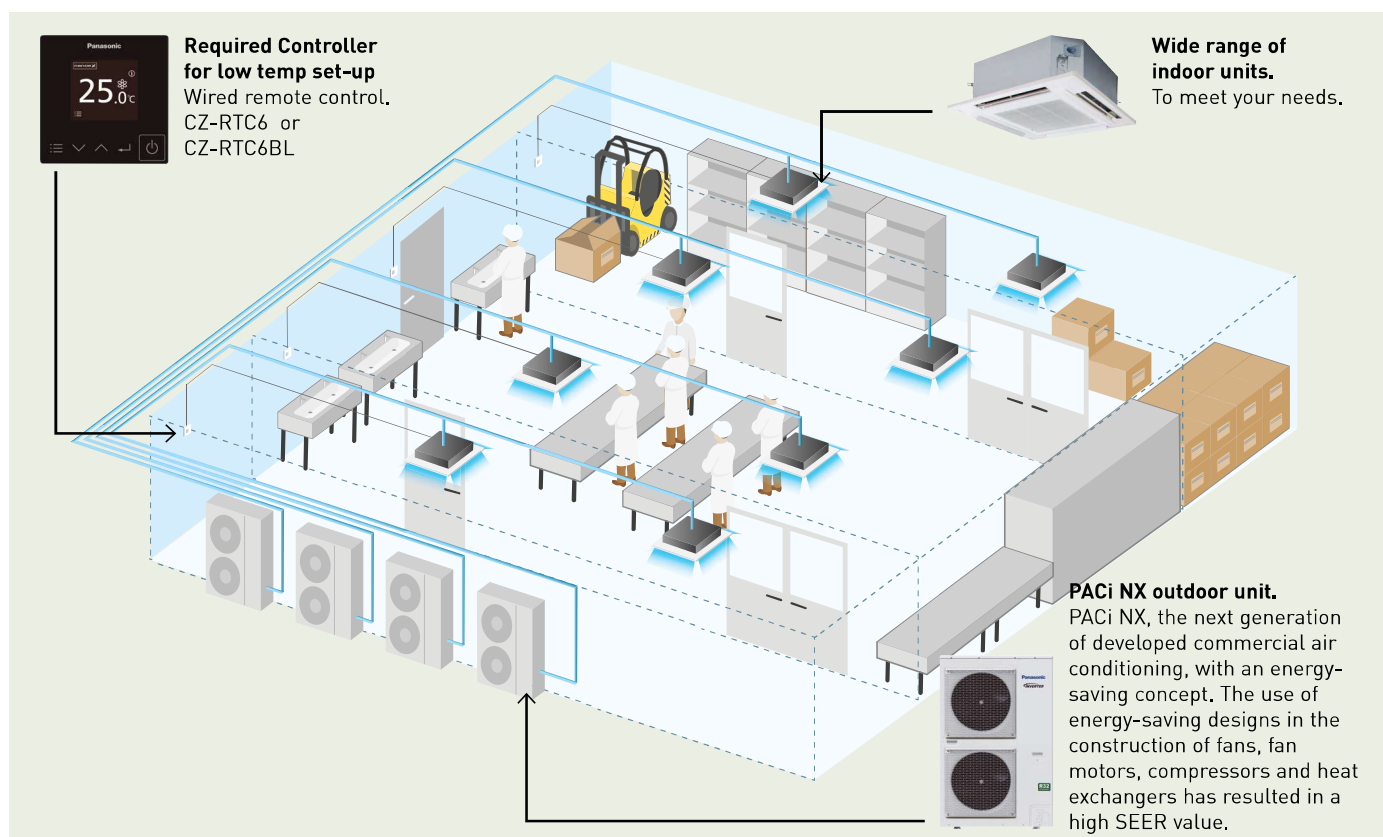


Solutions for cold rooms. Set the room temperature to 8 °C

Complete range from 2,1 to 23,2 kW. This unique solution is perfect for:

Wine cellars, ice cream factories, flower shops, supermarkets, grain stores, food storage, food processing, food distribution, lunchrooms, vegetable processing...

Just like all the indoor units in the PACi NX range, these units are compatible with all Panasonic control and monitoring solutions, which can be scaled from controlling a single zone to monitoring geographically distributed facilities.



- Flexibility with different type of indoors
- Benefits of hydroxyl radicals
- Out of the box solution from Panasonic. Outdoor, indoor, controller comes as package
- Provides wide scale of control options (individual, central, cloud)
- Redundancy for 2 systems with the standard wired controller and up to 3 systems with PAW-PCR3 optional redundancy controller



Possible outdoor / indoor units combinations

Cooling capacity	Single						Twin		
	3,5 kW	4,9 kW	5,8 kW	6,9 kW	9,3 kW	11,6 kW	13,6 kW	18,5 kW	23,2 kW
Outdoor unit	U-36PZH3E5	U-50PZH3E5	U-60PZH3E5	U-71PZH3E5/8	U-100PZH3E5/8	U-125PZH3E5/8	U-140PZH3E5/8	U-200PZH2E8	U-250PZH2E8
Wall-mounted	S-6010PK3E	S-6010PK3E	S-6010PK3E	S-6010PK3E S-6010PK3E	S-6010PK3E S-6010PK3E	S-6010PK3E S-6010PK3E	S-6010PK3E + S-6010PK3E	—	—
4 way 90x90 cassette	S-6071PU3E	S-6071PU3E	S-6071PU3E	S-1014PU3E	S-1014PU3E	S-1014PU3E	S-1014PU3E + S-1014PU3E	S-1014PU3E + S-1014PU3E	S-1014PU3E + S-1014PU3E
Ceiling	S-6071PT3E	S-6071PT3E	S-1014PT3E	S-1014PT3E	S-1014PT3E	S-1014PT3E	S-1014PT3E + S-1014PT3E	S-1014PT3E + S-1014PT3E	S-1014PT3E + S-1014PT3E
Adaptive ducted unit	S-6071PF3E	S-6071PF3E	S-6071PF3E	S-1014PF3E	S-1014PF3E	S-1014PF3E	S-1014PF3E + S-1014PF3E	S-1014PF3E + S-1014PF3E	S-1014PF3E + S-1014PF3E

Wine cellars and special low temperature rooms

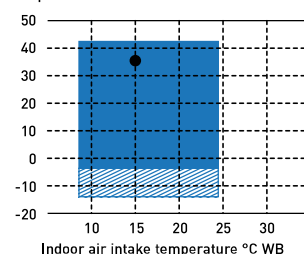
One of the main features of the PACi NX series is the possibility of adjusting the product for special applications, not just for regular heating and cooling applications. The purpose of this product information is to explain in detail these special applications that need a cooling operation to maintain the room temperature at +8 ~ +24 °C WB (or +10 ~ +30 °C DB). In order to do this in terms of enthalpy, the indoor unit needs to be overdimensioned and certain parameters need to be adjustable.

Temperature range for wine cellar

	Indoor	Outdoor
Cooling operation	+8 ~ +24 °C WB	-5 [-15] ~ 43 °C DB

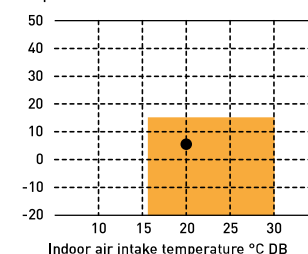
Temperature range – temperature range for wine cellar.

In cooling. Outdoor air intake temperature °C DB



Only allowed after installation of wind and snow vents.

In heating. Outdoor air intake temperature °C WB



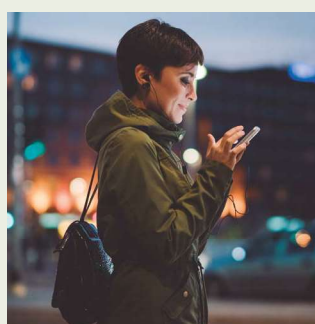
Area where cooling and heating capacity is established for this purpose.

Bringing nature's balance indoors

nanoe™ X, technology with the benefits of hydroxyl radicals.



nanoe™ X: improving protection 24/7



Acts to clean your air, so that the indoor environment can be a cleaner and pleasant place to be all day long. nanoe™ X works together with heating or cooling function when the during the day and can work independently when the area is not occupied. Give the air conditioning the strength to increase the protection of your indoor spaces with nanoe™ X technology and convenient control via the Panasonic Comfort Cloud App.

Cleans the air when you are away.

Leave the nanoe™ mode ON to inhibit certain pollutants and deodorise before you return home.

Improves your environment when you are at home.

Enjoy a cleaner, comfortable space with loved ones.



Capacity to inhibit pollutants

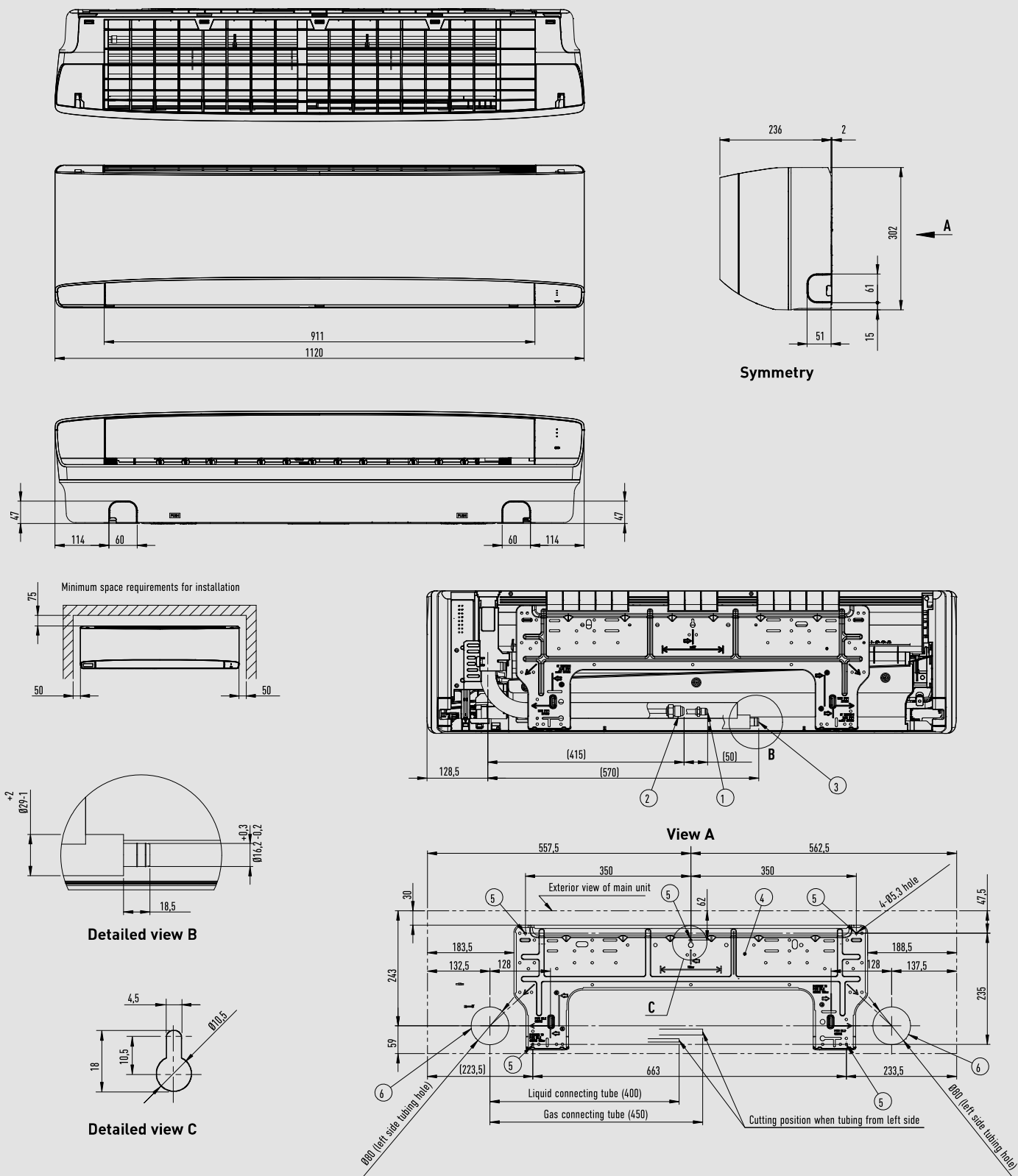


Bacteria and viruses



Mould

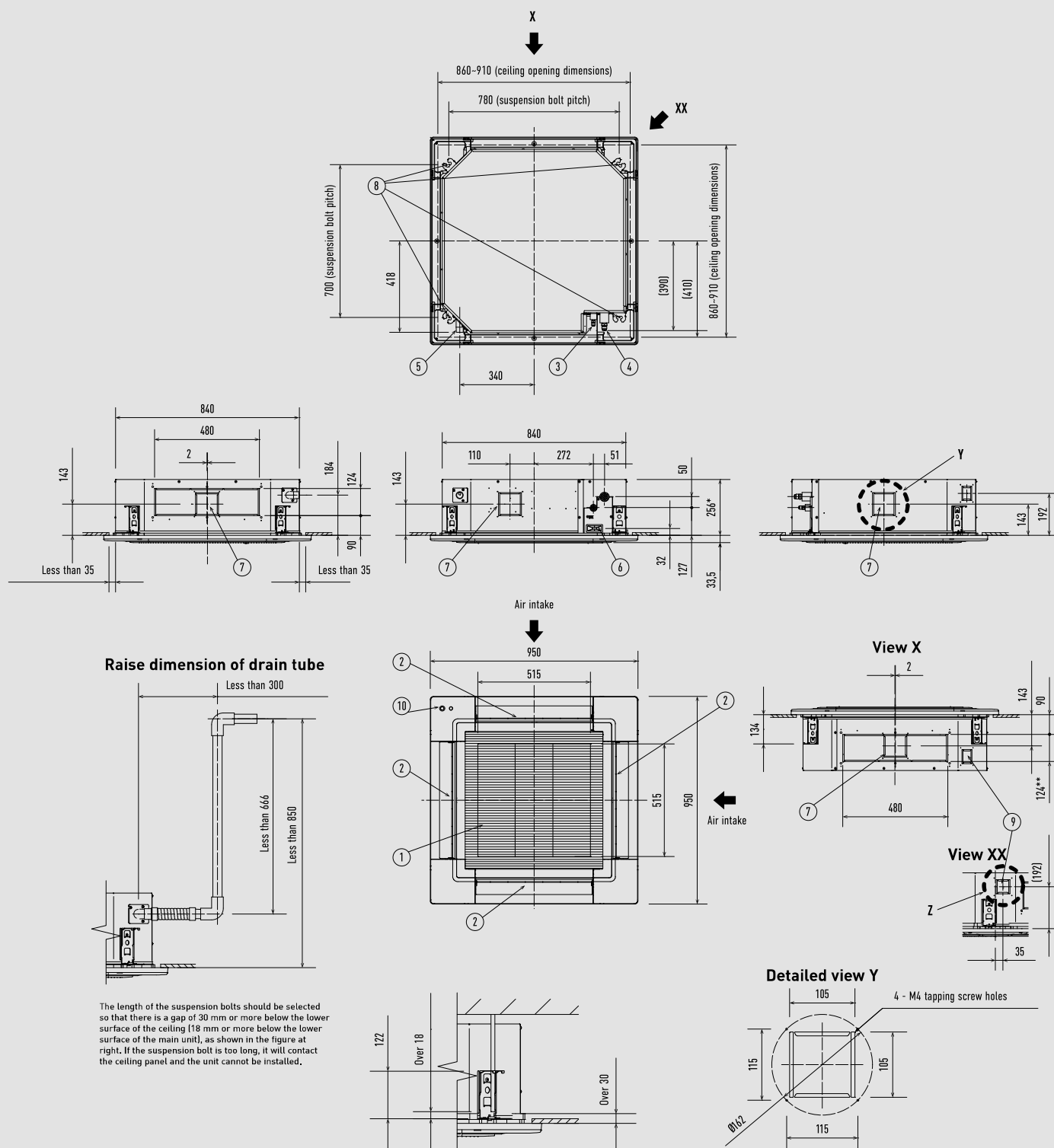
PACi NX Series wall-mounted



Type	S-3650PK3E	S-6010PU3E
1 Refrigerant tubing (liquid)	Ø6.35 (flared)	Ø9.52 (flared) ¹⁾
2 Refrigerant tubing (gas)	Ø12.70 (flared)	60: Ø15.88 (flared) ²⁾ 71: Ø15.88 (flared) 100: Ø15.88 (flared)
3 Drain hose		
4 Rear panel		
5 Rear panel fixing holes (Ø5.3 holes or as shown in figure "C")		
6 Tubing and wiring holes (Ø80)		

1) When connecting with U-60PZ3E5, U-71PZ3E5 or U-60PZH3E5, connect the liquid socket tube (Ø9.52 - Ø6.35) to the liquid tubing side indoor unit.
2) When connecting with U-60PZ3E5 or U-60PZH3E5, connect the gas socket tube (Ø15.88 - Ø12.7) to the gas tubing side indoor unit.

PACi NX Series 4 way 90x90 cassette



Type	S-3650PU3E	S-6071PU3E	S-1014PU3E
1 Air intake			
2 Discharge outlet			
3 Refrigerant tubing (liquid)	Ø6.35 (flared)	Ø9.52 (flared) ¹⁾	Ø9.52 (flared)
4 Refrigerant tubing (gas)	Ø12.70 (flared)	60: Ø15.88 (flared) ²⁾ 71: Ø15.88 (flared)	Ø15.88 (flared)
5 Drain tube connection port VP25		Outer diameter Ø32	
6 Power supply port			
7 Suspension bolt hole		4-12x30 elongated hole	
8 Fresh air intake duct connection port		Ø100 ³⁾	
9 Suspension bolt hole		4-12x30 elongated hole	
10 Econavi sensor (only CZ-KPU3A or CZ-KPU3AW)			

1) When connecting with U-60PZ3E5, U-71PZ3E5 or U-60PZH3E5, connect the liquid socket tube (Ø9.52 - Ø6.35) to the liquid tubing side indoor unit.

2) When connecting with U-60PZ3E5 or U-60PZH3E5, connect the gas socket tube (Ø15.88 - Ø12.7) to the gas tubing side indoor unit.

3) Necessary to attach duct connecting flange (field supply).

Filter dimension: 520 x 520 x 15 mm.

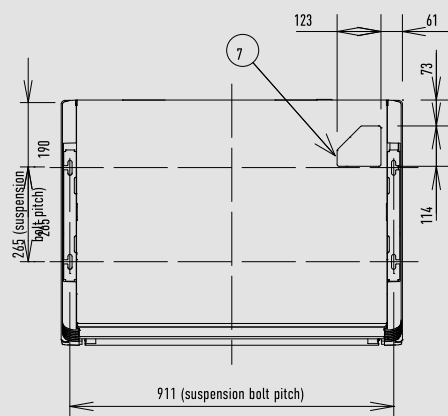
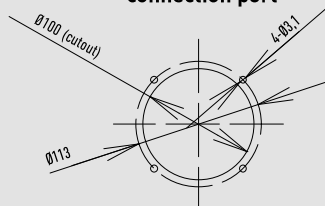
* 319 mm for S-1014PU3E.

** 187 mm for S-1014PU3E.

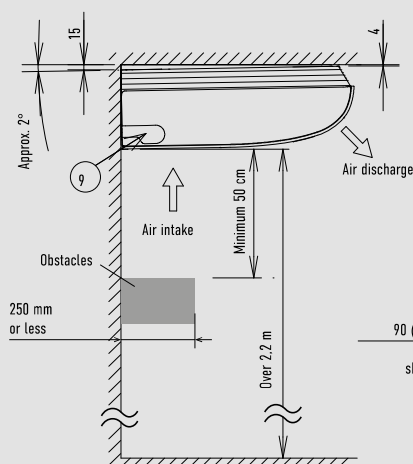
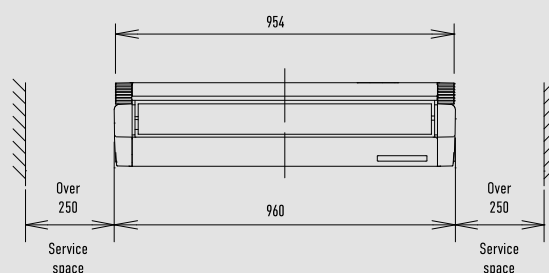
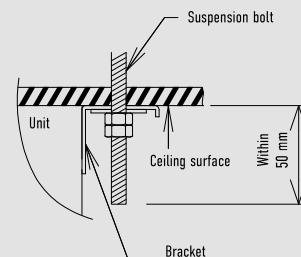
Unit: mm

PACi NX Series ceiling (S-3650PT3E)

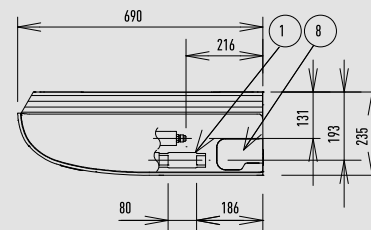
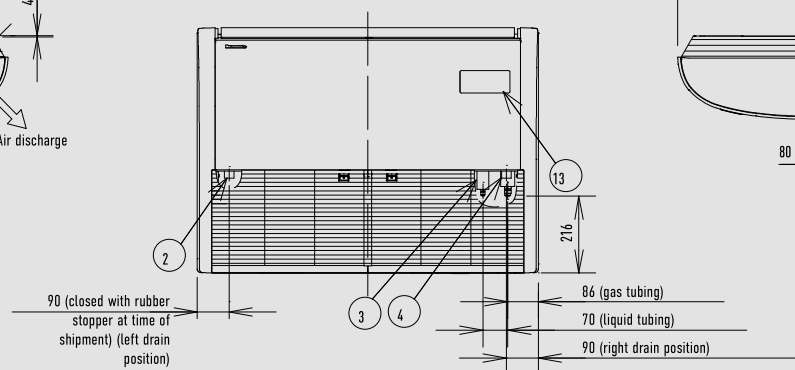
Detailed view of intaking outside air duct connection port



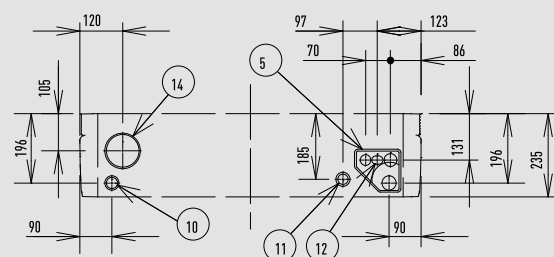
Distance of each exposed bolt must be of equal length within 50 mm.



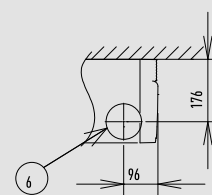
Side view



Hole position of indoor unit rear-side (figure shows view from front)



Tubing hole position on wall surface (figure shows view from front)



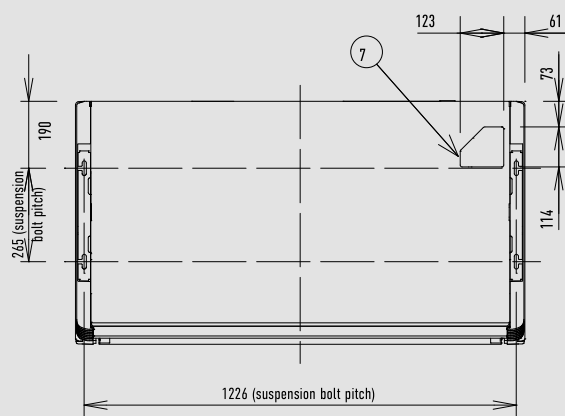
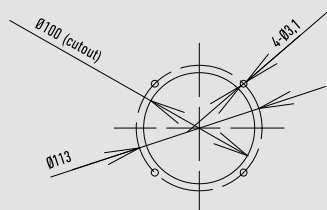
1	Drain port VP20	Inside diameter Ø26 mm, drain hose supplied
2	Left drain position	
3	Refrigerant tubing (liquid)	Ø6.35mm (flared)
4	Refrigerant tubing (gas)	Ø12.7mm (flared)
5	Cover of rear tubing hole	
6	Tubing hole on wall surface	Ø100 mm
7	Upper side tubing port	
8	Right side drain hose outlet port (cutout)	
9	Left side drain hose outlet port (cutout)	
10	Left-rear side drain hose outlet port (cutout)	
11	Power inlet port	
12	Remote control wiring and inter-unit wiring inlet port	
13	Wireless remote controller receiver installation location	
14	Outside air intake duct connection port	Ø100 mm (cutout)

Filter dimension: 421 x 250 x 16 mm x 2 pcs.

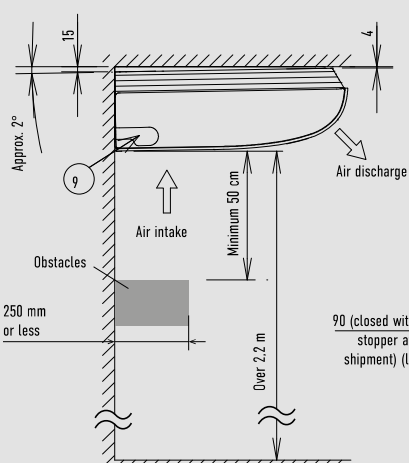
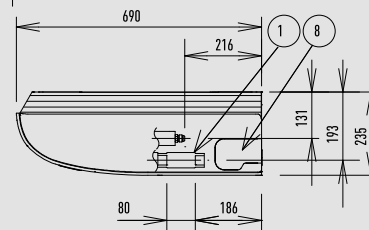
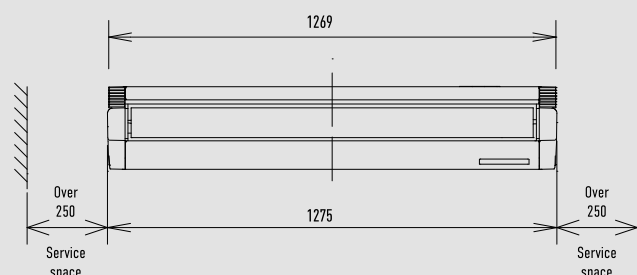
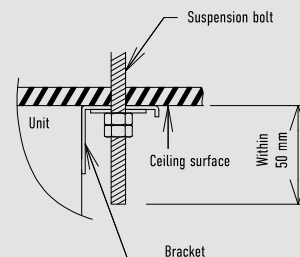
Unit: mm

PACi NX Series ceiling (S-6071PT3E)

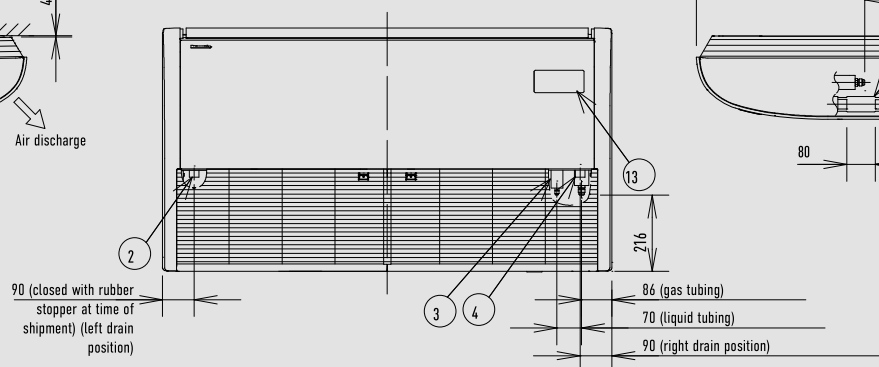
Detailed view of intaking outside air duct connection port



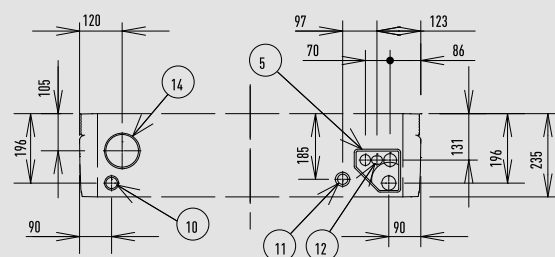
Distance of each exposed bolt must be of equal length within 50 mm.



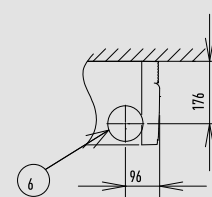
Side view



Hole position of indoor unit rear-side (figure shows view from front)



Tubing hole position on wall surface (figure shows view from front)



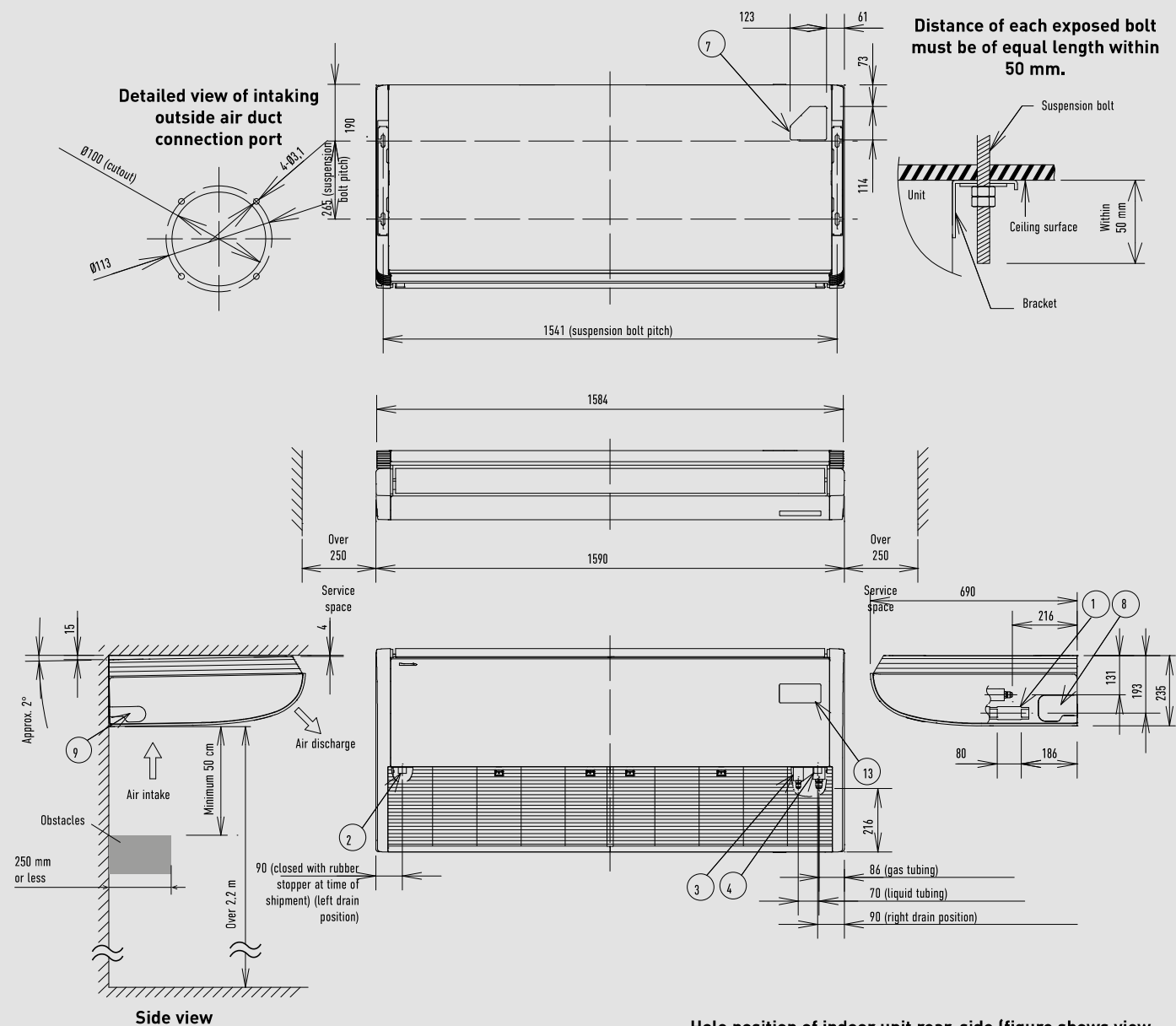
1	Drain port VP20	Inside diameter Ø26 mm, drain hose supplied
2	Left drain position	
3	Refrigerant tubing (liquid)	Ø9.52 (flared) ¹⁾
4	Refrigerant tubing (gas)	Ø15.88 (flared) ²⁾
5	Cover of rear tubing hole	
6	Tubing hole on wall surface	Ø100 mm
7	Upper side tubing port	
8	Right side drain hose outlet port (cutout)	
9	Left side drain hose outlet port (cutout)	
10	Left-rear side drain hose outlet port (cutout)	
11	Power inlet port	
12	Remote control wiring and inter-unit wiring inlet port	
13	Wireless remote controller receiver installation location	
14	Outside air intake duct connection port	Ø100 mm (cutout)

1) When connecting with U-60PZ3E5, U-71PZ3E5 or U-60PZH3E5, connect the liquid socket tube (Ø9.52 - Ø6.35) to the liquid tubing side indoor unit.
2) When connecting with U-60PZ3E5 or U-60PZH3E5, connect the gas socket tube (Ø15.88 - Ø12.7) to the gas tubing side indoor unit.

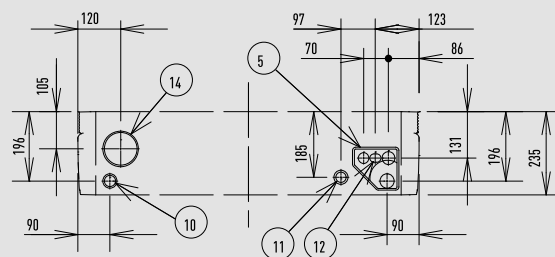
Filter dimension: 579 x 250 x 16 mm x 2 pcs.

Unit: mm

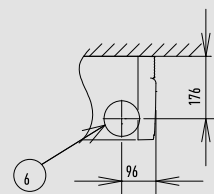
PACi NX Series ceiling (S-1014PT3E)



Hole position of indoor unit rear-side (figure shows view from front)



Tubing hole position on wall surface (figure shows view from front)

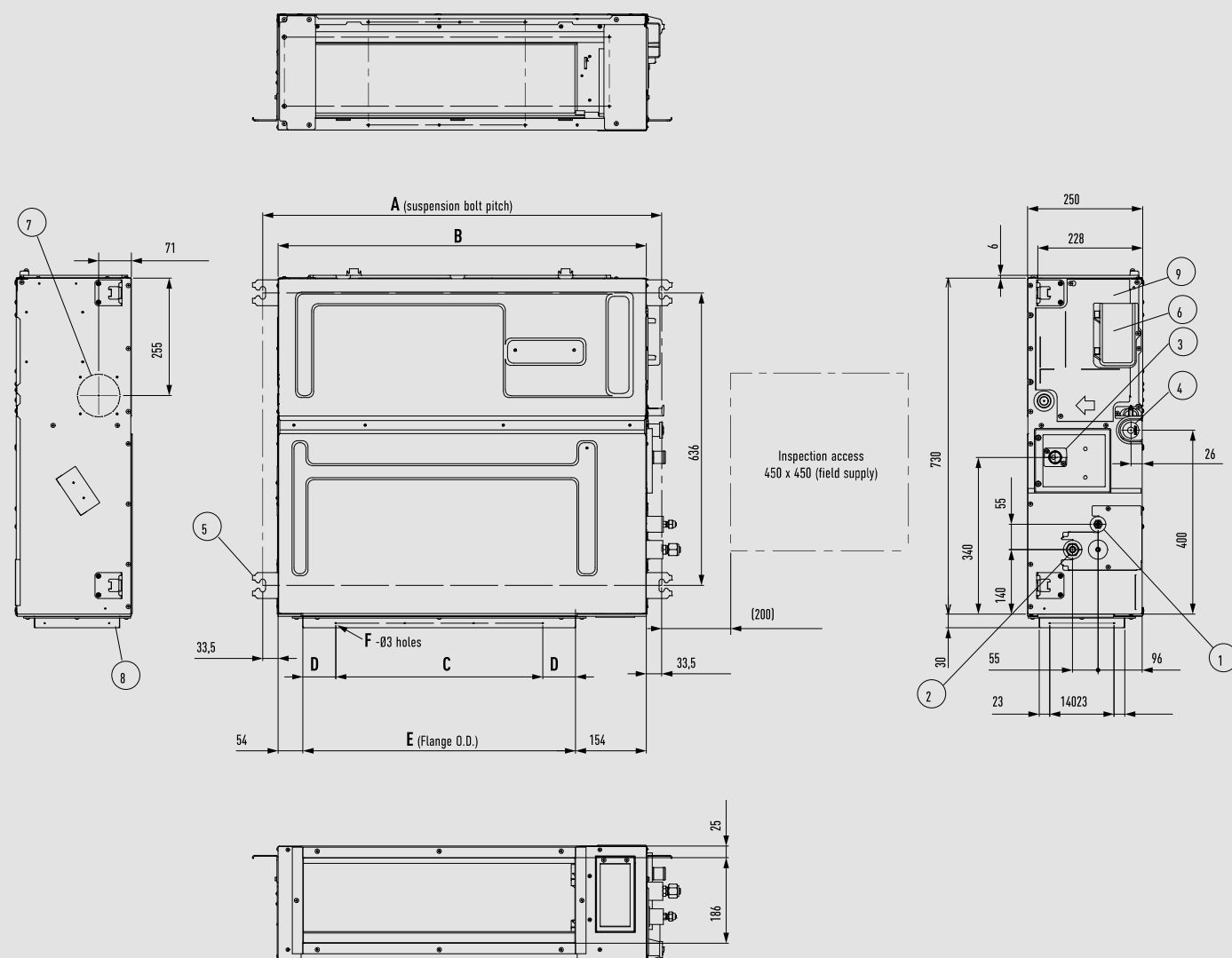


1	Drain port VP20	Inside diameter Ø26 mm, drain hose supplied
2	Left drain position	
3	Refrigerant tubing (liquid)	Ø9.52 (flared)
4	Refrigerant tubing (gas)	Ø15.88 (flared)
5	Cover of rear tubing hole	
6	Tubing hole on wall surface	Ø100 mm
7	Upper side tubing port	
8	Right side drain hose outlet port (cutout)	
9	Left side drain hose outlet port (cutout)	
10	Left-rear side drain hose outlet port (cutout)	
11	Power inlet port	
12	Remote control wiring and inter-unit wiring inlet port	
13	Wireless remote controller receiver installation location	
14	Outside air intake duct connection port	Ø100 mm (cutout)

Filter dimension: 736 x 250 x 16 mm x 2 pcs.

Unit: mm

PACi NX Series adaptive ducted unit



Type	A	B	C	D	E	F
	mm	mm	mm	mm	mm	Q'ty
S-3650PF3E	867	800	450 (pitch 150 x 3)	71	592	12
S-6071PF3E	1067	1000	750 (pitch 150 x 5)	21	792	16
S-1014PF3E	1467	1400	1050 (pitch 150 x 7)	71	1192	20

Type	S-3650PF3E	S-6071PF3E	S-1014PF3E
1 Refrigerant tubing (liquid)	Ø6,35 (flared)	Ø9,52 (flared) ¹⁾	Ø9,52 (flared)
2 Refrigerant tubing (gas)	Ø12,70 (flared)	60: Ø15,88 (flared) ²⁾ 71: Ø15,88 (flared)	Ø15,88 (flared)
3 Upper drain port VP20	Ø26 (200 mm flexible hose supplied)		
4 Suspension lug	4-12x30		
5 Power supply port			
6 Bottom drain port VP20	Ø26 mm		
7 Fresh air intake duct connection port	Ø100 ³⁾		
8 Flange for flexible air outlet duct			
9 Electrical component box			

1) When connecting with U-60PZ3E5, U-71PZ3E5 or U-60PZH3E5, connect the liquid socket tube (Ø9,52 - Ø6,35) to the liquid tubing side indoor unit.

2) When connecting with U-60PZ3E5 or U-60PZH3E5, connect the gas socket tube (Ø15,88 - Ø12,7) to the gas tubing side indoor unit.

3) Necessary to attach duct connecting flange (field supply).

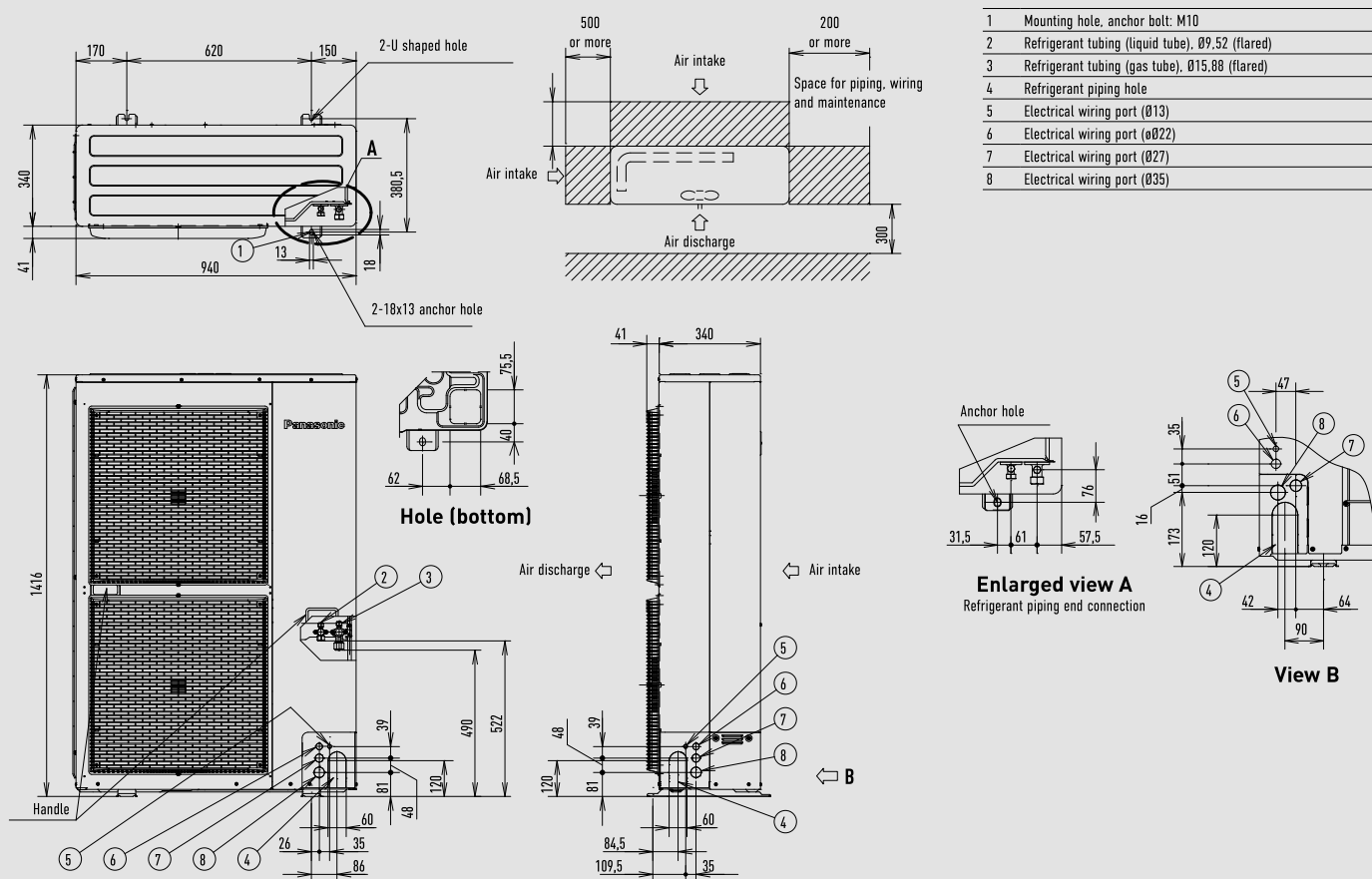
Filter dimension: 520 x 520 x 15 mm.

* 319 mm for S-1014PU3E.

** 187 mm for S-1014PU3E.

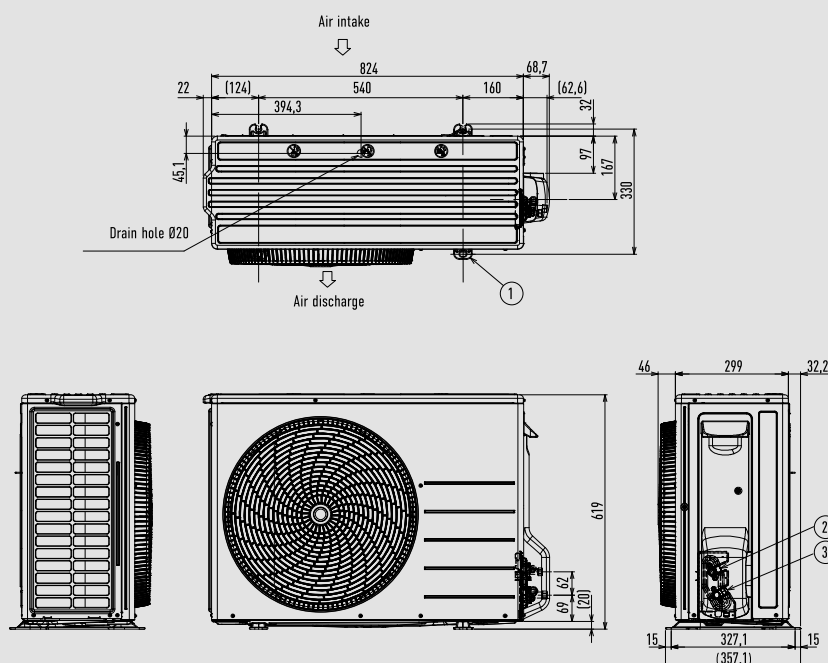
Unit: mm

PACi NX Series Elite outdoor unit from 10,0 to 14,0 kW



Unit: mm

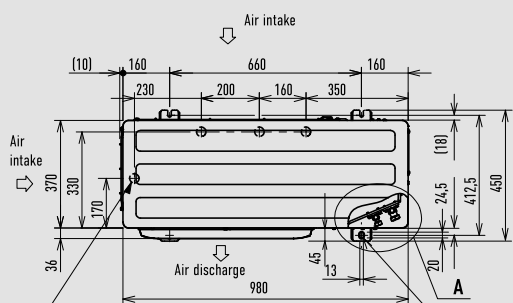
PACi NX Series Standard outdoor unit 3,6 and 5,0 kW



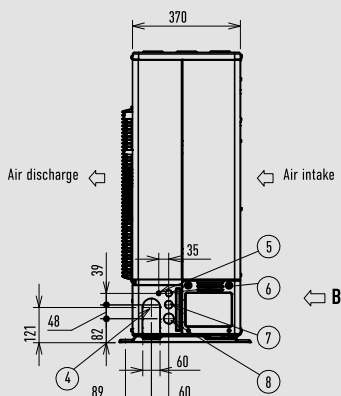
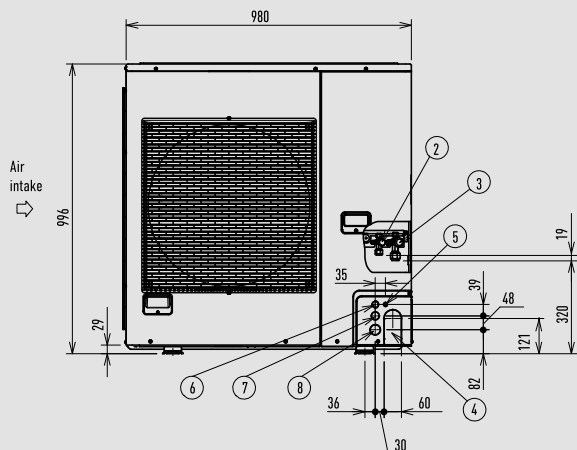
1	Mounting hole (4-R6,5), anchor bolt: M10
2	Refrigerant tubing (liquid tube), Ø6,35 (flared)
3	Refrigerant tubing (gas tube), Ø12,70 (flared)

Unit: mm

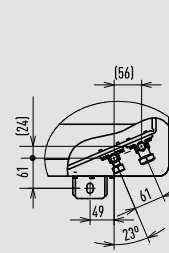
PACi NX Series Standard outdoor unit from 10,0 to 14,0 kW



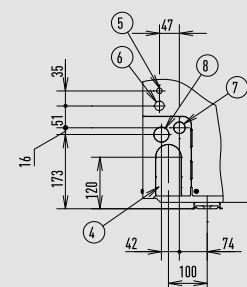
4xØ32 holes (holes for drain). When using a drain pipe, install the drain socket (field supply) on to the drain hole. Seal the other drain hole with the rubber cap



1	Mounting hole, anchor bolt: M10
2	Refrigerant tubing (liquid tube), Ø9.52 (flared)
3	Refrigerant tubing (gas tube), Ø15.88 (flared)
4	Refrigerant piping hole
5	Electrical wiring port (Ø13)
6	Electrical wiring port (øØ22)
7	Electrical wiring port (Ø27)
8	Electrical wiring port (Ø35)



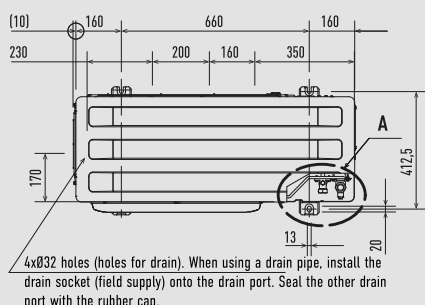
View A



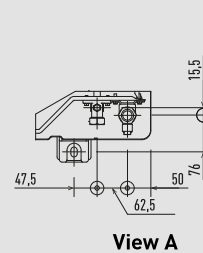
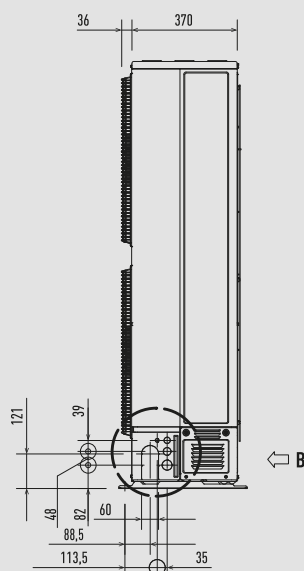
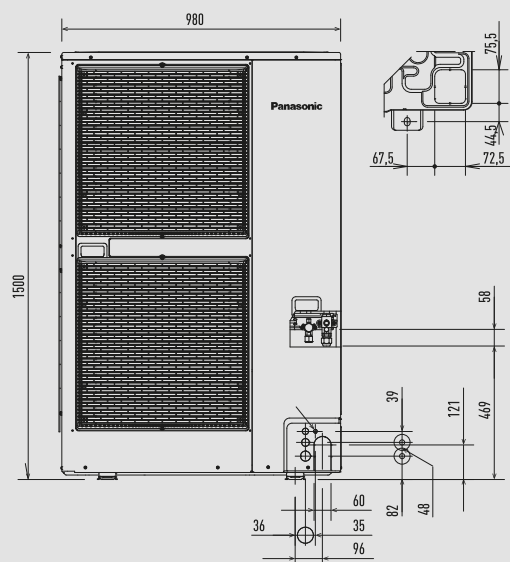
View B

Unit: mm

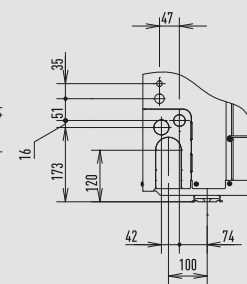
Big PACi outdoor unit 20,0-25,0 kW



4xØ32 holes (holes for drain). When using a drain pipe, install the drain socket (field supply) onto the drain port. Seal the other drain port with the rubber cap.



View A



View B

Unit: mm