

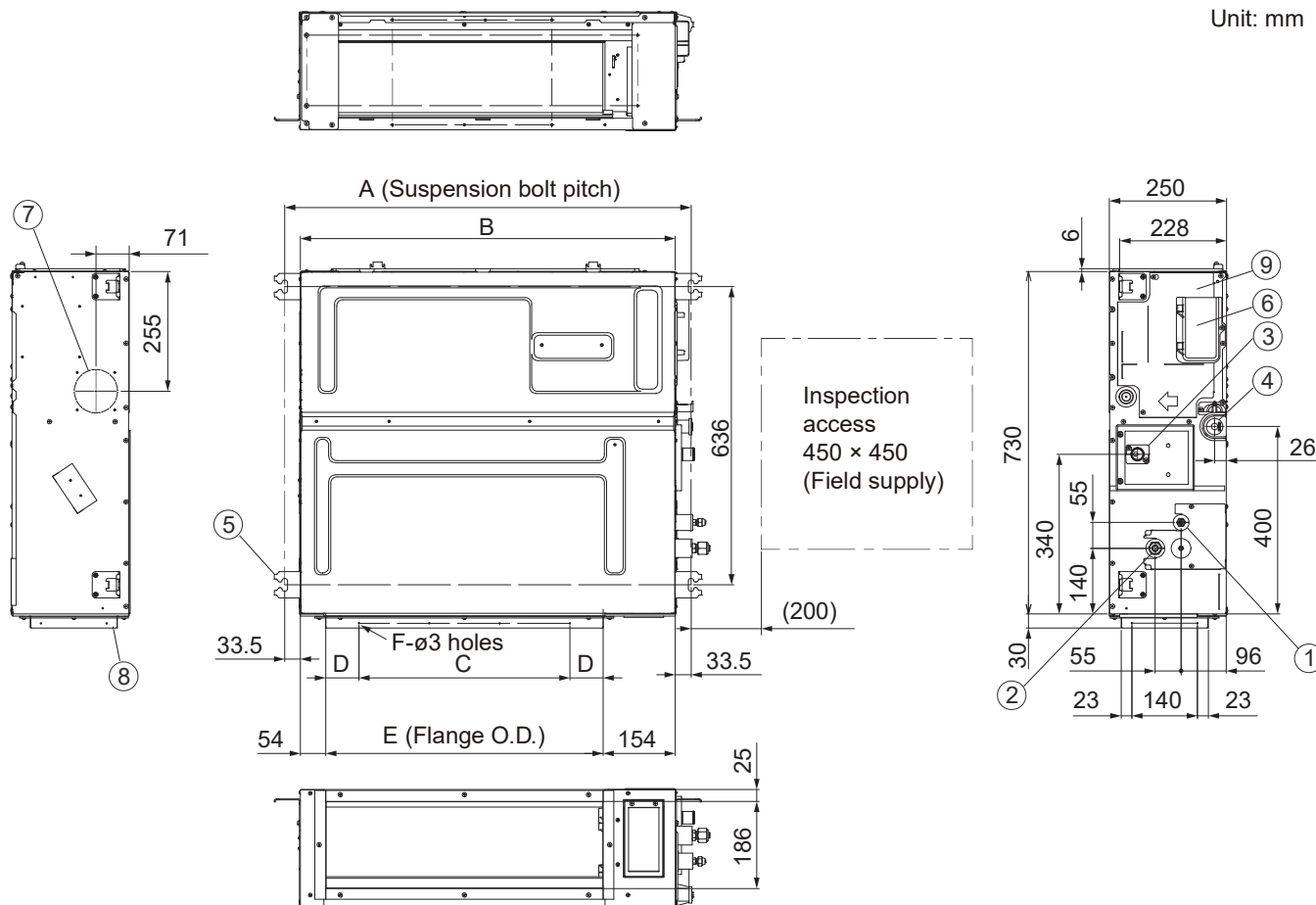
5. Middle Static Pressure Duct (Type F3)

5-3. Dimensional Data

Indoor unit : S-15MF3E5B, S-22MF3E5B, S-28MF3E5B, S-36MF3E5B, S-45MF3E5B, S-56MF3E5B, S-60MF3E5B, S-73MF3E5B, S-90MF3E5B, S-106MF3E5B, S-140MF3E5B, S-160MF3E5B

Type	A	B	C	D	E	F
	mm	mm	mm	mm	mm	Q'ty
S-15MF3E5B, S-22MF3E5B, S-28MF3E5B, S-36MF3E5B, S-45MF3E5B, S-56MF3E5B	867	800	450 (Pitch 150 × 3)	71	592	12
S-60MF3E5B, S-73MF3E5B, S-90MF3E5B	1,067	1,000	750 (Pitch 150 × 5)	21	792	16
S-106MF3E5B, S-140MF3E5B, S-160MF3E5B	1,467	1,400	1,050 (Pitch 150 × 7)	71	1,192	20

Unit: mm



4

Refrigerant tubing joint (liquid tube)	
①	ø6.35 (flared) S-15MF3E5B, S-22MF3E5B, S-28MF3E5B, S-36MF3E5B, S-45MF3E5B, S-56MF3E5B, S-60MF3E5B, S-73MF3E5B, S-90MF3E5B
	ø9.52 (flared) S-106MF3E5B, S-140MF3E5B, S-160MF3E5B
Refrigerant tubing joint (gas tube)	
②	ø12.7 (flared) S-15MF3E5B, S-22MF3E5B, S-28MF3E5B, S-36MF3E5B, S-45MF3E5B, S-56MF3E5B, S-60MF3E5B, S-73MF3E5B, S-90MF3E5B
	ø15.88 (flared) S-106MF3E5B, S-140MF3E5B, S-160MF3E5B
③	Upper drain port VP20 (ø26 mm) 200 mm flexible hose supplied
④	Bottom drain port VP20 (ø26 mm)
⑤	Suspension lug (4 – 12 × 30 mm)
⑥	Power supply outlet
⑦	Fresh air intake port (ø100 mm)*
⑧	Flange for flexible air outlet duct
⑨	Electrical component box

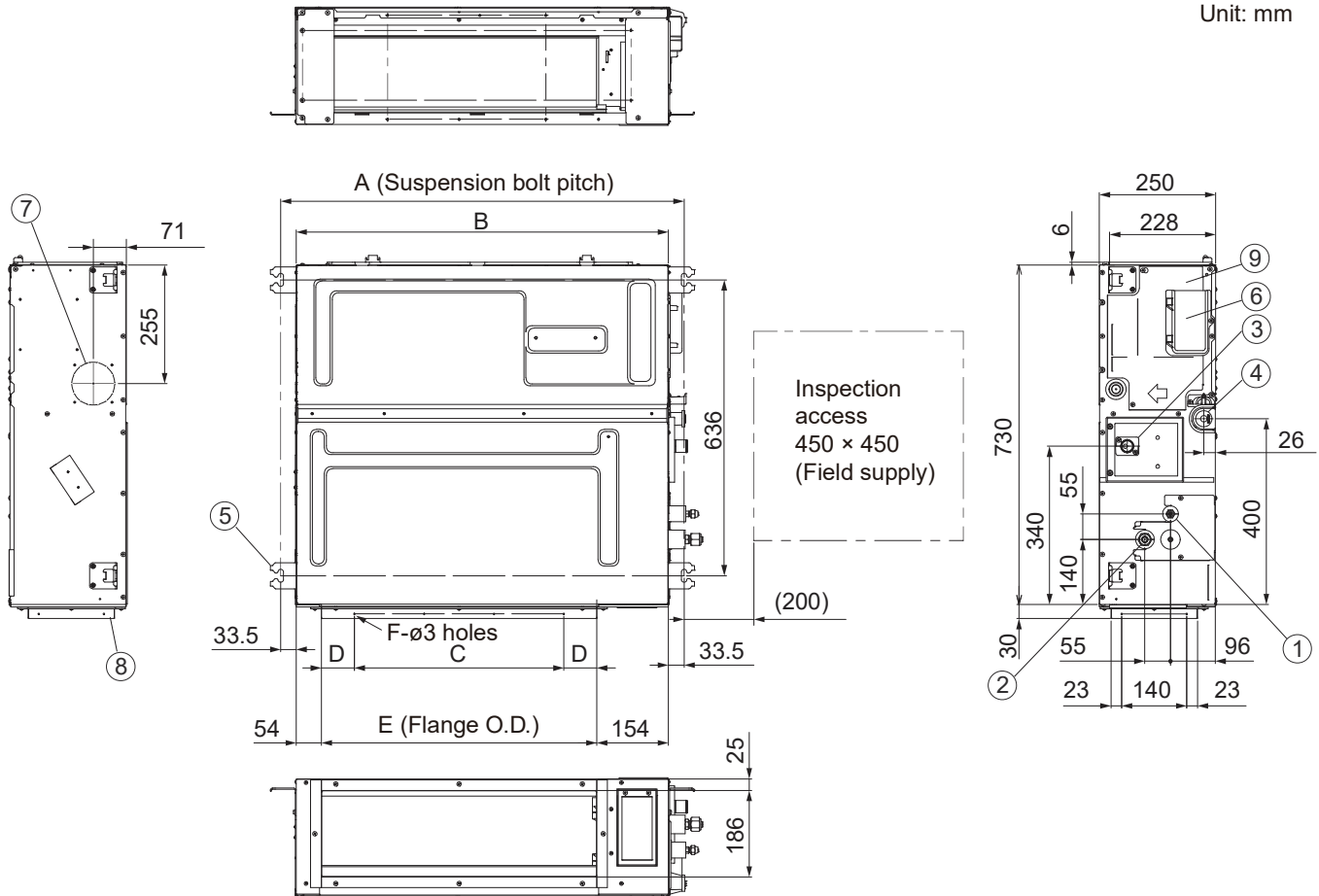
* Necessary to attach duct connecting flange (field supply).

5. Middle Static Pressure Duct (Type F3)

Indoor unit : S-15MF3E5A, S-22MF3E5A, S-28MF3E5A, S-36MF3E5A, S-45MF3E5A, S-56MF3E5A, S-60MF3E5A, S-73MF3E5A, S-90MF3E5A, S-106MF3E5A, S-140MF3E5A, S-160MF3E5A

Type	A	B	C	D	E	F
	mm	mm	mm	mm	mm	Q'ty
S-15MF3E5A, S-22MF3E5A, S-28MF3E5A, S-36MF3E5A, S-45MF3E5A, S-56MF3E5A	867	800	450 (Pitch 150 × 3)	71	592	12
S-60MF3E5A, S-73MF3E5A, S-90MF3E5A	1,067	1,000	750 (Pitch 150 × 5)	21	792	16
S-106MF3E5A, S-140MF3E5A, S-160MF3E5A	1,467	1,400	1,050 (Pitch 150 × 7)	71	1,192	20

Unit: mm



4

①	Refrigerant tubing joint (liquid tube)	
	ø6.35 (flared)	S-15MF3E5A, S-22MF3E5A, S-28MF3E5A, S-36MF3E5A, S-45MF3E5A, S-56MF3E5A
	ø9.52 (flared)	S-60MF3E5A, S-73MF3E5A, S-90MF3E5A, S-106MF3E5A, S-140MF3E5A, S-160MF3E5A
②	Refrigerant tubing joint (gas tube)	
	ø12.7 (flared)	S-15MF3E5A, S-22MF3E5A, S-28MF3E5A, S-36MF3E5A, S-45MF3E5A, S-56MF3E5A
	ø15.88 (flared)	S-60MF3E5A, S-73MF3E5A, S-90MF3E5A, S-106MF3E5A, S-140MF3E5A, S-160MF3E5A
③	Upper drain port VP20 (ø26 mm) 200 mm flexible hose supplied	
④	Bottom drain port VP20 (ø26 mm)	
⑤	Suspension lug (4 – 12 × 30 mm)	
⑥	Power supply outlet	
⑦	Fresh air intake port (ø100 mm)*	
⑧	Flange for flexible air outlet duct	
⑨	Electrical component box	

* Necessary to attach duct connecting flange (field supply).