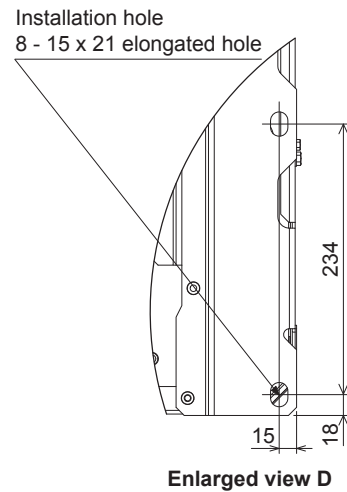
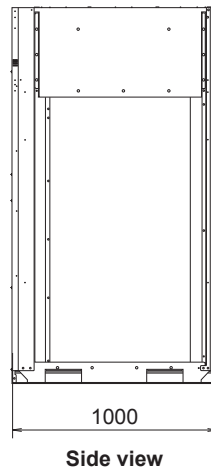
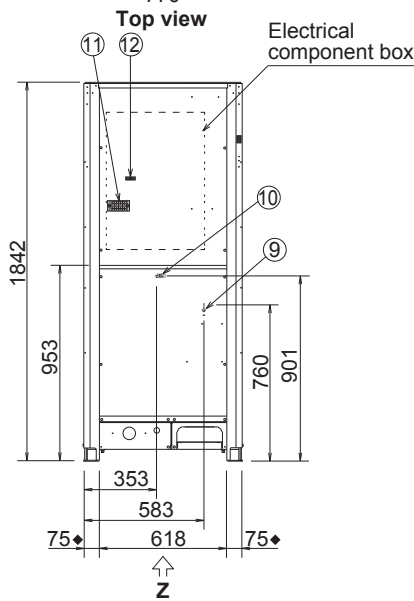
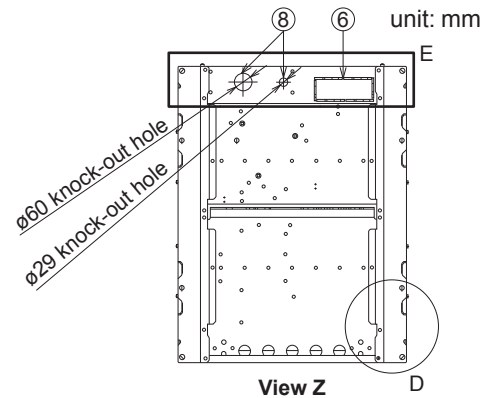
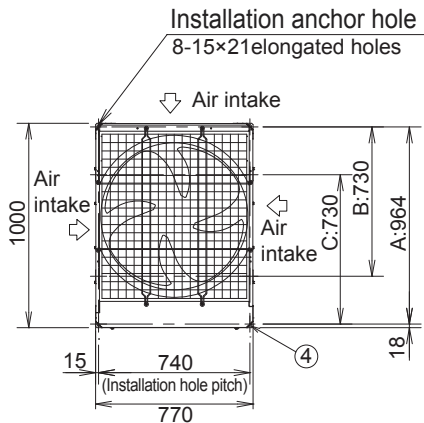


1. Outdoor Unit

1-2. Dimensional Data

U-8ME2E8, U-10ME2E8

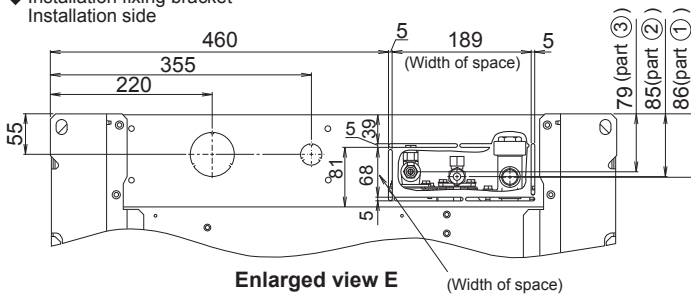


Front view

Side view

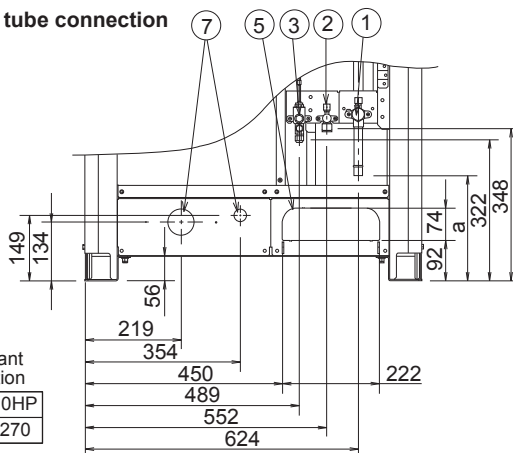
Enlarged view D

◆ Installation fixing bracket
Installation side



Enlarged view E

Position of refrigerant tube connection



Dimension of refrigerant tube connecting position

Types of unit	8HP	10HP
a	240	270

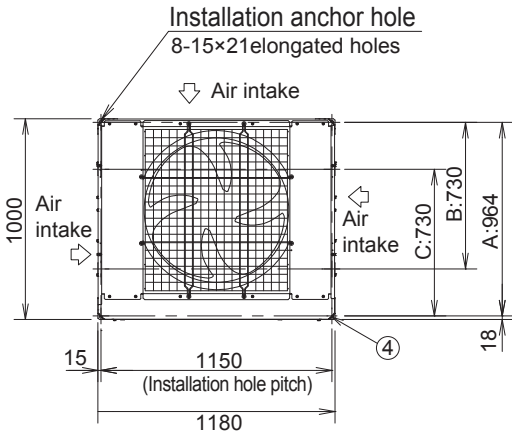
According to the installation site, you may choose the setting position in the depth direction of the anchor bolt from "A", "B" or "C".
 A : 964 (Installation hole pitch) * The tubing is routed out from the front.
 B : 730 (Installation hole pitch) * The tubing is routed out from the bottom.
 C : 730 (Installation hole pitch)

Types of unit		8HP	10HP
①	Refrigerant tubing (gas tube) brazed connection	ø19.05	ø22.22
②	Refrigerant tubing (liquid tube) flared connection	ø9.52	ø9.52
③	Refrigerant tubing (balance tube) flared connection	ø6.35	ø6.35
④	Installation holes(8-15x21 elongated holes), anchor bolts M12 or larger		
⑤	Refrigerant tubing port (front: knock-out hole)		
⑥	Refrigerant tubing port (bottom: slit hole)		
⑦	Electrical wiring port (front: ø60, ø29 knock-out hole - for conduit connection)		
⑧	Electrical wiring port (bottom: ø60, ø29 knock-out hole - for conduit connection)		
⑨	Pressure outlet port (for high pressure: ø7.94 Schrader-type connection)		
⑩	Pressure outlet port (for low pressure: ø7.94 Schrader-type connection)		
⑪	Terminal plate		
⑫	Terminal plate for inter-unit control wiring and/or inter-outdoor unit control wiring		

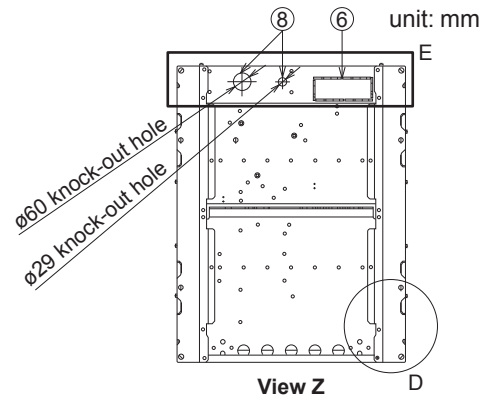
1. Outdoor Unit

1-2. Dimensional Data (continued)

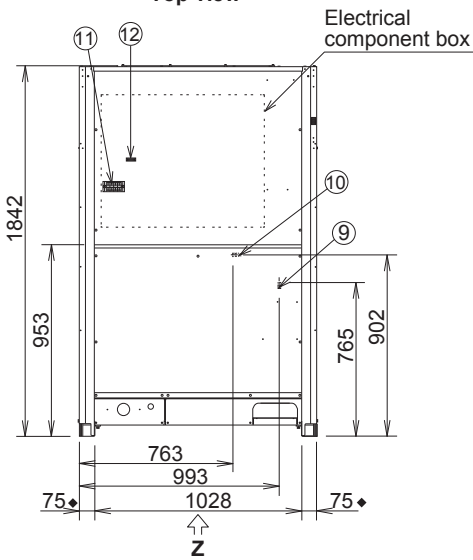
U-12ME2E8, U-14ME2E8, U-16ME2E8



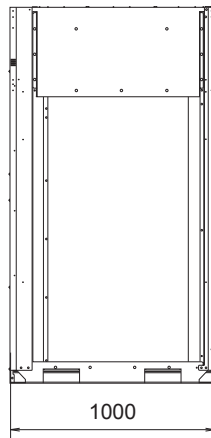
Top view



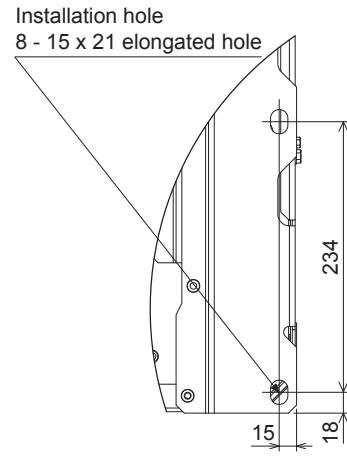
View Z



Front view

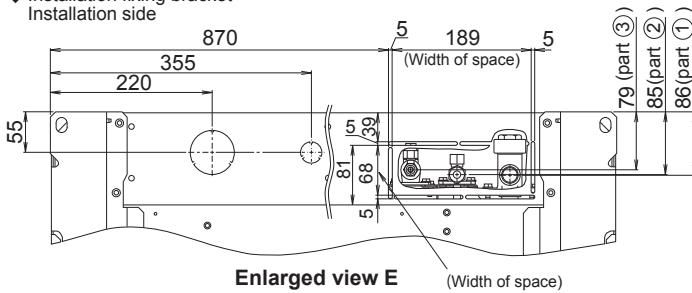


Side view



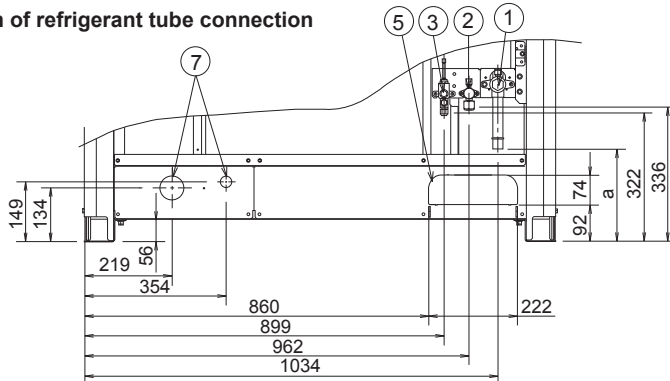
Enlarged view D

◆ Installation fixing bracket
Installation side



Enlarged view E

Position of refrigerant tube connection



Dimension of refrigerant tube connecting position

Types of unit	12HP	14HP	16HP
a	231	231	154

• 16hp unit dimensions shows a case using the connection tubing supplied with the unit.

According to the installation site, you may choose the setting position in the depth direction of the anchor bolt from "A", "B" or "C".
A : 964 (Installation hole pitch) * The tubing is routed out from the front.
B : 730 (Installation hole pitch) * The tubing is routed out from the bottom.
C : 730 (Installation hole pitch)

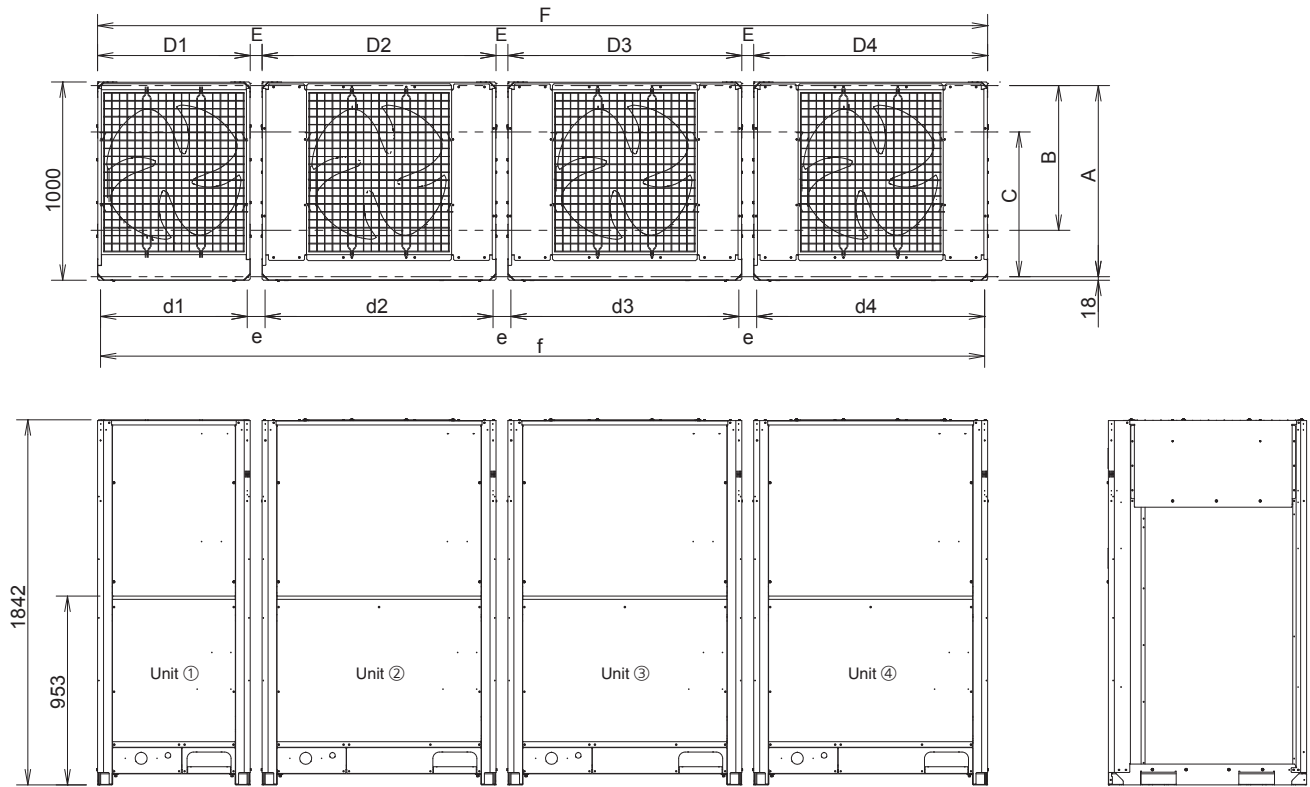
Types of unit		12HP	14HP	16HP
①	Refrigerant tubing (gas tube) brazed connection	ø25.4	ø25.4	ø28.58
②	Refrigerant tubing (liquid tube) flared connection	ø12.7	ø12.7	ø12.7
③	Refrigerant tubing (balance tube) flared connection	ø6.35	ø6.35	ø6.35
④	Installation holes(8-15x21 elongated holes), anchor bolts M12 or larger			
⑤	Refrigerant tubing port (front: knock-out hole)			
⑥	Refrigerant tubing port (bottom: slit hole)			
⑦	Electrical wiring port (front: ø60, ø29 knock-out hole - for conduit connection)			
⑧	Electrical wiring port (bottom: ø60, ø29 knock-out hole - for conduit connection)			
⑨	Pressure outlet port (for high pressure: ø7.94 Schrader-type connection)			
⑩	Pressure outlet port (for low pressure: ø7.94 Schrader-type connection)			
⑪	Terminal plate			
⑫	Terminal plate for inter-unit control wiring and/or inter-outdoor unit control wiring			

1. Outdoor Unit

1-3. Multiple Unit Installation Example

● Diagrams for 18hp ~ 64hp

Unit: mm



Capacity	Combination				Dimensions of single unit				Distance between units		Dimensions of combination unit		Dimensions of single unit installation hole				Distance between unit installation hole		Dimensions of combination unit installation hole	
	①	②	③	④	D1	D2	D3	D4	E(+1)	E(+2)	F(+1)	F(+2)	d1	d2	d3	d4	e(+1)	e(+2)	f(+1)	f(+2)
8HP	8	—	—	—	770	—	—	—	—	—	770	770	740	—	—	—	—	—	740	740
10HP	10	—	—	—	770	—	—	—	—	—	770	770	740	—	—	—	—	—	740	740
12HP	12	—	—	—	1180	—	—	—	—	—	1180	1180	1150	—	—	—	—	—	1150	1150
14HP	14	—	—	—	1180	—	—	—	—	—	1180	1180	1150	—	—	—	—	—	1150	1150
16HP	16	—	—	—	1180	—	—	—	—	—	1180	1180	1150	—	—	—	—	—	1150	1150
18HP	8	10	—	—	770	770	—	—	60	180	1600	1720	740	740	—	—	90	210	1570	1690
20HP	10	10	—	—	770	770	—	—	60	180	1600	1720	740	740	—	—	90	210	1570	1690
22HP	10	12	—	—	770	1180	—	—	60	180	2010	2130	740	1150	—	—	90	210	1980	2100
24HP	12	12	—	—	1180	1180	—	—	60	180	2420	2540	1150	1150	—	—	90	210	2390	2510
26HP	10	16	—	—	770	1180	—	—	60	180	2010	2130	740	1150	—	—	90	210	1980	2100
28HP	12	16	—	—	1180	1180	—	—	60	180	2420	2540	1150	1150	—	—	90	210	2390	2510
30HP	14	16	—	—	1180	1180	—	—	60	180	2420	2540	1150	1150	—	—	90	210	2390	2510
32HP	16	16	—	—	1180	1180	—	—	60	180	2420	2540	1150	1150	—	—	90	210	2390	2510
34HP	10	12	12	—	770	1180	1180	—	60	180	3250	3490	740	1150	1150	—	90	210	3220	3460
36HP	12	12	12	—	1180	1180	1180	—	60	180	3660	3900	1150	1150	1150	—	90	210	3630	3870
38HP	10	12	16	—	770	1180	1180	—	60	180	3250	3490	740	1150	1150	—	90	210	3220	3460
40HP	12	12	16	—	1180	1180	1180	—	60	180	3660	3900	1150	1150	1150	—	90	210	3630	3870
42HP	10	16	16	—	770	1180	1180	—	60	180	3250	3490	740	1150	1150	—	90	210	3220	3460
44HP	12	16	16	—	1180	1180	1180	—	60	180	3660	3900	1150	1150	1150	—	90	210	3630	3870
46HP	14	16	16	—	1180	1180	1180	—	60	180	3660	3900	1150	1150	1150	—	90	210	3630	3870
48HP	16	16	16	—	1180	1180	1180	—	60	180	3660	3900	1150	1150	1150	—	90	210	3630	3870
50HP	10	12	12	16	770	1180	1180	1180	60	180	4490	4850	740	1150	1150	1150	90	210	4460	4820
52HP	12	12	12	16	1180	1180	1180	1180	60	180	4900	5260	1150	1150	1150	1150	90	210	4870	5230
54HP	10	12	16	16	770	1180	1180	1180	60	180	4490	4850	740	1150	1150	1150	90	210	4460	4820
56HP	12	12	16	16	1180	1180	1180	1180	60	180	4900	5260	1150	1150	1150	1150	90	210	4870	5230
58HP	10	16	16	16	770	1180	1180	1180	60	180	4490	4850	740	1150	1150	1150	90	210	4460	4820
60HP	12	16	16	16	1180	1180	1180	1180	60	180	4900	5260	1150	1150	1150	1150	90	210	4870	5230
62HP	14	16	16	16	1180	1180	1180	1180	60	180	4900	5260	1150	1150	1150	1150	90	210	4870	5230
64HP	16	16	16	16	1180	1180	1180	1180	60	180	4900	5260	1150	1150	1150	1150	90	210	4870	5230

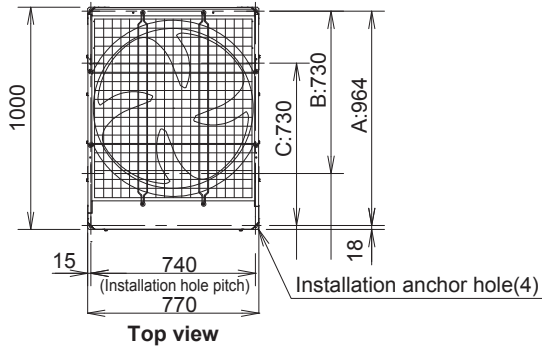
According to the installation site, you may choose the setting position in the depth direction of the anchor bolt from A, B or C.
 A: 964: (Installation hole pitch) : For removing tube forward. Use the data with the asterisk (*) in combination of each unit dimension.
 B: 730: (Installation hole pitch) : For removing tube downward. Use the data with the asterisk (*) in combination of each unit dimension.
 C: 730: (Installation hole pitch) : Use the data with the asterisk (*) in combination of each unit dimension.

1. Outdoor Unit

Position of center of gravity

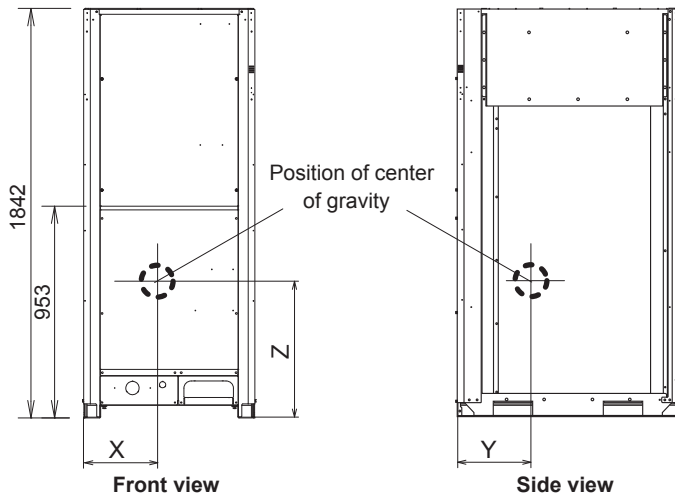
U-8ME8E8, U-10ME2E8

Unit: mm



Position of center of gravity

Model	Position of center of gravity			Weight (kg)
	X	Y	Z	
U-8ME2E8	375	455	890	210
U-10ME2E8	375	455	890	210

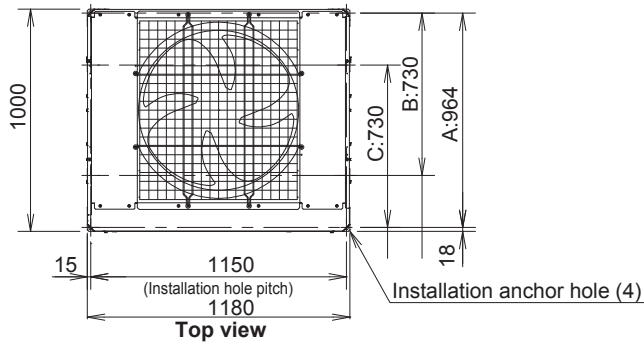


• According to the installation site, you may choose the setting position in the depth direction of the anchor bolt from "A", "B" or "C".

A : 964 (Installation hole pitch) * The tubing is routed out from the front.
B : 730 (Installation hole pitch) * The tubing is routed out from the bottom.
C : 730 (Installation hole pitch)

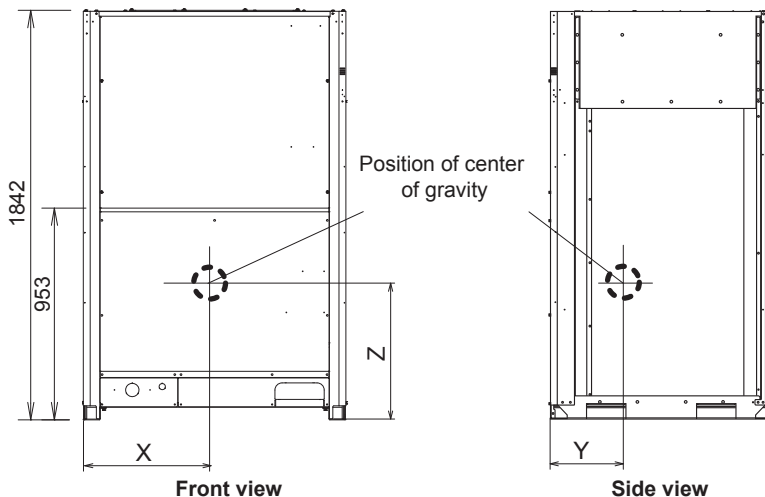
U-12ME2E8, U-14ME2E8, U-16ME2E8

Unit: mm



Position of center of gravity

Model	Position of center of gravity			Weight (kg)
	X	Y	Z	
U-12ME2E8	630	480	870	270
U-14ME2E8	615	440	785	315
U-16ME2E8	615	440	785	315



• According to the installation site, you may choose the setting position in the depth direction of the anchor bolt from "A", "B" or "C".

A : 964 (Installation hole pitch) * The tubing is routed out from the front.
B : 730 (Installation hole pitch) * The tubing is routed out from the bottom.
C : 730 (Installation hole pitch)