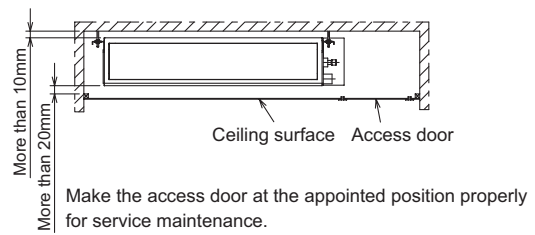
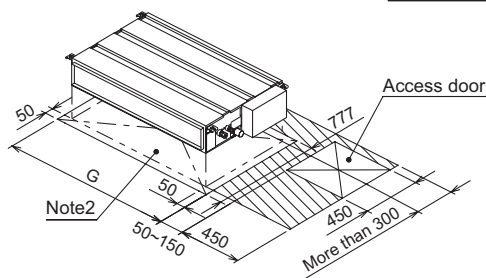
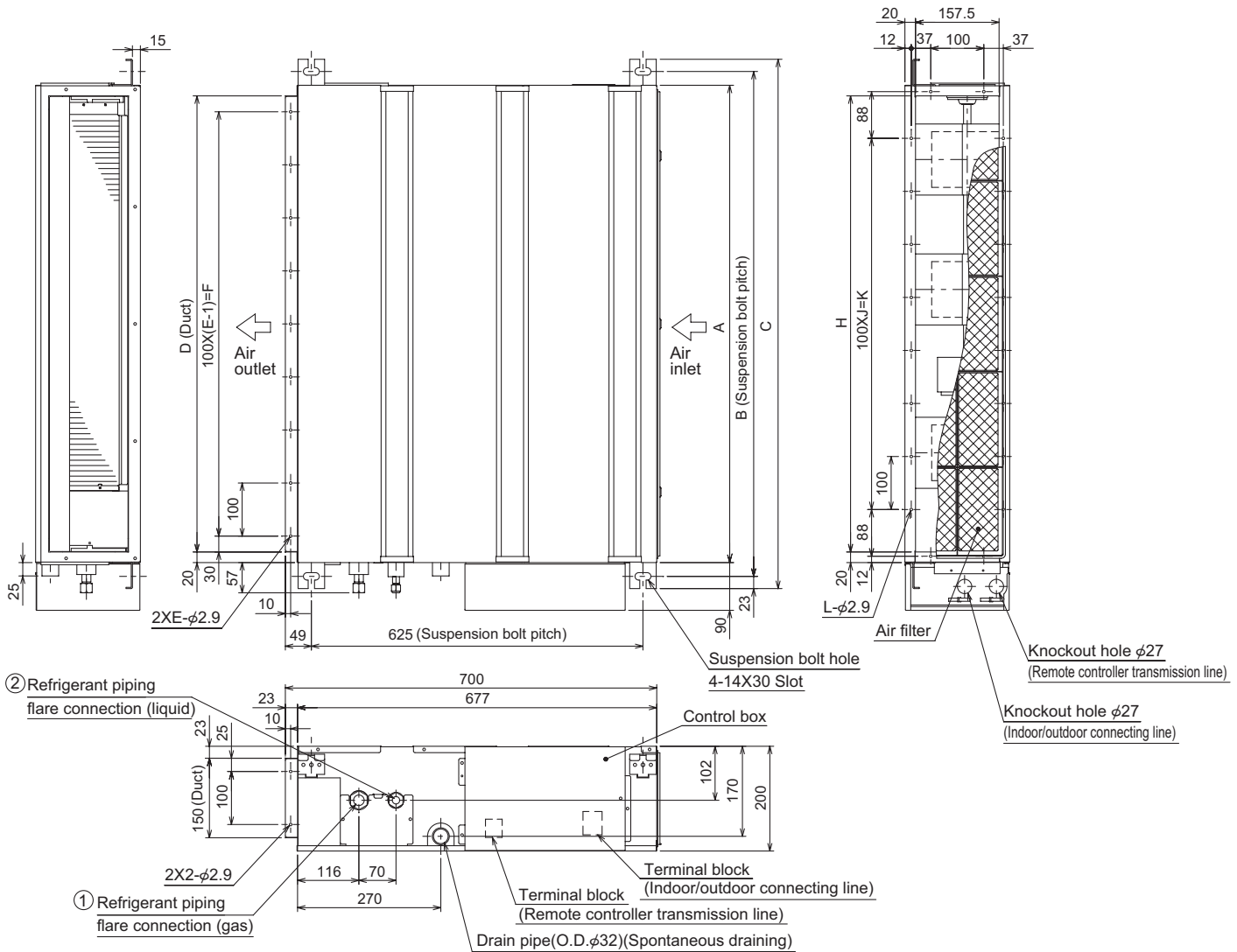


3

OUTLINES AND DIMENSIONS

Unit : mm



Required space for service and maintenance

Model	A	B	C	D	E	F	G	H	J	K	L	① Gas pipe	② Liquid pipe
SEZ-KD25VAQ	700	752	798	660	7	600	800	660	5	500	16	φ9.52	φ6.35
SEZ-KD35VAQ	900	952	998	860	9	800	1000	860	7	700	20		
SEZ-KD50VAQ												φ15.88	
SEZ-KD60VAQ	1100	1152	1198	1060	11	1000	1200	1060	9	900	24	φ15.88	φ9.52
SEZ-KD71VAQ												φ9.52	

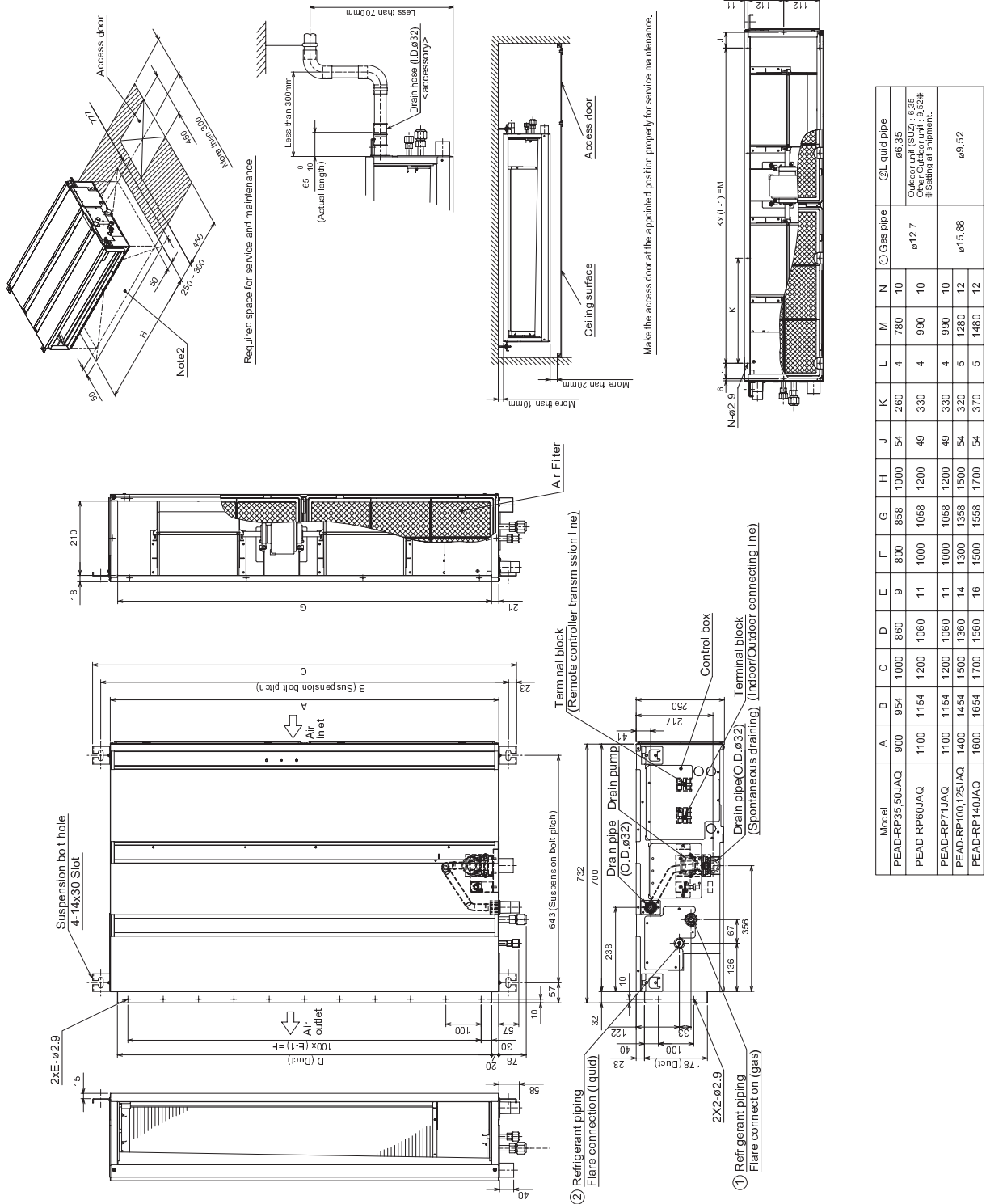
- Note1. Use M10 screw for the suspension bolt (field supply).
- 2. Keep the service space for the maintenance at the bottom.
- 3. This chart indicates for SEZ-KD50VAQ model, which has 3 fans.
SEZ-KD25,35VAQ models have 2 fans.
SEZ-KD60,71VAQ models have 4 fans.
- 4. In case an inlet duct is used, remove the air filter (supply with the unit), then install the filter (field supply) at suction side.

6

OUTLINES & DIMENSIONS

INDOOR UNIT

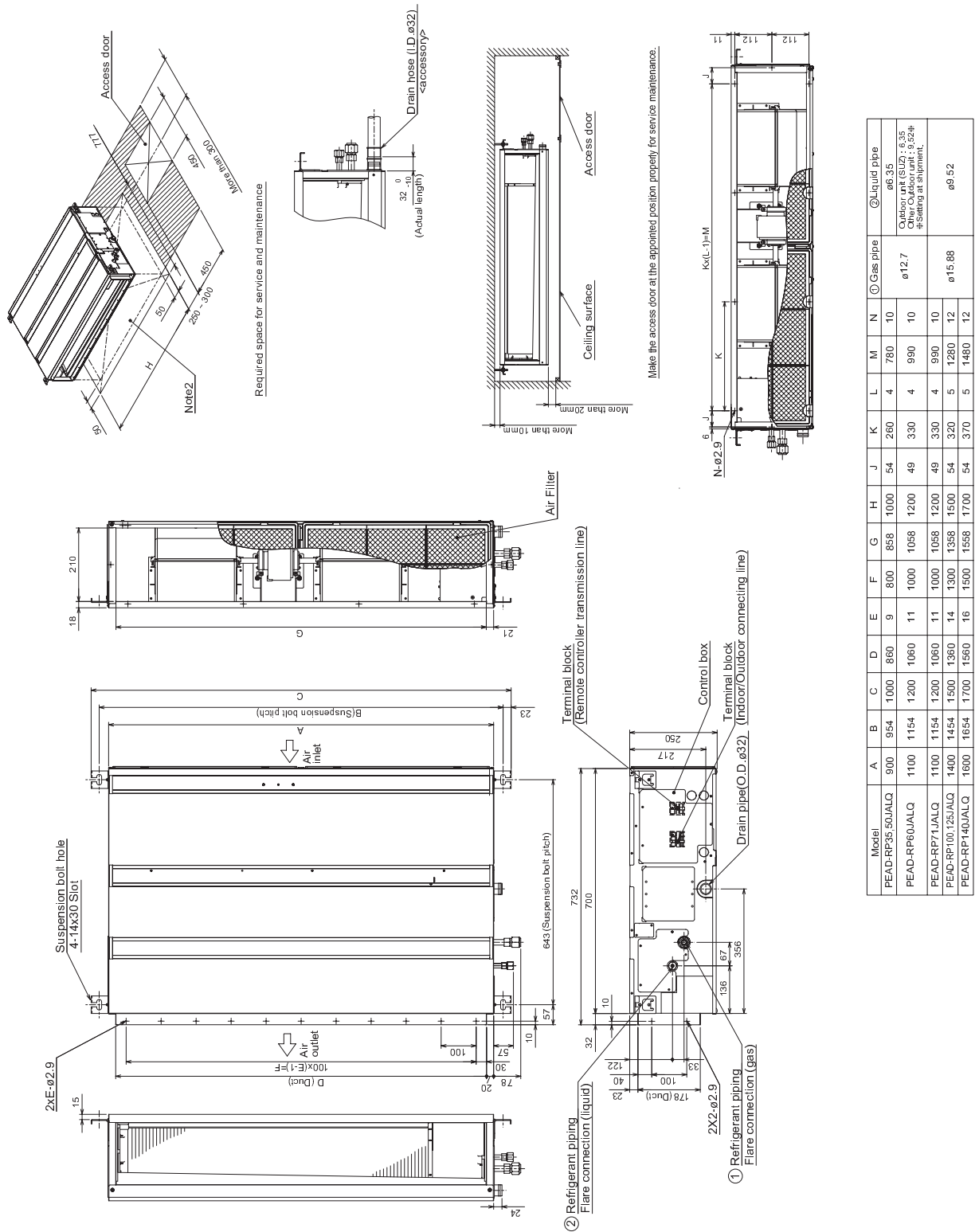
PEAD-RP35, 50, 60, 71, 100, 125, 140JAQ



Model	A	B	C	D	E	F	G	H	J	K	L	M	N	① Gas pipe	② Liquid pipe
PEAD-RP35,50JAQ	900	954	1000	860	800	858	1000	1000	54	260	4	780	10	ø12.7	ø6.35
PEAD-RP60JAQ	1100	1154	1200	1060	1100	1058	1200	1200	49	330	4	990	10	ø12.7	ø6.35
PEAD-RP71JAQ	1100	1154	1200	1060	1100	1058	1200	1200	49	330	4	990	10	ø12.7	ø6.35
PEAD-RP100,125JAQ	1400	1454	1500	1360	1400	1358	1500	1500	54	320	5	1280	12	ø15.88	ø9.52
PEAD-RP140JAQ	1600	1654	1700	1560	1600	1558	1700	1700	54	370	5	1480	12	ø15.88	ø9.52

- NOTE 1. Use M10 screw for the Suspension bolt (field supply).
2. Keep the service space for the maintenance at the bottom.
3. This chart indicates for PEAD-RP60-71-100-125-140JAQ models, which have 2 fans. PEAD-RP35-50JAQ models have 1 fan.
4. In case of the inlet duct is used, remove the air filter (supply with the unit), then install the filter (field supply) at suction side.

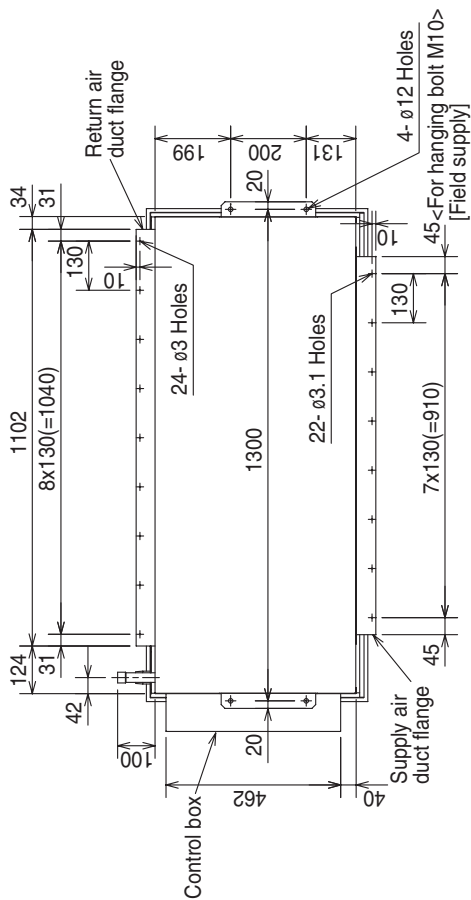
PEAD-RP35, 50, 60, 71, 100, 125, 140JALQ



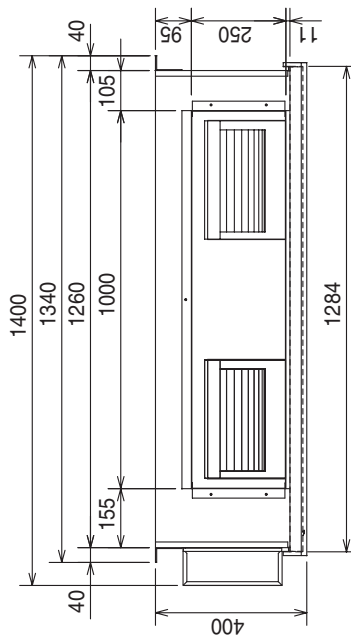
- NOTE 1. Use M10 screw for the Suspension bolt (field supply).
 2. Keep the service space for the maintenance at the bottom.
 3. This chart indicates for PEAD-RP60-71-100-125-140JALQ models, which have 2 fans. PEAD-RP35-50JALQ models have 1 fan.
 4. In case of the inlet duct is used, remove the air filter (supply with the unit), then install the filter (field supply) at suction side.

PEA-RP200GAQ

Unit : mm

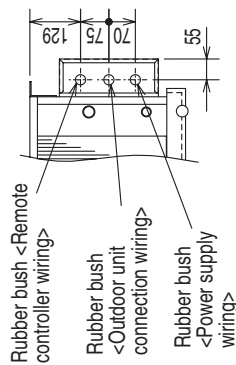


Top view

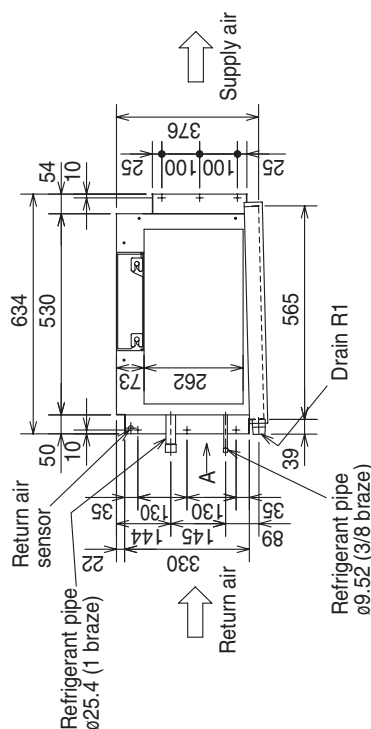


Front view

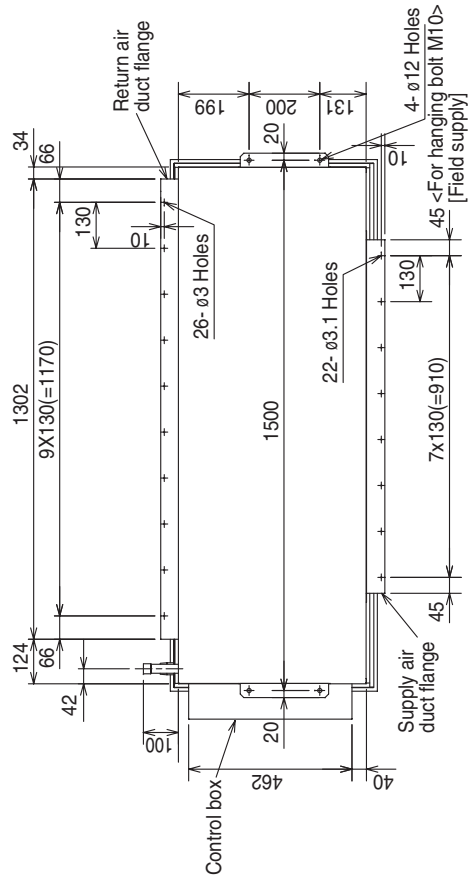
- <Accessory>
- Pipe cover 2pcs.
- (For dew condensation prevention of local piping and unit connection.)
- Remote controller..... 1pc.



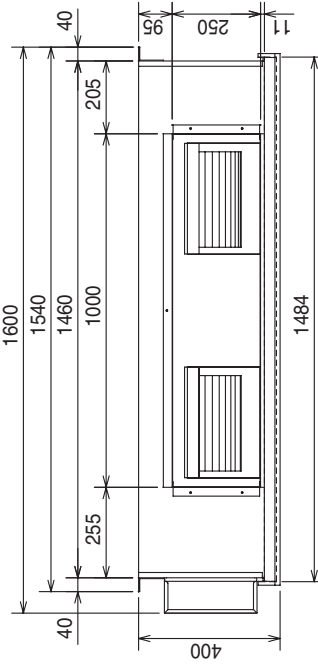
A



Left side view

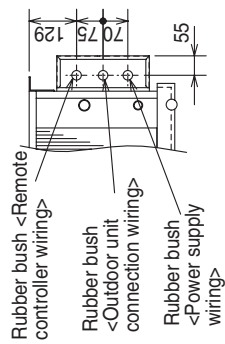


Top view

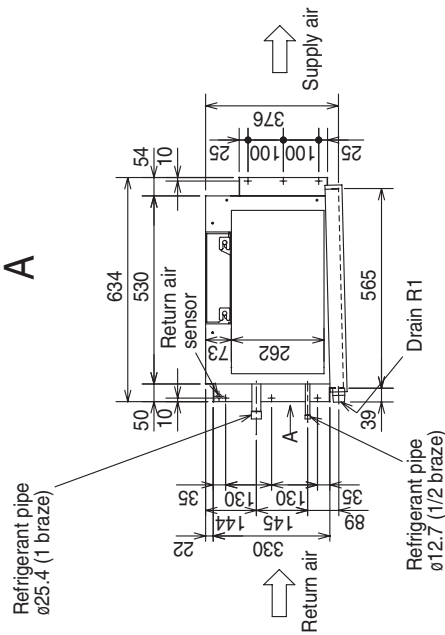


Front view

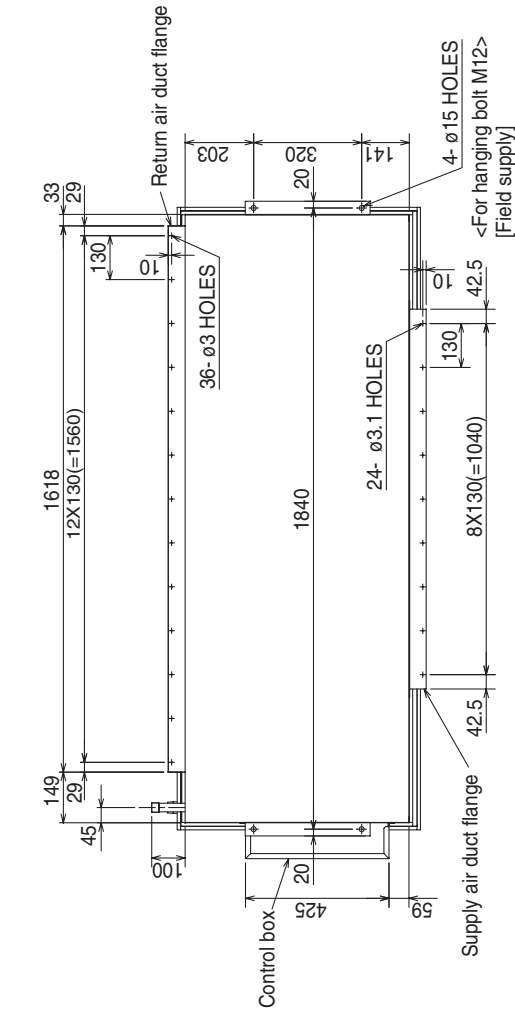
- <Accessory>
- Pipe cover 2pcs.
(For dew condensation prevention of local piping and unit connection.)
- Remote controller 1pc.



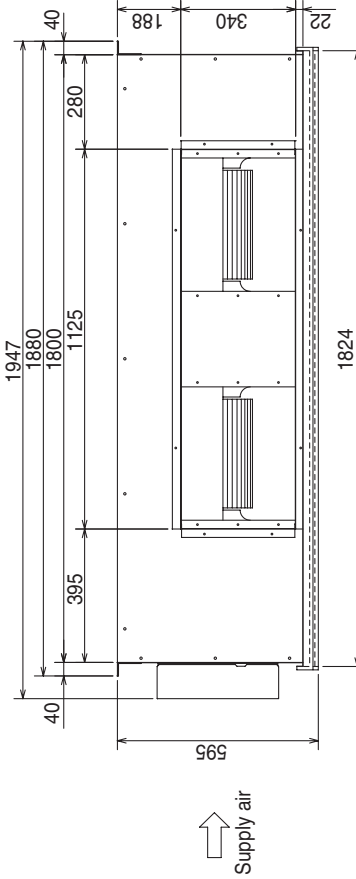
A



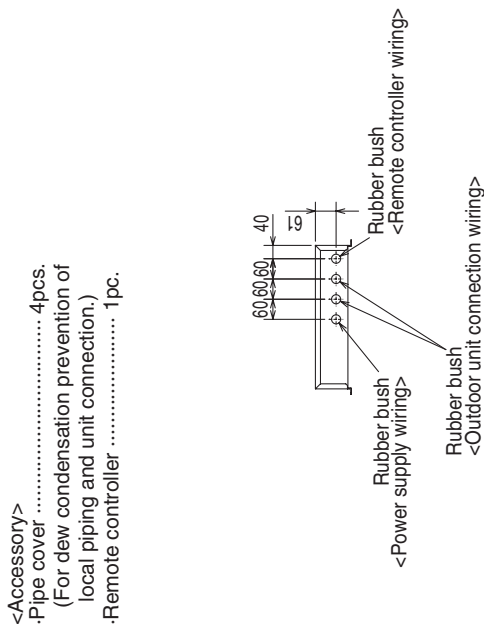
Left side view



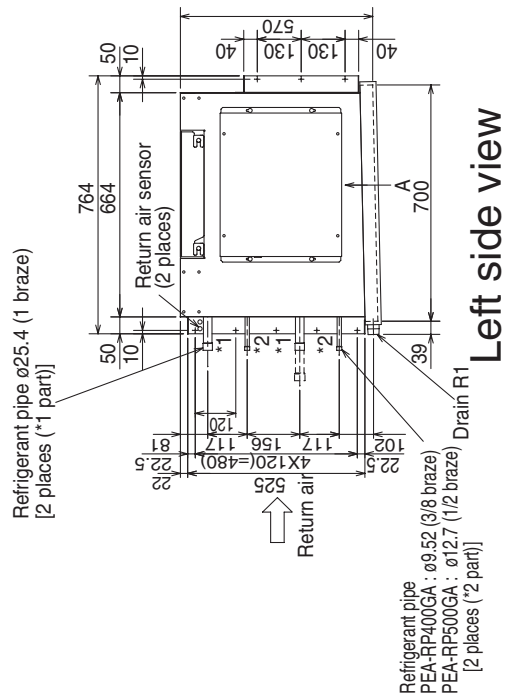
Top view



Front view



A



Left side view

- <Accessory>
- Pipe cover 4pcs.
(For dew condensation prevention of local piping and unit connection.)
- Remote controller 1pc.