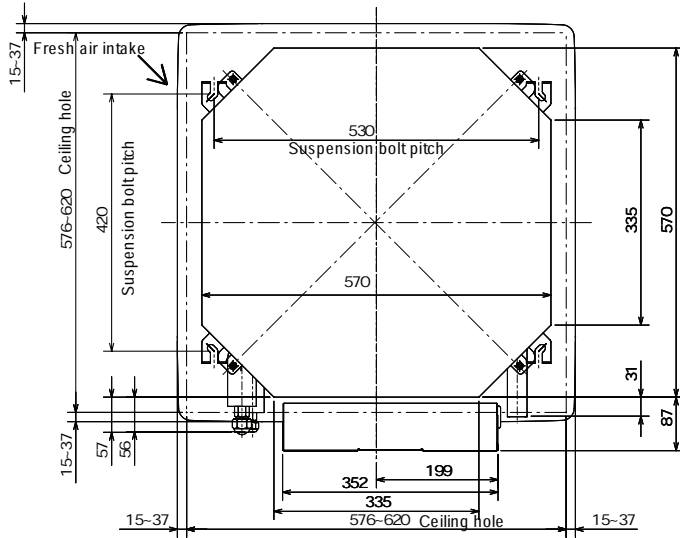


5

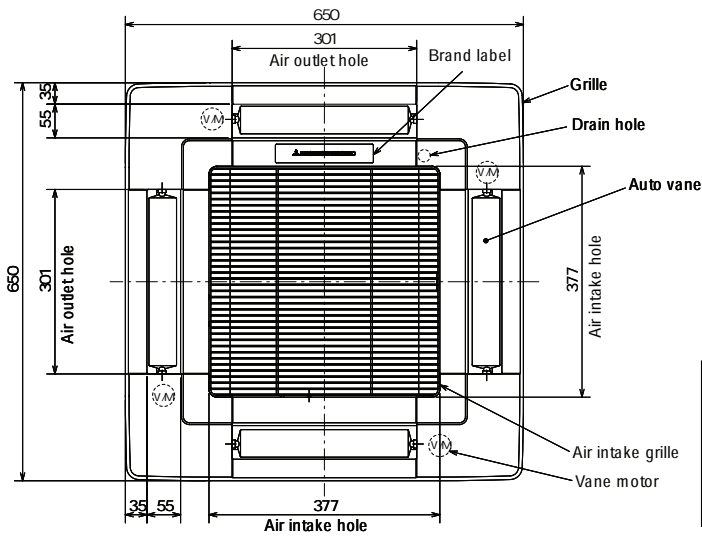
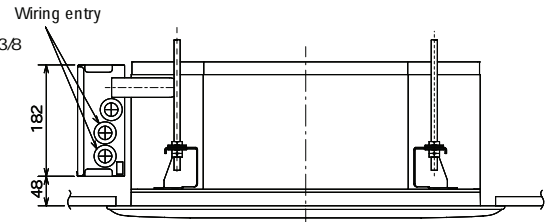
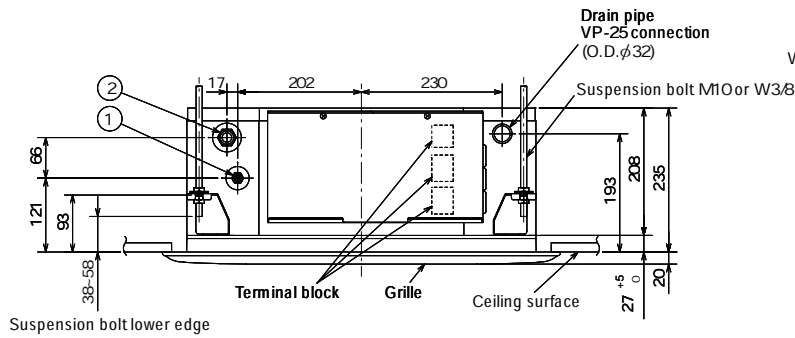
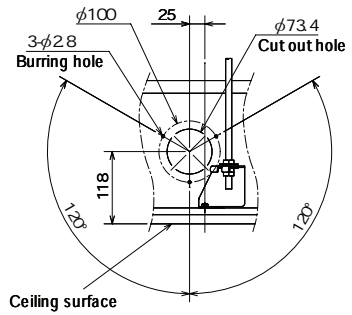
OUTLINES AND DIMENSIONS

PLFY-P20VCM-E2.TH
PLFY-P32VCM-E2.TH

PLFY-P25VCM-E2.TH
PLFY-P40VCM-E2.TH



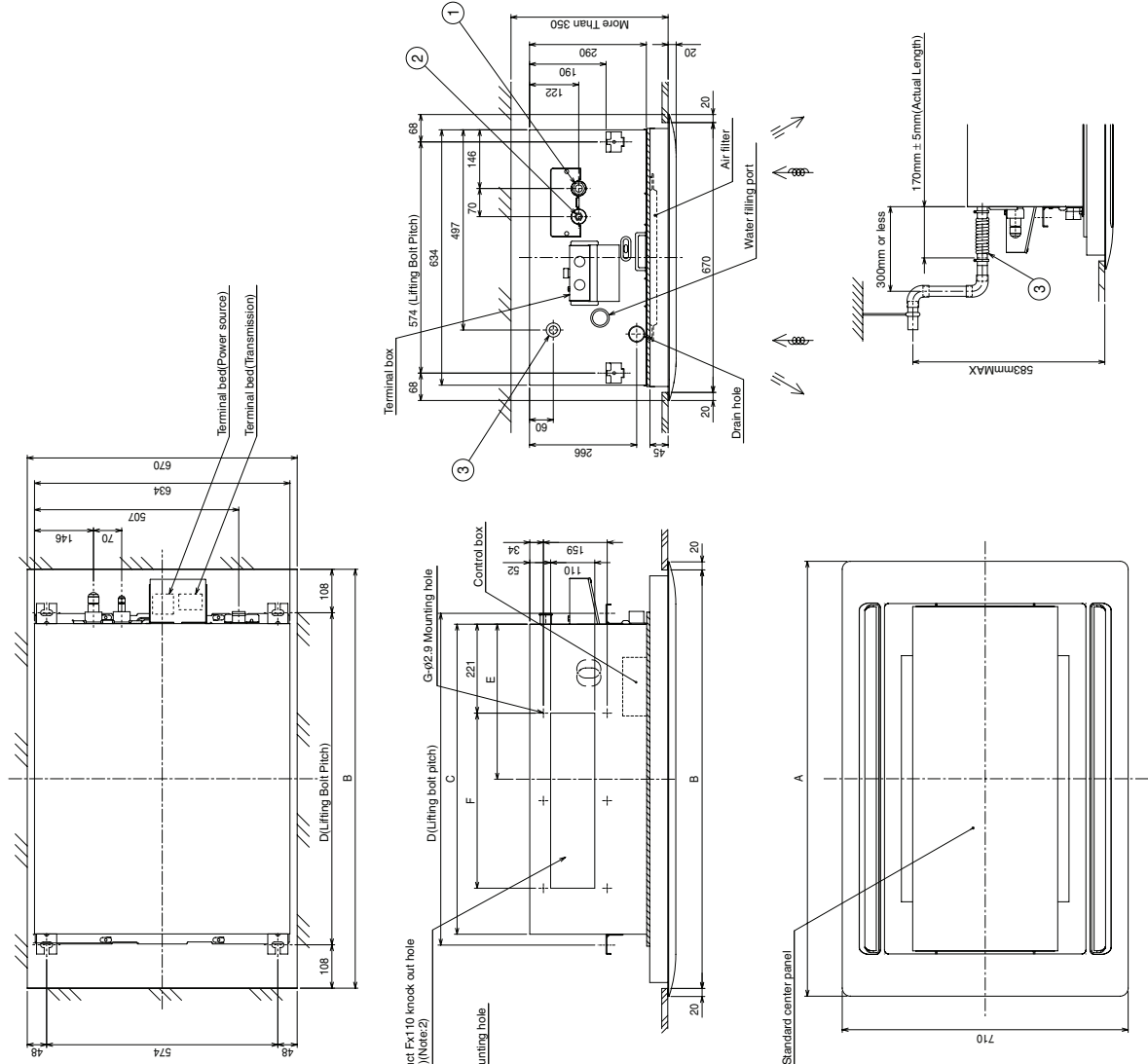
Detail drawing of fresh air intake



Mdels	①	②
PLFY-P20VCME 2	Refrigant pipe (6.35mm dia.)	Refrigant pipe (12.7mm dia.)
PLFY-P25VCME 2	flared connection	flared connection
PLFY-P32VCME 2	1/4 inch	1/2 inch
PLFY-P40VCME 2		

PLFY-P20-25-32-40-50-63-80-100VLMD-E

Unit : mm



Note: 1. Use M10 screw for the lifting bolt (field supply).
 2. It is available to connect the branch duct on right and left side both.
 3. On Model :50, 100, you would use flare nut packed with the Indoor Unit, when connecting the Outdoor Unit for R407C, R22.
 4. In order to increase the strength of the flare nut, the size of some of them has been increased.

- <flares>
 - ①
 - ②
 - ①
 - ②
 - ①
 - ②
 - ①
 - ②
 - ③
- Model 20-25-32-40 Gas pipe:LP ø12.7
 Liquid pipe:HP ø6.35
- Model 50 Gas pipe:LP ø12.7<R410A outdoor unit>
 Liquid pipe:HP ø15.88<The other outdoor unit>
 ø6.35<R410A outdoor unit>
 ø9.52<The other outdoor unit>
- Model 63-80 Gas pipe:LP ø15.88
 Liquid pipe:HP ø9.52
- Model 100 Gas pipe:LP ø15.88<R410A outdoor unit>
 Liquid pipe:HP ø19.05<The other outdoor unit>
 ø9.52
- Drain hose VP-25<flexible joint> (accessory)

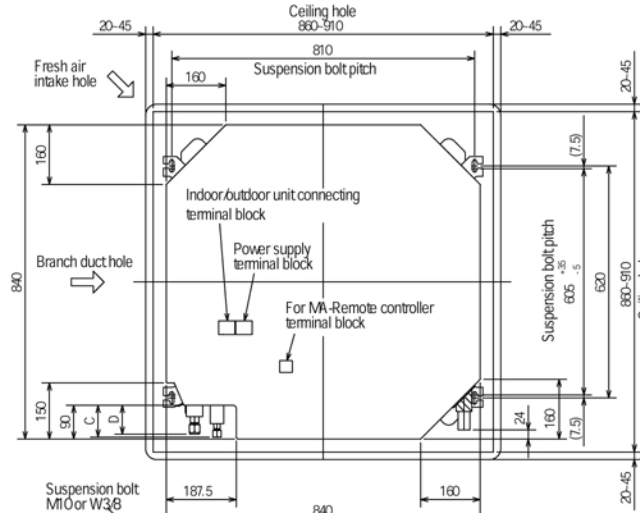
Model	A	B	C	D	E	F	G	H(Liquid)	H(Gas)
PLFY-P20VLMD-E	1080	1040	776	824	388	217.5X2 =435	6	17	27
PLFY-P25VLMD-E									
PLFY-P32VLMD-E									
PLFY-P40VLMD-E									
PLFY-P50VLMD-E	1250	1210	946	994	473			22	29
PLFY-P63VLMD-E									
PLFY-P80VLMD-E									
PLFY-P100VLMD-E	1750	1710	1446	1494	723	188.5X4 =754	10	22	36

PLFY-P32VBM-E(1).UK
 PLY-P80VBM-E(1).UK
 PLY-P32VBM-ER2.UK
 PLY-P80VBM-ER2.UK

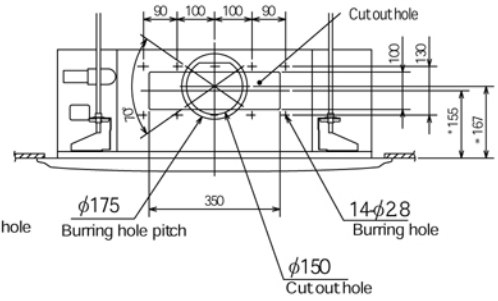
PLFY-P40VBM-E(1).UK
 PLY-P100VBM-E.UK
 PLY-P40VBM-ER2.UK
 PLY-P100VBM-ER2.UK

PLFY-P50VBM-E(1).UK
 PLY-P125VBM-E.UK
 PLY-P50VBM-ER2.UK
 PLY-P100VBM-ER2.UK

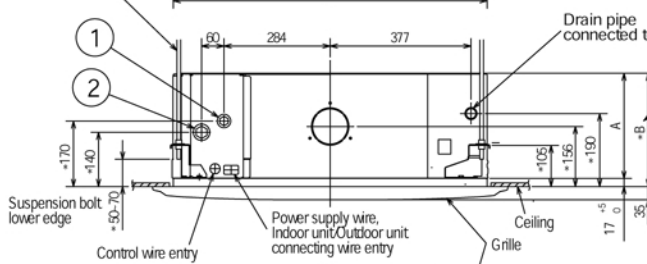
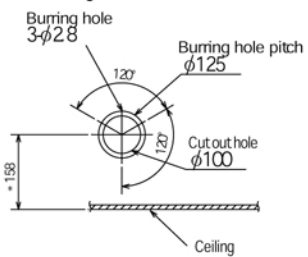
PLFY-P63VBM-E(1).UK
 PLY-P63VBM-ER2.UK
 Unit : mm



Detail connecting of branch duct(Both aspects)



Detail drawing of fresh air intake hole



(Connected the attached flexible pipe or socket)
 Keep approximately 10 to 15 mm space between unit ceiling and ceiling slab.

In case of standard grille : PLP-6BA, PLP-6BAMD

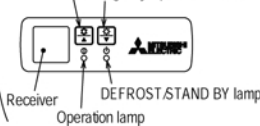


In case of auto-grille : PLP-6BAJ

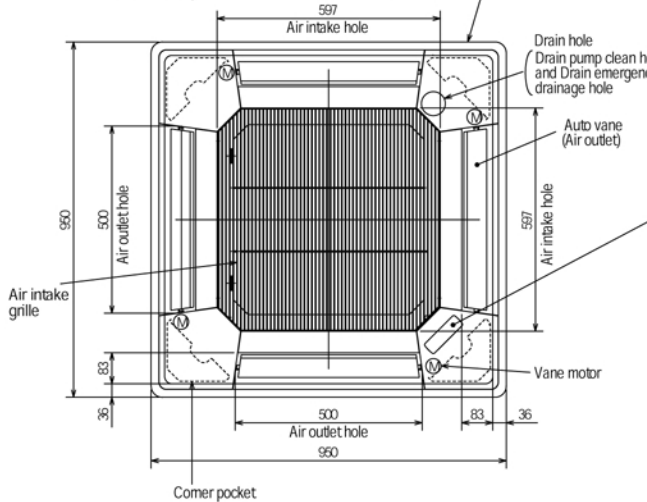
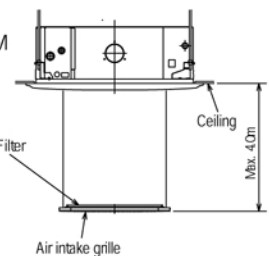
In case of wireless remote controller : PLP-6BALM

Emergency operation switch-Cooling> and Emergency Up,Down switch-Down>

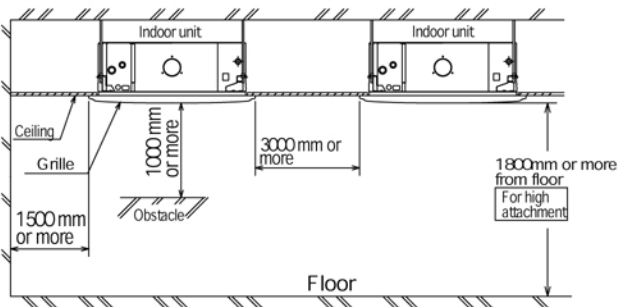
Emergency operation switch-Heating>and Emergency Up,Down switch-Down>



Auto-grille
 Air intake grille up/down distance



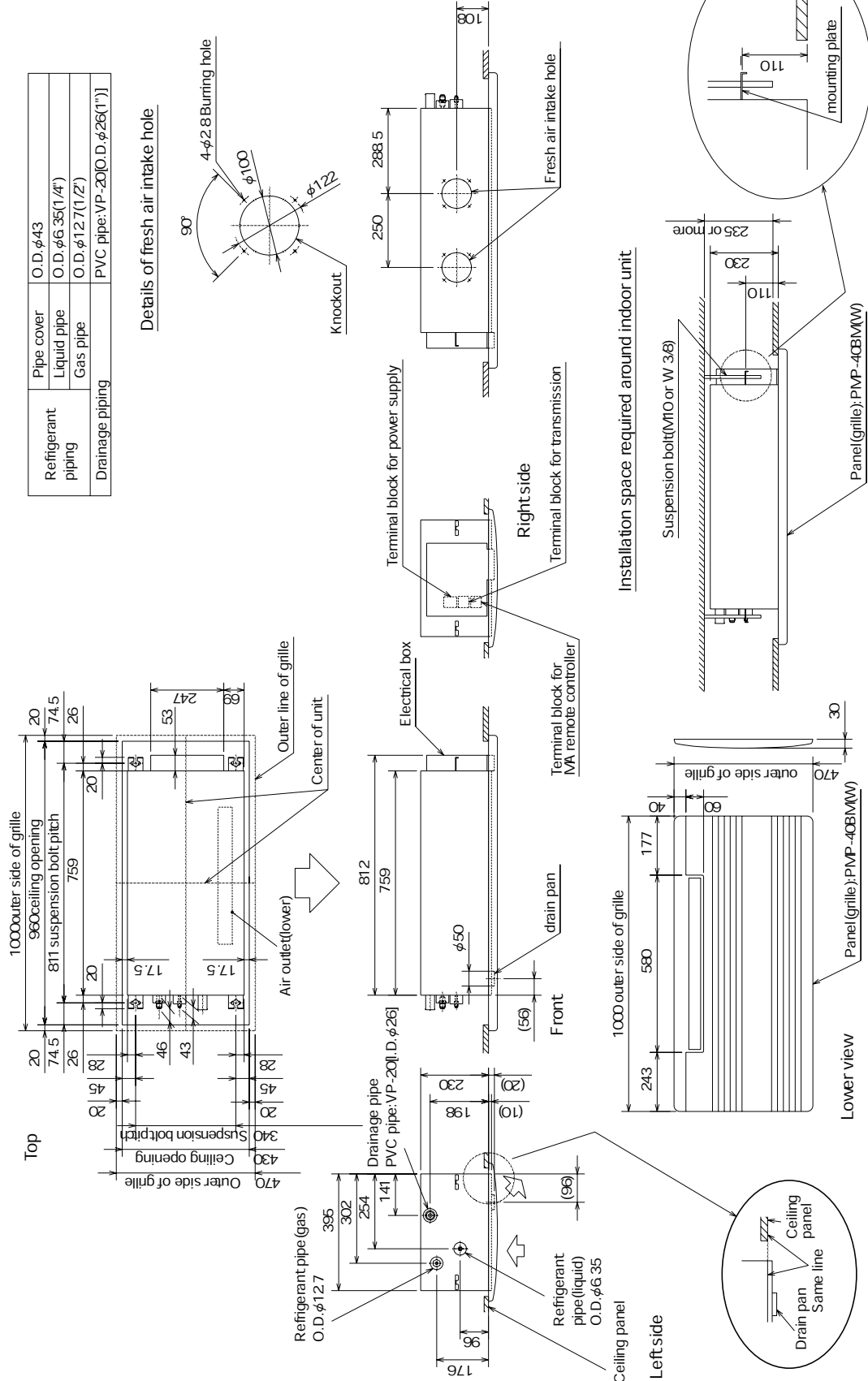
- Note
1. Please choose the grille from a standard grille, auto-grille.
 2. As for drain pipe, please use VP-25 (O.D. φ32 PVC TUBE). Drain pump is included.
 Max. lifting height is 850mm from the ceiling.
 3. As for suspension bolt, please use M10 or W3/8 (Procured at local site)
 4. Electrical box may be removed for the service purpose.
 Make sure to slack the electrical wire little bit for control/power wires connection.
 5. The height of the indoor unit is able to be adjusted with the grille attached.
 6. For the installation of the optional high efficiency filter or optional multi-functional casement
 - 1) Requires E or more space between transom and ceiling for the installation.
 - 2) Add 135 mm to the dimensions * marked on the figure.
 - 3) The optional high efficiency filter must be used jointly with optional multi-functional casement
 7. When installing the branch ducts, be sure to insulate adequately. Otherwise condensation and dripping may occur. (It becomes the cause of dew drops/water dew.)
 8. As for necessary installation/service space, please refer to the left figure.
- Accessory ... Drain socket (I.D. 32)



Models	①	②	A	B	C	D	E
PLFY-P32,40,50VBM/E	Refrigerant pipe - φ 6.35 Flared connection - 1/4 inch	Refrigerant pipe - φ12.7 Flared connection - 1/2 inch	241	258	80	74	400
PLFY-P63,80VBM/E	Refrigerant pipe - 3/8 inch Flared connection - φ9.52	Refrigerant pipe - φ15.88 Flared connection - 5/8 inch	281	298	85	77	440

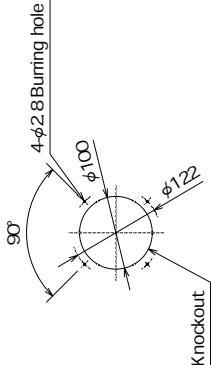
- | | | | |
|---------------|----------------------------|-----------------|-----------------|
| PMFY-P20VBM-E | PMFY-P20VBM-E ₁ | PMFY-P20VBM-E#2 | PMFY-P20VBM-ER3 |
| PMFY-P25VBM-E | PMFY-P25VBM-E ₁ | PMFY-P25VBM-E#2 | PMFY-P25VBM-ER3 |
| PMFY-P32VBM-E | PMFY-P32VBM-E ₁ | PMFY-P32VBM-E#2 | PMFY-P32VBM-ER3 |
| PMFY-P40VBM-E | PMFY-P40VBM-E ₁ | PMFY-P40VBM-E#2 | PMFY-P40VBM-ER3 |

Unit : mm

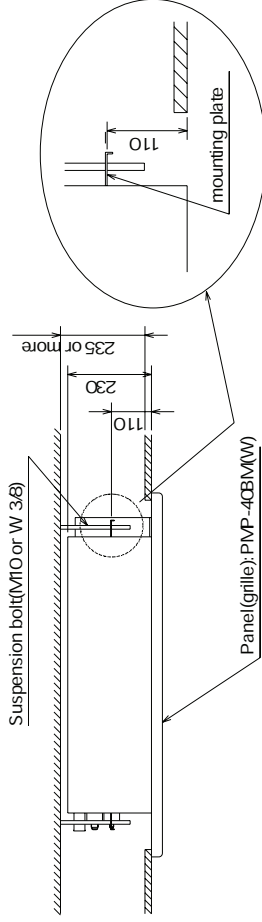


Refrigerant piping	Pipe cover	O.D. φ43
Drainage piping	Liquid pipe	O.D. φ6.35(1/4")
	Gas pipe	O.D. φ12.7(1/2")
PVC pipe: VP-20(O.D. φ26(1"))		

Details of fresh air intake hole



Installation space required around indoor unit



LOWER VIEW

