

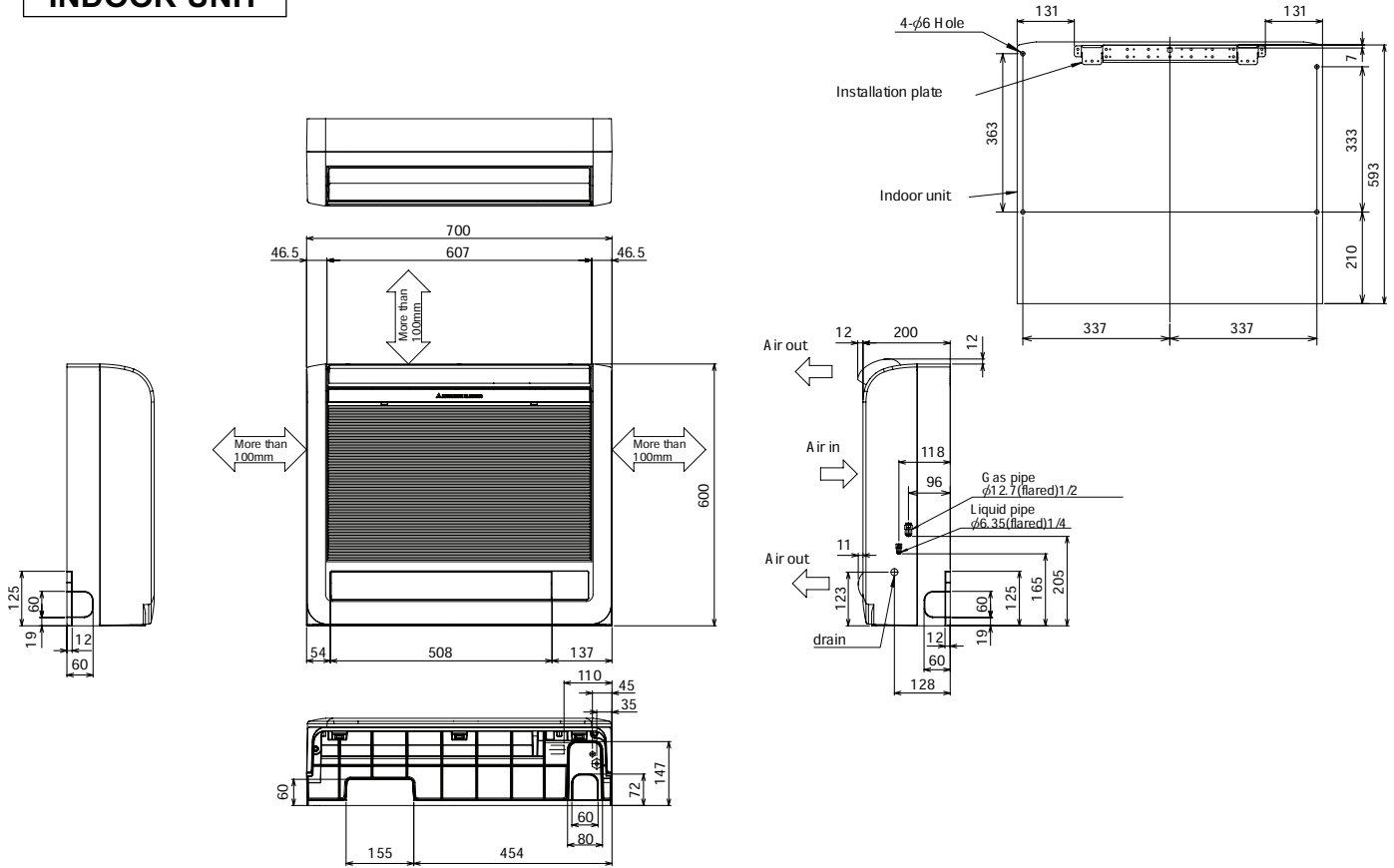
# 7

# OUTLINES AND DIMENSIONS

- PFFY-P20VKM-E    PFFY-P20VKM-ER1
- PFFY-P25VKM-E    PFFY-P25VKM-ER1
- PFFY-P32VKM-E    PFFY-P32VKM-ER1
- PFFY-P40VKM-E    PFFY-P40VKM-ER1

Unit : mm

## INDOOR UNIT

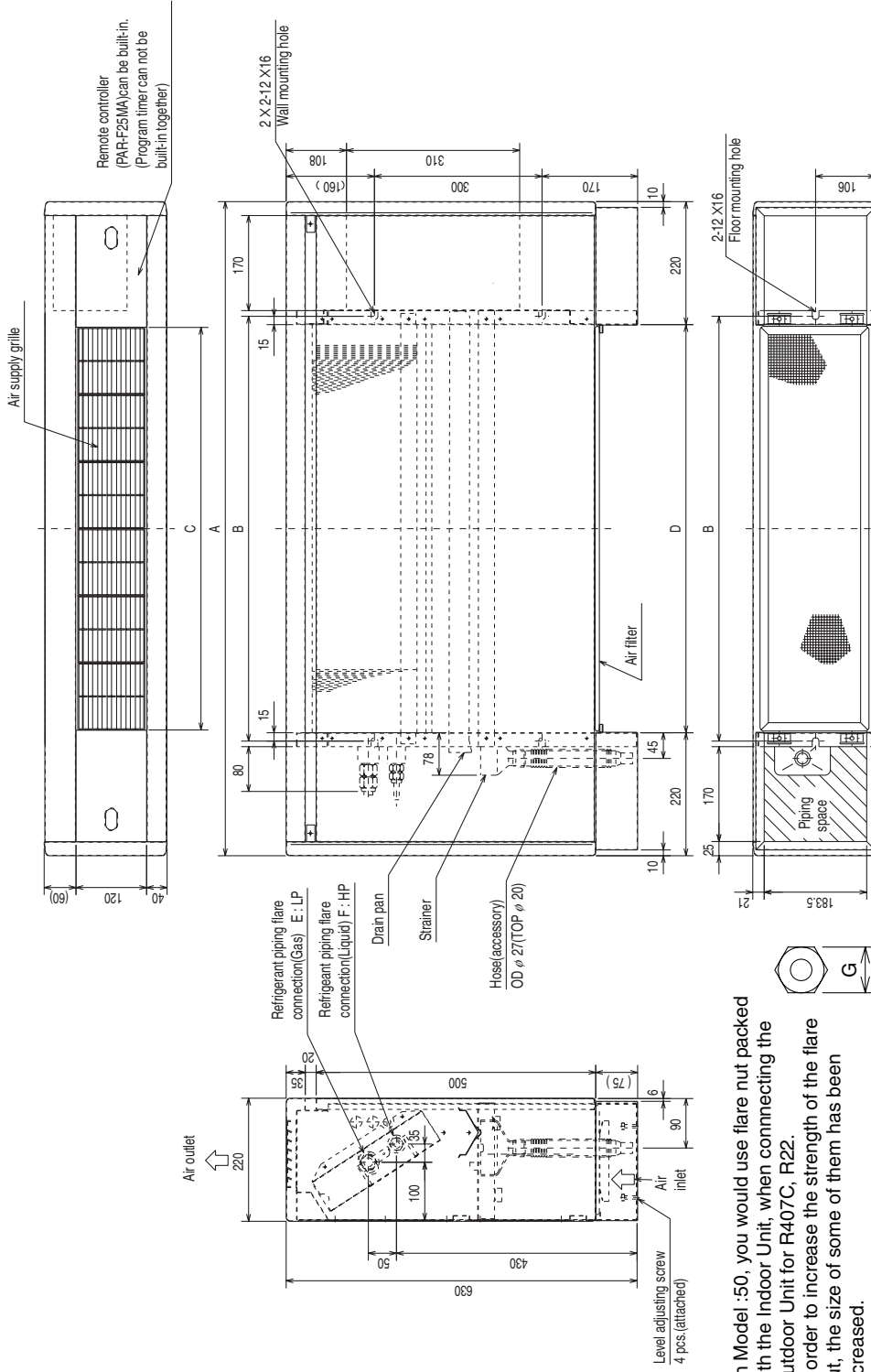


# 4

# OUTLINES AND DIMENSIONS

PFFY-P20-25-32-40-50-63VLEM-E

Unit:mm



- Note: 1. On Model :50, you would use flare nut packed with the Indoor Unit, when connecting the Outdoor Unit for R407C, R22.  
 2. In order to increase the strength of the flare nut, the size of some of them has been increased.

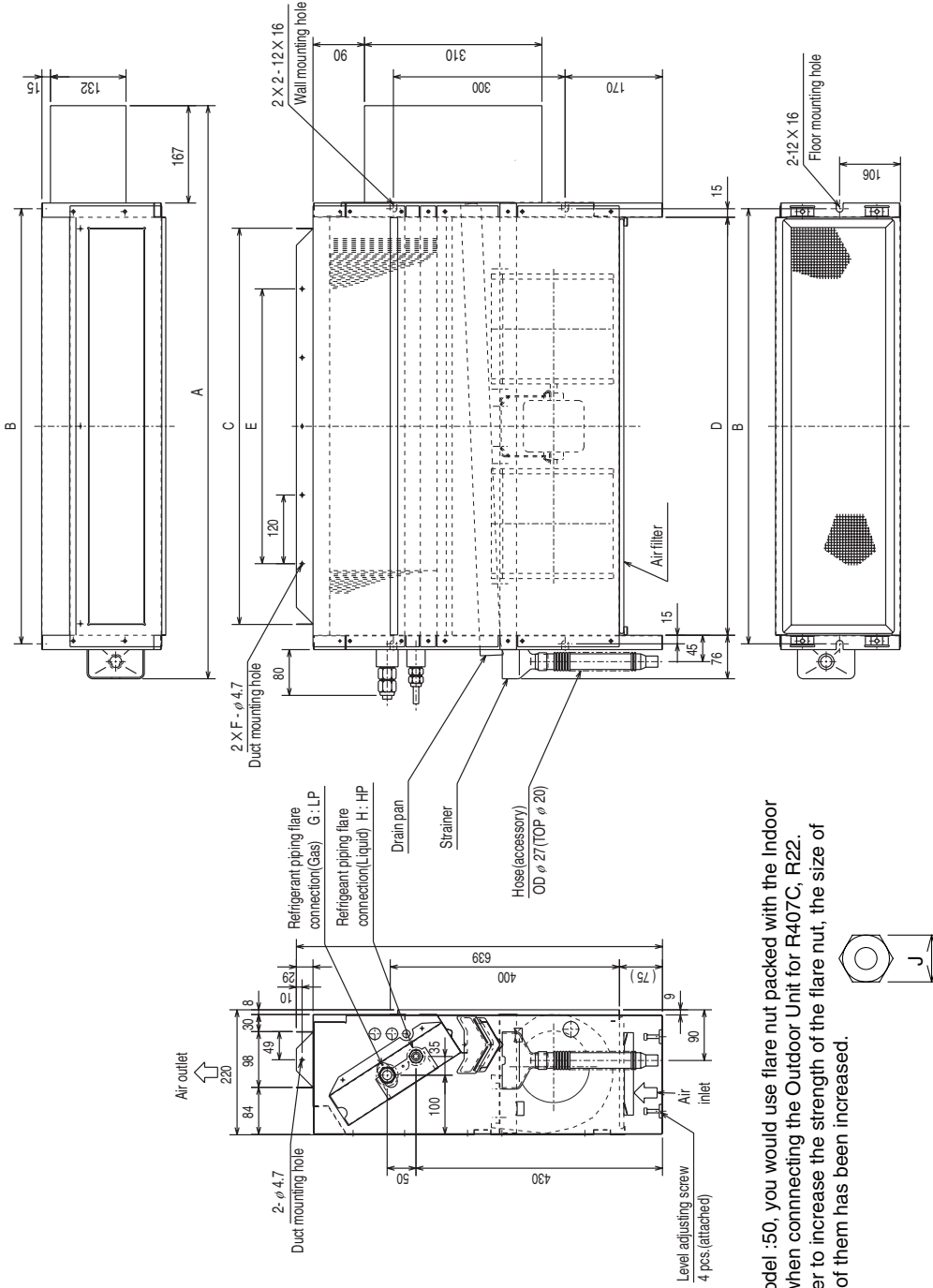
Dimensions

Model	A	B	C	D	E(Gas)	F(Liquid)	G(Liquid)	G(Gas)
PFFY-P20VLEM-E	1050	640	600	610	φ12.7	φ6.35	17	27
PFFY-P25VLEM-E	1050	640	600	610	φ12.7	φ6.35	17	27
PFFY-P32VLEM-E	1170	760	720	730	φ12.7	φ6.35	17	27
PFFY-P40VLEM-E	1170	760	720	730	φ12.7	φ6.35	17	27
PFFY-P50VLEM-E	1410	1000	960	970	*1 φ12.7 *2 φ15.88	*1 φ6.35 *2 φ9.52	*1 22 *2 22	*1 29 *2 29
PFFY-P63VLEM-E	1410	1000	960	970	φ15.88	φ9.52	22	29

\*1:R410A outdoor unit  
 \*2:The other outdoor unit

PFFY-P20-25-32-40-50-63VLRM-E

Unit:mm



Note: 1. On Model :50, you would use flare nut packed with the Indoor Unit, when connecting the Outdoor Unit for R407C, R22.  
 2. In order to increase the strength of the flare nut, the size of some of them has been increased.

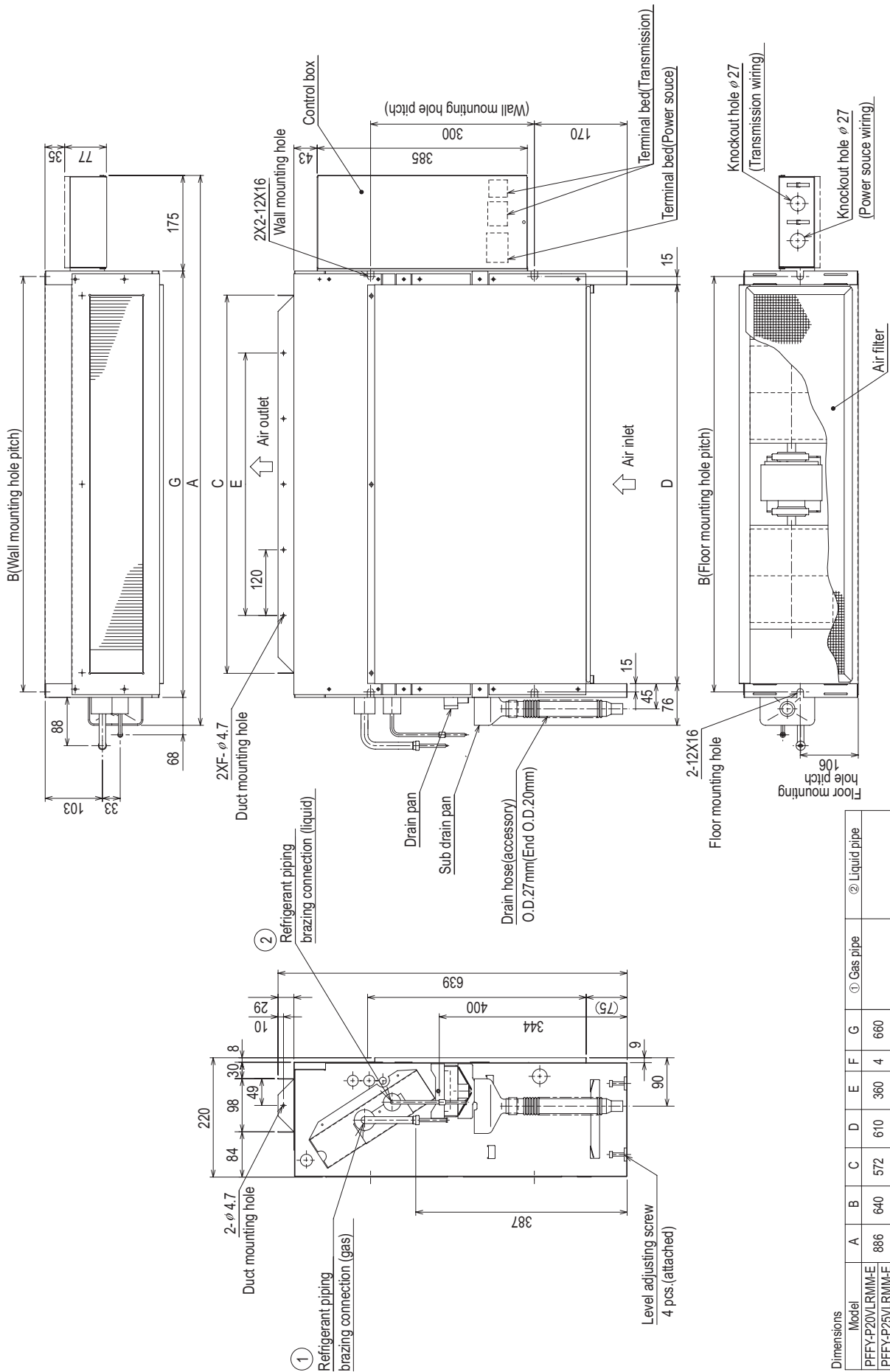
\*1:R410A outdoor unit  
 \*2:The other outdoor unit

Dimensions

Model	A	B	C	D	E	F	G (Gas)	H (Liquid)	J (Liquid)	J (Gas)
PFFY-P20VLRM-E	886	640	572	610	360	4	φ12.7	φ6.35	17	27
PFFY-P25VLRM-E	886	640	572	610	360	4	φ12.7	φ6.35	17	27
PFFY-P32VLRM-E	1006	760	692	730	480	5	φ12.7	φ6.35	17	27
PFFY-P40VLRM-E	1006	760	692	730	480	5	φ12.7	φ6.35	17	27
PFFY-P50VLRM-E	1246	1000	932	970	720	7	*1: φ12.7 *2: φ15.88	*1: φ6.35 *2: φ9.52	*1: 22 *2: 22	*1: 29 *2: 29
PFFY-P63VLRM-E	1246	1000	932	970	720	7	φ15.88	φ9.52	22	29

**[1] Outlines and Dimensions**

1. PFFY-P20, 25, 32, 40, 50, 63VLRMM-E



Dimensions Model	A	B	C	D	E	F	G	① Gas pipe		② Liquid pipe	
								$\phi$ 12.7	$\phi$ 15.88	$\phi$ 6.35	$\phi$ 9.52
PFFY-P20VLRMM-E	886	640	572	610	360	4	660				
PFFY-P25VLRMM-E	1006	760	692	730	480	5	780	$\phi$ 12.7		$\phi$ 6.35	
PFFY-P32VLRMM-E	1246	1000	932	970	720	7	1020	$\phi$ 15.88		$\phi$ 9.52	