



The **PEAD-M Standard Inverter** range is a ceiling concealed ducted system that blends a host of outstanding features with an unobtrusive design for easy installation and maintenance. Offering advanced control options and quiet operation, this range provides extreme flexibility and ease of installation whilst being cost effective.

Key Features

- Entire range only 250mm in height
- Wider range of external static pressure settings
- Drain pump included as standard
- Replace Technology available
- New single fan chassis on 12.5 and 14kW models

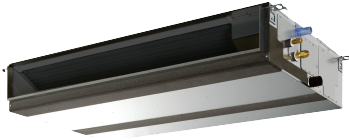


Air Conditioning

Product Information

PEAD-M R410A
Ceiling Concealed Ducted System
 Standard Inverter Heat Pump (Three Phase)

Making a
 World of
 Difference



PEAD-M - INDOOR UNITS		PEAD-M100JA	PEAD-M125JA	PEAD-M140JA
CAPACITY (kW)	Heating (nominal)	11.2 (2.8-12.5)	13.5 (4.8-15.0)	15.0 (4.9-15.8)
	Cooling (nominal)	9.4 (3.7-10.6)	12.1 (5.6-13.0)	13.6 (5.8-14.1)
	Heating (UK)	9.63 (2.41-10.75)	11.61 (4.13-12.9)	12.9 (4.21-13.59)
	Cooling (UK)	8.55 (3.37-9.65)	11.01 (5.1-11.83)	12.38 (5.28-12.83)
SHF (nominal)		0.82	0.84	0.84
COP / EER (nominal)		3.80 / 3.15	3.61 / 2.91	3.51 / 2.61
SCOP (nsh) / SEER (nsc) (BS EN14825)		4.0 / 5.1	3.77 (150.6%) / 4.82 (192.8%)	3.66 (146.3%) / 4.79 (191.7%)
ErP ENERGY EFFICIENCY CLASS	Heating/Cooling	A / A+	N/A	N/A
AIRFLOW (l/s)	Lo-Mi-Hi	400-483-567	492-592-700	533-650-767
PIPE SIZE mm (in)	Gas	15.88 (5/8")	15.88 (5/8")	15.88 (5/8")
	Liquid	9.52 (3/8")	9.52 (3/8")	9.52 (3/8")
EXTERNAL STATIC PRESSURE (Pa)		35-50-70-100-150	35-50-70-100-150	35-50-70-100-150
SOUND PRESSURE LEVEL (dBA)	Lo-Mi-Hi	29-34-38	33-36-40	34-38-43
SOUND POWER LEVEL (dBA)		62	66	67
DIMENSIONS (mm)	Width x Depth x Height	1400 x 732 x 250	1400 x 732 x 250	1600 x 732 x 250
WEIGHT (kg)		39	40	44
ELECTRICAL SUPPLY		Fed by Outdoor Unit	Fed by Outdoor Unit	Fed by Outdoor Unit
FUSE RATING (BS88) - HRC (A)		6	6	6
INTERCONNECTING CABLE No. Cores		4	4	4
WIRED REMOTE CONTROLLER REFERENCE		PAR-33MAA	PAR-33MAA	PAR-33MAA

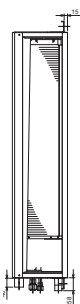
PUHZ-P - OUTDOOR UNITS		PUHZ-P100YKA ^③	PUHZ-P125YKA ^③	PUHZ-P140YKA ^③
SOUND PRESSURE LEVEL (dBA)	Heating/Cooling	54 / 51	56 / 54	57 / 56
SOUND POWER LEVEL (dBA)	Cooling	70	72	75
WEIGHT (kg)		78	85	85
DIMENSIONS (mm)	Width x Depth x Height	1050 x 330 x 981	1050 x 330 x 981	1050 x 330 x 981
ELECTRICAL SUPPLY		380-415v, 50Hz	380-415v, 50Hz	380-415v, 50Hz
PHASE		Three	Three	Three
SYSTEM POWER INPUT (kW)	Heating/Cooling (nominal)	2.93 / 2.98	3.73 / 4.15	4.27 / 5.21
	Heating/Cooling (UK)	2.64 / 2.47	3.36 / 3.44	3.84 / 4.32
STARTING CURRENT (A)		2.9	4.0	4.0
SYSTEM RUNNING CURRENT (A)	Heating/Cooling [MAX]	5.5 / 5.4 [11.5]	6.8 / 6.4 [11.5]	8.9 / 7.9 [11.5]
FUSE RATING (BS88) - HRC (A)		16	16	16
MAINS CABLE No. Cores		5	5	5
MAX PIPE LENGTH (m)		50	50	50
MAX HEIGHT DIFFERENCE (m)		30	30	30
CHARGE REFRIGERANT (kg) / CO ₂ EQUIVALENT (t)		3.30 / 6.89	3.80 / 7.93	3.80 / 7.93
	R410A (GWP 2088) - 30m			
MAX ADDITIONAL REFRIGERANT (kg) / CO ₂ EQUIVALENT (t)		1.20 / 2.51	1.20 / 2.51	1.20 / 2.51
	R410A (GWP 2088)			

^③ Three Phase

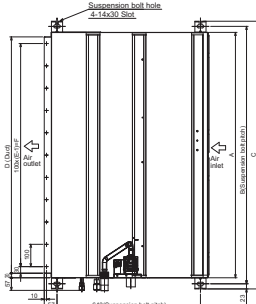
PRODUCT DIMENSIONS

PEAD-M35/50/60/71/100/125/140JA

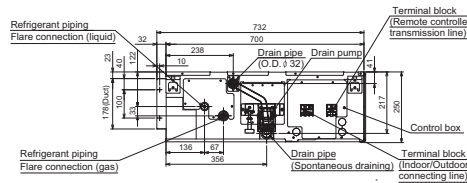
Front View



Upper View



Side View



Model	A	B	C	D	E	F
PEAD-M100,125JA	1400	1454	1500	1380	14	1300
PEAD-M140JA	1600	1654	1700	1560	16	1500



Telephone: 01707 282880
 email: air.conditioning@meuk.mee.com
 web: airconditioning.mitsubishielectric.co.uk

UNITED KINGDOM Mitsubishi Electric Europe Living Environment Systems Division
 Travellers Lane, Hatfield, Hertfordshire, AL10 8XB, England General Enquiries Telephone: 01707 282880 Fax: 01707 278881

IRELAND Mitsubishi Electric Europe Westgate Business Park, Ballymount, Dublin 24, Ireland
 Telephone: Dublin (01) 419 8890 Fax: Dublin (01) 419 8890 International code: (003531)

Country of origin: United Kingdom - Japan - Thailand - Malaysia. ©Mitsubishi Electric Europe 2018. Mitsubishi and Mitsubishi Electric are trademarks of Mitsubishi Electric Europe B.V. The company reserves the right to make any variation in technical specification to the equipment described, or to withdraw or replace products without prior notification or public announcement. Mitsubishi Electric is constantly developing and improving its products. All descriptions, illustrations, drawings and specifications in this publication present only general particulars and shall not form part of any contract. All goods are supplied subject to the Company's General Conditions of Sale, a copy of which is available on request. Third-party product and brand names may be trademarks or registered trademarks of their respective owners.

Note: The fuse rating is for guidance only. Please refer to the relevant databook for detailed specification. It is the responsibility of a qualified electrician/electrical engineer to select the correct cable size and fuse rating based on current regulation and site specific conditions. Mitsubishi Electric's air conditioning equipment and heat pump systems contain a fluorinated greenhouse gas, R410A (GWP:2088), R32 (GWP:675), R407C (GWP:1774) or R134a (GWP:1430). *These GWP values are based on Regulation (EU) No 517/2014 from IPCC 4th edition. In case of Regulation (EU) No.626/2011 from IPCC 3rd edition, these are as follows: R410A (GWP:1975), R32 (GWP: 550), R407C (GWP:1650) or R134a (GWP:1300).



www.greengateway.mitsubishielectric.co.uk
 Mitsubishi Electric UK's commitment to the environment

Follow us @meuk_Jes
 Follow us @green_gateway

Mitsubishi Electric
 Living Environmental Systems UK

mitsubishielectric2

thehub.mitsubishielectric.co.uk

Effective as of January 2018