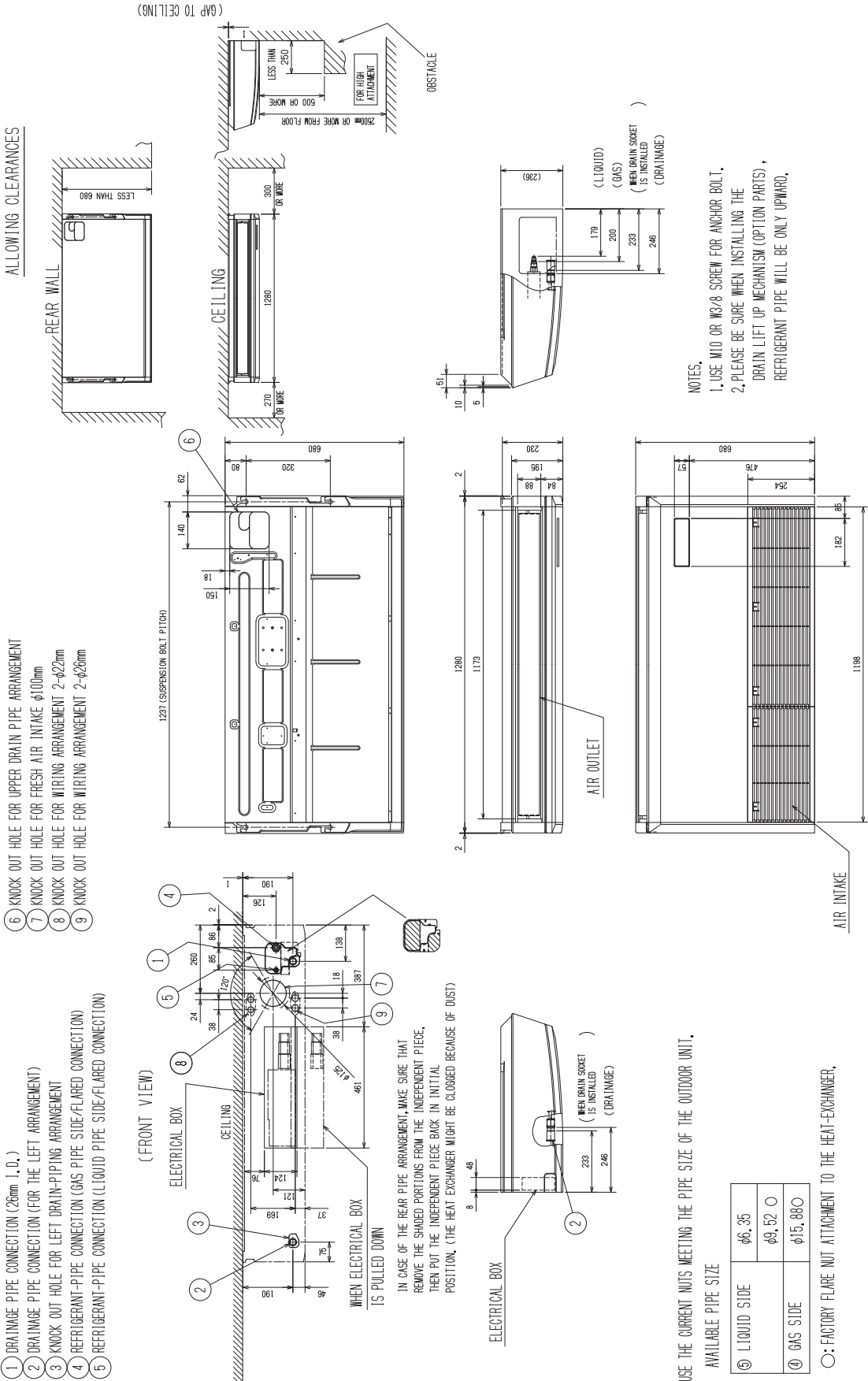


Unit : mm

PCFY-MS63VKM2-E
PCFY-MS63VKM2-ET



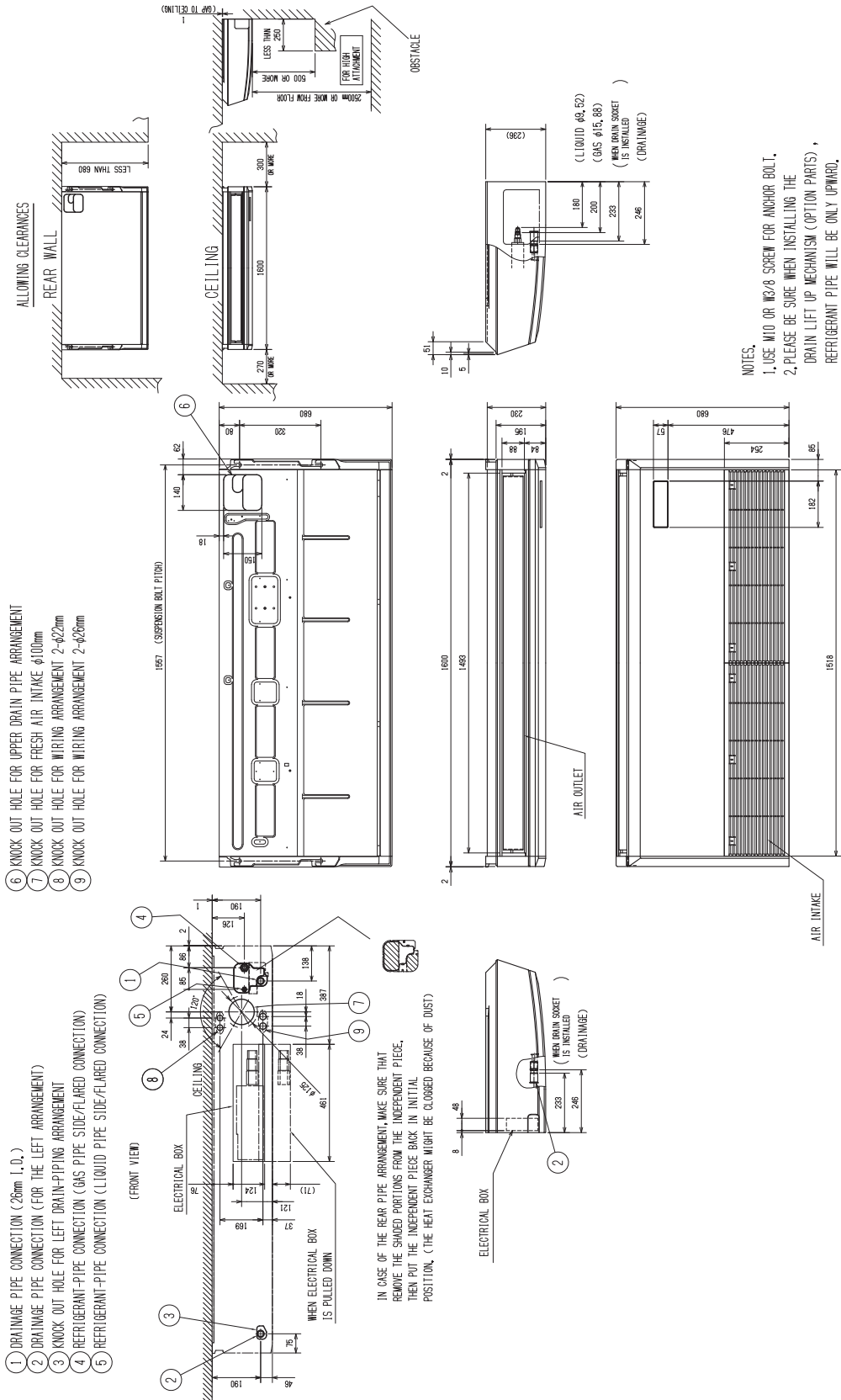
USE THE CURRENT NOTES MEETING THE PIPE SIZE OF THE OUTDOOR UNIT.

AVAILABLE PIPE SIZE

⑤ LIQUID SIDE	ϕ 6, 35
④ GAS SIDE	ϕ 9, 52 ϕ 15, 88 ϕ

○: FACTORY FLARE NOT ATTACHMENT TO THE HEAT-EXCHANGER.

PCFY-MS100VKM2-E
PCFY-MS125VKM2-E
PCFY-MS100VKM2-ET
PCFY-MS125VKM2-ET



NOTES,
 1. USE M10 OR M3/8 SCREW FOR ANCHOR BOLT.
 2. PLEASE BE SURE WHEN INSTALLING THE DRAIN LIFT UP MECHANISM (OPTION PARTS), REFRIGERANT PIPE WILL BE ONLY UPWARD.