

CMB-M104, 106, 108V-J1(-TR)

Unit: mm

- <Accessories>
- Drain hose I.D.32 ..... 1pc.
  - Tie band ..... 3pcs.
  - Square washer (with cushion) ..... 4pcs.
  - Square washer ..... 4pcs.

- Note 1. Suspension bolt(φ10) and nut(M10) prepare in the field.  
 2. Take notice of service space as shown.  
 (Please give attention not to occupy service space by letting ducts and pipes through.)  
 3. Install this product in a location where noise (refrigerant noise) emitted by the unit will not disturb the neighbors.  
 (For use in quiet environments with low background noise, position the BC CONTROLLER at least 5m away from any indoor units.)  
 4. Refer to the Installation Manual for refrigerant piping diameter size when connecting plural indoor units with 1 branch.  
 5. Refer to the Table-1 for connection pipe of outdoor unit diameter size.  
 6. Refer to the Installation Manual for insulation of connection pipe and drain piping.  
 7. Do not place the BC controller directly on the floor.

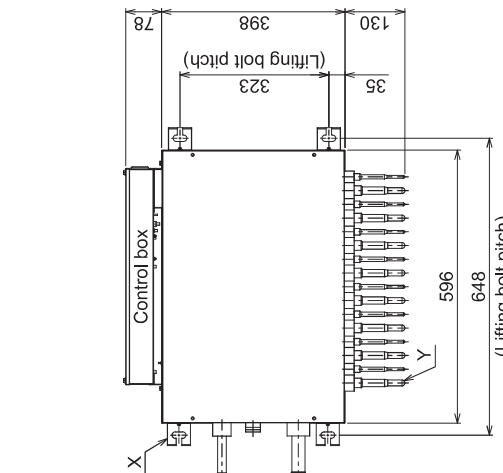
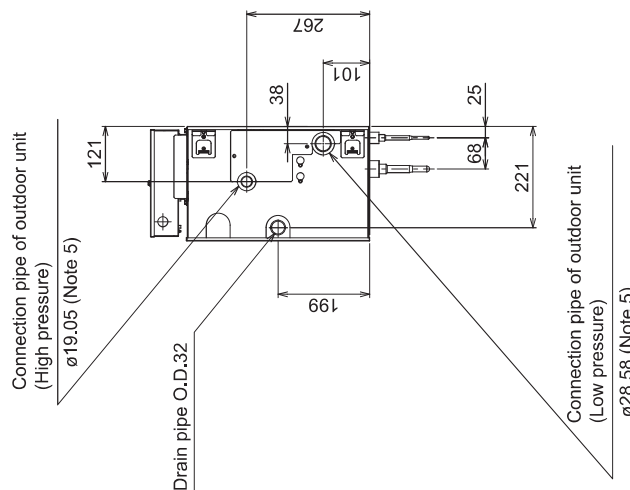
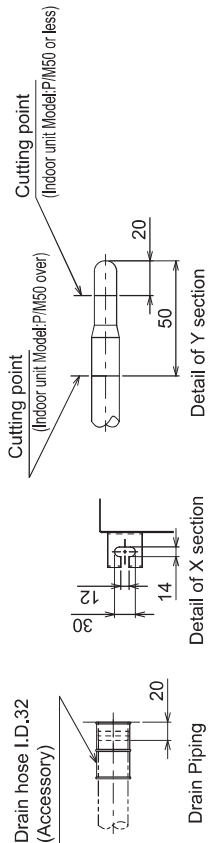
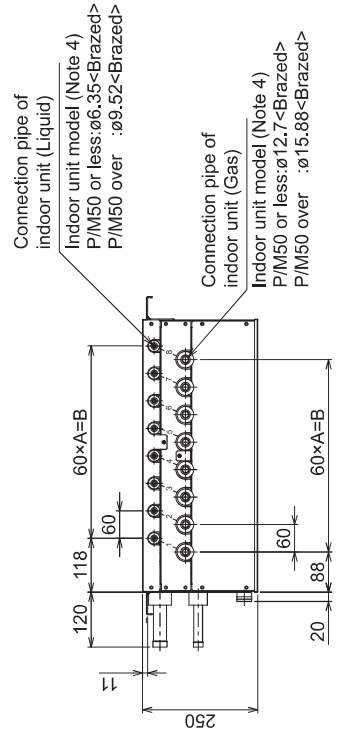
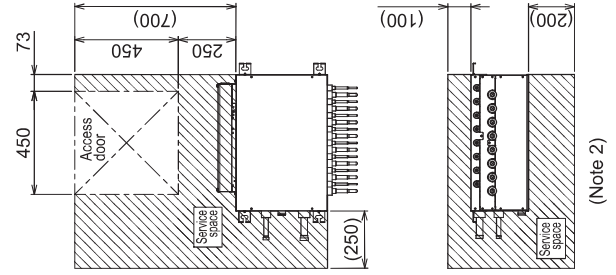


Table-1. To outdoor/heat source unit (Note.5)

Connectable unit capacity	High press. Pipe	Low press. Pipe
P200	φ15.88	φ19.05
P250, P300	φ19.05	φ22.2
P350	φ19.05 or φ22.2	φ28.58
M200	φ15.88	φ19.05
M250, M300	φ15.88	φ22.2

\*For the refrigerant pipe size, refer to Installation Manual of outdoor units/heat source units.



	A	B
CMB-M104V-J1(-TR)	3	180
CMB-M106V-J1(-TR)	5	300
CMB-M108V-J1(-TR)	7	420

CMB-M1012, 1016V-J1(-TR)

- <Accessories>  
 • Drain hose I.D.32 ..... 1pc.  
 • Tie band ..... 3pcs.  
 • Square washer (with cushion) ..... 4pcs.  
 • Square washer ..... 4pcs.

- Note 1. Suspension bolt(ø10) and nut(M10) prepare in the field.  
 2. Take notice of service space as shown.  
 (Please give attention not to occupy service space by letting ducts and pipes through.)  
 3. Install this product in a location where noise (refrigerant noise) emitted by the unit will not disturb the neighbors.  
 (For use in quiet environments with low background noise, position the BC CONTROLLER at least 5m away from any indoor units.)  
 4. Refer to the Installation Manual for refrigerant piping diameter size when connecting plural indoor units with 1 branch.  
 5. Refer to the Table-1 for connection pipe of outdoor unit diameter size.  
 6. Refer to the Installation Manual for insulation of connection pipe and drain piping.  
 7. Do not place the BC controller directly on the floor.

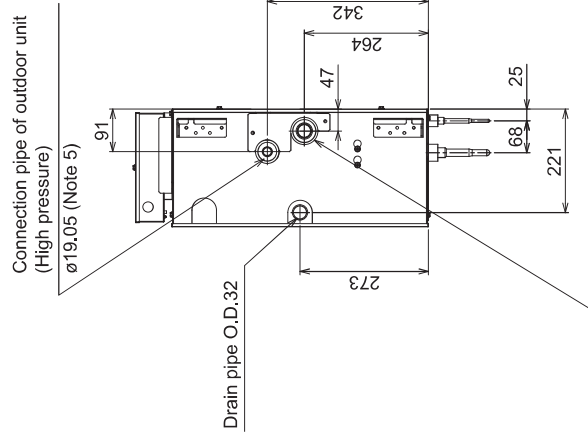
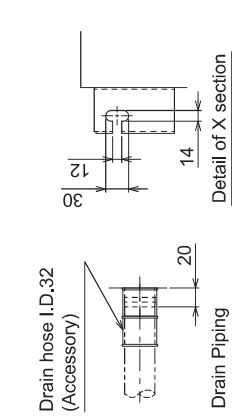
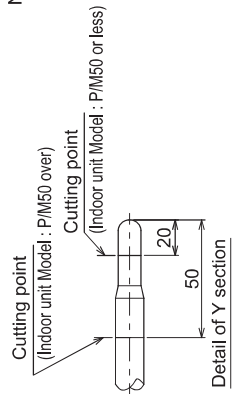
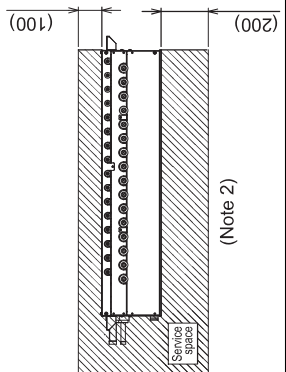
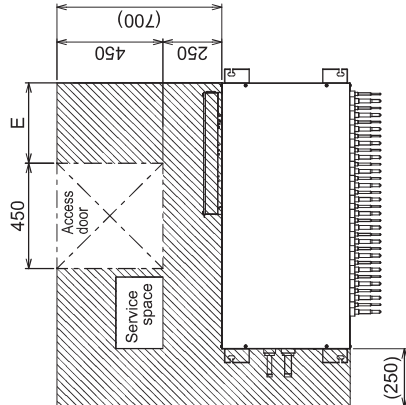


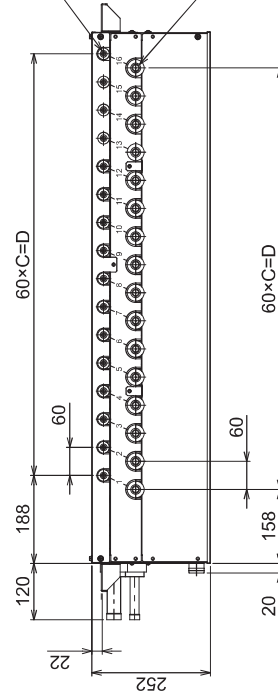
Table-1. To outdoor/heat source unit (Note.5)

Connectable unit capacity	High press. Pipe	Low press. Pipe
P200	ø15.88	ø19.05
P250, P300	ø19.05	ø22.2
P350	ø19.05 or ø22.2	ø28.58
M200	ø15.88	ø19.05
M250, M300	ø15.88	ø22.2

\*For the refrigerant pipe size, refer to Installation Manual of outdoor units/heat source units.



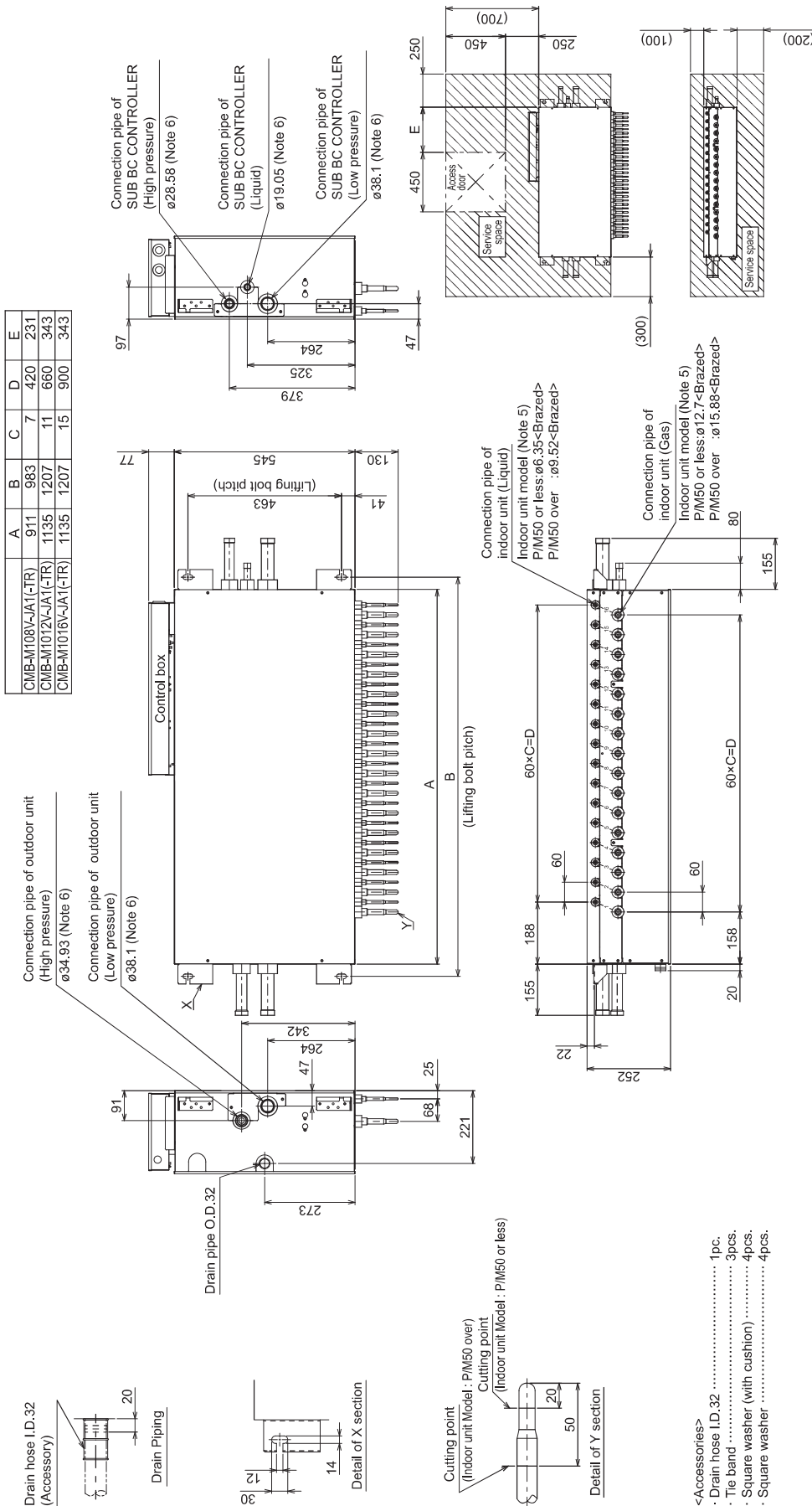
- Connection pipe of indoor unit (Liquid)  
 Indoor unit model (Note 4)  
 P/M50 or less: ø6.35<Brazed>  
 P/M50 over : ø9.52<Brazed>
- Connection pipe of indoor unit (Gas)  
 Indoor unit model (Note 4)  
 P/M50 or less: ø12.7<Brazed>  
 P/M50 over : ø15.88<Brazed>



	A	B	C	D	E
CMB-M1012V-J1(-TR)	911	983	11	660	231
CMB-M1016V-J1(-TR)	1135	1207	15	900	343

CMB-M108, 1012, 1016V-JA1(-TR)

Unit: mm



	A	B	C	D	E
CMB-M108V-JA1(-TR)	911	983	7	420	231
CMB-M1012V-JA1(-TR)	1135	1207	11	660	343
CMB-M1016V-JA1(-TR)	1135	1207	15	900	343

Table-2. To other BC controller (Note.6)

Total downstream Indoor unit capacity	High press. Pipe	Liquid Pipe	Low press. Pipe
P200	ø15.88	ø9.52	ø19.05
P201~300	ø19.05	ø9.52	ø22.2
P301~350	ø19.05	ø12.7	ø28.58
P351~400	ø22.2	ø12.7	ø28.58
P401~600	ø15.88	ø15.88	ø28.58
P601~650	ø28.58	ø19.05	ø34.93
P651~800	ø28.58	ø19.05	ø41.28
P801~1000	ø34.93	ø19.05	ø41.28
M200	ø15.88	ø9.52	ø19.05
M201~300	ø15.88	ø9.52	ø22.2
M301~350	ø15.88	ø12.7	ø28.58
M351~400	ø19.05	ø12.7	ø28.58
M401~450	ø19.05	ø15.88	ø28.58

Table-1. To outdoor/heat source unit (Note.6)

Connectable unit capacity	High press. Pipe	Low press. Pipe
P200, P300	ø15.88	ø19.05
P350	ø19.05 or ø22.2	ø22.2
P400 to P500	ø22.2	ø28.58
P550	ø22.2 or ø28.58	ø28.58
P600	ø22.2 or ø28.58	ø28.58 or ø34.93
P650	ø28.58	ø34.93
P700 to P800	ø28.58	ø41.28
P850, P900	ø15.88	ø19.05
M250, M300	ø15.88	ø22.2

- Note 1. Suspension bolt(ø10) and nut(M10) prepare in the field.
- Take notice of service space as shown.  
(Please give attention not to occupy service space by letting ducts and pipes through.)
- Please take service space for connection pipe of SUB BC CONTROLLER.
- Install this product in a location where noise (refrigerant noise) emitted by the unit will not disturb the neighbors.  
(For use in quiet environments with low background noise, position the BC CONTROLLER at least 5m away from any indoor units.)
- Refer to the Installation Manual for refrigerant piping diameter size when connecting plural indoor units with 1 branch.
- Refer to the Table-1,2 connection pipe of outdoor unit or SUB BC CONTROLLER diameter size.
- Refer to the Installation Manual for insulation of connection pipe and drain piping.
- Do not place the BC controller directly on the floor.

- <Accessories>
- Drain hose I.D. 32 ..... 1pc.
- Tie band ..... 3pcs.
- Square washer (with cushion) ..... 4pcs.
- Square washer ..... 4pcs.

CMB-P1016V-KA1(-TR)

Unit: mm

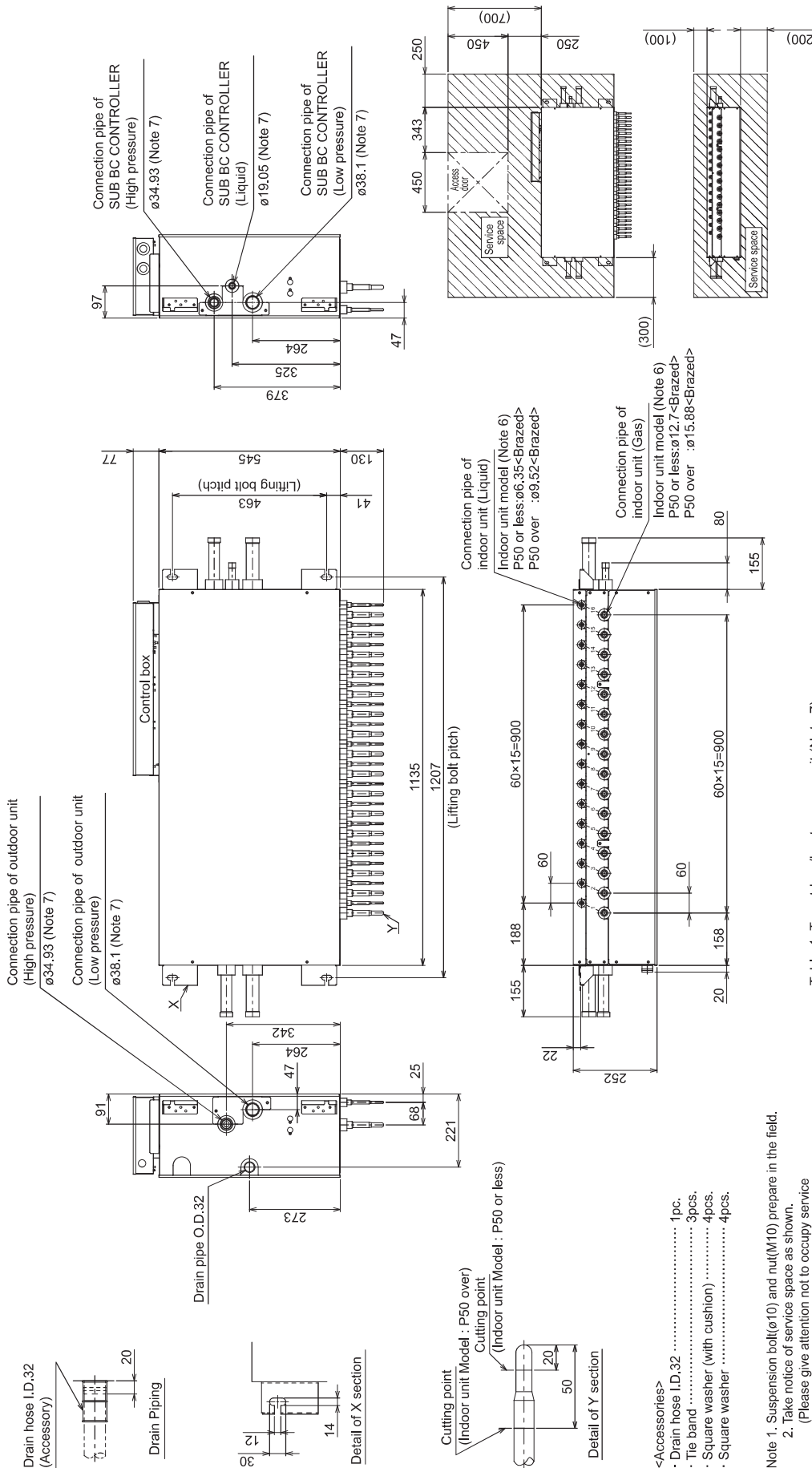


Table-1. To outdoor/heat source unit (Note 7)

Connectable unit capacity	High press. Pipe	Low press. Pipe
P200	ø15.88	ø19.05
P250, P300	ø19.05	ø22.2
P350	ø19.05 or ø22.2	ø28.58
P400 to P500	ø22.2	ø28.58
P550	ø22.2 or ø28.58	ø28.58
P600	ø22.2 or ø28.58	ø28.58 or ø34.93
P700 to P800	ø28.58	ø34.93
P850 to P1000	ø28.58	ø41.28
P1050 to P1100	ø34.93	ø41.28

Table-2. To other BC controller (Note 7)

Total downstream Indoor unit capacity	High press. Pipe	Liquid Pipe	Low press. Pipe
~P200	ø15.88	ø9.52	ø19.05
P201~300	ø19.05	ø9.52	ø22.2
P301~350	ø19.05	ø12.7	ø28.58
P351~400	ø22.2	ø12.7	ø28.58
P401~400	ø22.2	ø15.88	ø28.58
P601~650	ø28.58	ø15.88	ø28.58
P651~800	ø28.58	ø19.05	ø34.93
P801~1000	ø28.58	ø19.05	ø41.28
P1001~	ø34.93	ø19.05	ø41.28

- Note 1. Suspension bolt(ø10) and nut(M10) prepare in the field.  
 2. Take notice of service space as shown.  
 (Please give attention not to occupy service space by letting ducts and pipes through.)  
 3. Please take service space for connection pipe of SUB BC CONTROLLER.  
 4. When using an outdoor unit-38HP(P950) or more, use this product.  
 5. Install this product in a location where noise (refrigerant noise) emitted by the unit will not disturb the neighbors.  
 (For use in quiet environments with low background noise, position the BC CONTROLLER at least 5m away from any indoor units.)  
 6. Refer to the Installation Manual for refrigerant piping diameter size when connecting plural indoor units with 1 branch.  
 7. Refer to the Table-1, 2 for connection pipe of outdoor unit or SUB BC CONTROLLER diameter size.  
 8. Refer to the Installation Manual for insulation of connection pipe and drain piping.  
 9. Do not place the BC controller directly on the floor.

- <Accessories>  
 - Drain hose I.D.32 ..... 1pc.  
 - Tie band ..... 3pcs.  
 - Square washer (with cushion) ..... 4pcs.  
 - Square washer ..... 4pcs.

CMB-M104, 108V-KB1(-TR)

Unit: mm

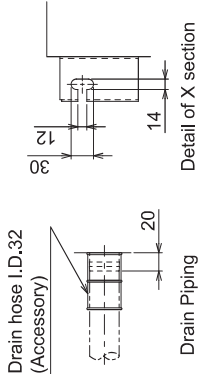
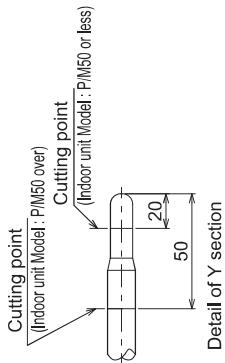
- Note 1. Suspension bolt(ø10) and nut(M10) prepare in the field.  
 2. Take notice of service space as shown.  
 (Please give attention not to occupy service space by letting ducts and pipes through.)  
 3. Can't use singleness. (MAIN BC CONTROLLER is necessary.)  
 4. Install this product in a location where noise (refrigerant noise) emitted by the unit will not disturb the neighbors.  
 (For use in quiet environments with low background noise, position the BC CONTROLLER at least 5m away from any indoor units.)  
 5. Refer to the Installation Manual for refrigerant piping diameter size when connecting plural indoor units with 1 branch.  
 6. Refer to the Table-1 for connection pipe of MAIN BC CONTROLLER.  
 7. Refer to the Installation Manual for insulation of connection pipe and drain piping.  
 8. Do not place the BC controller directly on the floor.

<Accessories>

- Drain hose I.D.32 ..... 1pc.
- Tie band ..... 3pcs.
- Square washer (with cushion) ..... 4pcs.
- Square washer ..... 4pcs.

Table-1. To other BC controller (Note.6)

Total downstream Indoor unit capacity	High press. Pipe	Liquid Pipe	Low press. Pipe
~P200	ø15.88	ø9.52	ø19.05
P201~300	ø19.05	ø9.52	ø22.2
P301~350	ø19.05	ø12.7	ø28.58
P351~400	ø22.2	ø12.7	ø28.58
P401~600	ø22.2	ø15.88	ø28.58
P601~650	ø28.58	ø15.88	ø28.58
P651~800	ø28.58	ø19.05	ø34.93
P801~1000	ø28.58	ø19.05	ø41.28
P1001~	ø34.93	ø19.05	ø41.28
~M200	ø15.88	ø9.52	ø19.05
M201~300	ø15.88	ø9.52	ø22.2
M301~350	ø15.88	ø12.7	ø28.58
M351~400	ø19.05	ø12.7	ø28.58
M401~450	ø19.05	ø15.88	ø28.58

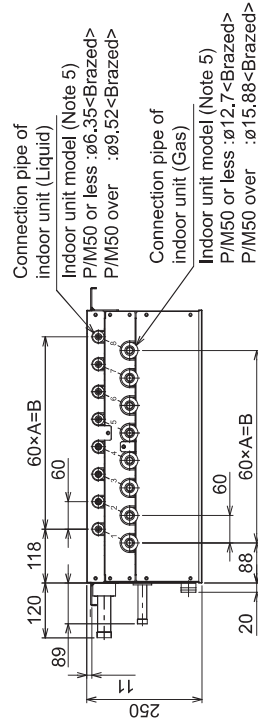
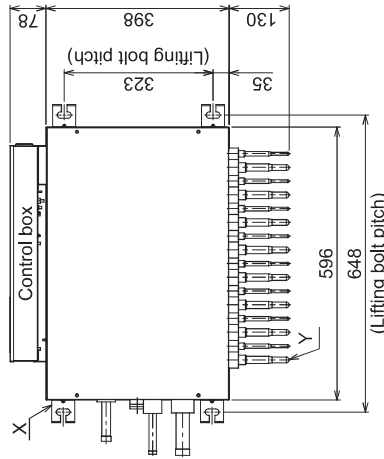


Connection pipe of MAIN BC CONTROLLER (High pressure) ø19.05 (Note 6)

Drain pipe O.D.32

Connection pipe of MAIN BC CONTROLLER (Liquid) ø15.88 (Note 6)

Connection pipe of MAIN BC CONTROLLER (Low pressure) ø28.58 (Note 6)



	A	B
CMB-M104V-KB1(-TR)	3	180
CMB-M108V-KB1(-TR)	7	420

