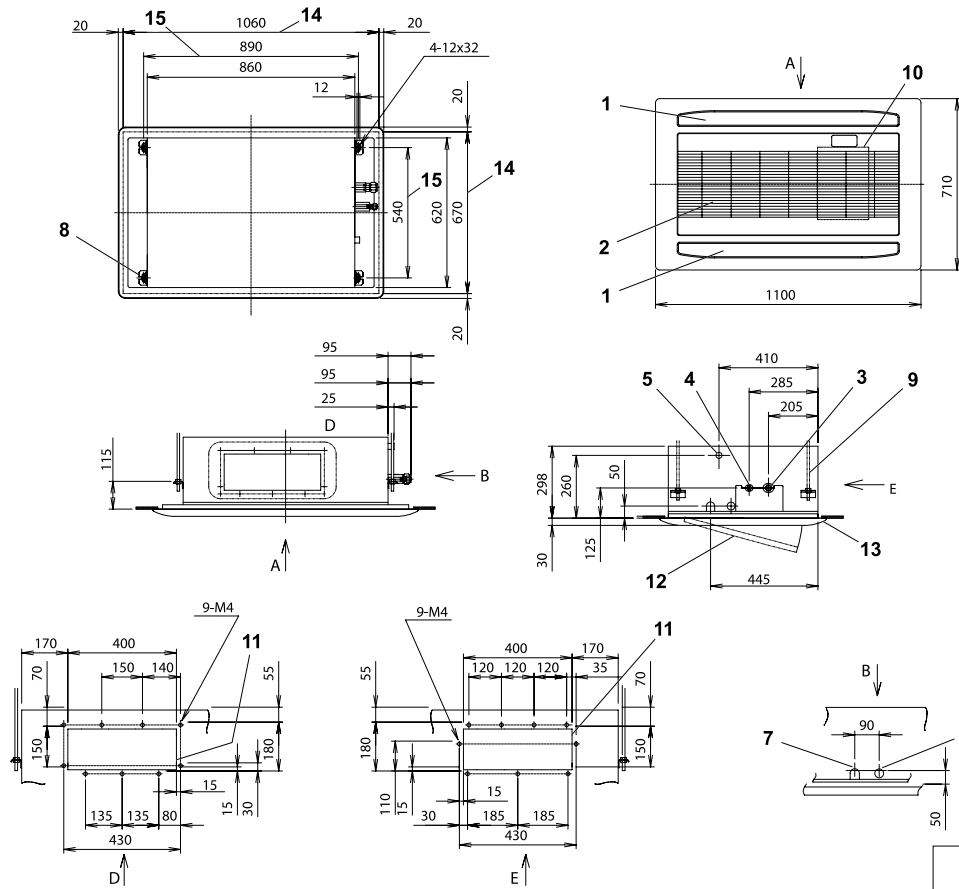


7.1.4 RCD-(1.0-5.0)FSN2 - 2-way cassette

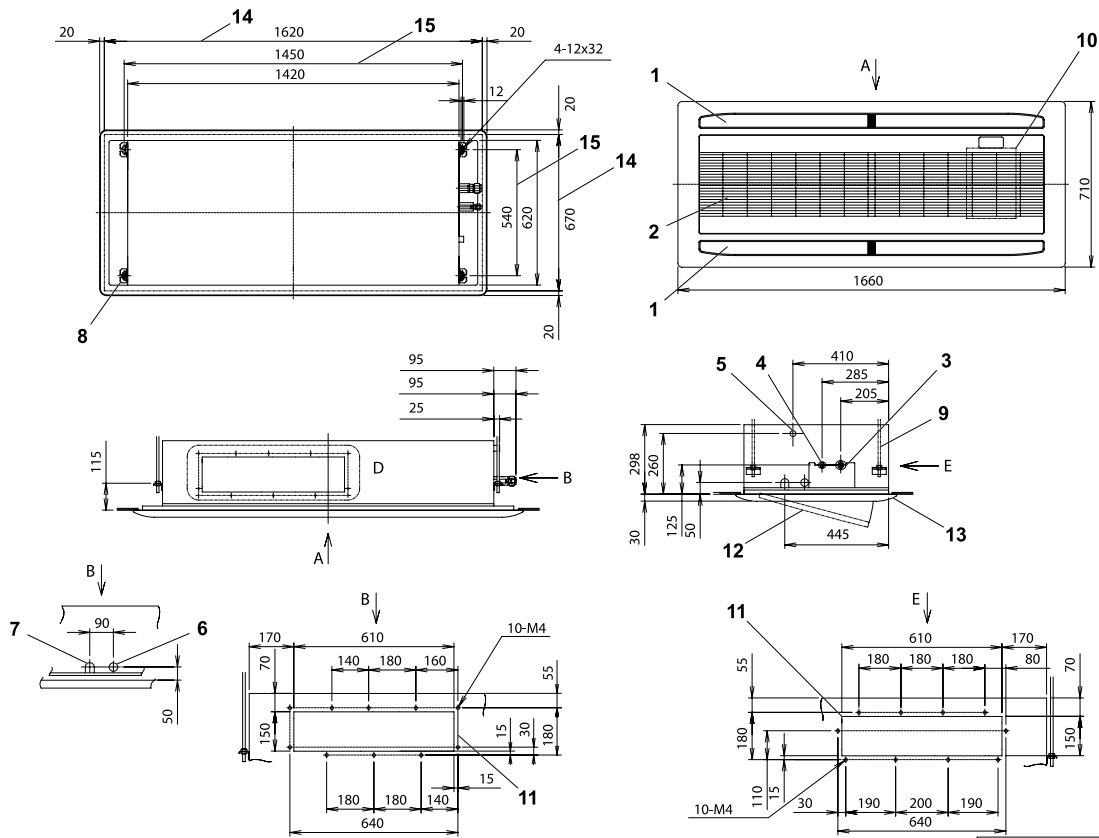
◆ **RCD-(1.0-3.0)FSN2 - 2-way cassette**



No.	Description	Remarks
1	Air outlet	
2	Air inlet	
3	Refrigerant connection (gas)	Flare nut. RCD-(1.0/1.5), ϕ 12.7; RCD-(2.0-3.0), ϕ 15.88
4	Refrigerant connection (liquid)	Flare nut. RCD-(1.0-2.0), ϕ 6.35; RCD-(2.5/3.0), ϕ 9.53
5	Drain connection	ϕ 32
6	Wiring hole	ϕ 32.5
7	Wiring hole	30 x 39
8	Unit suspension bracket	
9	Unit suspension bolt	(4x) M10 or W3/8
10	Electric control box	
11	Air supply duct connection	(2x) 150 x 400
12	Air inlet grille	
13	Optional air panel	P-N23DNA
14	Size of housing opening required in ceiling	
15	Distance measurements between unit suspension bolts	

All measurements are in mm.

◆ RCD-(4.0/5.0)FSN2 - 2-way cassette



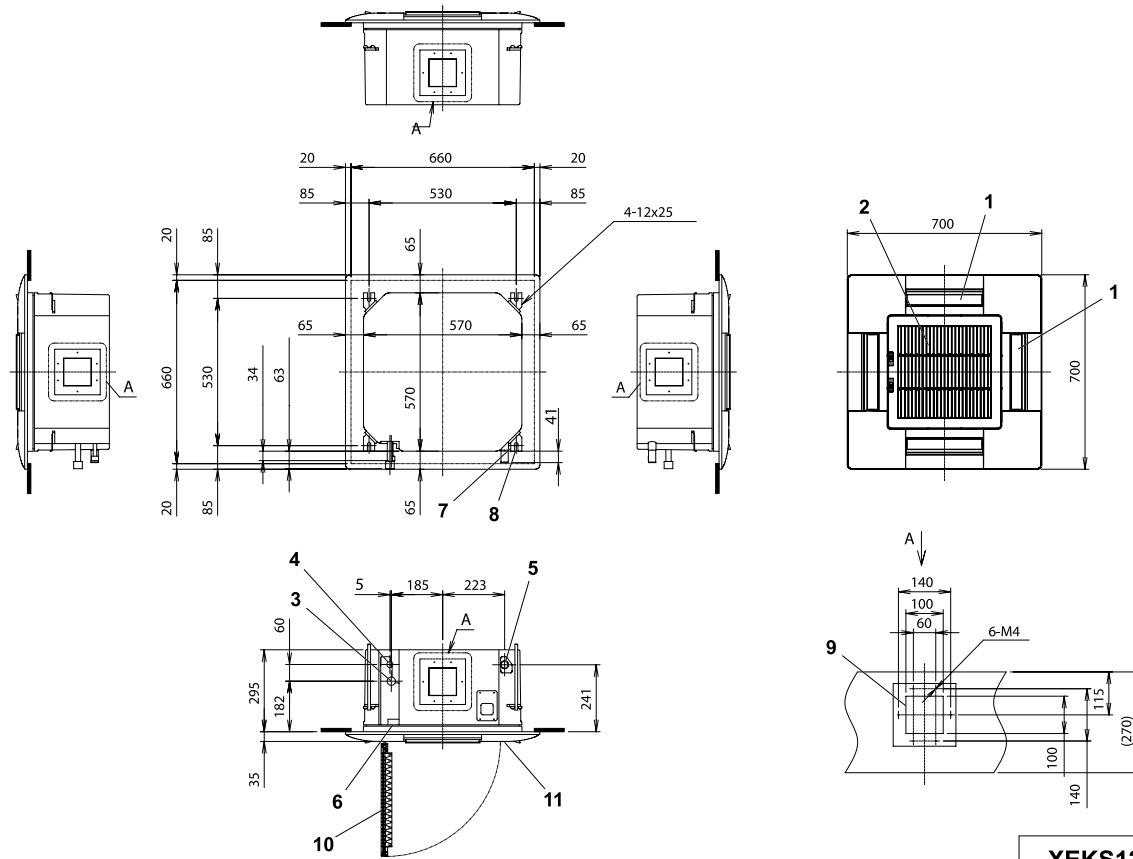
XEKS1265



No.	Description	Remarks
1	Air outlet	
2	Air inlet	
3	Refrigerant connection (gas)	Flare nut, $\phi 15.88$
4	Refrigerant connection (liquid)	Flare nut, $\phi 9.53$
5	Drain connection	$\phi 32$
6	Wiring hole	$\phi 32.5$
7	Wiring hole	30 x 39
8	Unit suspension bracket	
9	Unit suspension bolt	(4x) M10 or W3/8
10	Electric control box	
11	Air supply duct connection	(2x) 150 x 610
12	Air inlet grille	
13	Optional air panel	P-N46DWA
14	Size of housing opening required in ceiling	
15	Distance measurements between unit suspension bolts	

All measurements are in mm.

7.1.3 RCIM-(0.8-2.0)FSN2 - 4-way cassette (compact)



XEKS1256



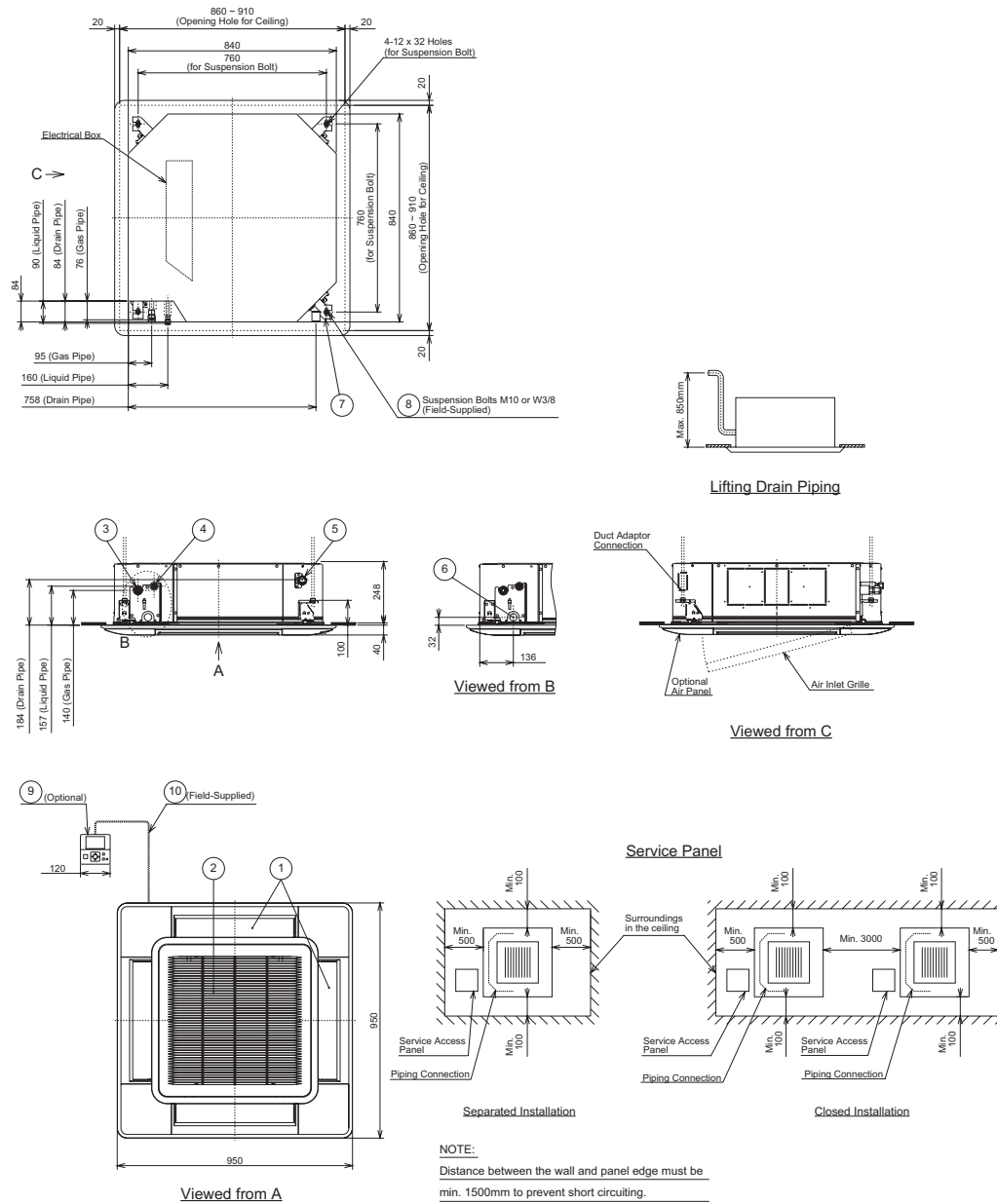
No.	Description	Remarks
1	Air outlet	4-way
2	Air inlet	
3	Refrigerant connection (gas)	Flare nut. RCIM-(1.0/1.5), $\phi 12.7$; RCIM-(2.0), $\phi 15.88$
4	Refrigerant connection (liquid)	Flare nut, $\phi 6.35$
5	Drain connection	$\phi 32$
6	Wiring hole	20 x 40
7	Unit suspension bracket	
8	Unit suspension (bolt distance)	(4x) M10 or W3/8
9	Air supply duct connection	Die cut hole 100 x 100
10	Air inlet grille	
11	Optional air panel	P-N23WAM

All measurements are in mm.

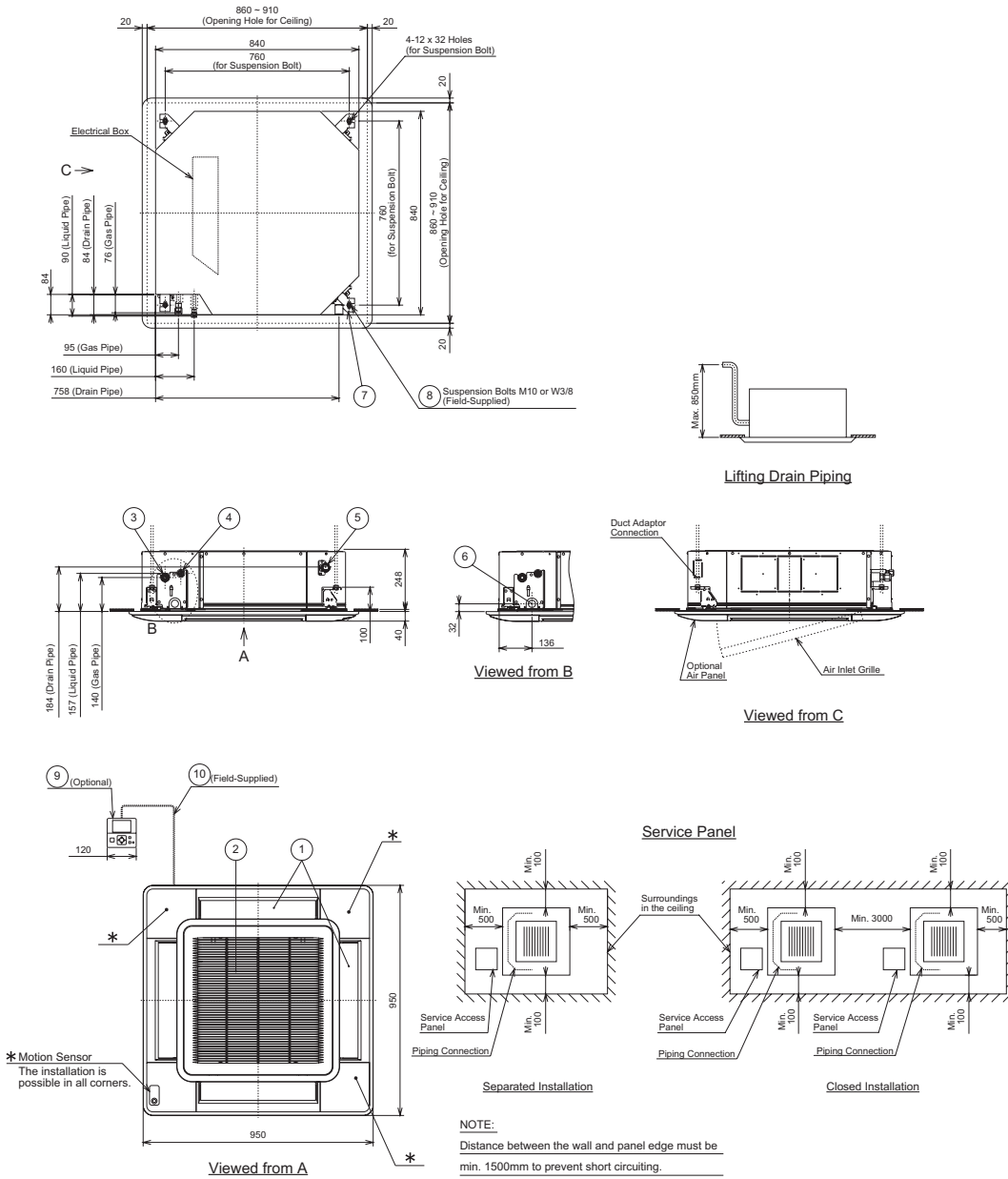
7.1 Dimensions

7.1.1 RCI-(1.0-6.0)FSN3 - 4 way cassette

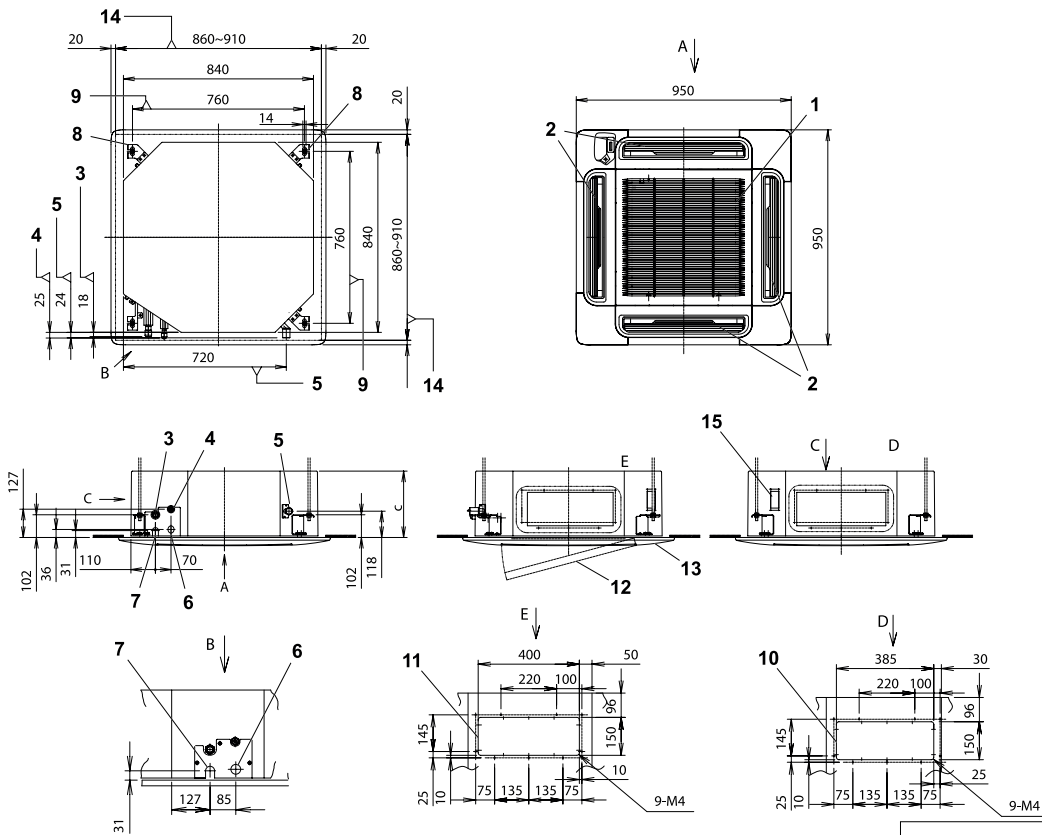
◆ RCI-(1.0-2.5)FSN3 with panel P-AP160NA1



◆ RCI-(1.0-2.5)FSN3 with panel P-AP160NAE



7.1.2 RCI-(1.0-6.0)FSN3Ei - 4-way cassette

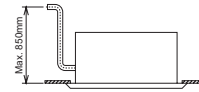
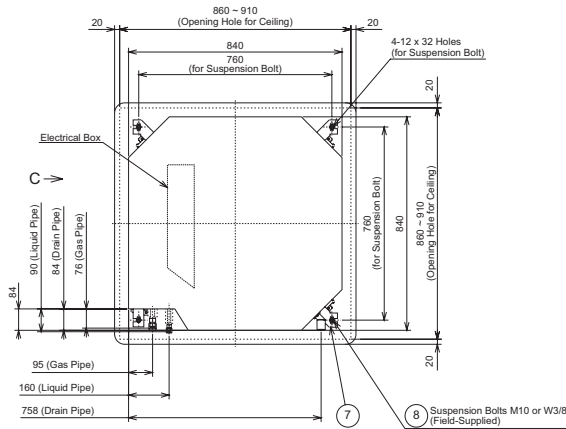


XEKS1231

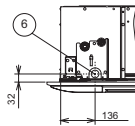
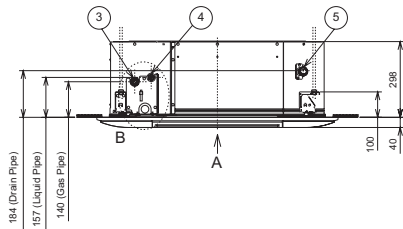
No.	Description	Remarks
1	Air inlet	
2	Air outlet	4-way
3	Refrigerant connection (gas)	Flare nut. RCI-(1.0/1.5), ϕ 12.7; RCI-(2.0-6.0), ϕ 15.88
4	Refrigerant connection (liquid)	Flare nut. RCI-(1.0-2.0), ϕ 6.35; RCI-(2.5-6.0), ϕ 9.53
5	Drain connection	ϕ 32
6	Wiring hole	Die cut hole. ϕ 32.5
7	Wiring hole	30 x 39
8	Unit suspension bracket	
9	Unit suspension bolt	(4x) M10 or W3/8
10	Air supply duct connection	Die cut hole 150 x 385
11	Additional air supply duct connection	Die cut hole 150 x 400
12	Air inlet grille	
13	Optional air panel	P-N23NA
14	Size of housing opening required in ceiling	
15	Fresh air intake	(4x) 14 x 26
c	Unit height	RCI-(1.0-2.5), 248; RCI-(3.0-6.0), 298

All measurements are in mm.

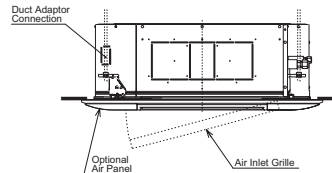
◆ RCI-(3.0-6.0)FSN3 with panel P-AP160NA1



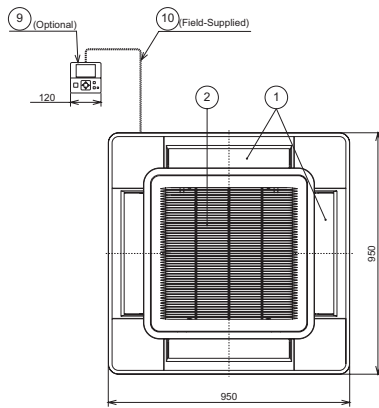
Lifting Drain Piping



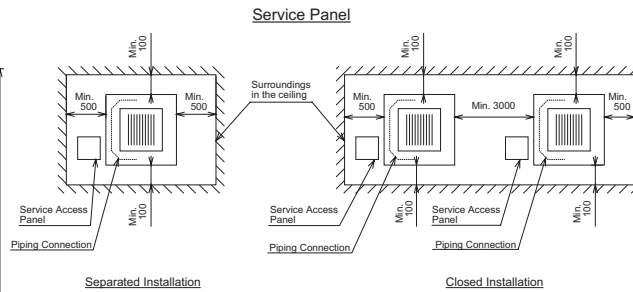
Viewed from B



Viewed from C



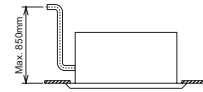
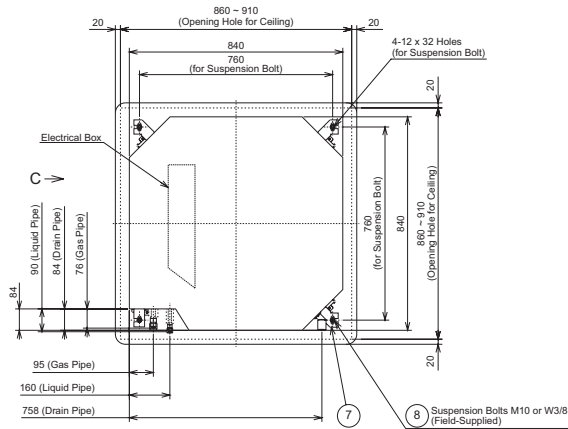
Viewed from A



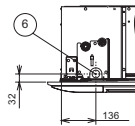
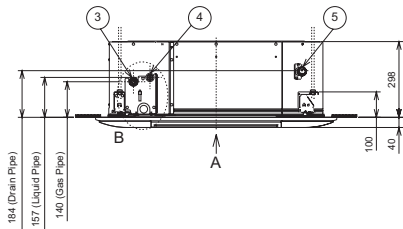
NOTE:
Distance between the wall and panel edge must be min. 1500mm to prevent short circuiting.



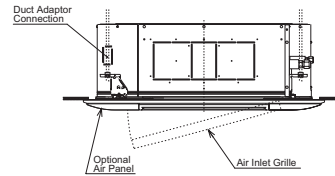
◆ RCI-(3.0-6.0)FSN3 with panel P-AP160NAE



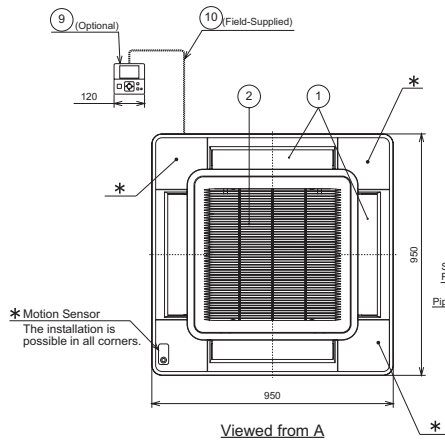
Lifting Drain Piping



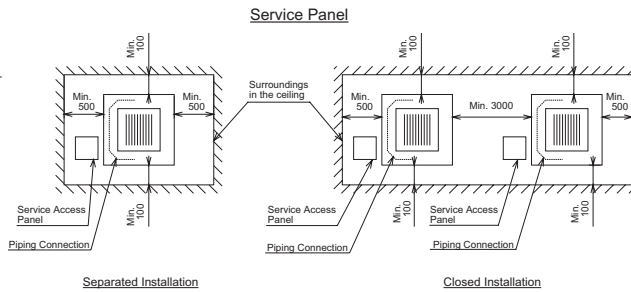
Viewed from B



Viewed from C



Viewed from A



NOTE:
Distance between the wall and panel edge must be min. 1500mm to prevent short circuiting.

