



Lossnay Mechanical Ventilation Heat Recovery (MVHR) systems, are designed to supply fresh air into any commercial building whilst simultaneously extracting stale air and, most importantly, recovering valuable heat energy for maximum efficiency

Key Features

- Clean fresh air
- Improved air quality and comfort
- Increased climate control
- Reduced energy bills
- Energy efficient heat recovery
- Low power consumption and SFP's
- Free cooling function
- Total heat exchange (sensible and latent)
- Significantly reduced height

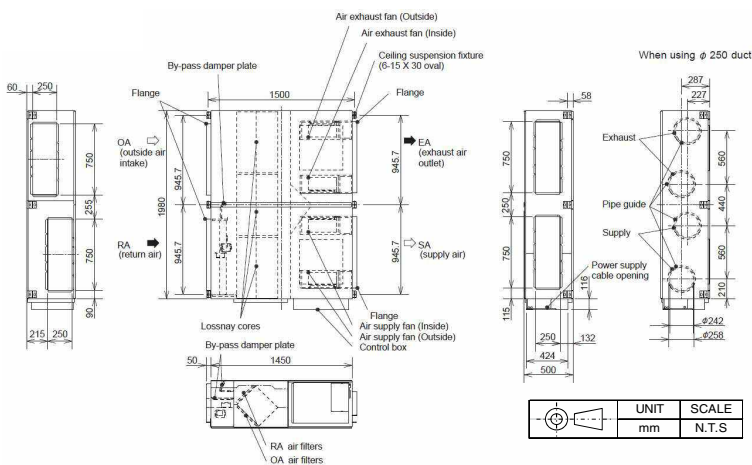


Air Conditioning | Heating
Ventilation | Controls



COMMERCIAL MODELS			LGH-250RVXT-E
ELECTRICAL POWER SUPPLY			220-240V, 50Hz
RUNNING CURRENT (A)		SP1	0.57
		SP2	1.40
		SP3	3.60
		SP4	7.60
INPUT POWER (W)		SP1	82
		SP2	244
		SP3	687
		SP4	1446
AIRFLOW (m³/h)²		SP1	625
		SP2	1250
		SP3	1875
		SP4	2500
AIRFLOW (l/s)²		SP1	174
		SP2	347
		SP3	521
		SP4	694
SPECIFIC FAN POWER (W/(l/s))		SP1	0.47
		SP2	0.70
		SP3	1.32
		SP4	2.08
EXTERNAL STATIC PRESSURE (Pa)		SP1	11
		SP2	44
		SP3	98
		SP4	175
SOUND PRESSURE LEVEL (dBA)		SP1	24
		SP2	32
		SP3	39
		SP4	43
TEMPERATURE EXCHANGE EFFICIENCY (%)		SP1	82.5
		SP2	80.5
		SP3	79
		SP4	77
ENTHALPY EXCHANGE EFFICIENCY (%)	Heating	SP1	79
		SP2	74
		SP3	71.5
		SP4	68
	Cooling	SP1	76.5
		SP2	71.5
		SP3	69
		SP4	65.5
WEIGHT (kg)			198
DIMENSIONS (mm) Width x Depth x Height			1980 x 1500 x 500
DUCT SIZE (mm)			250 x 750
STANDARD FILTER¹			EU-G3
FUSE RATING (BS88) – HRC (A)			10

DIMENSIONS



REMOTE CONTROLLER

PZ-61DR-E



- Control up to 15 Lossnay units
- Full-dot backlit LCD screen
- Weekly timer (ability to pre-set air volume requirements at different intervals)
- Night purge function



Notes: Running Current, Input Power and Recovery Efficiency are based on the above airflow rate, power supply 240V, 50Hz. Sound Pressure Level measured at 1.5m under the centre of panel. *1: EU-F7 filter available as optional parts. *2: Airflow tested to Japan industrial standard JIS B 8628. SP1, SP2, SP3 & SP4 relate to the fan speeds of the Lossnay RVXT units i.e. fanspeed 1, 2, 3 & 4.

Lossnay Housings will be available, please contact Mitsubishi Electric for further information.