



BATTLE CARD

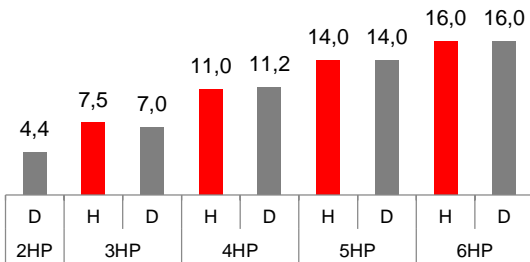
MONOBLOC ATW HP - Hitachi vs Competitor D

HEATING – 10.2016

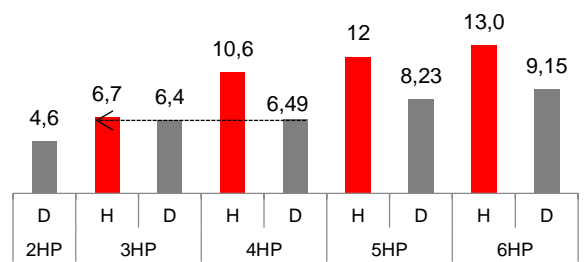
1 HEATING CAPACITIES → HIGH PERFORMANCES

HITACHI

Nominal heating capacity A7/W35



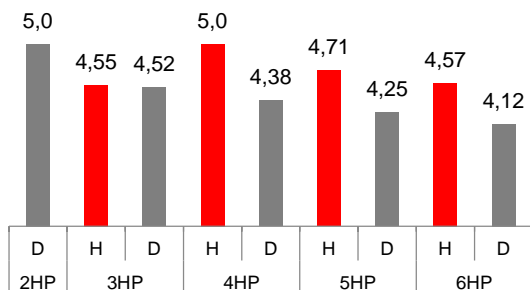
Max heating capacity A-7/W35



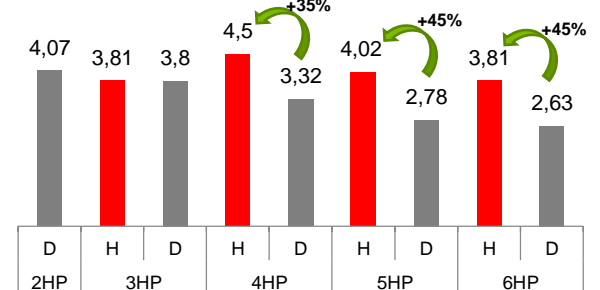
- Analyzing max capacity at -7°C, units seem equivalent but HITACHI heat pumps are finally much more performant.
- Competitor D range maximum capacity is 9,15kW at -7 °C: possible applications are limited.

2 COP COMPARISONS → HIGH EFFICIENCY

COP A7/W35



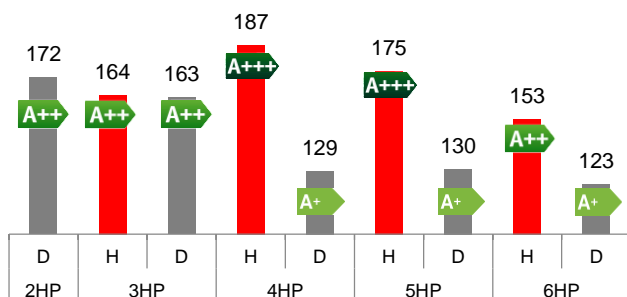
EER A35/W18



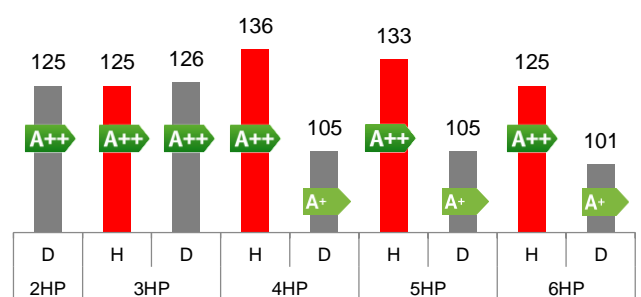
- Yutaki M is an **economic & efficient solution all year long**. Energy efficiency is ensured for both types of usages: heating & cooling.

3 ERP DATAS' COMPARISON → BEST SEASONAL PERFORMANCES

Nominal energy efficiency 35° C (ηs)



Nominal energy efficiency 55° C (ηs)

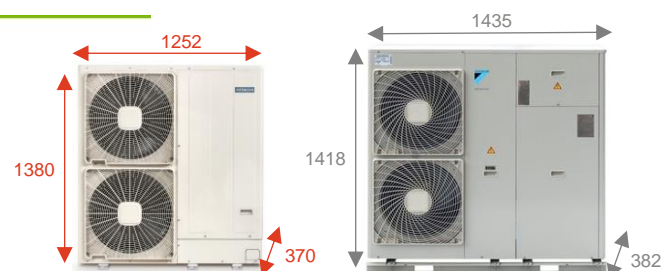


- Hitachi units go beyond 2017 regulatory requirements with 2 models already **A+++**: best in class performances!

4 ADVANCED DESIGN

- Hitachi designed the new Yutaki range so that installation becomes **easy, simple & quick** for all installers!

- Outdoor units from 4 to 6HP (double fans) are:
 - 18% more compact than competitor's equivalent units.
 - on average 50kg lighter than competitor's equivalent units.



5 EFFICIENT ACCESSORIES

2ND CIRCUIT KIT

- Competitor needs 2 water pumps → double energy consumption.
- Additional controller is required for Competitor D, function is not standard as it is for all YUTAKI.

BOILER COMBINATION

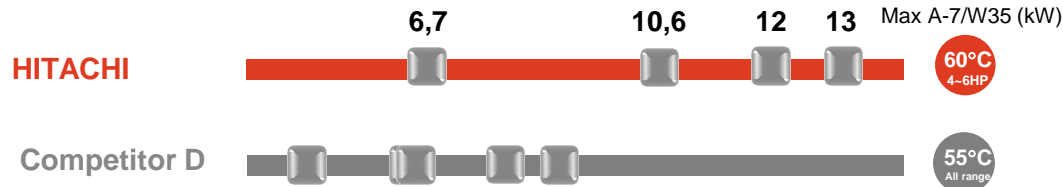
- On all Yutaki this function is a standard. For competitor D units an additional PCB is required (194€)



MONOBLOC AIR-TO-WATER HEAT PUMP

HITACHI vs COMPETITOR D

RANGE MAPPING



- Yutaki monobloc units have been totally redesigned and the 4 models of HITACHI range can cover a wide range of applications.
- Competitor D has 5 units but range is concentrated on small capacities only which limit the number of applications.

DESIGN

HITACHI



New controller (PC-ARFHE) including numerous exclusivities!



COMPETITOR D



TECHNICAL SPECIFICATIONS

Manufacturer		Competitor D		HITACHI		Competitor D		HITACHI		Competitor D		
Outdoor unit reference		EDLQ05CAV3		RASM-3VNE		EBLQ07CAV3		RASM-4(V)NE		EDLQ011BB6V3		
1	ERP DATA	Nominal energy efficiency 35°C (η _s)	%	172	164 ●	163	187 ●	129	175 ●	130	153 ●	123
		Nominal energy efficiency 55°C (η _s)	%	125	125	126	136 ●	105	133 ●	105	125 ●	101
		Energy Class 35°C (Average climate)		A++	A++	A++	A+++ ●	A+	A+++ ●	A+	A++ ●	A+
		Energy Class 55°C (Average climate)		A++	A++	A++	A++ ●	A+	A++ ●	A+	A++ ●	A+
		Sound power OU	dB(A)	61	64	62	64	64	65	65	67	66
2	HEATING	Nominal heating capacity A7/W35	kW	4,4	7,5 ●	7,0	11,0	11,2	14,0	14,0	16,0	16,0
		COP A7/W35	-	5,0	4,55 ●	4,52	5,0	4,38	4,71 ●	4,25	4,6 ●	4,12
		Max heating capacity A7/W35	kW	5,0	11,0 ●	7,0	15,2 ●	11,2	16,7 ●	14,0	17,8 ●	16,0
		Nominal heating capacity A-7/W35	kW	4,37	6,0	6,4	9,7 ●	6,49	11,5 ●	8,23	12,0 ●	9,15
		COP A-7/W35	-	2,71	2,57 ●	2,34	2,74 ●	2,5	2,65 ●	2,52	2,57 ●	2,4
		Max heating capacity A-7/W35	kW	4,6	6,7	6,4	10,6 ●	6,49	12,0 ●	8,23	13,0 ●	9,15
		Outlet water temp (Heating)	°C	15-55	20-55 ●	15-55	20-60 ●	15-55	20-60 ●	15-55	20-60 ●	15-55
3	COOLING	Nominal cooling capacity A35/W18	kW	3,9	6,0 ●	5,2	10,4	12,85	12,9	15,99	13,5	16,73
		EER A35/W18	-	4,07	3,81 ●	3,8	4,5 ●	3,32	4,02 ●	2,78	3,81 ●	2,63
		Nominal cooling capacity A35/W7	kW	4,2	6,0 ●	5,4	7,2	10,0	9,5	12,5	10,5	13,1
		EER A35/W7	-	2,32	2,75 ●	2,29	3,3 ●	2,71	3,54 ●	2,32	3,31 ●	2,21
4	OTHERS	Refrigerant	-	R410a	R410a	R410a	R410a	R410a	R410a	R410a	R410a	R410a
		Ambiant working range (Heating)	°C	-25~25	-25~25	-25~25	-25~25	-20~35	-25~25	-20~35	-25~25	-20~35
5	PHYS DATA	OU dimensions (HxWxD)	mm	735 x 1085 x 350	800 x 1252 x 370	735 x 1085 x 350	1380 x 1252 x 370 ●	1418 x 1435 x 382	1380 x 1252 x 370 ●	1418 x 1435 x 381	1380 x 1252 x 370 ●	1418 x 1435 x 382
		OU weight	kg	76	105	80	125	180	130	180	134	180