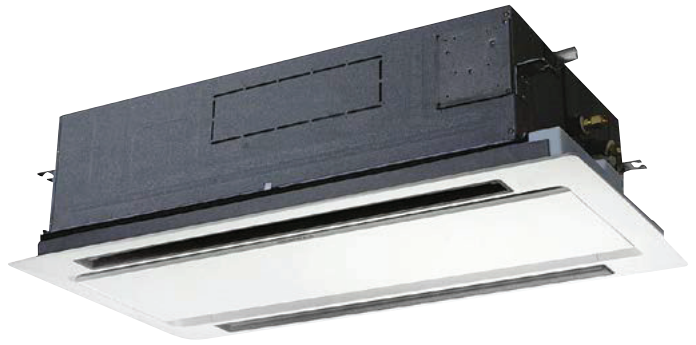


L1 TYPE 2 WAY CASSETTE



Slim, compact and lightweight units. Remarkable size and weight reductions have been achieved by improvement of the design around the fan, the weight of all models now being 30 kg.

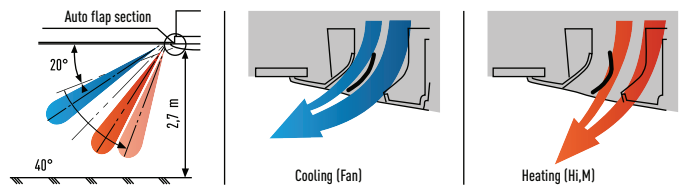
Technical focus

- Airflow and distribution is automatically altered depending on the operational mode of the unit
- Drain up is possible up to 500 mm from the drain port
- Simple maintenance

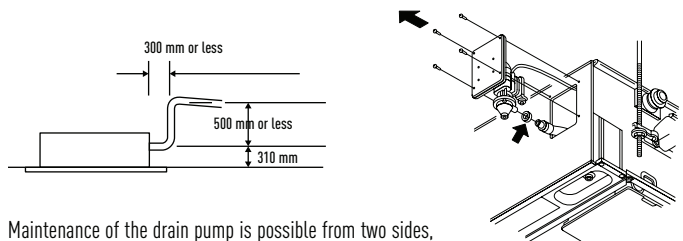
Simple maintenance

The drain pan is equipped with site wiring and can be removed. The fan case has a split construction, and the fan motor can be removed easily when the lower case is removed.

Airflow and distribution is automatically altered depending on the operational mode of the unit.



Drain up is possible up to 500 mm from the drain port.



Maintenance of the drain pump is possible from two sides, from the left side (piping side) and from the inside of the unit.



Optional Controller.
Control for hotel application
PAW-RE2C3



Optional Controller.
Wired remote controller
CZ-RTC5
Compatible with Econavi



Optional Controller.
Timer remote controller
CZ-RTC4
Compatible with Econavi



Optional Econavi Sensor.
CZ-CENSC1



Optional Controller.
Wireless remote controller
CZ-RWSL2N



Optional Controller.
Simplified remote controller
CZ-RE2C2



Panel
CZ-02KPL2
CZ-03KPL2 (for S-73ML1E5)

Model		S-22ML1E5	S-28ML1E5	S-36ML1E5	S-45ML1E5	S-56ML1E5	S-73ML1E5	
Power source		230 V / Single Phase / 50 Hz						
Cooling capacity	kW	2,2	2,8	3,6	4,5	5,6	7,3	
Power input cooling	W	90	92	93	97	97	145	
Operating current cooling	A	0,45	0,45	0,45	0,45	0,45	0,65	
Heating capacity	kW	2,5	3,2	4,2	5,0	6,3	8,0	
Power input heating	W	58	60	61	65	65	109	
Operating current heating	A	0,29	0,29	0,29	0,29	0,29	0,48	
Fan type		Sirocco fan						
Air volume	Hi / Med / Lo	m ³ /h	480 / 420 / 360	540 / 480 / 420	580 / 520 / 460	660 / 540 / 480	660 / 540 / 480	1,140 / 960 / 840
Sound pressure level	Hi / Med / Lo	dB(A)	30 / 27 / 24	33 / 29 / 26	34 / 31 / 28	35 / 33 / 29	35 / 33 / 29	38 / 35 / 33
Dimensions	H x W x D	mm	350(+8)x1.140(1.360)x600(680)					
Net weight		kg	28,5 (23 + 5,5)					39 (30 + 9)
Pipe connections	Liquid	inch	1/4					3/8
	Gas	inch	1/2					5/8
Drain piping		VP-25						

Rating Conditions: Cooling Indoor 27°C DB / 19°C WB. Cooling Outdoor 35°C DB / 24°C WB. Heating Indoor 20°C DB. Heating Outdoor 7°C DB / 6°C WB.
DB: Dry Bulb; WB: Wet Bulb.



ECONAVI and INTERNET CONTROL: Optional.