

# Hitachi Air Conditioning

Engineered for tomorrow.

SYSTEM  
**FREE**

## 2 way cassette RCD FSN2

This low profile range of cassettes allows for easy installation in the most confined spaces inside a ceiling.

These cost-effective units are suitable for applications with very high ceilings – ideal for retail outlets, shopping centres and gymnasiums.



### Features and Benefits

**SYSTEM FREE** Cooling & Heating capacities from 2.5kW to 14kW

**SYSTEM FREE** Extremely quiet thanks to innovative new front panel and small vertical profile

**SYSTEM FREE** Super High Stream turbo fan with curved blades for 20% increased efficiency with noise levels as low as 30dB(A)

**SYSTEM FREE** Compact vertical profile for installation in restricted spaces

### Optional Control Systems

#### **SYSTEM FREE** PC-ART

Standard wired remote controller (inc. 7-day time clock)



PC-ART

#### **SYSTEM FREE** CS Net Web

Web based controller



CS Net Web

#### **SYSTEM FREE** PC-ARF

Advanced wired LED controller (inc. 7-day time clock)



PC-ARF

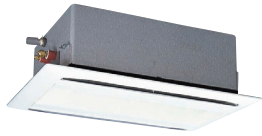
#### **SYSTEM FREE** Touch screen

For CS Net Web



TS002  
touchscreen




All Hitachi System Free indoor units are compatible with Hitachi's full range of commercial outdoor units.




RCD-FSN2

**SYSTEM  
FREE**

## 2-Way Cassette

Indoor Unit		RCD 1.0FSN2 	RCD 1.5FSN2 	RCD 2.0FSN2 
Nominal Cooling Capacity (Utopia System) <sup>(1)</sup>	kW	2.5	3.6	5.0
Nominal Heating Capacity (Utopia System) <sup>(2)</sup>	kW	2.8	4.0	5.6
UK Cooling Capacity Total/Sensible (Utopia)	kW	2.6 / 2.1	3.7 / 2.7	5.3 / 4.0
Nominal Cooling Capacity (Set Free System) <sup>(1)</sup>	kW	2.8	4.0	5.6
Nominal Heating Capacity (Set Free System) <sup>(2)</sup>	kW	3.2	4.8	6.3
UK Cooling Capacity Total/Sensible (Set Free)	kW	2.6 / 2.1	3.9 / 2.8	5.2 / 3.9
Noise Level (sound pressure) (L / M / H) <sup>(3)</sup>	dB(A)	30/32/34	30/32/35	30/32/35
Noise level (sound power)	dB(A)	55	56	56
Air flow cooling mode (L / M / H)	m <sup>3</sup> /h	480/540/600	540/660/780	660/780/900
Dimensions (H x W x D)	mm	298x860x620	298x860x620	298x860x620
Weight	Kg	27	27	27
Included Condensate Pump		yes	yes	yes
Condensate Pump Lift	mm	600 mm from the bottom edge of the unit		
Drain Diameter (ext)		φ32mm	φ32mm	φ32mm
Piping Diameter (Liquid / Gas)	Inch	1/4 / 1/2	1/4 / 1/2	1/4 / 5/8
	mm	6.35 / 12.70	6.35 / 12.70	6.35 / 15.88
Power Input	W	50	70	70
Power supply		230V / 1Ph / 50Hz	230V / 1Ph / 50Hz	230V / 1Ph / 50Hz
Recommended fuse size	A	5	5	5

Indoor Unit		RCD 2.5FSN2 	RCD 3.0FSN2	RCD 4.0FSN2	RCD 5.0FSN2
Nominal Cooling Capacity (Utopia System) <sup>(1)</sup>	kW	5.6	7.1	10.0	12.5
Nominal Heating Capacity (Utopia System) <sup>(2)</sup>	kW	6.3	8.0	11.2	14.0
UK Cooling Capacity Total/Sensible (Utopia)	kW	5.9 / 4.4	7.7 / 5.7	10.6 / 7.7	13.2 / 9.1
Nominal Cooling Capacity (Set Free System) <sup>(1)</sup>	kW	7.1	8.0	11.2	14.0
Nominal Heating Capacity (Set Free System) <sup>(2)</sup>	kW	8.5	9.0	12.5	16.0
UK Cooling Capacity Total/Sensible (Set Free)	kW	6.4 / 4.7	7.5 / 5.6	10.5 / 7.7	12.7 / 8.8
Noise Level (sound pressure) (L / M / H) <sup>(3)</sup>	dB(A)	31/34/38	31/34/38	33/36/40	36/40/43
Noise level (sound power)	dB(A)	59	59	60	62
Air flow cooling mode (L / M / H)	m <sup>3</sup> /h	840/960/1140	840/960/1140	1260/1440/1740	1500/1740/2040
Dimensions (H x W x D)	mm	298x860x620	298x860x620	298x1420x620	298x1420x620
Weight	Kg	30	30	48	48
Included Condensate Pump		yes	yes	yes	yes
Condensate Pump Lift	mm	600 mm from the bottom edge of the unit			
Drain Diameter (ext)		φ32mm	φ32mm	φ32mm	φ32mm
Piping Diameter (Liquid / Gas)	Inch	3/8 / 5/8	3/8 / 5/8	3/8 / 5/8	3/8 / 5/8
	mm	9.53 / 15.88	9.53 / 15.88	9.53 / 15.88	9.53 / 15.88
Power Input	W	90	90	120	180
Power supply		230V / 1Ph / 50Hz	230V / 1Ph / 50Hz	230V / 1Ph / 50Hz	230V / 1Ph / 50Hz
Recommended fuse size	A	5	5	5	5

Standard Grille panel		P-N23DNA (1.0 ~ 3.0)	P-N46DNA (4.0 ~ 5.0)
Panel dimensions (H x W x D)	mm	40x1100x710	40x1660x710
Panel weight	Kg	6.0	8.0

<sup>(1)</sup> Cooling: Internal ambient 27°C (19°C WB) - Ambient 35°C; Refrigerant piping length 7.5m, level difference 0m.

<sup>(2)</sup> Heating: Internal ambient 20°C - Ambient 7°C (6°C WB); Refrigerant piping length 7.5m, level difference 0m.

<sup>(3)</sup> Sound pressure level measured at 1.5 meters below the unit (measured in anechoic room)

 Unit Capacity Dipswitch available

\* RCD 1.0 ~ 4.0FSN2 are not compatible with IVX Premium and Comfort outdoor units