

# Technical Bulletin

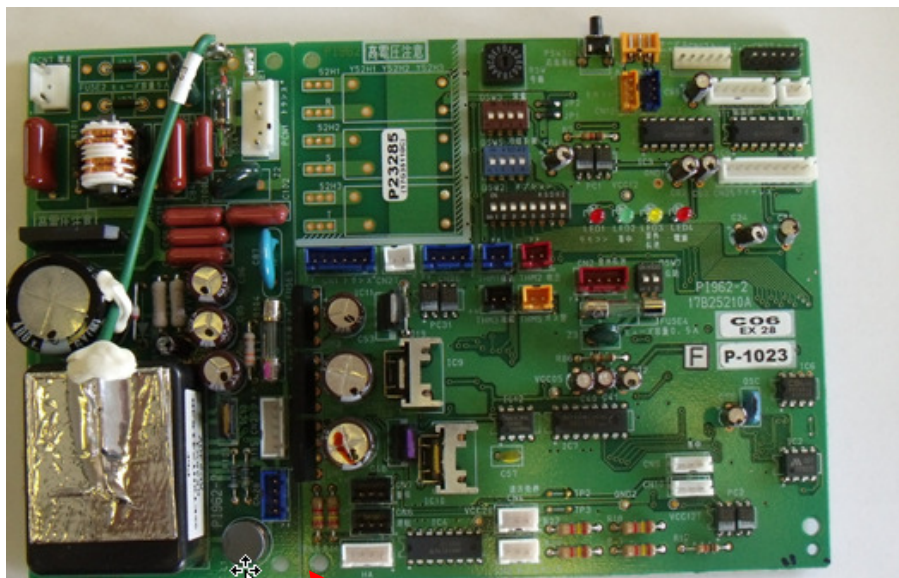
Number	077
Subject	P23285 PCB for RPK FSGM
Date	08 August 2012

## **P23285**

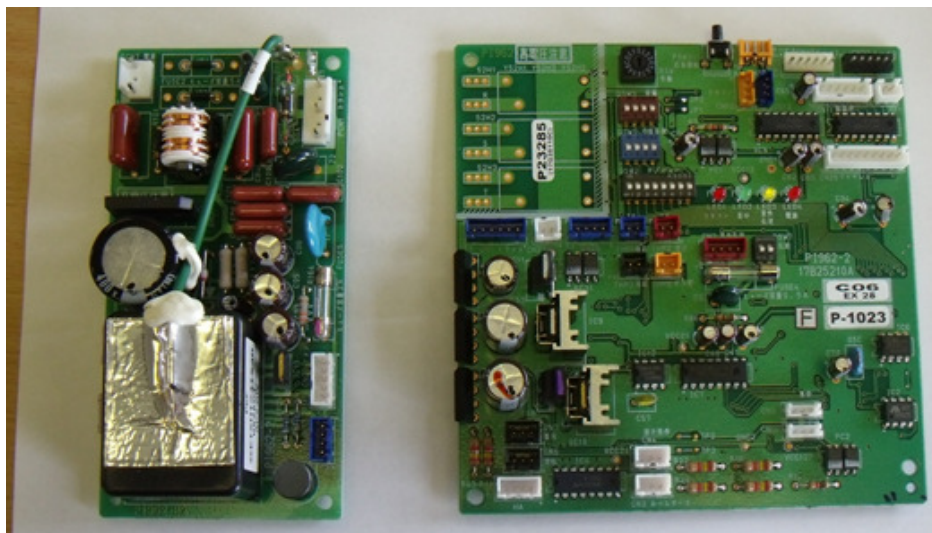
The PCBs for the Hitachi RPK FSGM range of wall mounted units is supplied in 1 piece assembly under the part no. P23285. This contains both the Power PCB & Control PCB.

The question most asked by the customer is “are you sure this is the correct PCB”, not realising it is 2 PCBs in one assembly.

When fitting this PCB the PCBs have to be **physically split along the indicated score line**.



Score Line



Split PCB