



# PLFY-P100VBM-E

Indoor Unit

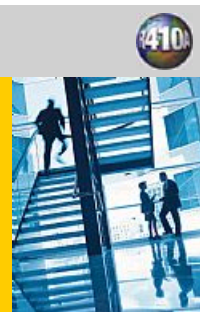
2, 3 & 4 Way Blow Ceiling Cassette

Power cassettes offer 72 different airflow patterns, with the ability to handle a multitude of ceiling applications up to 4.2 meters in height. The easy to install unit is ideal for maintaining constant temperatures, thanks to adjustable vanes that allow users to precisely direct air where it's needed.

- **Handy corner pocket design simplifies maintenance**
- **Airflow controllable for ceiling heights up to 4.2m, with automatic adjustment of fan speed**
- **Reduced draft air distribution, with independent vane control**
- **Drain pump as standard, 850mm from drain pan**
- **Filter lowering operation down to 4m (optional PLP-6BAJ grille required)**
- **Optional 'I See Sensor' for energy saving and smooth temperature control throughout the room**



Pictures not to scale



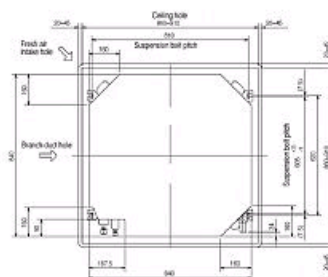
## Product Details

PLFY-P100VBM-E	
Capacity (kW):	
Heating (Nominal)	12.5
Cooling (Nominal)	11.2
Heating (UK)	11.6
Cooling (UK)	10.0
R410A High Sensible Cooling (UK)	8.1
SHF R410A (UK)	0.73
SHF High Sensible R410A (UK)	0.79
Power Input (kW) Heating (Nominal)	0.14
Power Input (kW) Cooling (Nominal)	0.15
Airflow(m3/min) - Lo-Mi1-Mi2-Hi	21-24-27-29
Noise (dBA) - Lo-Mi1-Mi2-Hi	34-37-39-41
Width (grille) - mm	840 (950)
Depth (grille) - mm	840 (950)
Height (grille) - mm	298 (35)
Weight (grille) - kg	27 (6)
Electrical Supply	220-240v, 50Hz
Phase	Single
Mains Cable No. Cores	3
Running Current (A) - Heating	0.94
Running Current (A) - Cooling	1
Fuse Rating (BS88) - HRC (A)	6
Grille Ref	PLP-6BA GRILLE

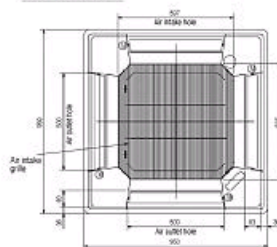
## Dimensions

PLFY-P100VBM-E

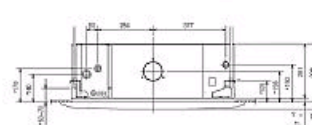
Upper View >



Front View >



Side View >



Telephone: 01707 282880

Email: [air.conditioning@meuk.mee.com](mailto:air.conditioning@meuk.mee.com) Website: <http://www.mitsubishielectric.co.uk/aircon>

Mitsubishi Electric reserves the right to make any variation in technical specification to the equipment described, or to withdraw or replace products without prior notification or public announcement.

Tel:  
Fax:





# PLFY-P125VBM-E

Indoor Unit

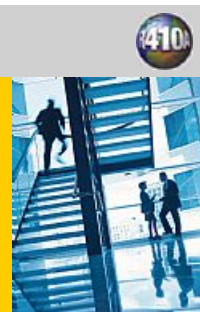
2, 3 & 4 Way Blow Ceiling Cassette

Power cassettes offer 72 different airflow patterns, with the ability to handle a multitude of ceiling applications up to 4.2 meters in height. The easy to install unit is ideal for maintaining constant temperatures, thanks to adjustable vanes that allow users to precisely direct air where it's needed.

- **Handy corner pocket design simplifies maintenance**
- **Airflow controllable for ceiling heights up to 4.2m, with automatic adjustment of fan speed**
- **Reduced draft air distribution, with independent vane control**
- **Drain pump as standard, 850mm from drain pan**
- **Filter lowering operation down to 4m (optional PLP-6BAJ grille required)**
- **Optional 'I See Sensor' for energy saving and smooth temperature control throughout the room**



Pictures not to scale



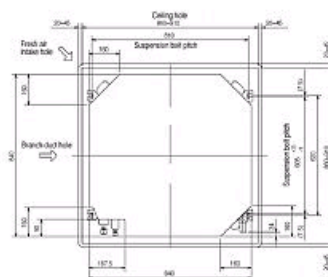
## Product Details

PLFY-P125VBM-E	
Capacity (kW):	
Heating (Nominal)	16.0
Cooling (Nominal)	14.0
Heating (UK)	14.8
Cooling (UK)	12.5
R410A High Sensible Cooling (UK)	10.2
SHF R410A (UK)	0.71
SHF High Sensible R410A (UK)	0.74
Power Input (kW) Heating (Nominal)	0.15
Power Input (kW) Cooling (Nominal)	0.16
Airflow(m3/min) - Lo-Mi1-Mi2-Hi	22-25-28-30
Noise (dBA) - Lo-Mi1-Mi2-Hi	35-38-41-43
Width (grille) - mm	840 (950)
Depth (grille) - mm	840 (950)
Height (grille) - mm	298 (35)
Weight (grille) - kg	27 (6)
Electrical Supply	220-240v, 50Hz
Phase	Single
Mains Cable No. Cores	3
Running Current (A) - Heating	1
Running Current (A) - Cooling	1.07
Fuse Rating (BS88) - HRC (A)	6
Grille Ref	PLP-6BA GRILLE

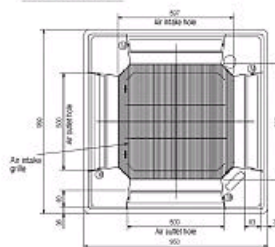
## Dimensions

PLFY-P125VBM-E

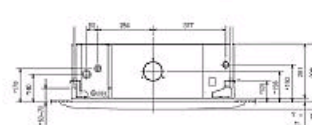
### Upper View >



### Front View >



### Side View >



**Telephone: 01707 282880**

Email: [air.conditioning@meuk.mee.com](mailto:air.conditioning@meuk.mee.com) Website: <http://www.mitsubishielectric.co.uk/aircon>

Mitsubishi Electric reserves the right to make any variation in technical specification to the equipment described, or to withdraw or replace products without prior notification or public announcement.

**Tel:**  
**Fax:**





# PLFY-P32VBM-E

Indoor Unit

2, 3 & 4 Way Blow Ceiling Cassette

Power cassettes offer 72 different airflow patterns, with the ability to handle a multitude of ceiling applications up to 4.2 meters in height. The easy to install unit is ideal for maintaining constant temperatures, thanks to adjustable vanes that allow users to precisely direct air where it's needed.

- **Handy corner pocket design simplifies maintenance**
- **Airflow controllable for ceiling heights up to 4.2m, with automatic adjustment of fan speed**
- **Reduced draft air distribution, with independent vane control**
- **Drain pump as standard, 850mm from drain pan**
- **Filter lowering operation down to 4m (optional PLP-6BAJ grille required)**
- **Optional 'I See Sensor' for energy saving and smooth temperature control throughout the room**



Pictures not to scale



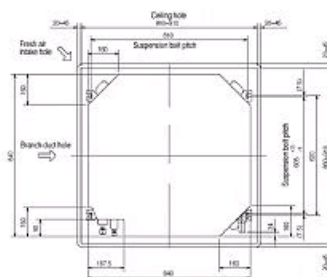
## Product Details

PLFY-P32VBM-E	
Capacity (kW):	
Heating (Nominal)	4.0
Cooling (Nominal)	3.6
Heating (UK)	3.7
Cooling (UK)	3.2
R410A High Sensible Cooling (UK)	2.6
SHF R410A (UK)	0.84
SHF High Sensible R410A (UK)	0.96
Power Input (kW) Heating (Nominal)	0.02
Power Input (kW) Cooling (Nominal)	0.03
Airflow(m3/min) - Lo-Mi1-Mi2-Hi	11-12-13-14
Noise (dBA) - Lo-Mi1-Mi2-Hi	27-28-29-31
Width (grille) - mm	840 (950)
Depth (grille) - mm	840 (950)
Height (grille) - mm	258 (35)
Weight (grille) - kg	22 (6)
Electrical Supply	220-240v, 50Hz
Phase	Single
Mains Cable No. Cores	3
Running Current (A) - Heating	0.14
Running Current (A) - Cooling	0.22
Fuse Rating (BS88) - HRC (A)	6
Grille Ref	PLP-6BA GRILLE

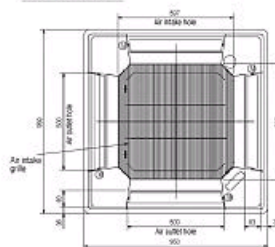
## Dimensions

PLFY-P32VBM-E

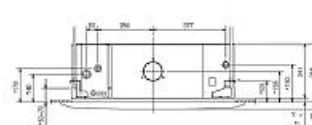
Upper View >



Front View >



Side View >



**Telephone: 01707 282880**

Email: [air.conditioning@meuk.mee.com](mailto:air.conditioning@meuk.mee.com) Website: <http://www.mitsubishielectric.co.uk/aircon>

Mitsubishi Electric reserves the right to make any variation in technical specification to the equipment described, or to withdraw or replace products without prior notification or public announcement.

**Tel:**  
**Fax:**





# PLFY-P40VBM-E

Indoor Unit

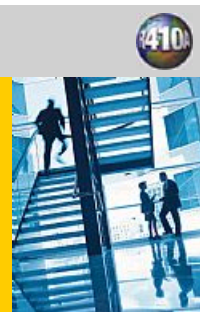
2, 3 & 4 Way Blow Ceiling Cassette

Power cassettes offer 72 different airflow patterns, with the ability to handle a multitude of ceiling applications up to 4.2 meters in height. The easy to install unit is ideal for maintaining constant temperatures, thanks to adjustable vanes that allow users to precisely direct air where it's needed.

- **Handy corner pocket design simplifies maintenance**
- **Airflow controllable for ceiling heights up to 4.2m, with automatic adjustment of fan speed**
- **Reduced draft air distribution, with independent vane control**
- **Drain pump as standard, 850mm from drain pan**
- **Filter lowering operation down to 4m (optional PLP-6BAJ grille required)**
- **Optional 'I See Sensor' for energy saving and smooth temperature control throughout the room**



Pictures not to scale





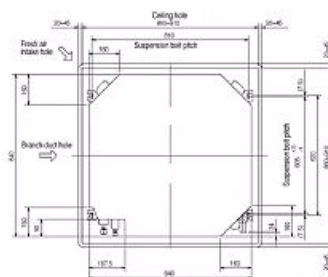
## Product Details

PLFY-P40VBM-E	
Capacity (kW):	
Heating (Nominal)	5.0
Cooling (Nominal)	4.5
Heating (UK)	4.6
Cooling (UK)	4.0
R410A High Sensible Cooling (UK)	3.3
SHF R410A (UK)	0.83
SHF High Sensible R410A (UK)	0.91
Power Input (kW) Heating (Nominal)	0.03
Power Input (kW) Cooling (Nominal)	0.04
Airflow(m3/min) - Lo-Mi1-Mi2-Hi	12-13-14-16
Noise (dBA) - Lo-Mi1-Mi2-Hi	27-28-30-31
Width (grille) - mm	840 (950)
Depth (grille) - mm	840 (950)
Height (grille) - mm	258 (35)
Weight (grille) - kg	22 (6)
Electrical Supply	220-240v, 50Hz
Phase	Single
Mains Cable No. Cores	3
Running Current (A) - Heating	0.22
Running Current (A) - Cooling	0.29
Fuse Rating (BS88) - HRC (A)	6
Grille Ref	PLP-6BA GRILLE

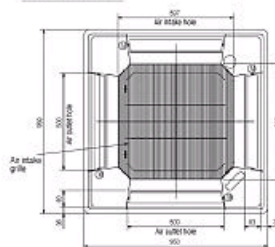
## Dimensions

PLFY-P40VBM-E

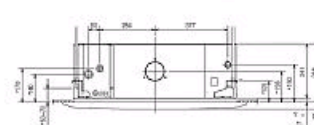
### Upper View >



### Front View >



### Side View >



**Telephone: 01707 282880**

Email: [air.conditioning@meuk.mee.com](mailto:air.conditioning@meuk.mee.com) Website: <http://www.mitsubishielectric.co.uk/aircon>

Mitsubishi Electric reserves the right to make any variation in technical specification to the equipment described, or to withdraw or replace products without prior notification or public announcement.

**Tel:**  
**Fax:**







# PLFY-P50VBM-E

Indoor Unit

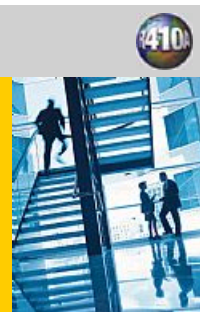
2, 3 & 4 Way Blow Ceiling Cassette

Power cassettes offer 72 different airflow patterns, with the ability to handle a multitude of ceiling applications up to 4.2 meters in height. The easy to install unit is ideal for maintaining constant temperatures, thanks to adjustable vanes that allow users to precisely direct air where it's needed.

- **Handy corner pocket design simplifies maintenance**
- **Airflow controllable for ceiling heights up to 4.2m, with automatic adjustment of fan speed**
- **Reduced draft air distribution, with independent vane control**
- **Drain pump as standard, 850mm from drain pan**
- **Filter lowering operation down to 4m (optional PLP-6BAJ grille required)**
- **Optional 'I See Sensor' for energy saving and smooth temperature control throughout the room**



Pictures not to scale



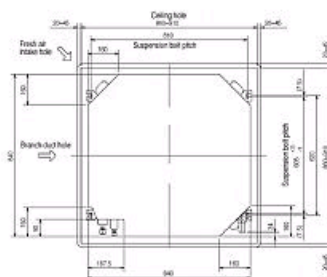
## Product Details

PLFY-P50VBM-E	
Capacity (kW):	
Heating (Nominal)	6.3
Cooling (Nominal)	5.6
Heating (UK)	5.8
Cooling (UK)	5.0
R410A High Sensible Cooling (UK)	4.1
SHF R410A (UK)	0.76
SHF High Sensible R410A (UK)	0.83
Power Input (kW) Heating (Nominal)	0.03
Power Input (kW) Cooling (Nominal)	0.04
Airflow(m3/min) - Lo-Mi1-Mi2-Hi	12-13-14-16
Noise (dBA) - Lo-Mi1-Mi2-Hi	27-28-30-31
Width (grille) - mm	840 (950)
Depth (grille) - mm	840 (950)
Height (grille) - mm	258 (35)
Weight (grille) - kg	22 (6)
Electrical Supply	220-240v, 50Hz
Phase	Single
Mains Cable No. Cores	3
Running Current (A) - Heating	0.22
Running Current (A) - Cooling	0.29
Fuse Rating (BS88) - HRC (A)	6
Grille Ref	PLP-6BA GRILLE

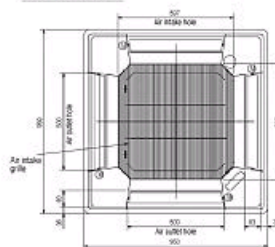
## Dimensions

PLFY-P50VBM-E

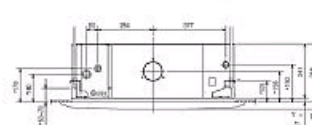
Upper View >



Front View >



Side View >



Telephone: 01707 282880

Email: [air.conditioning@meuk.mee.com](mailto:air.conditioning@meuk.mee.com) Website: <http://www.mitsubishielectric.co.uk/aircon>

Mitsubishi Electric reserves the right to make any variation in technical specification to the equipment described, or to withdraw or replace products without prior notification or public announcement.

Tel:  
Fax:





# PLFY-P63VBM-E

Indoor Unit

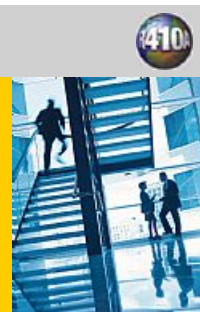
2, 3 & 4 Way Blow Ceiling Cassette

Power cassettes offer 72 different airflow patterns, with the ability to handle a multitude of ceiling applications up to 4.2 meters in height. The easy to install unit is ideal for maintaining constant temperatures, thanks to adjustable vanes that allow users to precisely direct air where it's needed.

- **Handy corner pocket design simplifies maintenance**
- **Airflow controllable for ceiling heights up to 4.2m, with automatic adjustment of fan speed**
- **Reduced draft air distribution, with independent vane control**
- **Drain pump as standard, 850mm from drain pan**
- **Filter lowering operation down to 4m (optional PLP-6BAJ grille required)**
- **Optional 'I See Sensor' for energy saving and smooth temperature control throughout the room**



Pictures not to scale



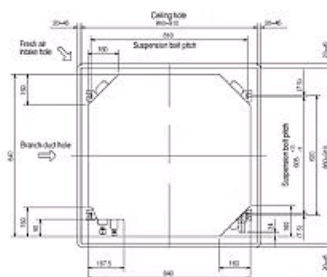
## Product Details

PLFY-P63VBM-E	
Capacity (kW):	
Heating (Nominal)	8.0
Cooling (Nominal)	7.1
Heating (UK)	7.4
Cooling (UK)	6.3
R410A High Sensible Cooling (UK)	5.2
SHF R410A (UK)	0.75
SHF High Sensible R410A (UK)	0.79
Power Input (kW) Heating (Nominal)	0.04
Power Input (kW) Cooling (Nominal)	0.05
Airflow(m3/min) - Lo-Mi1-Mi2-Hi	14-15-16-18
Noise (dBA) - Lo-Mi1-Mi2-Hi	28-29-30-32
Width (grille) - mm	840 (950)
Depth (grille) - mm	840 (950)
Height (grille) - mm	258 (35)
Weight (grille) - kg	23 (6)
Electrical Supply	220-240v, 50Hz
Phase	Single
Mains Cable No. Cores	3
Running Current (A) - Heating	0.29
Running Current (A) - Cooling	0.36
Fuse Rating (BS88) - HRC (A)	6
Grille Ref	PLP-6BA GRILLE

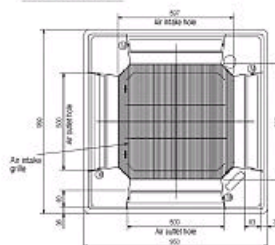
## Dimensions

PLFY-P63VBM-E

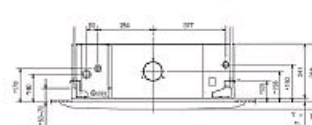
### Upper View >



### Front View >



### Side View >



**Telephone: 01707 282880**

Email: [air.conditioning@meuk.mee.com](mailto:air.conditioning@meuk.mee.com) Website: <http://www.mitsubishielectric.co.uk/aircon>

Mitsubishi Electric reserves the right to make any variation in technical specification to the equipment described, or to withdraw or replace products without prior notification or public announcement.

**Tel:**  
**Fax:**





# PLFY-P80VBM-E

Indoor Unit

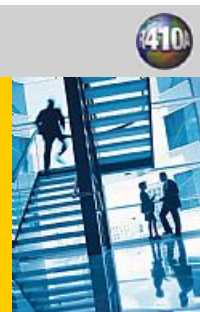
2, 3 & 4 Way Blow Ceiling Cassette

Power cassettes offer 72 different airflow patterns, with the ability to handle a multitude of ceiling applications up to 4.2 meters in height. The easy to install unit is ideal for maintaining constant temperatures, thanks to adjustable vanes that allow users to precisely direct air where it's needed.

- **Handy corner pocket design simplifies maintenance**
- **Airflow controllable for ceiling heights up to 4.2m, with automatic adjustment of fan speed**
- **Reduced draft air distribution, with independent vane control**
- **Drain pump as standard, 850mm from drain pan**
- **Filter lowering operation down to 4m (optional PLP-6BAJ grille required)**
- **Optional 'I See Sensor' for energy saving and smooth temperature control throughout the room**



Pictures not to scale



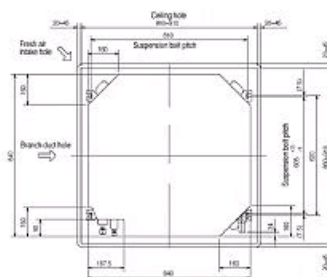
## Product Details

PLFY-P80VBM-E	
Capacity (kW):	
Heating (Nominal)	10.0
Cooling (Nominal)	9.0
Heating (UK)	9.2
Cooling (UK)	8.0
R410A High Sensible Cooling (UK)	6.5
SHF R410A (UK)	0.73
SHF High Sensible R410A (UK)	0.78
Power Input (kW) Heating (Nominal)	0.06
Power Input (kW) Cooling (Nominal)	0.07
Airflow(m3/min) - Lo-Mi1-Mi2-Hi	16-18-20-22
Noise (dBA) - Lo-Mi1-Mi2-Hi	30-32-35-37
Width (grille) - mm	840 (950)
Depth (grille) - mm	840 (950)
Height (grille) - mm	258 (35)
Weight (grille) - kg	23 (6)
Electrical Supply	220-240v, 50Hz
Phase	Single
Mains Cable No. Cores	3
Running Current (A) - Heating	0.43
Running Current (A) - Cooling	0.51
Fuse Rating (BS88) - HRC (A)	6
Grille Ref	PLP-6BA GRILLE

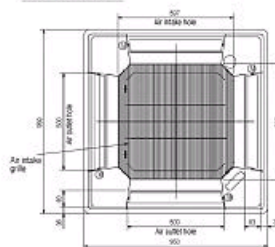
## Dimensions

PLFY-P80VBM-E

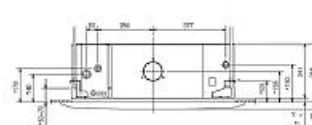
### Upper View >



### Front View >



### Side View >



**Telephone: 01707 282880**

Email: [air.conditioning@meuk.mee.com](mailto:air.conditioning@meuk.mee.com) Website: <http://www.mitsubishielectric.co.uk/aircon>

Mitsubishi Electric reserves the right to make any variation in technical specification to the equipment described, or to withdraw or replace products without prior notification or public announcement.

**Tel:**  
**Fax:**

