

PUHY-HP200, 250YHM-A(-BS)

Unit : mm

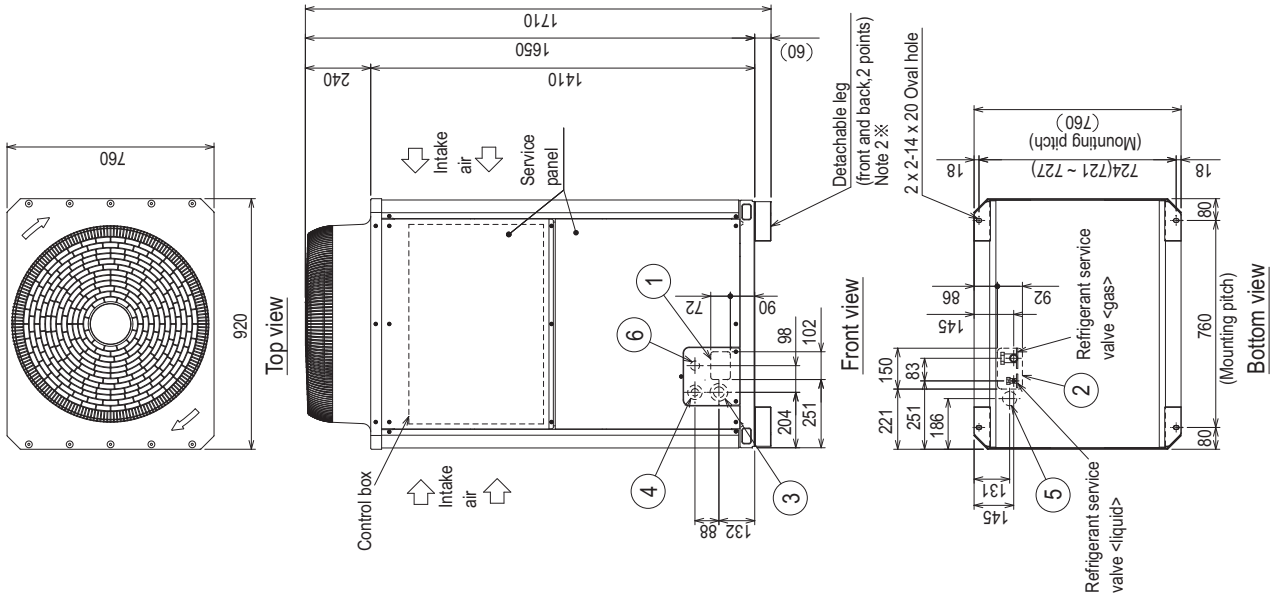
- <Accessories>
- Connecting pipe
  - <Gas>
    - Elbow (ID25.4XOD25.4)..... P200,P250 1pc.
    - Pipe (ID25.4XOD19.05)..... P200 1pc.
    - Pipe (ID25.4XOD22.2)..... P250 1pc.
  - <Liquid>
    - Pipe (ID9.52XOD9.52)..... P200,P250 1pc.
    - Pipe (ID9.52XOD12.7)..... P200,P250 1pc.

Note 1. Please refer to the next page for information regarding necessary spacing around the unit and foundation work.

2. The detachable leg can be removed at site.

3. At brazing of pipes, wrap the refrigerant service valve with wet cloth and keep the temperature of refrigerant service valve under 120°C.

NO.	Usage	Specifications
①	Front through hole	102X72 Knockout hole
②	Bottom through hole	150X92 Knockout hole
③	For pipes	Front through hole ø65 or ø40 Knockout hole
④	For wires	Front through hole ø52 or ø27 Knockout hole
⑤		Bottom through hole ø52 Knockout hole
⑥	For transmission cables	Front through hole ø34 Knockout hole

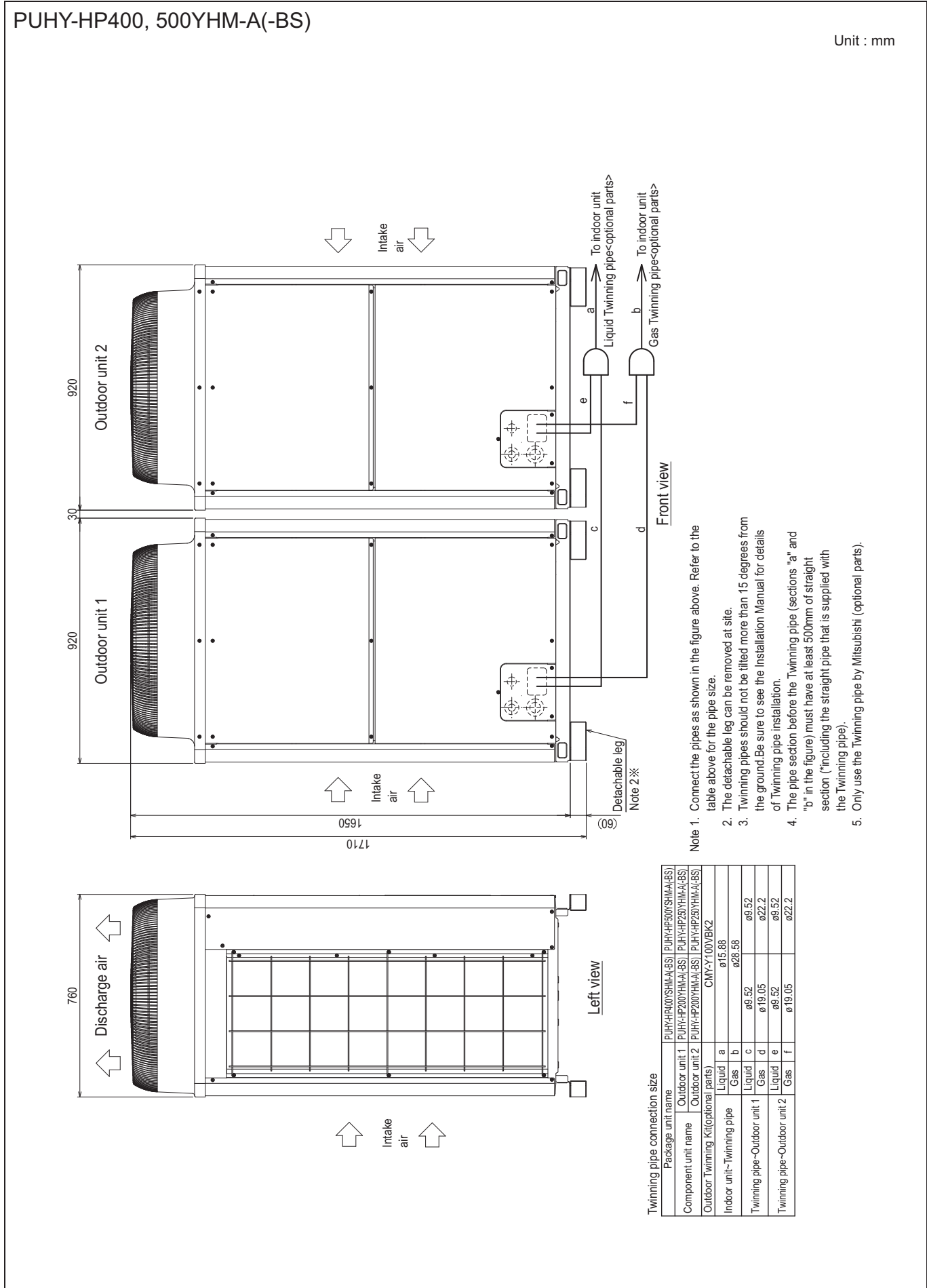


Connecting pipe specifications

Model	Position dimensions for the refrigerant service valve		Connection specifications for the refrigerant service valve *1	
	Liquid	Gas	Liquid	Gas
PUHY-HP200YHM	142	170	ø12.7 Braze (ø9.52 Braze) *2	ø19.05 Braze
PUHY-HP250YHM		172		ø22.2 Braze

\*1 Connect by using the connecting pipes (for bottom piping and front piping) that are supplied.

\*2 Indicates dimensions and connection specifications in the case the unit is used in combination with other outdoor units.



dH