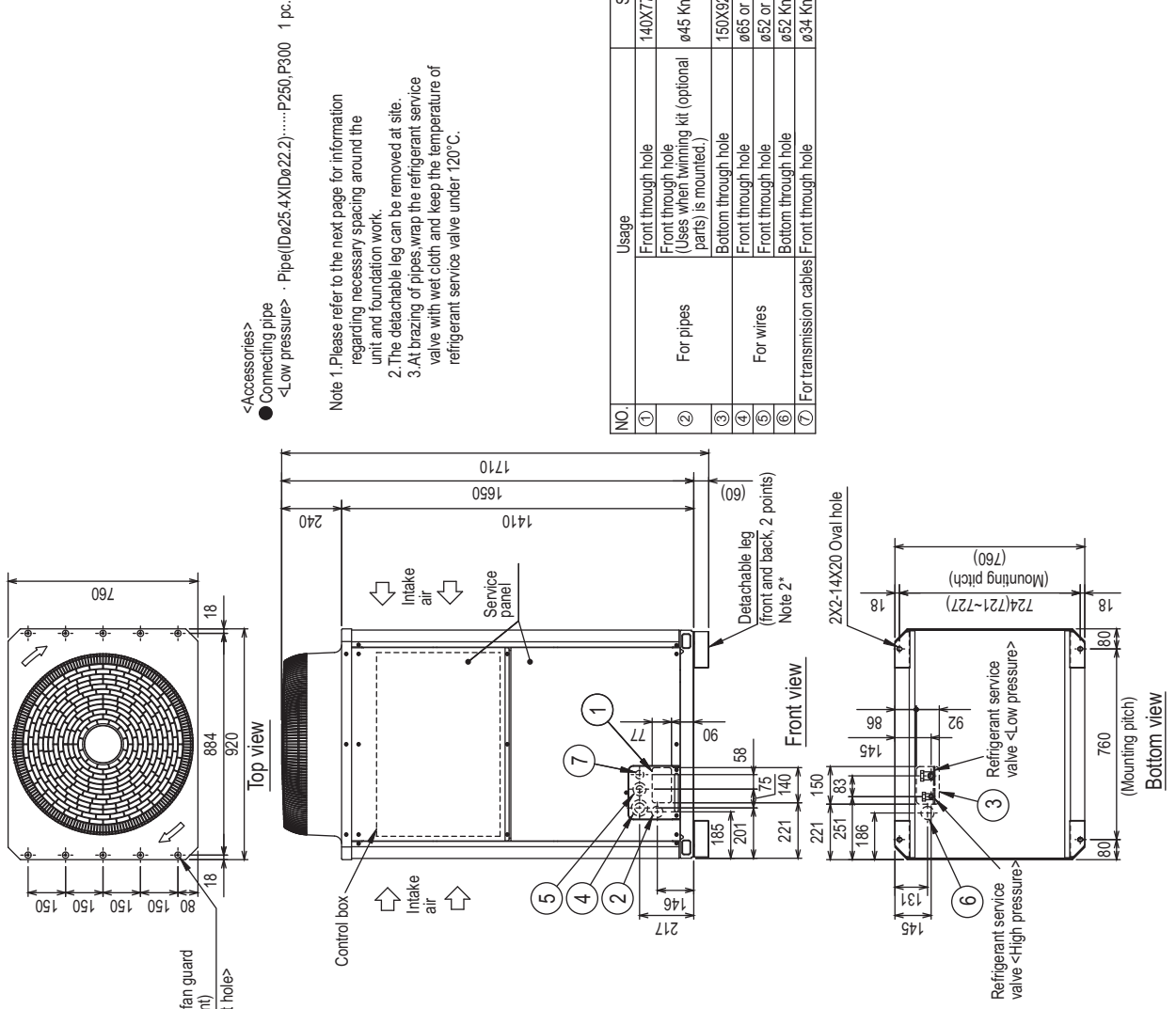


PURY-P200,250,300YJM-A(-BS)

Unit : mm



<Accessories>
 ● Connecting pipe
 ● <Low pressure> Pipe (Dø25.4XIDø22.2).....P250,P300 1 pc.

Note 1. Please refer to the next page for information regarding necessary spacing around the unit and foundation work.
 2. The detachable leg can be removed at site.
 3. At brazing of pipes, wrap the refrigerant service valve with wet cloth and keep the temperature of refrigerant service valve under 120°C.

NO.	Usage	Specifications
①	Front through hole	140X77 Knockout hole
②	Front through hole (Uses when twinning kit (optional parts) is mounted.)	ø45 Knockout hole
③	Bottom through hole	150X92 Knockout hole
④	Front through hole	ø65 or ø40 Knockout hole
⑤	Front through hole	ø62 or ø27 Knockout hole
⑥	Bottom through hole	ø52 Knockout hole
⑦	For transmission cables	Front through hole ø34 Knockout hole

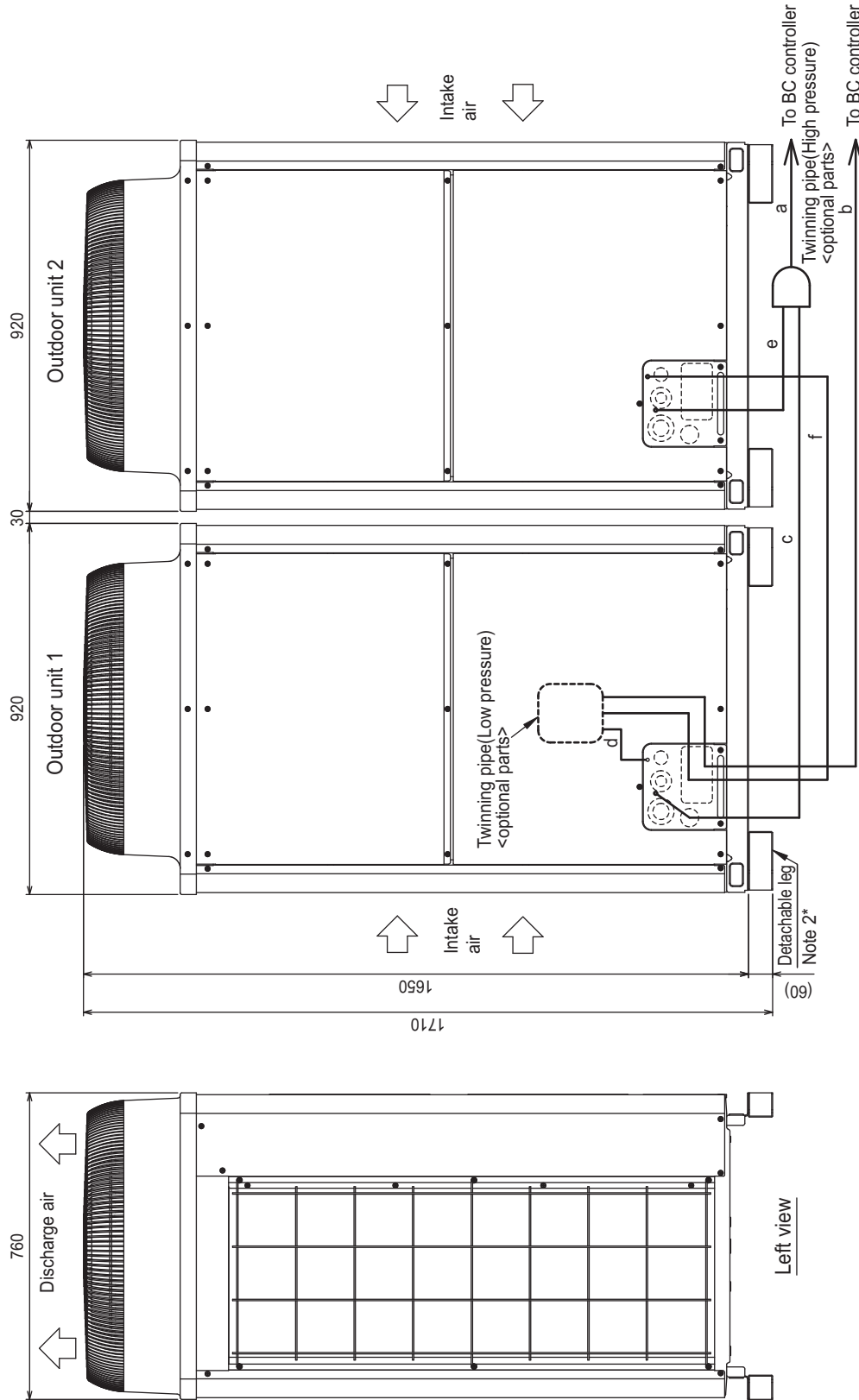
Model	Position dimensions for the refrigerant service valve		Connection specifications for the refrigerant service valve	
	High pressure A	Low pressure B	High pressure	Low pressure
PURY-P200YJM	239	261	ø15.88 Brazed*2	ø19.05 Brazed*2
PURY-P250YJM	261	263	ø19.05 Brazed*2	ø22.2 Brazed*1
PURY-P300YJM				

*1. Connect by using the connecting pipes (for bottom piping and front piping) that are supplied.
 *2. Expand the field pipes for bottom piping and front piping and connect directly to the valve.

R2

PURY-P400,450,500,550,600YSJM-A(1)(-BS)

Unit : mm



Twinning pipe connection size

Package unit name	PURY-P400YSJM-A(1)(-BS)	PURY-P450YSJM-A(1)(-BS)	PURY-P500YSJM-A(1)(-BS)	PURY-P550YSJM-A(1)(-BS)	PURY-P600YSJM-A(1)(-BS)
Outdoor unit 1	PURY-P400YSJM-A(1)(-BS)	PURY-P450YSJM-A(1)(-BS)	PURY-P500YSJM-A(1)(-BS)	PURY-P550YSJM-A(1)(-BS)	PURY-P600YSJM-A(1)(-BS)
Outdoor unit 2	PURY-P200YSJM-A(1)(-BS)	PURY-P250YSJM-A(1)(-BS)	PURY-P300YSJM-A(1)(-BS)	PURY-P350YSJM-A(1)(-BS)	PURY-P400YSJM-A(1)(-BS)
Component unit name	PURY-P200YSJM-A(1)(-BS)	PURY-P250YSJM-A(1)(-BS)	PURY-P300YSJM-A(1)(-BS)	PURY-P350YSJM-A(1)(-BS)	PURY-P400YSJM-A(1)(-BS)
Outdoor Twinning Kit(optional parts)	PURY-P200YSJM-A(1)(-BS)	PURY-P250YSJM-A(1)(-BS)	PURY-P300YSJM-A(1)(-BS)	PURY-P350YSJM-A(1)(-BS)	PURY-P400YSJM-A(1)(-BS)
BC controller--Twinning pipe	CMY-R100VBK				
High pressure	ø22.2				
Low pressure	ø28.58				

Unit model	High pressure	Low pressure
P200	c or e ø15.88	d or f ø19.05
P250	ø19.05	ø22.2
P300	ø19.05	ø22.2

Front view

Left view

Note 1. Connect the pipes as shown in the figure above. Refer to the table above for the pipe size.

2. The detachable leg can be removed at site.

3. Twinning pipe (High pressure) should not be filled more than 15 degrees from the horizontal plane.

Be sure to see the Installation Manual for the details of Twinning pipe installation.

4. Only use the Twinning pipe by Mitsubishi (optional parts).

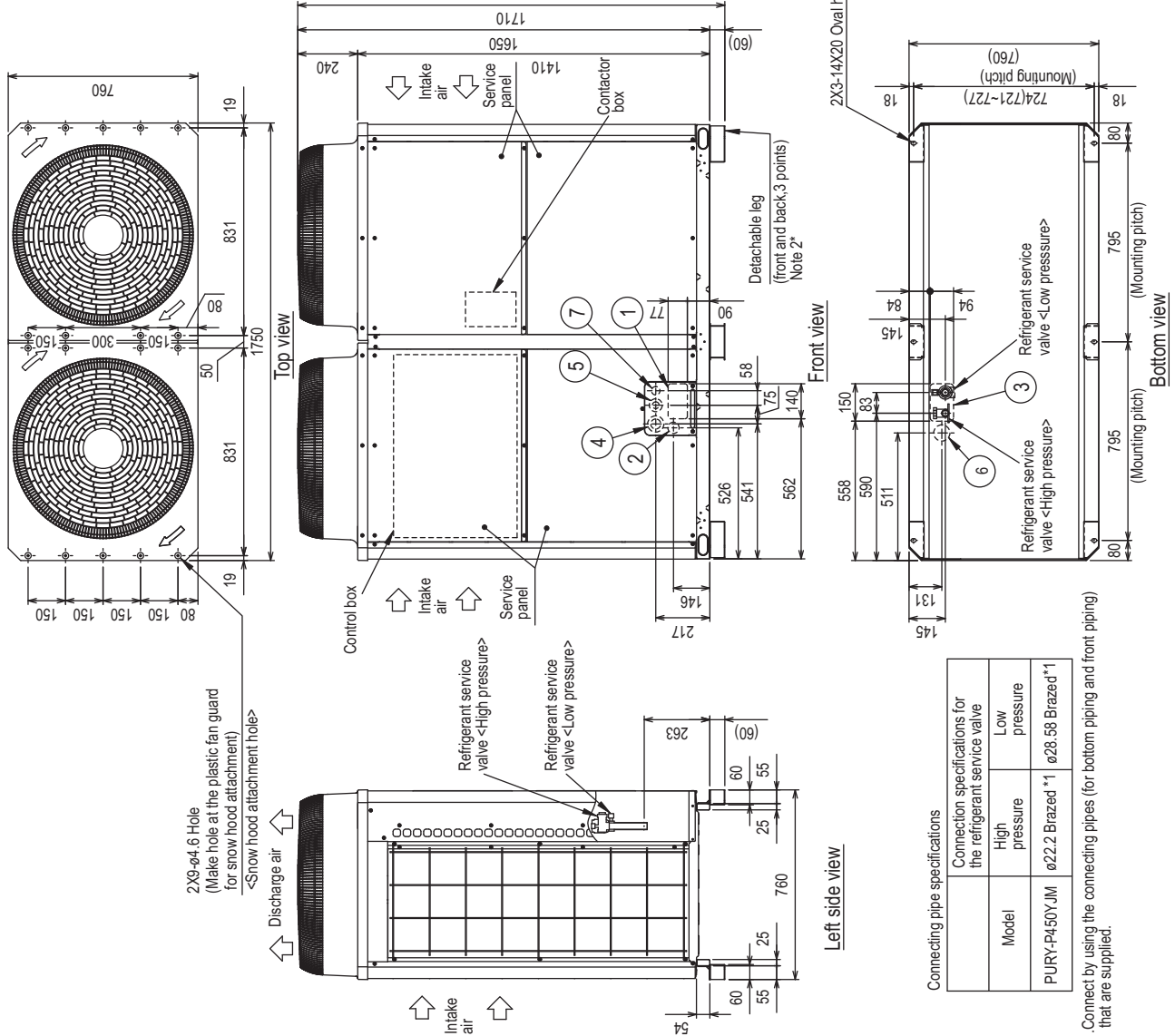
R2

PURY-P450YJM-A-(BS)

Unit : mm

- <Accessories>
- Connecting pipe
 - <Low pressure> · Pipe (IDø28.58XODø28.58) 1 pc.
 - <High pressure> · Pipe (IDø25.4XIDø22.2) 1 pc.
- Note 1. Please refer to the next page for information regarding necessary spacing around the unit and foundation work.
2. The detachable leg can be removed at site.
3. At brazing of pipes, wrap the refrigerant service valve with wet cloth and keep the temperature of refrigerant service valve under 120°C.

NO.	Usage	Specifications
①	Front through hole	140 X 77 Knockout hole
②	For pipes Front through hole (Uses when swimming kit (optional parts) is mounted.)	ø45 Knockout hole
③	Bottom through hole	150 X 94 Knockout hole
④	Front through hole	ø65 or ø40 Knockout hole
⑤	Front through hole	ø52 or ø27 Knockout hole
⑥	Bottom through hole	ø65 Knockout hole
⑦	For transmission cables Front through hole	ø34 Knockout hole

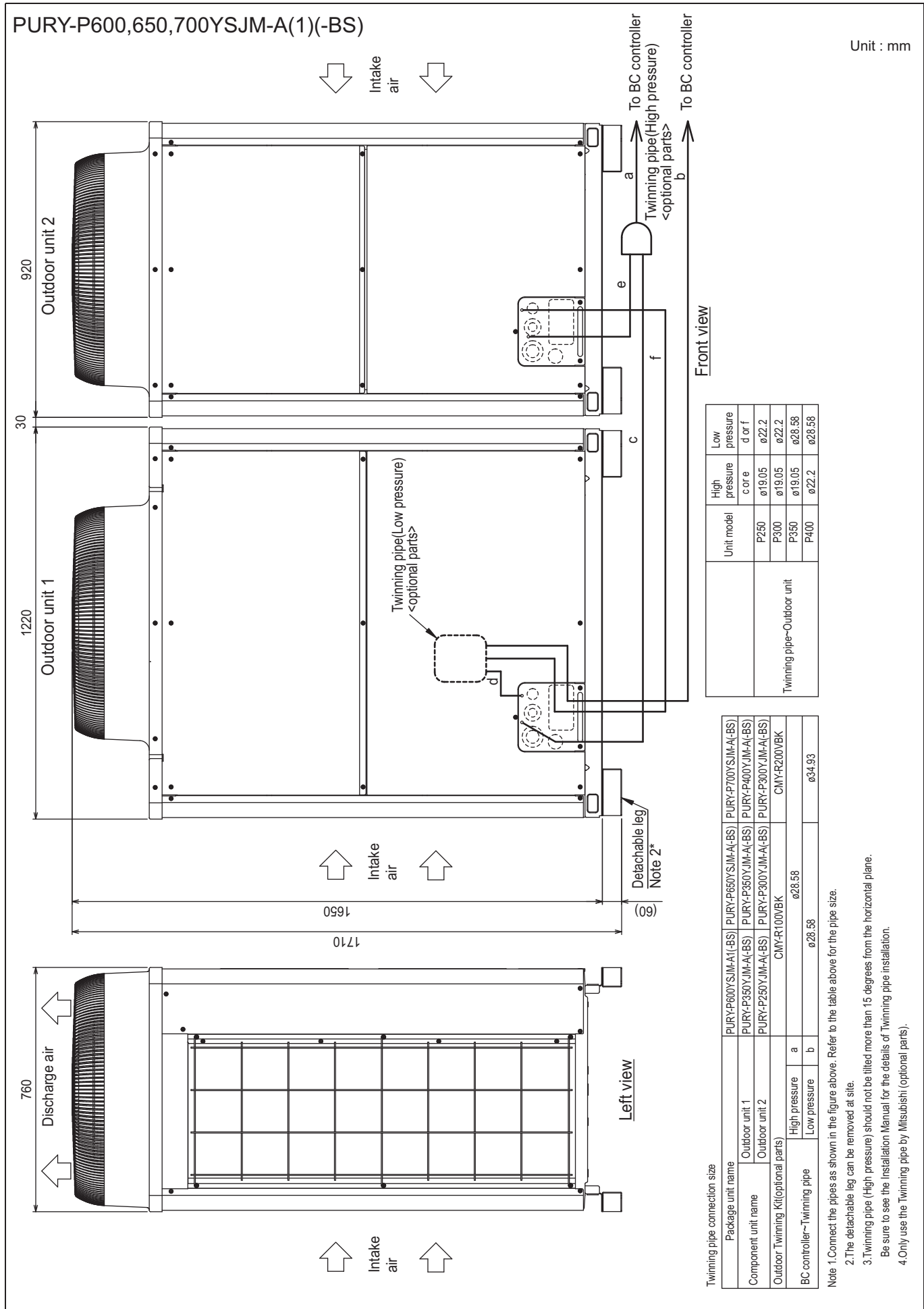


Connecting pipe specifications

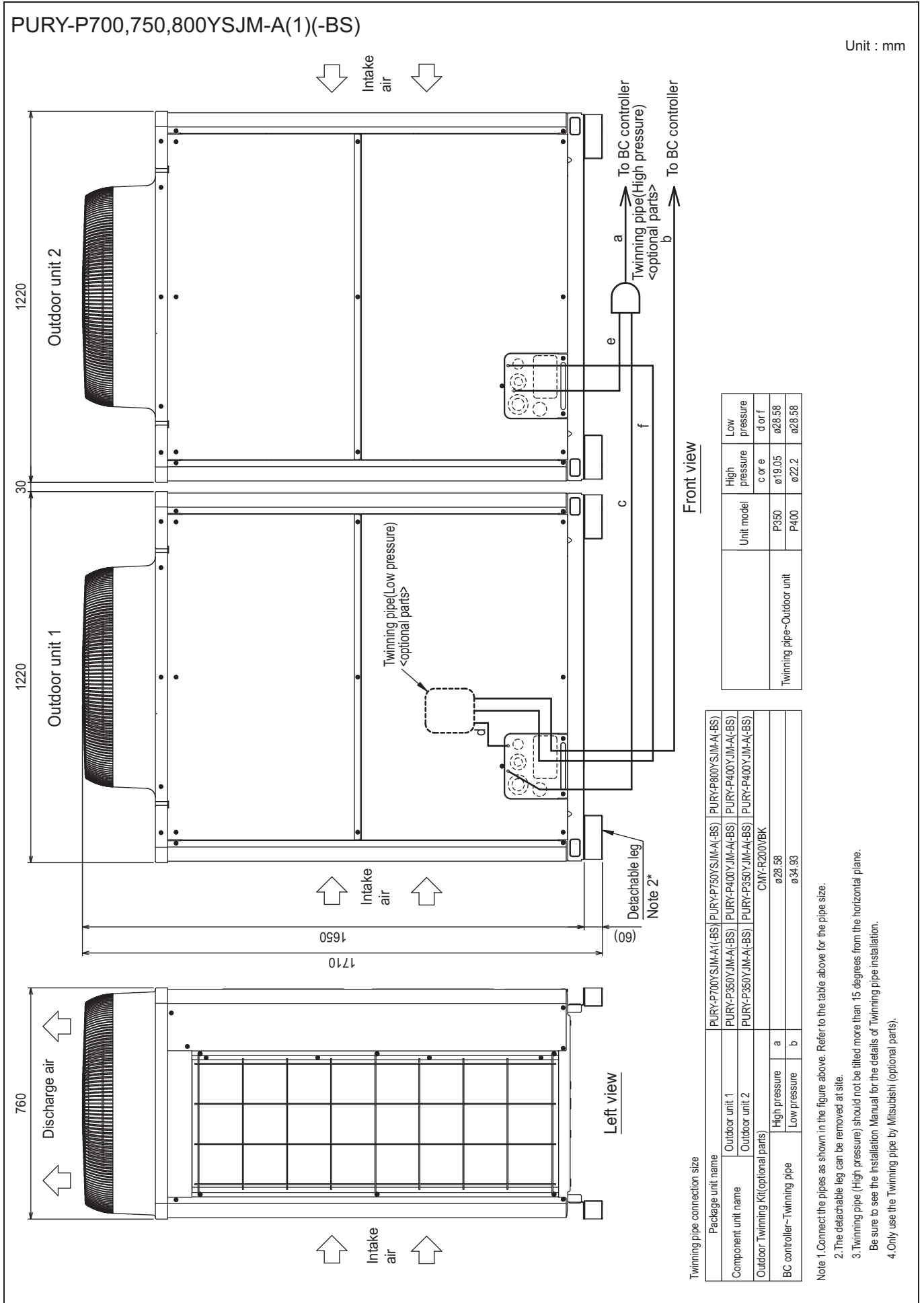
Model	High pressure	Low pressure
PURY-P450YJM	ø22.2 Brazed *1	ø28.58 Brazed *1

*1. Connect by using the connecting pipes (for bottom piping and front piping) that are supplied.

R2

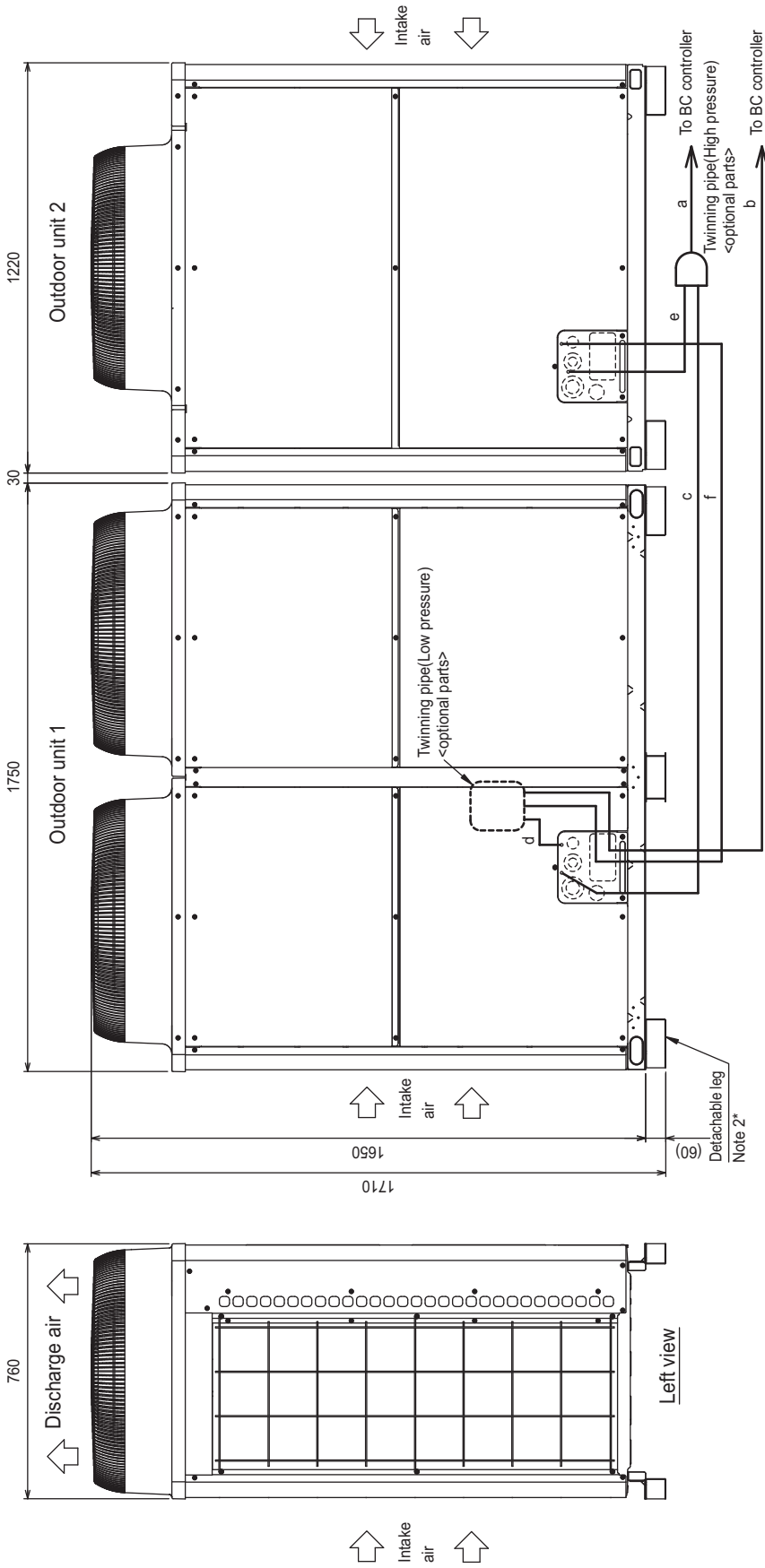


R2



PURY-P800,850YSJM-A(1)(-BS)

Unit : mm



Front view

Twinning pipe-Outdoor unit	Unit model	High pressure	Low pressure
	P350	c or e	d or f
P400	ø22.2	ø28.58	ø28.58
P450	ø22.2	ø22.2	ø28.58

Twinning pipe connection size

Package unit name	PURY-P800YSJM-A1(-BS)	PURY-P850YSJM-A(-BS)
Outdoor unit 1	PURY-P450YJM-A(-BS)	PURY-P450YJM-A(-BS)
Outdoor unit 2	PURY-P350YJM-A(-BS)	PURY-P400YJM-A(-BS)
Outdoor Twinning Kit(optional parts)	CMY-R100XLVBK	CMY-R200XLVBK
BC controller-Twinning pipe	High pressure	a
	Low pressure	b
	ø34.93	ø41.28

- Note 1. Connect the pipes as shown in the figure above. Refer to the table above for the pipe size.
 2. The detachable leg can be removed at site.
 3. Twinning pipe (High pressure) should not be tilted more than 15 degrees from the horizontal plane. Be sure to see the Installation Manual for the details of Twinning pipe installation.
 4. Only use the Twinning pipe by Mitsubishi (optional parts).

R2

