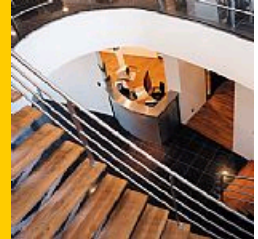




CMB-P104V-G1

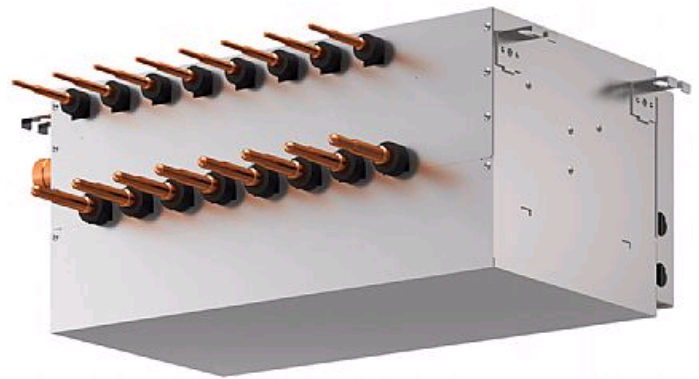
BC Controller

R410A



At the heart of both the R2 and WR2 Series, the BC Controller makes simultaneous heating and cooling possible. It has the inherent 'intelligence' to be the system's decision-maker. The CMB-P104V-G1 unit is for use with PURY-(E)P200-350YJM-A outdoor units & PQRV-P200-300YHM-A condensing units only.

- **New brazed connections**
- **Transfers energy around the system, drawing on energy from the heat source units/outdoor units**
- **Directing energy as requested by the individual indoor units**
- **Instructs the heat source unit/outdoor unit on the amount of refrigerant (liquid or gas) that is required to achieve the requested cooling or heating requirements**
- **Allows unique 2-pipe heat recovery**
- **HIC Circuit for improved efficiency**



Pictures not to scale

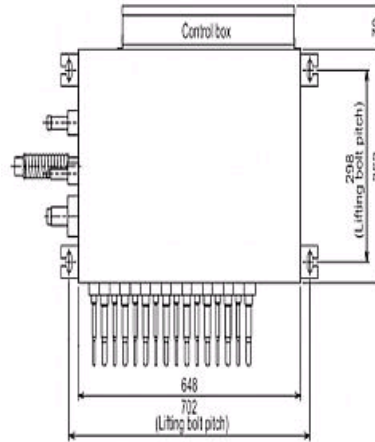
Product Details

CMB-P104V-G1	
Number of Connections	4
Power Input (kW) Heating (Nominal)	0.085
Power Input (kW) Cooling (Nominal)	0.085
Width - mm	648
Depth - mm	432
Height - mm	284
Weight - kg	24
Electrical Supply	220-240v, 50Hz
Phase	Single
Mains Cable No. Cores	3
Running Current (A) - Heating	0.36
Running Current (A) - Cooling	0.36
Fuse Rating (BS88) - HRC (A)	6

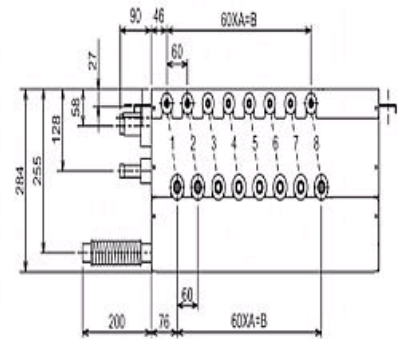
Dimensions

CMB-P104V-G1

Upper View >



Side View >



	A	B
CMB-P104V-G1	3	180
CMB-P105V-G1	4	240
CMB-P106V-G1	5	300



Telephone: 01707 282880

Email: air.conditioning@meuk.mee.com Website: <http://www.mitsubishielectric.co.uk/aircon>

Mitsubishi Electric reserves the right to make any variation in technical specification to the equipment described, or to withdraw or replace products without prior notification or public announcement.

Tel:
Fax:





CMB-P105V-G1

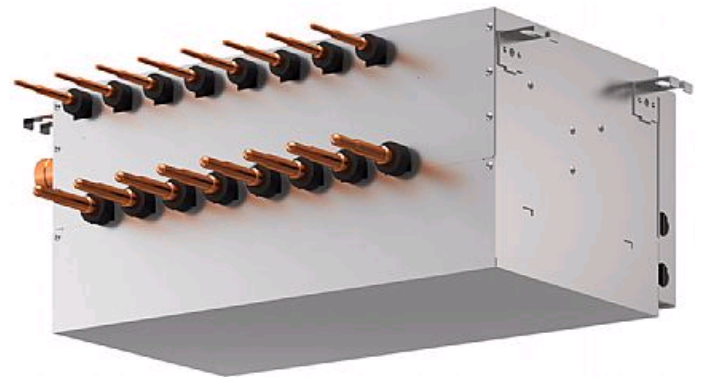
BC Controller

R410A



At the heart of both the R2 and WR2 Series, the BC Controller makes simultaneous heating and cooling possible. It has the inherent 'intelligence' to be the system's decision-maker. The CMB-P105V-G1 unit is for use with PURY-(E)P200-350YJM-A outdoor units & PQRY-P200-300YHM-A condensing units only.

- **New brazed connections**
- **Transfers energy around the system, drawing on energy from the heat source units/outdoor units**
- **Directing energy as requested by the individual indoor units**
- **Instructs the heat source unit/outdoor unit on the amount of refrigerant (liquid or gas) that is required to achieve the requested cooling or heating requirements**
- **Allows unique 2-pipe heat recovery**
- **HIC Circuit for improved efficiency**



Pictures not to scale

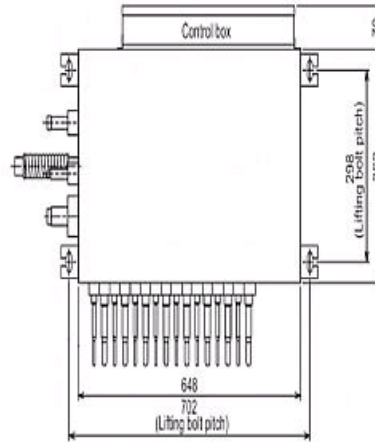
Product Details

CMB-P105V-G1	
Number of Connections	5
Power Input (kW) Heating (Nominal)	0.104
Power Input (kW) Cooling (Nominal)	0.104
Width - mm	648
Depth - mm	432
Height - mm	284
Weight - kg	27
Electrical Supply	220-240v, 50Hz
Phase	Single
Mains Cable No. Cores	3
Running Current (A) - Heating	0.44
Running Current (A) - Cooling	0.44
Fuse Rating (BS88) - HRC (A)	6

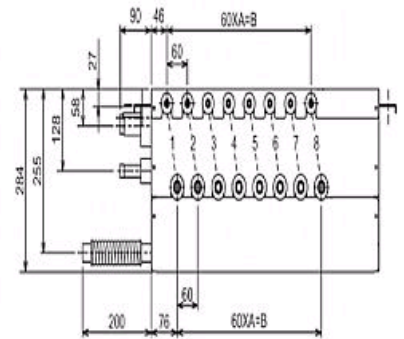
Dimensions

CMB-P105V-G1

Upper View >



Side View >



	A	B
CMB-P104V-G1	3	180
CMB-P105V-G1	4	240
CMB-P106V-G1	5	300



Telephone: 01707 282880

Email: air.conditioning@meuk.mee.com Website: <http://www.mitsubishielectric.co.uk/aircon>

Mitsubishi Electric reserves the right to make any variation in technical specification to the equipment described, or to withdraw or replace products without prior notification or public announcement.

Tel:
Fax:





CMB-P108V-GA1

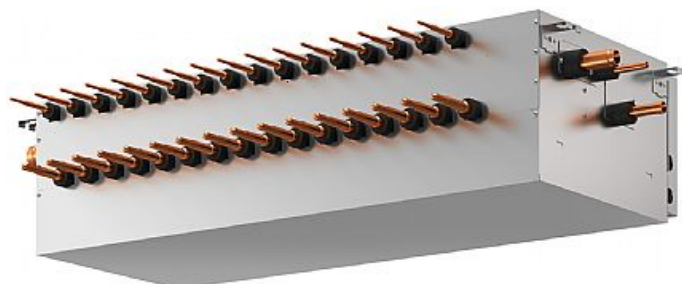
Master BC Controller

R410A



At the heart of both the R2 and WR2 Series, the BC Controller makes simultaneous heating and cooling possible. It has the inherent 'intelligence' to be the system's decision-maker. CMB-P-V-GA1 units are for use with PURY-(E)P200-650Y(S)JM-A outdoor units & PQRY-P200-600Y(S)HM-A condensing units only.

- **New brazed connections**
- **Transfers energy around the system, drawing on energy from the heat source units/outdoor units**
- **Directing energy as requested by the individual indoor units**
- **Instructs the heat source unit/outdoor unit on the amount of refrigerant (liquid or gas) that is required to achieve the requested cooling or heating requirements**
- **Allows unique 2-pipe heat recovery**
- **HIC Circuit for improved efficiency**



Pictures not to scale

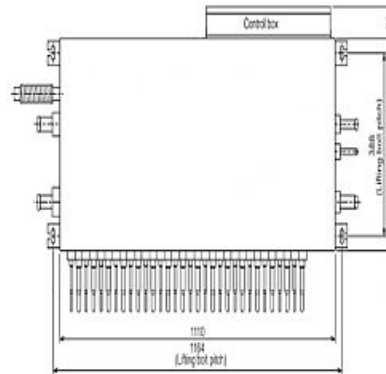
Product Details

CMB-P108V-GA1	
Number of Connections	8
Power Input (kW) Heating (Nominal)	0.161
Power Input (kW) Cooling (Nominal)	0.161
Width - mm	1110
Depth - mm	520
Height - mm	289
Weight - kg	43
Electrical Supply	220-240v, 50Hz
Phase	Single
Mains Cable No. Cores	3
Running Current (A) - Heating	0.68
Running Current (A) - Cooling	0.68
Fuse Rating (BS88) - HRC (A)	6

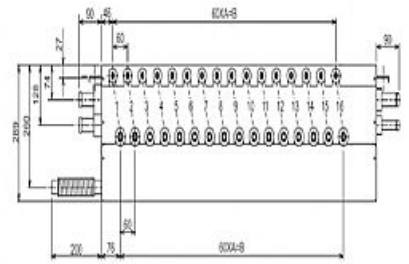
Dimensions

CMB-P108V-GA1

Upper View >



Side View >



	A	B
CMB-P108V-GA1	7	420
CMB-P1010V-GA1	9	540
CMB-P1013V-GA1	12	720
CMB-P1016V-GA1/HA1	15	900



Telephone: 01707 282880

Email: air.conditioning@meuk.mee.com Website: <http://www.mitsubishielectric.co.uk/aircon>

Mitsubishi Electric reserves the right to make any variation in technical specification to the equipment described, or to withdraw or replace products without prior notification or public announcement.

Tel:
Fax:





CMB-P1010V-GA1

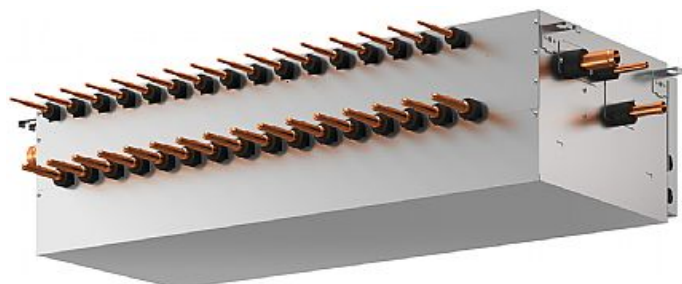
Master BC Controller

R410A



At the heart of both the R2 and WR2 Series, the BC Controller makes simultaneous heating and cooling possible. It has the inherent 'intelligence' to be the system's decision-maker. CMB-P-V-GA1 units are for use with PURY-(E)P200-650Y(S)JM-A outdoor units & PQRY-P200-600Y(S)HM-A condensing units only.

- **New brazed connections**
- **Transfers energy around the system, drawing on energy from the heat source units/outdoor units**
- **Directing energy as requested by the individual indoor units**
- **Instructs the heat source unit/outdoor unit on the amount of refrigerant (liquid or gas) that is required to achieve the requested cooling or heating requirements**
- **Allows unique 2-pipe heat recovery**
- **HIC Circuit for improved efficiency**



Pictures not to scale

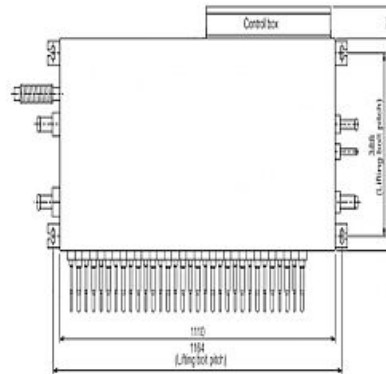
Product Details

CMB-P1010V-GA1	
Number of Connections	10
Power Input (kW) Heating (Nominal)	0.198
Power Input (kW) Cooling (Nominal)	0.198
Width - mm	1110
Depth - mm	520
Height - mm	289
Weight - kg	48
Electrical Supply	220-240v, 50Hz
Phase	Single
Mains Cable No. Cores	3
Running Current (A) - Heating	0.83
Running Current (A) - Cooling	0.83
Fuse Rating (BS88) - HRC (A)	6

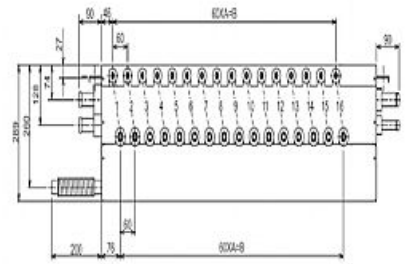
Dimensions

CMB-P1010V-GA1

Upper View >



Side View >



	A	B
CMB-P108V-GA1	7	420
CMB-P1010V-GA1	9	540
CMB-P1013V-GA1	12	720
CMB-P1016V-GA1/HA1	15	900



Telephone: 01707 282880

Email: air.conditioning@meuk.mee.com Website: <http://www.mitsubishielectric.co.uk/aircon>

Mitsubishi Electric reserves the right to make any variation in technical specification to the equipment described, or to withdraw or replace products without prior notification or public announcement.

Tel:
Fax:





CMB-P1013V-GA1

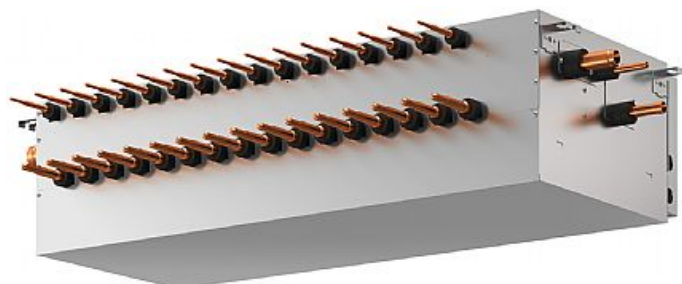
Master BC Controller

R410A



At the heart of both the R2 and WR2 Series, the BC Controller makes simultaneous heating and cooling possible. It has the inherent 'intelligence' to be the system's decision-maker. CMB-P-V-GA1 units are for use with PURY-(E)P200-650Y(S)JM-A outdoor units & PQRY-P200-600Y(S)HM-A condensing units only.

- **New brazed connections**
- **Transfers energy around the system, drawing on energy from the heat source units/outdoor units**
- **Directing energy as requested by the individual indoor units**
- **Instructs the heat source unit/outdoor unit on the amount of refrigerant (liquid or gas) that is required to achieve the requested cooling or heating requirements**
- **Allows unique 2-pipe heat recovery**
- **HIC Circuit for improved efficiency**



Pictures not to scale

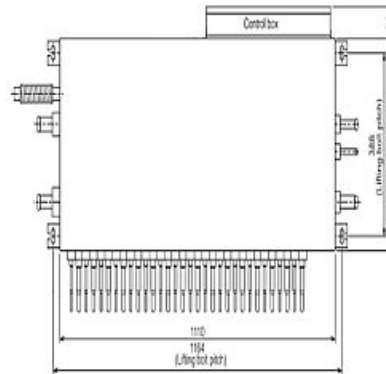
Product Details

CMB-P1013V-GA1	
Number of Connections	13
Power Input (kW) Heating (Nominal)	0.255
Power Input (kW) Cooling (Nominal)	0.255
Width - mm	1110
Depth - mm	520
Height - mm	289
Weight - kg	55
Electrical Supply	220-240v, 50Hz
Phase	Single
Mains Cable No. Cores	3
Running Current (A) - Heating	1.07
Running Current (A) - Cooling	107
Fuse Rating (BS88) - HRC (A)	6

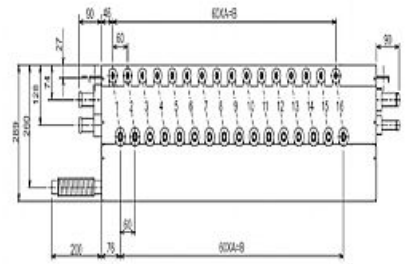
Dimensions

CMB-P1013V-GA1

Upper View >



Side View >



	A	B
CMB-P108V-GA1	7	420
CMB-P1010V-GA1	9	540
CMB-P1013V-GA1	12	720
CMB-P1016V-GA1/HA1	15	900



Telephone: 01707 282880

Email: air.conditioning@meuk.mee.com Website: <http://www.mitsubishielectric.co.uk/aircon>

Mitsubishi Electric reserves the right to make any variation in technical specification to the equipment described, or to withdraw or replace products without prior notification or public announcement.

Tel:
Fax:





CMB-P1016V-GA1

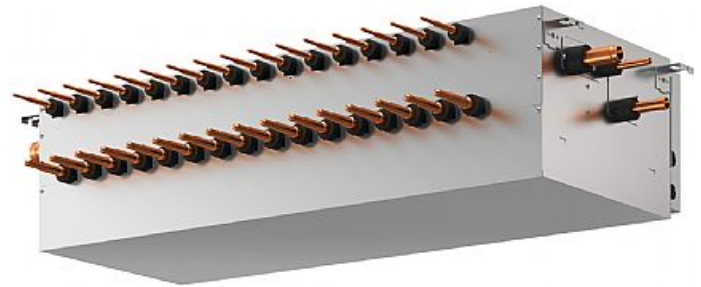
Master BC Controller

R410A



At the heart of both the R2 and WR2 Series, the BC Controller makes simultaneous heating and cooling possible. It has the inherent 'intelligence' to be the system's decision-maker. CMB-P-V-GA1 units are for use with PURY-(E)P200-650Y(S)JM-A outdoor units & PQRY-P200-600Y(S)HM-A condensing units only.

- **New brazed connections**
- **Transfers energy around the system, drawing on energy from the heat source units/outdoor units**
- **Directing energy as requested by the individual indoor units**
- **Instructs the heat source unit/outdoor unit on the amount of refrigerant (liquid or gas) that is required to achieve the requested cooling or heating requirements**
- **Allows unique 2-pipe heat recovery**
- **HIC Circuit for improved efficiency**



Pictures not to scale

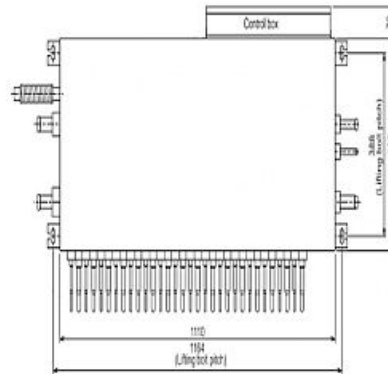
Product Details

CMB-P1016V-GA1	
Number of Connections	16
Power Input (kW) Heating (Nominal)	0.312
Power Input (kW) Cooling (Nominal)	0.312
Width - mm	1110
Depth - mm	520
Height - mm	289
Weight - kg	62
Electrical Supply	220-240v, 50Hz
Phase	Single
Mains Cable No. Cores	3
Running Current (A) - Heating	1.3
Running Current (A) - Cooling	1.3
Fuse Rating (BS88) - HRC (A)	6

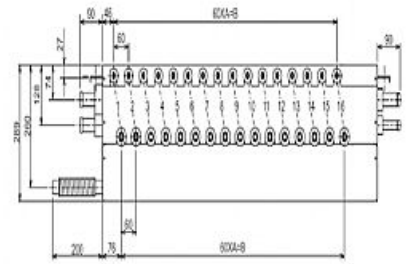
Dimensions

CMB-P1016V-GA1

Upper View >



Side View >



	A	B
CMB-P108V-GA1	7	420
CMB-P1010V-GA1	9	540
CMB-P1013V-GA1	12	720
CMB-P1016V-GA1/HA1	15	900



Telephone: 01707 282880

Email: air.conditioning@meuk.mee.com Website: <http://www.mitsubishielectric.co.uk/aircon>

Mitsubishi Electric reserves the right to make any variation in technical specification to the equipment described, or to withdraw or replace products without prior notification or public announcement.

Tel:
Fax:





CMB-P1016V-HA1

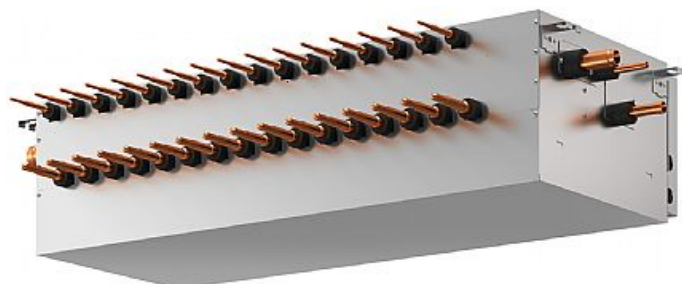
Master BC Controller

R410A



At the heart of both the R2 and WR2 Series, the BC Controller makes simultaneous heating and cooling possible. It has the inherent 'intelligence' to be the system's decision-maker. The CMB-P1016V-HA1 unit is for use with PURY-(E)P700-900YSJM-A only.

- **New brazed connections**
- **Transfers energy around the system, drawing on energy from the heat source units/outdoor units**
- **Directing energy as requested by the individual indoor units**
- **Instructs the heat source unit/outdoor unit on the amount of refrigerant (liquid or gas) that is required to achieve the requested cooling or heating requirements**
- **Allows unique 2-pipe heat recovery**
- **HIC Circuit for improved efficiency**



Pictures not to scale

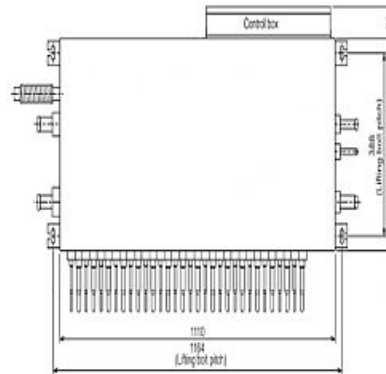
Product Details

CMB-P1016V-HA1	
Number of Connections	16
Power Input (kW) Heating (Nominal)	0.312
Power Input (kW) Cooling (Nominal)	0.312
Width - mm	1110
Depth - mm	520
Height - mm	289
Weight - kg	69
Electrical Supply	220-240v, 50Hz
Phase	Single
Mains Cable No. Cores	3
Running Current (A) - Heating	1.3
Running Current (A) - Cooling	1.3
Fuse Rating (BS88) - HRC (A)	6

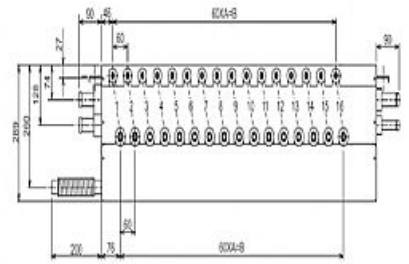
Dimensions

CMB-P1016V-HA1

Upper View >



Side View >



	A	B
CMB-P108V-GA1	7	420
CMB-P1010V-GA1	9	540
CMB-P1013V-GA1	12	720
CMB-P1016V-GA1/HA1	15	900



Telephone: 01707 282880

Email: air.conditioning@meuk.mee.com Website: <http://www.mitsubishielectric.co.uk/aircon>

Mitsubishi Electric reserves the right to make any variation in technical specification to the equipment described, or to withdraw or replace products without prior notification or public announcement.

Tel:
Fax:

