

System Free In the Ceiling



Slim Width (RPIM)

Low Height (RPI)

Features and Benefits

These cost effective, In the Ceiling ducted units are available with heating and cooling capacities from 5.0kW to 16.0kW and offer the following benefits:

- **Slim but Sturdy Design**

The RPI has a reinforced structure to give the unit more rigidity when it is suspended. It also only requires a small amount of space due to the reduction in overall dimensions and has one of the lowest heights in the market

- **Low Noise**

Noise levels as low as 27dB(A)

- **Adjustable Static Pressure**

The unit has three static pressure settings and can be adapted to suit the installation requirements. The high static pressure setting can be used for longer duct installations and the low static pressure setting for those installations with short duct lengths.

Static pressure can be altered from the remote controller

- **Built-In Drain Pump**

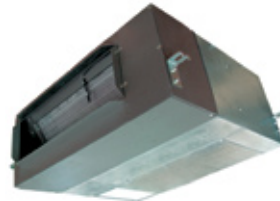
The units are equipped with an automatic internal drain pump, which removes the accumulated condensation from the drain pan. An electronic sensor monitors the water level activating the pump only when necessary

- **Intake Filter as Standard**

RPI unit is equipped with an intake filter as standard. The standard filter is removable for cleaning even if return air ductwork is connected to the unit

- **Air Intake Direction**

Air intake direction can be horizontal or vertical by interchanging the bottom panel with the fan cover



RPIM-FSN2E Slim Width



RPI-FSN2E Low Height



PC-ART

- **Standard Controller**

Hard wired remote controller with built in 7-day timer

- **Control Options**

Optional simplified hard wired or infra red remote controller with 24hr timer

Compatible with H-LINK II Control and CS Net Web controls that integrate with all leading BMS protocols

- **Compatible with Hitachi's full range of commercial outdoor units:**

Utopia ES, Utopia Centrifugal, IVX, IVX*, and all Set Free VRF systems

System Features	RPI 0.8FSN2E	RPI 1.0FSN2E	RPI 1.5FSN2E	RPIM 0.8FSN2E	RPIM 1.0FSN2E	RPIM 1.5FSN2E
Remote Controller Self Diagnosis	✓	✓	✓	✓	✓	✓
Static Pressure Selection (From Remote Controller)	✓	✓	✓	✓	✓	✓
Inlet Air Direction Change (Rear/Bottom)	✓	✓	✓	✓	✓	✓
Filter Servicing	✓	✓	✓	✓	✓	✓
Drain Pump (850mm lift)	✓	✓	✓	Option	Option	Option
H-LINK Compatible	✓	✓	✓	✓	✓	✓



Indoor Units

In the Ceiling		LOW HEIGHT						SLIM WIDTH					
		RPI 0.8FSN2E		RPI 1.0FSN2E		RPI 1.5FSN2E		RPIM 0.8FSN2E		RPIM 1.0FSN2E		RPIM 1.5FSN2E	
		0.8	1.0	> 1.3	1.3 <	1.5	> 1.8	0.8	1.0	1.3 <	1.5		
Nominal Capacity (kW)	Cooling	2.2	2.8	3.1	3.8	4.5	5.0	2.2	2.8	3.8	2.8		
	Heating	2.5	3.2	3.8	4.3	5.0	5.5	2.5	3.2	4.3	3.2		
UK Cooling Capacity (kW)	Total	2.1	2.6	3.0	3.4	3.9	4.6	2.1	2.6	3.4	2.6		
	Sensible	1.7	2.1	2.4	2.4	2.8	3.4	1.7	2.1	2.4	2.1		
Indoor Sound Pressure Level dB(A)	SP-00	33/33/30		33/33/30		34/34/31		31/27		31/27		33/29	
Indoor Fan (m³/min)	SP-00	8/8/7		8/8/7		10/10/9		8/8/7		8/8/7		10/10/8.5	
Static Pressure (Pa) (Hi-01/Hi-00/Hi02)	SP-01/00/02	45/25/25/		45/25/25		40/25/25		45/10		45/10		45/10	
Refrigerant Piping (mm (in))	Liquid	6.35(1/4)**		6.35(1/4)**		6.35(1/4)**		6.35(1/4)**		6.35(1/4)**		6.35(1/4)**	
	Gas	12.7(1/2)		12.7(1/2)		12.7(1/2)		12.7(1/2)		12.7(1/2)		12.7(1/2)	
Dimensions (mm) & Weight (kg)	Height	600						600					
	Width	1084						702					
	Depth	197						275					
	Weight	29.5						25		25		26	

Outdoor Units

Compatible with Hitachi's full range of commercial outdoor units: Utopia ES, Utopia Centrifugal, IVX, IVX+ and all Set Free VRF systems